

# Silverlake - Longwall Cottage

**Region:** The South West **Sleeps:** 6

---

## Overview

Discover the tranquility of Longwall Cottage, a stunning lakeside retreat nestled within the picturesque Silverlake Resort (<https://www.oliverstravels.com/silverlake-resort-dorset/>) in Dorset. With three comfortable bedrooms, this luxurious holiday house easily accommodates up to six guests, offering a memorable stay for families and groups alike.

Step inside to find a contemporary retreat adorned with modern amenities and elegant furnishings. The open-plan living areas provide views of the surrounding landscape, while plush sofas and a fireplace invite you to unwind in style. Large windows and sliding doors effortlessly capture the stunning surroundings, maintaining a strong connection with nature.

Whether you're lounging by the fireplace or preparing a meal in the fully-equipped kitchen or on the outdoor BBQ, every moment is infused with comfort and sophistication. Outside, the lakeside private terrace or tranquil first floor balcony beckon, while direct access to the lake and resort activities ensures endless opportunities for recreation and relaxation.

Indulge in the ultimate lakeside getaway at Longwall Cottage, where every detail is designed to elevate your experience. From leisurely strolls through the reserve to exhilarating water sports, there's something for everyone to enjoy. Book your stay today and immerse yourself in the serene beauty of Dorset's enchanting landscape.

## Facilities

Onsite Restaurants • Horse Riding • Walking/Hiking Paths • Walk to Village  
• Romantic • Watersports • Ideal for Kids • Canoeing/Kayaking • Tennis  
Nearby • Cycling • Ideal for Xmas/NY • Fishing • Golf Nearby • Tennis



Court • Villa • Ideal for Teens • Heated Pool • Special Offer • Cots (Cribs)  
• Has Discount • Modern • Shared Pool • <1hr to Airport • Parking Space  
• Walk to Restaurant • Wi-Fi/Internet • Waterfront • Rural Location • Easy  
By Train • Outstanding Landscapes • Outdoor Pursuit & Activities • Tourist  
Towns & Villages • Spa/Massage • TV • Gym/Fitness Room • Dishwasher  
• Microwave • Sauna/Steam • Working Fireplace/Woodburner • Heating •  
Kid-friendly museum • Kid-friendly excursions • Water excursions/Boat  
trips • Playground nearby • Playground • Ideal for Babies & Toddlers •  
High Chair(s)

# Interior & Grounds

## Longwall Cottage

### Ground Floor

- Open plan living kitchen dining area with wood burning stove
- WC

### First Floor

- Master bedroom with en-suite shower and access to balcony
- Double bedroom
- Twin bedroom
- Family bathroom

### Exterior

- Private decking with BBQ and outdoor dining furniture
- Private jetty
- First floor balcony
- Parking
- Garden area

### Additional Facilities

- Wi-Fi
- Satellite TV
- Travel cot & highchair available on request
- Use of Estate spa and outdoor swimming pool
- Use of Estate tennis courts
- Bike hire
- Watersport equipment hire between March and October (paddleboards, canoes)
- Childrens playground on the estate



# Location & Local Information

Longwall Cottage invites you to experience the serene charm of Silverlake Resort, nestled amidst Dorset's picturesque landscapes. Embrace tranquillity and outdoor adventure as you explore waterways, cycle paths, and the rolling countryside. Whether paddling in a kayak, canoe or paddleboard, or cycling through the scenic bike trails, adventure awaits at every turn. Enjoy a friendly game on the resort's tennis court or 3G artificial-turf Multi Use Games Area (MUGA) in Beaumont Village, all while admiring the breathtaking views of the lakes. Unwind with a leisurely stroll along the sandy shores of the dramatic UNESCO-heritage Jurassic coastline, such as Ringstead Bay, or try your hand at fishing in our well-stocked lakes.

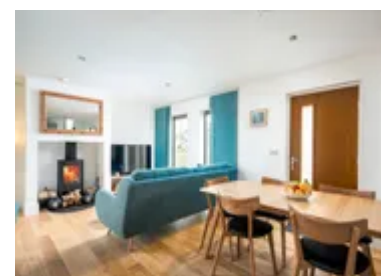
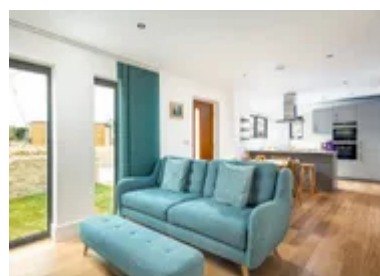
Discover nearby historic landmarks and charming villages, immersing yourself in Dorset's rich heritage. Wander through the breezy coastal town of Poole where you can hop on a ferry to neighbouring islands, uncover the rich history of Dorchester, visit the thousand-year-old Corfe Castle, or soak up the picture postcard vistas of Lyme Regis!

After a day of exploration, the Resort Spa is the perfect respite, where an outdoor pool, roof terrace, sauna, gym, library and a 'restful relaxation' lounge await.

Whether seeking relaxation or excitement, Silverlake Resort offers an unforgettable experience for every guest.

## Local Amenities

Nearest Airport	<b>Bournemouth Airport (45.5 km)</b>
Nearest Bar/Pub	<b>On Site (In walking distance)</b>
Nearest Beach	<b>National Trust - Ringstead Bay (10 km)</b>
Nearest Golf	<b>Came Down Golf Club (12.5 km)</b>
Nearest Restaurant	<b>The Wise Man Inn (4.5 km)</b>
Nearest Shop	<b>Co-Op, Crossways (2.5 km)</b>
Nearest Supermarket	<b>Waitrose &amp; Partners, Dorchester (9 km)</b>
Nearest Town/City	<b>Dorchester (9 km)</b>



Nearest Train Station	<b>Moreton Train Station</b> (5.5 km)
Nearest Village	<b>Crossways</b> (2.5 km)
Sightseeing	<b>Durdle Door</b> (16 km)

## What we love

- Life on the water's edge is made easy with your own private outdoor decking, whilst the private balcony provides another great vantage point to enjoy the lakeside views
- A cosy wood burning stove makes this property perfect for chillier months
- Silverlake Resort (<https://www.oliverstravels.com/silverlake-resort-dorset/>) offers a variety of activities to keep kids and adults alike entertained
- A stone's throw from the glorious beaches of the Jurassic Coast

## What you should know...

- Although safe, the development is centred round a lake so guests with small children should be mindful and ensure constant supervision
- There are no water-based activities from November to February due to low temperatures
- Access to bikes, canoes, kayaks, and stand-up paddle boards are available, but are subject to additional costs.
- A travel cot and high chair are available to hire, but come at an additional cost of £10. Please bring your own linen and mattress for the travel cot.

# Terms & Conditions

- **Security deposit:** £500 charged to client's credit card and held as a pre-authorisation prior to arrival and refunded a week after departure, subject to full inspection. This is handled by the local team.
- **Arrival time:** 16:00 - 00:00
- **Departure time:** 10:00
- **Energy costs included?:** Yes, included in the rental price.
- **Linen & towels included?:** Yes, included in the rental price.
- **Pets welcome?:** Not allowed.
- **Other Ts and Cs:** Travel cot and highchair available for £10, subject to availability. Please advise at the time of booking. Guest to provide their own linen and mattress for a travel cot.
- **Changeover day:** Bookings are available for the following durations only: 7 nights starting on a Monday or Friday, 2 or 3 nights starting on a Friday, or 4 nights starting on a Monday.
- **End of stay cleaning:** Standard changeover clean included in the price. Guests are required to leave the accommodation clean, tidy and in the same condition as on their arrival. Any extra cleaning, laundry, maintenance and/or rubbish disposal required will be charged against the security deposit.
- **Smoking Allowed?:** Smoking & Vaping are not permitted.
- **Minimum stay:** 2 nights.
- **Heating costs included?:** Yes, included in the rental price.
- **Internet access?:** Wi-Fi internet access included.