

# Silverlake - Wildside

Region: The South West Sleeps: 8

## Overview

Perched near the water's within Silverlake Resort (<https://www.oliverstravels.com/silverlake-resort-dorset/>) edge this welcoming wood clad home is an elegant escape for up to eight people, perfect for a family holiday or a group getaway. Enjoy an al fresco meal from the BBQ on your private decking and take in the fresh coastal breeze of the Dorset heathlands.

Step inside to find a contemporary retreat adorned with modern amenities and elegant furnishings. The open plan living area is a light and airy space with patio doors that lead to the decking and lawned area, and a wood burning stove for chillier evenings. The well-equipped kitchen has everything you will need for entertaining and preparing meals throughout your stay. Upstairs, three double bedrooms and a bunk bed room await, promising a restful night's sleep. Outside, the private terrace or tranquil first floor balcony beckon, while access to the Silverlake Resort's Activity Hub ensures endless opportunities for recreation, adventure and relaxation.

Indulge in the ultimate lakeside getaway at Wildside, where every detail is designed to elevate your experience. From leisurely strolls through the reserve to exhilarating water sports, there's something for everyone to enjoy. Book your stay today and immerse yourself in the serene beauty of Dorset's enchanting landscape.

## Facilities

Onsite Restaurants • Canoeing/Kayaking • Tennis Nearby • Walking/Hiking Paths • Walk to Village • Cycling • Ideal for Kids • Ideal for Xmas/NY • Villa • Tennis Court • Golf Nearby • Ideal for Teens • Special Offer • Has Offer • Has Discount • Cots (Cribs) • Heated Pool • Modern • Shared Pool • <1hr to Airport • Walk to Restaurant • Parking Space • Wi-Fi/Internet • Easy By Train • Outstanding Landscapes • Outdoor Pursuit & Activities • Tourist Towns & Villages • Spa/Massage • Gym/Fitness Room •



Dishwasher • Microwave • Satellite TV • Sauna/Steam • Working  
Fireplace/Woodburner • Heating • Kid-friendly museum • Kid-friendly  
excursions • Water excursions/Boat trips • Playground nearby • Ideal for  
Babies & Toddlers • High Chair(s)

# Interior & Grounds

## Wildside

### Ground Floor

- Open plan kitchen, dining and living area with access to outdoor decking
- WC

### First Floor

- Double bedroom with en-suite shower and private balcony
- Double bedroom with en-suite shower
- Double bedroom
- Bunk room
- Family bathroom

### Exterior

- Private decking with outdoor furniture and BBQ
- First floor balcony with outdoor seating
- Parking
- Lawned area

### Additional Facilities

- WiFi
- Flat screen TV
- Coffee machine
- Activity Hub Included
- Use of Resort spa and outdoor swimming pool
- Use of Estate tennis courts
- Bike hire
- Watersport equipment hire between March and October (paddleboards, canoes)
- Childrens playground on the estate
- Travel cot & highchair available on request
- Allocated parking space



# Location & Local Information

Wildside invites you to experience the serene charm of Silverlake Resort, nestled amidst Dorset's picturesque landscapes. Embrace tranquillity and outdoor adventure as you explore waterways, cycle paths, and the rolling countryside. Whether paddling in a kayak, canoe or paddleboard, or cycling through the scenic bike trails, adventure awaits at every turn. Enjoy a friendly game on the resort's tennis court or 3G artificial-turf Multi Use Games Area (MUGA) in Beaumont Village, all while admiring the breathtaking views of the lakes. Unwind with a leisurely stroll along the sandy shores of the dramatic UNESCO-heritage Jurassic coastline, such as Ringsted Bay, or try your hand at fishing in our well-stocked lakes.

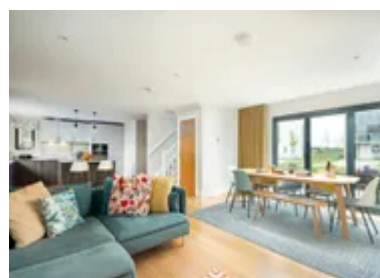
Discover nearby historic landmarks and charming villages, immersing yourself in Dorset's rich heritage. Wander through the breezy coastal town of Poole where you can hop on a ferry to neighbouring islands, uncover the rich history of Dorchester, visit the thousand-year-old Corfe Castle, or soak up the picture postcard vistas of Lyme Regis!

After a day of exploration, the Resort Spa is the perfect respite, where an outdoor pool, roof terrace, sauna, gym, library and a 'restful relaxation' lounge await.

Whether seeking relaxation or excitement, Silverlake Resort offers an unforgettable experience for every guest.

## Local Amenities

Nearest Airport	<b>Bournemouth Airport (45.5 km)</b>
Nearest Bar/Pub	<b>On Site (In walking distance)</b>
Nearest Beach	<b>National Trust - Ringstead Bay (10 km)</b>
Nearest Golf	<b>Came Down Golf Club (12.5 km)</b>
Nearest Restaurant	<b>The Wise Man Inn (4.5 km)</b>
Nearest Shop	<b>Co-Op, Crossways (2.5 km)</b>
Nearest Supermarket	<b>Waitrose &amp; Partners, Dorchester (9 km)</b>
Nearest Town/City	<b>Dorchester (9 km)</b>



Nearest Train Station	<b>Moreton Train Station</b> (5.5 km)
Nearest Village	<b>Crossways</b> (2.5 km)
Sightseeing	<b>Durdle Door</b> (16 km)

## What we love

- The light and airy living area benefits from patio doors that lead through to private decking, a great spot to enjoy a glass of wine or evening meal
- A cosy wood burning stove makes this property perfect for chillier months
- With hundreds of acres of outstanding natural habitats, the outdoor explorations are endless at Silverlake Resort (<https://www.oliverstravels.com/silverlake-resort-dorset/>)!
- The Resort Spa offers offer a tranquil sanctuary of stress-free indulgence and ultimate relaxation!
- A stone's throw from the glorious beaches of the Jurassic Coast

## What you should know...

- Please be aware there are no water-based activities between November and February for health and safety reasons.
- Access to bikes, canoes, kayaks, and stand-up paddle boards are available, but are subject to additional costs.
- A travel cot and high chair are available to hire, but come at an additional cost of £10. Please bring your own linen and mattress for the travel cot.
- Although safe, the development is centred round a lake so guests with small children should not be left to explore on their own.

# Terms & Conditions

- **Security deposit:** £500 charged to client's credit card and held as a pre-authorisation prior to arrival and refunded a week after departure, subject to full inspection. This is handled by the local team.
- **Arrival time:** 16:00 - 00:00
- **Departure time:** 10:00
- **Energy costs included?:** Yes, included in the rental price.
- **Linen & towels included?:** Yes, included in the rental price.
- **Pets welcome?:** Not allowed.
- **Other Ts and Cs:** Travel cot and highchair available for £10, subject to availability. Please advise at the time of booking. Guest to provide their own linen and mattress for a travel cot.
- **Changeover day:** Bookings are available for the following durations only: 7 nights starting on a Monday or Friday, 2 or 3 nights starting on a Friday, or 4 nights starting on a Monday.
- **End of stay cleaning:** Standard changeover clean included in the price. Guests are required to leave the accommodation clean, tidy and in the same condition as on their arrival. Any extra cleaning, laundry, maintenance and/or rubbish disposal required will be charged against the security deposit.
- **Smoking Allowed?:** Smoking & Vaping are not permitted.
- **Minimum stay:** 2 nights.
- **Heating costs included?:** Yes, included in the rental price.
- **Internet access?:** Wi-Fi internet access included.