

Chalet Rama

Region: 3 Valleys Sleeps: 12

Overview

Start your next holiday in style at Chalet Rama, a luxurious modern retreat nestled in the heart of Courchevel 1850. This stunning chalet boasts breath-taking views of the surrounding mountains, making it the perfect escape for those seeking privacy, comfort, and unparalleled beauty.

Featuring six spacious and exquisitely decorated bedrooms, you'll find that each one has been designed to provide maximum comfort and relaxation, with plush bedding, fluffy pillows, beautiful views of the surrounding scenery, and a private en-suite bathroom. The master bedroom is particularly stunning, with a private balcony and a large soaking tub and walk-in shower in its bathroom.

For rest and relaxation, the grand open-plan living areas of Chalet Rama are also a sight to behold, with large floor-to-ceiling windows that provide a stunning view of the snow-capped mountains. The spacious living room features a cosy fireplace, perfect for relaxing around after a long day on the slopes while your dining room boasts a large dining table that seats up to twelve people. There is also a cinema room for movie nights with family and friends.

Chalet Rama features a sleek, modern kitchen with all the modern appliances you need to create delicious group meals during your stay. Not everything is down to you, however, as each morning a private chef will visit Chalet Rama to help you start the day right with a delicious in-home breakfast service.

The chalet also boasts an impressive spa area, complete with an indoor swimming pool, sauna, and steam room. And, if your muscles are feeling extra tired after a day on the slopes, can also indulge in a massage or other spa treatments in the dedicated massage room. For those who



want to stay active during their stay, Chalet Rama has a fully equipped gym on-site with a range of equipment to suit all levels of fitness.

Outside, guests can enjoy the fresh mountain air from the comfort of the chalet's expansive terrace, which features an outdoor hot tub and a fireplace. The chalet also has a heated garage with space for up to five cars, making it a perfect base for exploring the surrounding area.

Alongside your chef, Chalet Rama is supported by a dedicated team of staff, including a housekeeper and concierge who will ensure that you and your fellow guests have everything they need during their stay.

Facilities

Skiing • Wi-Fi/Internet • Ski Lift Nearby • Walk To Slopes • Lakes and Mountains • Coffee Machine • Wellness • Self-Catered • Spa/Massage • Ideal for Xmas/NY • Ski Chalet • Hairdryer • Ski-In/Ski-Out • Walking/Hiking Paths • Maid Service Included • Lift • Walk to Village • Quirky (Unique) • Gym/Fitness Room • Instagrammable • Modern • Breakfast Included • Indoor Pool • Ideal for Kids • Ideal for Teens • Hot Tub • Walk to Restaurant • Dishwasher • Safety Deposit Box • Smart TV • Sauna/Steam • Home Cinema • Working Fireplace/Woodburner • Heating • Parking Space • Outstanding Landscapes • Outdoor Pursuit & Activities • Tourist Towns & Villages

Interior & Grounds

The Chalet

Below Ground Floor

- Home cinema room
- Bar
- Laundry room

Ground Floor

- Indoor swimming pool
- Indoor jacuzzi
- Hammam
- Fitness room
- Massage room
- Bedroom with a double bed
- Bathroom with a shower
- Ski room
- WC

First Floor

- Master bedroom with a double bed and en-suite bathroom with bathtub and shower
- Bedroom with a double bed and en-suite bathroom with bathtub
- Two bedrooms with a double bed (separable on request) and en-suite bathroom with shower
- WC

Second Floor

- Living area with a kitchen, and a terrace

Third floor

- Bedroom with a double bed and en-suite bathroom with bathtub

Additional Facilities

- Wi-Fi
- Hairdryers
- Coffee machine
- Dishwasher
- Freezer/fridge
- Oven



- Apple TV
- DVD player / Blu-ray
- Mac computer
- Printer
- Boots heater
- Elevator
- Parking space
- Safe
- Chef providing breakfast

Location & Local Information

Chalet Rama is located in the exclusive resort of Courchevel 1850, which is situated in the heart of the French Alps' Three Valleys ski zone. Renowned for its world-class skiing and snowboarding, as well as its luxurious boutiques, restaurants, and bars, Courchevel 1850 is a fantastic choice for your next winter break.

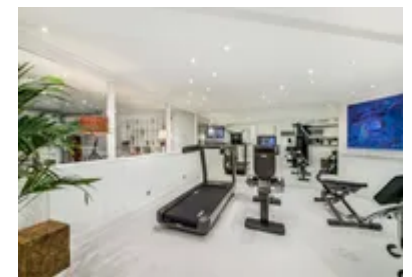
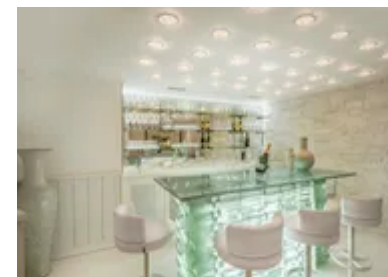
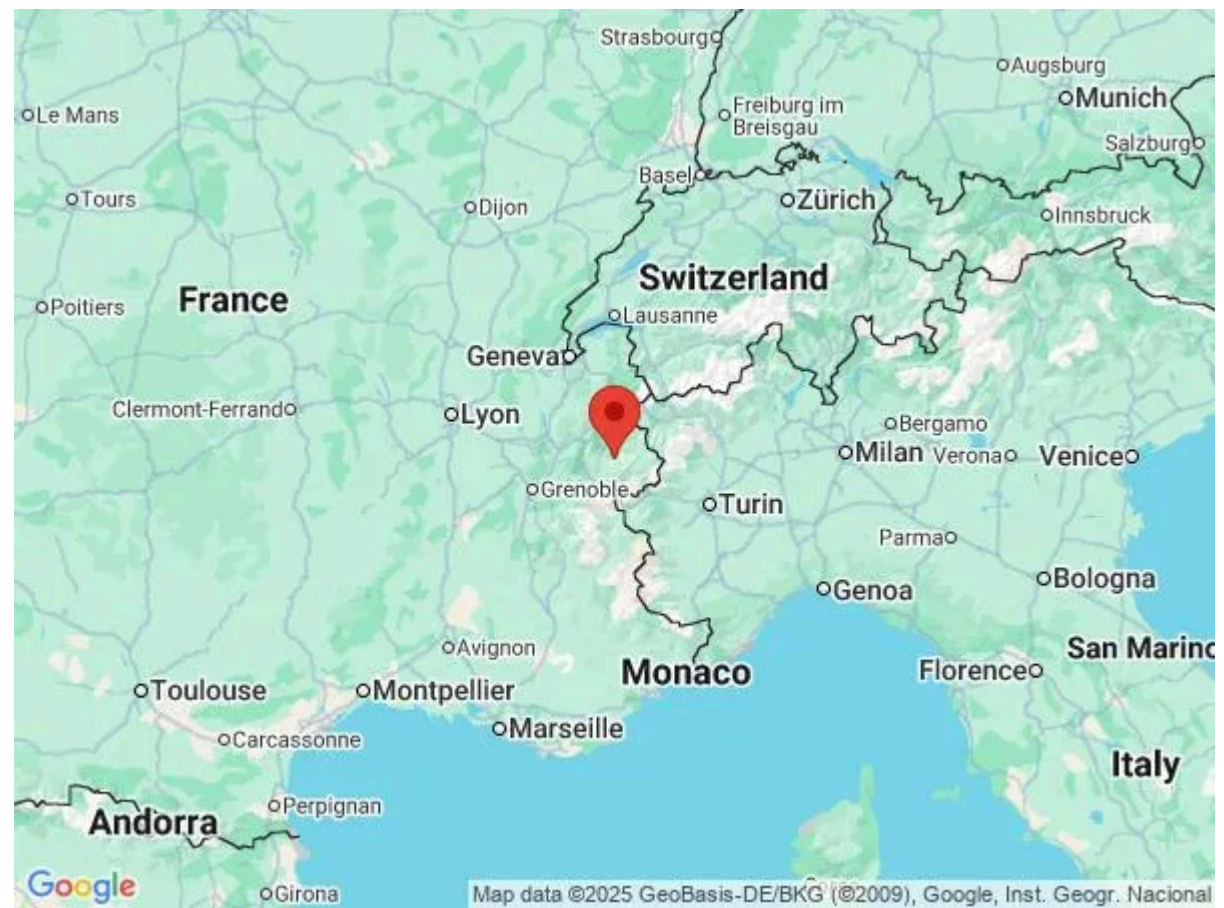
The closest major airports to Chalet Rama are Geneva in Switzerland and Lyon in France. Both airports offer private and shared transfer options. A private transfer takes around two-and-a-half hours from each, while a shared transfer will take longer depending on the number of drop-offs ahead of you. If you would prefer to drive yourself, Courchevel is easy to get to. Alternatively, the nearest train station to Courchevel is in Moutier, where you can easily secure a taxi or shared shuttle to the resort.

Once in Courchevel 1850, you're well served by Chalet Rama's location as you'll be able to access the slopes directly in just a few minutes. The chalet is also located close to the resort's many restaurants, bars, and shops, making it easy for guests to enjoy all that Courchevel 1850 has to offer.

In the resort centre, you'll find a picturesque town with a reputation for luxury and refinement. In addition to its exceptional skiing and snowboarding, the resort offers a wide range of activities for visitors to enjoy. Ranging from a wide variety of winter sports activities to world-class spa and wellness facilities, Courchevel has plenty to explore during your time there.

Courchevel is also known for its excellent dining options, with a range of Michelin-starred restaurants, including Le 1947 and Le Chabichou, as well as more casual eateries and cafes and a wonderful selection of bars and nightclubs for those who want to enjoy the resort's vibrant nightlife scene.

Local Amenities



Nearest Airport	Geneva Aiport (187 km)
Nearest Restaurant	Le Chalet de Pierres (450 m)
Nearest Bar/Pub	Bar Restaurant L'Equipe (350 m)
Nearest Supermarket	Carrefour Montagne (350 m)
Nearest Piste	Cospillot (150 m)
Nearest Ski Hire	Ski Set Six Senses (350 m)
Nearest Ski Lift	Cospillot (150 m)
Nearest Town/City	Courchevel 1850 (850 m)

What we love

- Chalet Rama was the perfect ski-in, ski-out chalet with fantastic access to the slopes as well as the nearby village
- We loved all the amenities at Chalet Rama - adults loved the pool and gym while the kids loved the cinema room
- Waking up to a freshly made breakfast by a private chef each day was a dream come true for us. We never wanted to leave!

What you should know...

- Please ensure that children are always supervised when using wellness facilities like the swimming pool and sauna
- Please be aware that Chalet Rama is spread across several levels with no elevator, so it may not be suitable for people with mobility issues
- If you wish to explore beyond Chalet Rama, we recommend renting a vehicle for the duration of your stay

Terms & Conditions

- **Security deposit:** Secure link sent to the client's email to fill in the details of the client's bank card online 2 weeks before the arrival for the amount of €10,000. Funds won't be taken or blocked on the credit card in this case.
- **Arrival time:** Check-in 5:00 P.M.
- **Departure time:** Check-out 10:00 A.M.
- **Energy costs included?:** Yes, included in the rental price.
- **Linen & towels included?:** Yes, included in the rental price.
- **Pets welcome?:** Not allowed.
- **Changeover day:** Saturday.
- **End of stay cleaning available?:** Yes. However, guests are required to leave the accommodation clean, tidy and in the same condition as on their arrival. Any extra cleaning, laundry, maintenance and/or rubbish disposal required will be charged against the security deposit.
- **Smoking Allowed?:** Smoking & Vaping are not permitted.
- **Minimum stay:** 7 nights. All other durations on request.
- **Heating costs included?:** Yes, included in the rental price.
- **Tax:** French Visitors Tax payable alongside balance (typically costs €1-€5 per adult per night- please enquire if exact amount is required).
- **Internet access?:** Wi-Fi internet access included.