

Chalet Chabichou

Region: 3 Valleys Sleeps: 10

Overview

Discover laid-back luxury this winter at Chalet Chabichou, a stunning mountain retreat located in the picturesque village of Courchevel. With its prime location in the heart of the world-renowned Three Valleys ski resort, this luxury chalet offers guests an unforgettable experience with stunning views, Alpine architecture, and modern amenities that make Chalet Chabichou the perfect destination for families and groups of friends looking for a luxurious winter vacation.

Built with traditional Savoyard architecture in mind, Chalet Chabichou features beautiful wooden beams and wooden accents set against charming interior design. The interior of the chalet is designed to reflect its Alpine surroundings, with warm and inviting colours, natural materials, and elegant furnishings throughout.

As you enter the chalet, you'll be greeted by a spacious relaxation area containing an indoor hot tub, a rejuvenating sauna, an Italian-style shower, and sofas gathered around a satellite TV. Beside the entrance hall is a large ski room with dedicated storage facilities and boot warmers, ensuring your equipment is warm and dry ahead of your next excursion.

Chalet Chabichou's main communal area comprises of a large open-plan living space and a kitchen diner. Your living room is furnished with comfortable sofas, a cosy log fire, and large windows that offer breath-taking views of the surrounding mountain to prove a beautiful space to relax after a long day's activities. The open-plan dining room can comfortably sit your whole group for relaxed mealtimes, while your kitchen is fully equipped with all the modern appliances needed to whip up delicious meals.

Split across four levels, Chalet Chabichou's four



bedrooms are located on the two middle floors. Two bedrooms have double beds, one features two singles, while a large family room features two single beds and a set of bunk beds. Each room has a private en-suite bathroom for the privacy and convenience of your party.

Facilities

Skiing • Ski Lift Nearby • Bus/Shuttle To Slopes • Walk To Slopes • Wellness • Ski Chalet • Ideal for Xmas/NY • Paragliding • Self-Catered • Ski-In/Ski-Out • Walking/Hiking Paths • Walk to Village • Ideal for Kids • Cots (Cribs) • Ideal for Teens • All Bedrooms En-Suite • Modern • Parking Space • Walk to Restaurant • Wi-Fi/Internet • Lakes and Mountains • Washing Machine • Outstanding Landscapes • Coffee Machine • Hairdryer • Outdoor Pursuit & Activities • Tourist Towns & Villages • TV • Hot Tub • Tumble Dryer • Dishwasher • Microwave • Safety Deposit Box • Sauna/Steam • Heating • Bathroom Toiletries • High Chair(s)

Interior & Grounds

The Chalet

Below Ground Floor

- Sauna
- Indoor Jacuzzi
- Italian style shower
- Wood stove
- Ski room
- Laundry room

Ground Floor

- Family bedroom (sleeps four) with one bunk bed, two single beds and en-suite bathroom with bathtub

First Floor

- Bedroom with a double bed and en-suite bathroom with bathtub
- Bedroom with a double bed and en-suite bathroom with shower
- Bedroom with twin beds and en-suite bathroom with shower
- WC

Second Floor

- Living area with TV lounge
- Dining area
- Fully fitted kitchen
- WC

Outdoor Grounds

- Garage
- Parking space
- Terrace's
- Balconies

Additional Facilities

- Wi-Fi
- Boots heater
- Safe
- Ski locker
- TV



- Dishwasher
- Coffee machine
- Washing machine and Dryer
- Freezer/Fridge
- Oven
- Microwave
- Hairdryers
- Baby cot and Highchair (please request)

Location & Local Information

Set in a quiet corner of Courchevel, a world-famous ski resort in the heart of the French Alps, Chalet Chabichou has one of the best locations you could ask for when looking for your next ski break.

Courchevel is part of the Three Valleys ski area, the world's largest interconnected ski area, with over 600km of pristine to provide endless opportunities for skiing, snowboarding, and more.

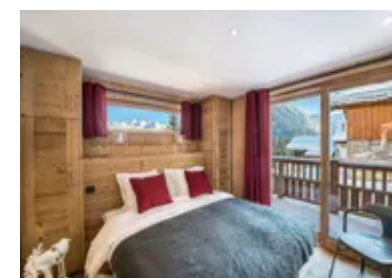
To start your holiday off, making your way to Chalet Chabichou is relatively straightforward and easy. With an on-site garage, Chalet Chabichou has wonderful provisions should you wish to drive directly to the property from your home or from another destination in a rental vehicle.

If you wish to fly into the area, Chalet Chabichou's nearest airports are Lyon in France and Geneva in Switzerland, both of which are around a two-and-a-half drive away. From either airport, you can arrange for private transfers or take a rental car to the resort. There are also regular transfer services that operate from both airports to Courchevel during the winter season, however, these take slightly longer than a private transfer.

When not on the slopes, Courchevel boasts an aquatics centre with an indoor pool, waterslides, and a spa as well as a variety of shops, bars, and restaurants in the village.

Local Amenities

Nearest Airport 2	Geneva Airport (138 km)
Nearest Village	Courchevel 1550 (850 m)
Nearest Restaurant	L'Œil de Bœuf (750 m)
Nearest Bar/Pub	Le Catérail (1 km)



Nearest Supermarket	Combe des Saveurs (1 km)
Nearest Piste	Sentier Piéton (200 m)
Nearest Ski Hire	Skiset Raymonde Sports (750 m)
Nearest Ski Lift	Grangettes (750 m)

What we love

- We found that Chalet Chabichou was wonderfully spacious, even when at maximum occupancy
- The views from Chalet Chabichou were absolutely beautiful
- As a mixed group of skiers and non-skiers, Chalet Chabichou was perfect for us as it was close to both the slopes and nearby village

What you should know...

- Please let us know at the time of booking if you will be travelling with an infant so that the chalet staff can arrange for highchairs and baby cots to be set up in the chalet ahead of your arrival
- Please note that children under the age of five are advised not to use the wellness facilities, and older children should always be supervised when doing so
- As the Courchevel resort is split across several villages and elevations, we recommend renting a vehicle throughout your stay to get around

Terms & Conditions

- **Security deposit:** Secure link sent to the client's email to fill in the details of the client's bank card online 2 weeks before the arrival for the amount of €4,000. Funds won't be taken or blocked on the credit card in this case.
- **Arrival time:** Check-in 5:00 P.M.
- **Departure time:** Check-out 10:00 A.M.
- **Energy costs included?:** Yes, included in the rental price.
- **Linen & towels included?:** Yes, included in the rental price.
- **Pets welcome?:** Not allowed.
- **Changeover day:** Saturday.
- **End of stay cleaning available?:** Yes. However, guests are required to leave the accommodation clean, tidy and in the same condition as on their arrival. Any extra cleaning, laundry, maintenance and/or rubbish disposal required will be charged against the security deposit.
- **Smoking Allowed?:** Smoking & Vaping are not permitted.
- **Minimum stay:** 7 nights. All other durations on request.
- **Heating costs included?:** Yes, included in the rental price.
- **Tax:** French Visitors Tax payable alongside balance (typically costs €1-€5 per adult per night- please enquire if exact amount is required).
- **Internet access?:** Wi-Fi internet access included.