

# Chalet Lyla

Region: 3 Valleys Sleeps: 10

---

## Overview

Chalet Lyla is an exquisite Alpine retreat that effortlessly combines traditional charm with modern luxury. It is an ideal destination for both winter and summer escapes in Courchevel. Whether you're seeking a cosy winter hideaway or a summer haven in the mountains, Chalet Lyla offers the perfect blend of comfort, style, and convenience.

Built in the classic Savoyard style, the chalet's wood and stone exterior harmonizes beautifully with the surrounding natural landscape. Inside, the chalet is equally captivating, featuring elegant furnishings and contemporary touches that create a warm and inviting atmosphere.

The main living area, located on the top floor, is the heart of Chalet Lyla. With its vaulted ceilings, exposed wooden beams, and large fireplace, this open-plan space offers a perfect gathering spot for your group. The area includes plush seating with large sofas, a wall-mounted TV, a spacious dining table, and a fully equipped kitchen. Floor-to-ceiling windows frame breathtaking views of the mountains, and the balcony provides an ideal spot to savour a morning coffee or an evening glass of wine.

For your convenience, Chalet Lyla is fully serviced, with attentive staff who go the extra mile to ensure your stay is unforgettable. A delicious breakfast is prepared and served each morning at no additional cost, setting the tone for a day of adventure or relaxation.

The chalet features five beautifully appointed bedrooms, each with an en-suite bathroom and two single beds or a double bed. These rooms are tastefully decorated with plush bedding and warm lighting, offering a cosy retreat after a day of exploring the mountains.

**The chalet is available year-round, but facilities, property and local amenities may vary depending upon season.**

## Winter | Ski Chalet

### December - April

In winter, Chalet Lyla is a dream come true for ski enthusiasts. With ski-in, and ski-out access to the slopes and proximity to the village centre, you're perfectly positioned to enjoy Courchevel's world-class skiing and vibrant après-ski scene. After a day on the slopes, unwind in the chalet's fantastic wellness area, which includes an indoor swimming pool and a sauna. For entertainment, there's also a cinema room with a large screen and comfortable seating.

## Summer | Alpine Chalet



## July - August

During the summer months, Chalet Lyla transforms into a tranquil retreat where you can enjoy the beauty of the Alpine landscape. Easy access to hiking trails, mountain biking, and other outdoor activities gives you plenty of opportunities to explore the stunning surroundings. The village centre remains just a short stroll away, offering a range of restaurants, bars, and shops to enjoy after a day of adventure.

Chalet Lyla is the ultimate destination for a luxurious and memorable mountain escape, whether the allure of winter sports or the serenity of a summer getaway draws you.

## Facilities

Horse Riding • Ski Lift Nearby • Walk To Slopes • Wellness • Ski Chalet • Ideal for Xmas/NY • Paragliding • Self-Catered • Skiing • Cycling • Tennis Nearby • Watersports • Ski-In/Ski-Out • Walking/Hiking Paths • Walk to Village • Ideal for Kids • Golf Nearby • Private Pool • Cots (Cribs) • Ideal for Teens • Wow Factor • Instagrammable • Indoor Pool • Modern • Parking Space • Walk to Restaurant • Wi-Fi/Internet • Lakes and Mountains • Summer Chalet • Washing Machine • Coffee Machine • Outstanding Landscapes • Outdoor Pursuit & Activities • Hairdryer • Tourist Towns & Villages • TV • Tumble Dryer • Dishwasher • Microwave • Safety Deposit Box • Sauna/Steam • Home Cinema • Working Fireplace/Woodburner • Heating • Half Board • Breakfast Included • Bathroom Toiletries • Ideal for Babies & Toddlers • High Chair(s)

# Interior & Grounds

## The Chalet

### Level -2

- Garage
- Cinema room

### Level -1

- Sauna
- Indoor swimming pool
- Tea lounge
- Relaxation area
- Wellness area
- Laundry room
- Bathroom with a double Italian shower

### Ground Floor

- Ski room
- Cloakroom
- Bedroom with a double bed (separable, please request) and en-suite bathroom with walk-in shower
- Bedroom with twin beds (possibility of a double bed, please request) and en-suite bathroom with shower
- WC

### Level 1

- Two bedrooms with a double bed (separable, please request) and en-suite bathroom with shower
- Master bedroom with a double bed and en-suite bathroom with a bathtub and shower
- WC

### Level 2

- Living area
- Dining room
- Breakfast area
- Kitchen
- Terrace
- Balcony
- TV lounge

## Additional Facilities



- Parking space
- Elevator
- Boots heater
- Safe
- Ski locker
- Wood fireplace
- TV
- Wi-Fi
- Hairdryers
- Cot and Highchair
- Outdoor furniture
- Parking space
- Microwave
- Raclette and Fondue machine
- Coffee machine
- Dishwasher
- Washing machine
- Dryer
- Oven

# Location & Local Information

Chalet Lyla is located in the prestigious village of Courchevel Le Prazl, which is part of Les Three Valleys ski area - the largest ski area in the world. Set within the French Alps' iconic Savoie region, Chalet Lyla is ideal for groups looking for the perfect blend of tranquillity and action.

The nearest airports to Courchevel are Geneva in Switzerland and Lyon in France, which are both around a two-and-a-half car drive from the resort. From either airport, you can arrange for a private transfer service to take you directly to the chalet or rent a car and drive yourself to the resort.

Once settled in Courchevel, your proximity to everything Alpine means that you can get started enjoying a wide range of activities, both on and off the slopes, in no time at all. The chalet is ideally located for skiing, with ski-in, ski-out access allowing you to hit the slopes right from the chalet's doorstep.

The nearby village is also within walking distance and is home to a wonderful variety of shops, restaurants, bars, and clubs. The resort has a reputation for being a luxurious winter wonderland, with a number of Michelin-starred restaurants to choose from and several world-class spa centres in the area.

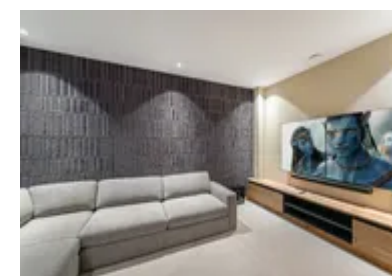
Beyond skiing, the area offers plenty of other mountain activities such as ice-skating, snow trekking, and even paragliding in the right conditions.



All-Year Activities	Winter Activities	Summer Activities
<ul style="list-style-type: none"> <li>- Paragliding</li> <li>- Ice Skating</li> <li>- Mountaineering</li> <li>- Heritage Tours</li> <li>- Fitness Courses</li> <li>- Bowling</li> <li>- Wine tasting</li> <li>- Culture and heritage tours</li> </ul>	<ul style="list-style-type: none"> <li>- Skiing</li> <li>- Ski Off Piste</li> <li>- Ski Touring</li> <li>- Ski la Vallee Blanche</li> <li>- Snowboarding</li> <li>- Cross Country Skiing</li> <li>- Ice Climbing</li> <li>- Dog Sledging</li> <li>- Heliski</li> <li>- Snowshoeing</li> <li>- Speed Riding</li> <li>- Ski Joering</li> <li>- Adaptive Skiing</li> <li>- Telemark</li> </ul>	<ul style="list-style-type: none"> <li>- Trekking and Hiking</li> <li>- Cycling</li> <li>- Trail Running</li> <li>- Rock Climbing</li> <li>- Road Cycling</li> <li>- Water Sports</li> <li>- Golf / Mini-golf</li> <li>- Via Ferrata</li> <li>- Horse Riding</li> <li>- Adventure and Fun Parks</li> <li>- Tennis</li> <li>- Squash</li> <li>- Lake Swimming</li> <li>- Fishing</li> <li>- Paintballing</li> </ul>

## Local Amenities

Nearest Airport	<b>Geneva (191 km)</b>
Nearest Village	<b>Courchevel - Le Praz (50 m)</b>



Nearest Restaurant	<b>Restaurant Azimut (100 m)</b>
Nearest Bar/Pub	<b>Bar La Descente (200 m)</b>
Nearest Supermarket	<b>8 À Huit (80 m)</b>
Nearest Piste	<b>Le Praz (200 m)</b>
Nearest Ski Hire	<b>Intersport (74 m)</b>
Nearest Ski Lift	<b>Le Praz (200m)</b>
Nearest Track	<b>Le Praz (200 m)</b>
Nearest Equipment Hire	<b>Intersport (74 m)</b>
Nearest Lift	<b>Le Praz (200 m)</b>
Nearest Golf	<b>Golf Club de Courchevel (8.1 km)</b>
Nearest Tennis	<b>Tennis La Tania (2.7 km)</b>

## What we love

- With its picture-perfect Alpine design, Chalet Lyla was like something out of a fairy-tale!
- The chalet staff were so lovely, nothing was ever too much to ask, and we loved the breakfasts they prepared for us each morning
- As a mixed group of skiers and non-skiers, Chalet Lyla was perfectly central to everything in the resort which meant nobody ever felt left out

## What you should know...

- Please ensure that children are always supervised when using wellness facilities such as the sauna and swimming pool
- As the Courchevel resort is spread across several connected villages, we recommend renting a vehicle during your stay if you wish to explore the wider area
- As Chalet Lyla is located in a mountainous area, please be aware that the streets around the chalet can sometimes be steep and uphill which may not be suitable for all guests

# Terms & Conditions

- **Security deposit:** €5,000, paid via bank transfer to the owner 30 days before arrival and refunded two weeks after departure, subject to full inspection.
- **Arrival time:** Check-in 5:00 P.M.
- **Departure time:** Check-out 10:00 A.M.
- **Energy costs included?:** Yes, included in the rental price.
- **Linen & towels included?:** Yes, included in the rental price.
- **Pets welcome?:** Pets are not allowed.
- **Changeover day:** Saturday.
- **End of stay cleaning available?:** Yes and daily housekeeping service and mid-stay linen change. However, guests are required to leave the accommodation clean, tidy and in the same condition as on their arrival. Any extra cleaning, laundry, maintenance and/or garbage disposal required will be charged against the security deposit.
- **Smoking Allowed?:** Smoking & Vaping are not permitted.
- **Minimum stay:** 7 nights. All other durations on request.
- **Heating costs included?:** Yes, included in the rental price.
- **Tax:** French Visitors Tax payable alongside balance (typically costs €1-€5 per adult per night- please enquire if exact amount is required).
- **Internet access?:** Wi-Fi internet access included.

**The chalet is available year-round, but facilities, property and local amenities may vary depending upon season.**