

Chalet Amelie

Region: 3 Valleys Sleeps: 11

Overview

Chalet Amelie is a luxurious and modern chalet located in the heart of Courchevel, one of the most exclusive ski resorts in the world. Set on the slope of a nature reserve, this chalet boasts a stunning blend of traditional Savoie contemporary and modern elegance in its design.

Spread across four spacious floors, Chalet Amelie features five delightful bedrooms capable of sleeping up to eleven guests. Its central living space is impressive, with an open-plan living room and dining area, complete with a cosy fireplace and comfortable seating. Large windows surround the space to provide plenty of natural light, while a spacious balcony opens up to offer stunning views of the snow-capped mountains.

Your dining space is comfortable and elegant with a large table that can easily accommodate your whole group. A well-equipped kitchen sits beside it, perfect for preparing meals for family and friends in good company. Breakfasts, however, are a time to focus on preparing for the day's activities as the chalet's staff will visit each morning to provide a beautiful breakfast ahead of your departure.

Spread across the property, Chalet Amelie features five en-suite bedrooms, each elegantly decorated with luxurious linens and modern amenities. Four bedrooms feature double beds, while the fifth is comprised of three singles - perfect for kids to bunk together.

For those looking to unwind after a long day on the slopes, Chalet Amelie features a delightful wellness area, complete with a hot tub and sauna, just for doing so. Additional amenities include a purpose-built home cinema, a laundry room, and a dedicated equipment storage room.

Location-wise, the chalet is conveniently located just a



few minutes walk from the centre of Courchevel, providing easy access to the resort's many shops, restaurants, and bars. The nearest ski lift is also just a short walk away, making it easy to hit the slopes and explore the vast ski area of the Three Valleys.

Facilities

Ski Lift Nearby • Walk To Slopes • Self-Catered • Ski-In/Ski-Out • Walk to Village • Wellness • Ideal for Kids • Ideal for Xmas/NY • Ski Chalet • Ideal for Teens • Cots (Cribs) • Wow Factor • All Bedrooms En-Suite • Modern • Parking Space • Walk to Restaurant • Wi-Fi/Internet • Lakes and Mountains • Washing Machine • Coffee Machine • Hairdryer • TV • Lift • DVD • Hot Tub • Tumble Dryer • Dishwasher • Microwave • Safety Deposit Box • Home Cinema • Working Fireplace/Woodburner • Heating • Breakfast Included • Ideal for Babies & Toddlers • High Chair(s)

Interior & Grounds

The Chalet

Chalet Interiors:

Ground Floor:

- Garage
- Lobby

First Floor:

- Indoor jacuzzi
- Hammam
- Cinema Room
- Laundry Room

Second Floor:

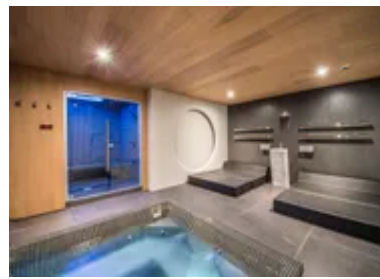
- Bedroom with a double bed, wardrobe, safe and an ensuite bathroom with a shower, towel dryer, hairdryer, toilet and a single sink
- Bedroom was a double bed wardrobe, safe and an ensuite bathroom with a shower, towel dryer, hairdryer, toilet and a single sink
- Ski Room

Third Floor:

- Master bedroom with a double bed, wardrobe, safe and an ensuite bathroom with a bathtub, shower, double sink, towel dryer and an independent toilet
- Children's bedroom with three single beds, a wardrobe and ensuite bathroom with a shower, towel dryer, hairdryer and a single sink
- Bedroom with a double bed, wardrobe, terrace, safe and an ensuite bathroom with a shower, towel dryer, hairdryer, independent toilet and single sink
- Separate WC

Forth Floor:

- Living Room
- Dining Room
- Open kitchen
- Balcony



- Terrace
- Central fireplace

Additional Facilities

- Elevator
- Garage
- Wood fireplace
- Ski locker
- Boots heater
- Outdoor furniture
- Wifi
- TV
- Home cinema
- DVD player / Blu-ray
- Baby cot and High chair (available upon request)
- Microwave
- Fridge
- Freezer
- Raclette and Fondue appliances
- Vacuum
- Iron and Ironing board
- Nespresso coffee machine
- Kitchen exhaust hood
- Kettle
- Toaster
- Ceramic hobs
- Dishwasher
- Washing machine
- Dryer
- Oven

Location & Local Information

Situated in the heart of Courchevel, Chalet Amelie benefits from a truly envious position within the resort. Easily accessible by road, train, and air, Courchevel is a popular destination for both domestic and international visitors.

To get to Chalet Amelie, you can drive directly to the chalet from home, or you can fly to the nearby airports of Geneva and Lyon both of which are around a two-hour drive away. From the airport, you can arrange for a transfer to the resort or rent a vehicle from one of the many rental providers. Alternatively, you can take the train to Moutiers, which is just a 30-minute drive from the chalet.

Once in Courchevel, you can use the resort's free shuttle service to get around, or they can rent a car to explore the surrounding area. Its location is truly exceptional, with breath-taking views of the surrounding mountains and easy access to the slopes and local amenities.

The chalet is just a few minutes' walk from town as well as the nearest ski lift, which provides access to the entire Three Valleys ski area. In addition to skiing, Courchevel offers a wide range of activities, including snowboarding, ice skating, snowshoeing, and paragliding.

In terms of dining and entertainment, Courchevel offers a wonderful range of options, from casual mountain restaurants to Michelin-starred fine dining. There are also a number of bars and nightclubs in the resort.

Local Amenities

Nearest Airport	Geneve Airport (183 km)
Nearest Airport 2	Lyon Airport (181 km)
Nearest Bar/Pub	Le Caterail (120 meters)
Nearest Piste	Proveres (20 meters)



Nearest Restaurant	La Chapelle 1550 (180 meters)
Nearest Ski Hire	Intersport (69 m)
Nearest Ski Lift	Grangettes (250 m)
Nearest Supermarket	Combe des Saveurs (100 meters)
Nearest Village	Courchevel Village 1550 (100 meters)

What we love

- We loved how modern Chalet Amelie was inside while maintaining its picturesque Alpine exterior
- The breakfast service was perfect for our group as it let us sleep in a little longer and not have to worry about waking up to prepare food during our holiday
- As a mixed group of skiers and non-skiers, we loved how close Chalet Amelie was to everything which kept everyone in the group happy

What you should know...

- If you're planning on visiting the chalet with infants, please let us know at the point of booking so that the chalet staff can provide amenities such as cots and highchairs for you
- Children under the age of five are advised against using the hot tub and steam room, and older children should always be supervised when doing so
- The Courchevel resort is spread over several villages around the mountain, so we advise renting a car during your stay if you wish to explore the wider resort

Terms & Conditions

- **Security deposit:** Secure link sent to the client's email to fill in the details of the client's bank card online 2 weeks before the arrival for the amount of €10,000. Funds won't be taken or blocked on the credit card in this case.
- **Arrival time:** Check-in 5.00 p.m.
- **Departure time:** Check-out 10.00 a.m.
- **Energy costs included?:** Yes, included in the rental price.
- **Linen & towels included?:** Yes, included in the rental price.
- **Pets welcome?:** Not allowed.
- **Changeover day:** Saturday.
- **End of stay cleaning available?:** Yes, daily maintenance and cleaning included. However, guests are required to leave the accommodation clean, tidy and in the same condition as on their arrival. Any extra cleaning, laundry, maintenance and/or rubbish disposal required will be charged against the security deposit.
- **Smoking Allowed?:** Smoking & Vaping are not permitted.
- **Minimum stay:** 7 nights.
- **Heating costs included?:** Yes, included in the rental price.
- **Tax:** French Visitors Tax payable alongside balance (typically costs €1-€5 per adult per night- please enquire if exact amount is required).
- **Internet access?:** Wi-Fi internet access included.