

Chalet Floriane

Region: 3 Valleys **Sleeps:** 14

Overview

Chalet Floriane is a beautiful Alpine retreat located in the charming village of Courchevel 1550. The chalet boasts an authentic mountain feel, with stunning stone and wood finishes throughout, combined with modern amenities and panoramic views of the surrounding mountains.

The main living area of the chalet is spacious and open, with high ceilings and large windows that allow plenty of natural light to flood the room. The living room is equipped with comfortable sofas, armchairs, a beautiful, modern fireplace, and a large TV to create the perfect atmosphere for cosy evenings. There is also a dining area with a large table and a fully equipped kitchen, complete with modern appliances. Breakfasts, however, are provided by the chalet staff to help you get your day's started with ease.

Outside, guests can take in the breath-taking views from the chalet's spacious balcony, which is equipped with outdoor furniture, making it the perfect spot to relax and take in the fresh mountain air.

The chalet features five bedrooms, each with its own en-suite bathroom. Four bedrooms are laid out in a double configuration, while the fifth features a double and two sets of bunk beds together in one room. Additionally, Chalet Floriane has a lounge with a bar, snooker tables and an additional TV, as well as a laundry room and a purpose-built ski room.

The location of Chalet Floriane is ideal for those looking for a peaceful retreat away from the hustle and bustle of the main resort areas while still being within easy reach of all the amenities Courchevel has to offer.

In the summer months, the area offers a range of outdoor activities, including hiking, mountain biking, and



paragliding. The village of Courchevel Le Praz is also home to a number of charming restaurants, bars, and shops, making it the perfect place to unwind after a day of outdoor activities.

Facilities

Walking/Hiking Paths • Ski Lift Nearby • Walk To Slopes • Ski Chalet • Ideal for Xmas/NY • Self-Catered • Skiing • Ski-In/Ski-Out • Walk to Village • Ideal for Kids • Cots (Cribs) • Maid Service Included • Ideal for Teens • Modern • Parking Space • Walk to Restaurant • Wi-Fi/Internet • Lakes and Mountains • Washing Machine • Outstanding Landscapes • Outdoor Pursuit & Activities • Tourist Towns & Villages • TV • Pool/Snooker • Games Room • Tumble Dryer • Dishwasher • Microwave • Working Fireplace/Woodburner • Heating • Breakfast Included • Ideal for Babies & Toddlers • High Chair(s)

Interior & Grounds

The Chalet

Second Floor

- Living Room
- Dining Room
- Balcony
- Fully fitted kitchen
- Central fireplace

First Floor

- Master bedroom with a double bed, wardrobe, balcony, TV and an ensuite bathroom with a bathtub
- Bedroom with a double bed (option to separate into two single beds) and an ensuite bathroom with shower
- Separate WC

Ground Floor

- Bedroom with a double bed (option to separate into two single beds) and an ensuite bathroom with shower
- Ski Room
- Lobby

Lower level

- Family bedroom with one double bed (option to separate into two single beds) and two bunk beds (sleeps two persons) and an ensuite bathroom with a shower
- Bedroom with a double bed (option to separate into two single beds) and an ensuite bathroom with bathtub

Second lower level

- Bar
- Lounge with TV
- Snooker
- Laundry Room

Additional Facilities

- High chair and cot (on request)
- Boots heater
- Ski locker
- Ceramic hobs



Location & Local Information

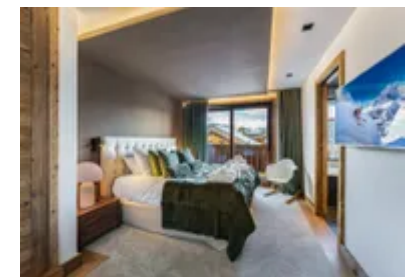
Chalet Floriane is located in the picturesque Courchevel ski resort, one of the five villages that make up the world-renowned Courchevel ski resort in the French Alps. The village is situated at an altitude of 1550m, surrounded by stunning mountain scenery and forests, and is known for its charming, traditional architecture and authentic Alpine atmosphere.

During the winter months, Courchevel is one of the most popular ski resorts in the world, known for its vast and varied ski terrain, including over 600km of pistes as part of the Three Valleys ski zone. The resort is suitable for all levels of skiers and snowboarders, with dedicated areas for beginners, as well as more challenging off-piste areas for experienced skiers.

In addition to skiing, you can enjoy a wonderful range of additional winter activities, including snowmobiling, dog-sledding, and cross-country skiing. In town, you'll find the nearby village to be home to a number of charming restaurants, bars, and shops, as well as a lively après-ski scene, making it the perfect place to unwind after a day on the slopes.

Local Amenities

Nearest Airport	Geneva Airport (183 km)
Nearest Airport 2	Lyon Airport (181 km)
Nearest Village	Courchevel Village (1550) (150 meters)
Nearest Restaurant	Pizzeria La Corto (240 meters)
Nearest Bar/Pub	Le Caterail (150 meters)
Nearest Supermarket	Combe de Saveurs (120 meters)



Nearest Piste	Grangettes (150 meters)
Nearest Ski Lift	Grangettes (150 m)
Nearest Ski Hire	Skiset Raymonde Sports (300 m)

What we love

- The floor-to-ceiling windows provide incredible views from Chalet Floriane's.
- Chalet Floriane's location is great for skiers thanks to its close proximity to the slopes.
- There is a housekeeper available for daily cleaning and helping of the breakfast service.

What you should know...

- The various levels of Chalet Floriane are accessible by staircase only.
- Courchevel is a large resort with several interconnected villages around the mountain, it is recommended to have a car.
- Please let us know in advance if you plan to travel with infants so that the chalet staff can prepare highchairs and cots ahead of your arrival.

Terms & Conditions

- **Security deposit:** €10,000 paid via bank transfer to the owner 30 days before arrival and refunded two weeks after departure, subject to full inspection.
- **Arrival time:** Check-in 5.00 PM.
- **Departure time:** Check-out 10.00 AM.
- **Energy costs included?:** Yes, included in the rental price.
- **Linen & towels included?:** Yes, included in the rental price.
- **Pets welcome?:** Not allowed.
- **Changeover day:** Saturday.
- **End of stay cleaning available?:** Yes, daily cleaning and mid-stay linen change included. However, guests are required to leave the accommodation clean, tidy and in the same condition as on their arrival. Any extra cleaning, laundry, maintenance and/or rubbish disposal required will be charged against the security deposit.
- **Smoking Allowed?:** Smoking & Vaping are not permitted.
- **Minimum stay:** 7 nights.
- **Heating costs included?:** Yes, included in the rental price.
- **Tax:** French Visitors Tax payable alongside balance (typically costs €1-€5 per adult per night- please enquire if exact amount is required).
- **Internet access?:** Wi-Fi internet access included.