

Chalet Rochelle

Region: 3 Valleys **Sleeps:** 14

Overview

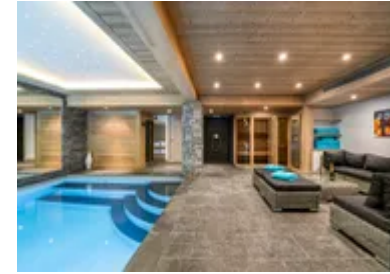
Tucked away on the quiet outskirts of Le Praz, Chalet Rochelle is a stunning six-bedroom luxury chalet that offers the ultimate mountain retreat. Known for its extensive network of ski slopes, high-end amenities, and breath-taking alpine scenery, Courchevel is the place to be for an upmarket ski break this winter.

Chalet Rochelle has been designed with both luxury and comfort in mind with interiors tastefully decorated with sleek, contemporary furnishings and modern appliances set against traditional alpine architecture. Its living room features a cosy fireplace, comfy seating, and a flat-screen TV with international channels. The dining area is located behind the lounge in an open-plan space and features a beautiful glass table set beneath a glittering chandelier. The chalet's fully equipped kitchen provides the perfect space for preparing delicious homemade meals with family and friends that can then be enjoyed together in the main dining space.

Chalet Rochelle's six bedrooms are all stylishly designed and equipped with comfortable mattresses and soft bedding to ensure you have a great night's sleep every night. All bedrooms are laid out in double configurations with beautiful en-suite bathrooms with the exception of the children's room which features two sets of bunk beds, sleeping four, and has access to a shared bathroom.

Additionally, Chalet Rochelle boasts a fantastic of luxurious amenities that are sure to delight guests of all ages. The private indoor swimming pool and sauna provide the perfect way to unwind and relax after a day on the slopes, or blow off steam between ski sessions.

The location of Chalet Rochelle is ideal for those looking to experience the best of the French Alps. With easy



access to the Three Valleys ski area and Courchevel centre, you can enjoy some of the best slopes and Alpine villages in the world, as well as a variety of other winter activities right on your doorstep.

Facilities

Wi-Fi/Internet • Bus/Shuttle To Slopes • Lakes and Mountains • Washing Machine • Coffee Machine • Wellness • Ski Chalet • Hairdryer • Ideal for Xmas/NY • Self-Catered • Skiing • Spa/Massage • Walking/Hiking Paths • Recommended • TV • Maid Service Available • Walk to Village • Cots (Cribs) • Wow Factor • Private Pool • Instagrammable • Modern • Ski Locker • Indoor Pool • Ideal for Babies & Toddlers • Ideal for Kids • Ideal for Teens • Pets on Request • Walk to Restaurant • Tumble Dryer • Dishwasher • Safety Deposit Box • Sauna/Steam • Home Cinema • Working Fireplace/Woodburner • Heating • High Chair(s) • Parking Space • Outstanding Landscapes • Outdoor Pursuit & Activities • Tourist Towns & Villages

Interior & Grounds

The Chalet

Interiors:

Level -2

- Massage Room
- Children's bedroom with two bunk beds and a wardrobe
- Laundry room
- WC
- Independent bathroom with a shower and double sink

Level -1

- Indoor swimming pool
- Sauna
- Hammam
- Italian style shower
- Relaxation area
- Garage
- Separate WC

Level 0

- Master bedroom with a double bed (160cm x 200 cm), wardrobe, TV, Safe and an ensuite bathroom with a bathtub, shower, double sink, towel dryer and an independent toilet
- Bedroom with a double bed (160cm x 200 cm), wardrobe, TV, Safe and an ensuite bathroom with a bathtub, walk-in shower, double sink, towel dryer and independent toilet
- Bedroom with a double bed (160cm x 200cm), wardrobe, TV, safe and an ensuite bathroom with a shower, towel dryer, toilet and a single sink
- Bedroom with a double bed (140cm x 200 cm), wardrobe, TV, safe and an ensuite bathroom with a walk-in shower, towel dryer, toilet and a single sink
- Bedroom with a double bed (140cm x 200 cm), wardrobe, TV, safe and an ensuite bathroom with a walk-in shower, towel dryer, independent toilet and single sink
- Ski Room

Level 1

- Lounge with TV
- Living room



- Dining room
- Open kitchen
- Balcony
- TV Lounge
- Fireplace
- Fully fitted kitchen
- Separate WC

Location & Local Information

Chalet Rochelle is located in the beautiful Alpine ski resort of Courchevel le Praz.

Conveniently located just a few minutes' walk from the ski slopes and a short drive from the resort's many high-end shops, restaurants, and bars, Chalet Rochelle is perfect for guests who like their peace and quiet while remaining in proximity to the centre of the action.

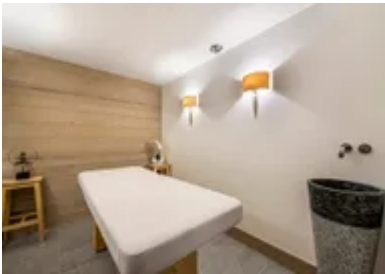
To reach the resort, you can fly into one of the nearby airports, such as Geneva or Lyon, both of which are around two and a half hours away. From there, you can easily arrange for a private transfer, take a taxi, or rent a car to reach the chalet.

The resort's ski area, known as the Three Valleys, is one of the largest in the world, with over 600km of idyllic ski slopes, making it a paradise for ski enthusiasts of all skill levels. The resort also offers a fantastic variety of après-ski activities, including live music, trendy bars, and delicious Alpine dining.

Courchevel is also well-known for its sophisticated cultural scene, with upmarket boutiques the norm, world-class spa facilities, and Michelin-star restaurants all calling the resort home.

Local Amenities

Nearest Airport	Geneva Airport (134 km)
Nearest Airport 2	Lyon Airport (178 km)
Nearest Bar/Pub	Bar La Descente (260 m)
Nearest Piste	Front de Neige du Praz (450 m)
Nearest Restaurant	Restaurant Azimut (190 m)



Nearest Ski Hire	Sport 2000 White Storm 1300 (190 m)
Nearest Ski Hire	Intersport - Le Praz (280 m)
Nearest Ski Lift	Praz (450m)
Nearest Supermarket	8 A Huit (270 m)
Nearest Village	Courchevel Le Praz 1300 (200 m)

What we love

- Chalet Rochelle blends contemporary furnishings with traditional alpine architecture for a stylish yet cosy retreat.
- Chalet Rochelle was perfect for our group as it was lovely and quiet while still being within walking distance of the slopes and village centre
- The bunk room was perfect when travelling as a mixed group with kids who wanted to spend all their time together

What you should know...

- Chalet Rochelle is located in Le Praz, just off the main road up to the other villages of Courchevel, if you would like to explore the other villages a car is recommended, but please do take advantage of the local free busses throughout the day
- The open-plan living and dining space, complete with fireplace and chandelier-lit dining, is designed for social gatherings.
- Please note that children under the age of five are advised against using the steam room, and older children should always be supervised when doing so
- Courchevel offers Michelin-star dining, luxury boutiques, spas, and family activities like dog-sledding and cinema nights.

Terms & Conditions

- **Security deposit:** Secure link sent to the client's email to fill in the details of the client's bank card online 2 weeks before the arrival for the amount of €8,000. Funds won't be taken or blocked on the credit card in this case.
- **Arrival time:** Check-in 5.00 PM.
- **Departure time:** Check-out 10.00 AM.
- **Energy costs included?:** Yes, included in the rental price.
- **Linen & towels included?:** Yes, included in the rental price.
- **Pets welcome?:** Yes, on request only and with prior agreement with the owner at a cost of 100€.
- **Changeover day:** Saturday.
- **End of stay cleaning available?:** Yes, end of stay cleaning is included (during the winter months only) for more information please enquire. Guests are required to leave the accommodation clean, tidy and in the same condition as on their arrival. Any extra cleaning, laundry, maintenance and/or garbage disposal required may be charged against the security deposit.
- **Smoking Allowed?:** Smoking & Vaping are not permitted.
- **Minimum stay:** 7 nights.
- **Heating costs included?:** Yes, included in the rental price.
- **Tax:** French Visitors Tax payable alongside balance (typically costs €1-€5 per adult per night- please enquire if exact amount is required).
- **Internet access?:** Wi-Fi internet access included.