

# Chalet Livie

Region: 3 Valleys   Sleeps: 13

---

## Overview

Chalet Livie is a stunning alpine retreat located in the heart of Courchevel, one of the most exclusive ski resorts in the French Alps. This particular chalet has been beautifully designed and decorated, combining traditional Alpine architecture with modern, luxurious furnishings and flourishes.

Throughout the chalet, guests will find a mix of natural wood, stone, and luxurious fabrics, creating a warm and inviting atmosphere that perfectly complements the stunning mountain surroundings. The attention to detail in the chalet's design and decoration is impressive, with a focus on creating a comfortable and welcoming space that's perfect for relaxing after a long day on the slopes.

Spread over four levels, Chalet Livie offers guests a spacious and comfortable living space, with six wonderfully cosy bedrooms, each with its own unique style and character. The living and dining areas are the heart of the chalet, with a large open-plan space that combines a comfortable lounge area with a roaring fireplace, a dining area that can seat up to ten guests, and a fully equipped kitchen that's perfect for preparing delicious meals for friends and family.

The bedrooms are spacious and well-appointed, with plush bedding, luxurious linens, and stunning mountain views. Chalet Livie features four double bedrooms, one twin, and a children's loft room which features two single beds and a set of bunk beds. Each room besides the children's room has its own private en-suite bathroom.

When it comes to amenities, you'll be spoiled for choice as this chalet features a fantastic range of luxury features, including an additional TV lounge so different people can watch what they want when they want, Apple TV-enabled



televisions, and a dedicated ski storage room near the chalet entrance.

## Facilities

Skiing • Ski Lift Nearby • Walk To Slopes • Ski Chalet • Ideal for Xmas/NY  
• Paragliding • Self-Catered • Ski-In/Ski-Out • Walking/Hiking Paths •  
Walk to Village • Ideal for Kids • Cots (Cribs) • Ideal for Teens •  
Instagrammable • Walk to Restaurant • Parking Space • Wi-Fi/Internet •  
Lakes and Mountains • Rural Location • Washing Machine • Coffee  
Machine • Hairdryer • Outdoor Pursuit & Activities • Tourist Towns &  
Villages • DVD • Tumble Dryer • Dishwasher • Microwave • Smart TV •  
Working Fireplace/Woodburner • Heating • Bathroom Toiletries • Ideal for  
Babies & Toddlers • High Chair(s)

# Interior & Grounds

## The Chalet

### Layout:

#### First Floor

- Ski Room
- Laundry room
- Lobby

#### Second Floor

- Bedroom with a double bed, wardrobe and an ensuite bathroom with a shower, towel dryer, hairdryer and toilet
- Master bedroom with a double bed, chest of drawers, wardrobe, terrace and ensuite bathroom with a bathtub, shower, hairdryer, toilet and single sink
- Bedroom with a double bed, wardrobe, dressing table and an ensuite bathroom with a shower, towel dryer, hairdryer, toilet, independent toilet and a single sink
- Bedroom with two single beds, wardrobe and dressing table
- Bedroom with a double bed, chest of drawers, wardrobe and an ensuite bathroom with a shower, towel dryer, hairdryer, toilet and a single sink
- Independent bathroom with a bathtub, towel dryer, hairdryer and single sink

#### Third Floor

- Living room
- Dining room
- Open kitchen
- Balcony
- Terrace
- Fireplace
- Separate WC

#### Fourth Floor

- TV Lounge
- Children's bedroom with two single beds, two bunk beds and a wardrobe
- Independent bathroom with a bathtub, towel dryer, hairdryer, toilet and a single sink



### **Additional Facilities**

- Wood fireplace
- Ski locker
- Parking space
- Outdoor furniture
- Baby cot and High chair (available upon request)
- Wifi
- Apple TV
- Decoder
- Blue-ray player
- DVD player / Blu-ray
- Coffee machine
- Microwave
- Fridge
- Freezer
- Raclette machine
- Vacuum
- Nespresso coffee machine
- Toaster
- Induction hobs
- Dishwasher
- Washing machine
- Dryer
- Oven

## Location & Local Information

Chalet Livie is a beautiful ski chalet located in the heart of Courchevel, one of the most prestigious ski resorts in the world. As part of the Three Valleys ski area, the largest interconnected ski area in the world, you'll have over 600km of pristine pistes right on your doorstep.

To get to Courchevel, the nearest international airport is Geneva International Airport, which is just over two hours away. Another option is to fly into Lyon which is a similar distance away. Both airports are well-served by transfer services, including private taxis and rental car centres.

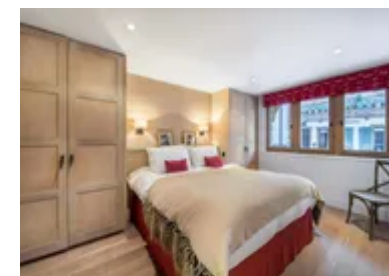
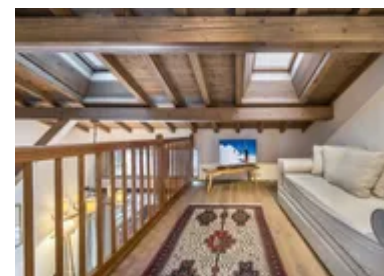
Once in Courchevel, Chalet Livie is conveniently just a few minutes from the town centre where you'll find amazing boutiques, delicious dining, and lively nightlife. If rest and relaxation is your main focus during this break, you'll find Courchevel's reputation as a luxury ski resort well-earned as it is home to some of the Alps' best spa and wellness centres.

You'll also be just a short hop away from the ski lifts and a plethora of winter activities where, in addition to skiing and snowboarding, there are plenty of other activities to do in the area, such as snowshoeing, cross-country skiing, ice skating, and sledding.



## Local Amenities

Nearest Airport	<b>Geneva Airport</b> (180 km)
Nearest Airport 2	<b>Lyon Airport</b> (178 km)
Nearest Village	<b>Courchevel - Le Praz</b> (1300) (0 km)
Nearest Restaurant	<b>Elephant Pizzeria</b> (45 m)
Nearest Bar/Pub	<b>Bar La Descente</b> (250 m)



Nearest Supermarket	<b>8 A Huit (190 m)</b>
Nearest Piste	<b>Murettes (300 m)</b>
Nearest Ski Lift	<b>Télécabine du Praz (300 m)</b>
Nearest Ski Hire	<b>Location Ski Courchevel (130 m)</b>

## What we love

- Our kids loved the dedicated kids' room and second TV lounge at Chalet Livie
- Chalet Livie's location was absolutely perfect for our trip as our group was split between skiers and non-skiers
- The little touches at Chalet Livie really helped to set it apart from other chalets, such as the champagne and welcome basket when we arrived

## What you should know...

- Please note that baby cots and high chairs for babies are available on request
- As a luxury resort, Courchevel can be slightly more expensive to visit than other ski resorts in the area
- Chalet Livie is spread across several levels with no elevator facilities, which may not be suitable for guests with mobility issues

# Terms & Conditions

- **Security deposit:** Secure link sent to the client's email to fill in the details of the client's bank card online 2 weeks before the arrival for the amount of €2,000. Funds won't be taken or blocked on the credit card in this case.
- **Arrival time:** Check-in 5.00 P.M.
- **Departure time:** Check-out 10.00 A.M.
- **Energy costs included?:** Yes, included in the rental price.
- **Linen & towels included?:** Yes, included in the rental price.
- **Pets welcome?:** Pets are not allowed.
- **Changeover day:** Saturday.
- **End of stay cleaning:** Standard changeover clean included in the price. Guests are required to leave the accommodation clean, tidy and in the same condition as on their arrival. Any extra cleaning, laundry, maintenance and/or rubbish disposal required will be charged against the security deposit.
- **Smoking Allowed?:** Smoking & Vaping are not permitted.
- **Minimum stay:** 7 nights.
- **Heating costs included?:** Yes, included in the rental price.
- **Tax:** French Visitors Tax payable alongside balance (typically costs €1-€5 per adult per night- please enquire if exact amount is required).
- **Internet access?:** Wi-Fi internet access included.