

# Apartment Etoile

Region: Espace Killy   Sleeps: 4

---

## Overview

Apartment Etoile is a stylish duplex retreat nestled in the heart of Val d'Isère, just a short stroll from the resort's celebrated slopes, lifts, and vibrant après-ski scene. Set within the sought-after Cygnaski Residence, this chic mountain hideaway offers a warm and welcoming base for up to four guests seeking a blend of Alpine charm and modern comfort.

The apartment's open-plan living and dining space feels instantly inviting, with soft neutral tones, natural wood finishes, and generous windows framing views of the surrounding peaks. After an exhilarating day on the slopes, unwind in the cosy lounge area or gather around the dining table for relaxed evening meals prepared in the fully equipped kitchen.

Upstairs, two beautifully presented bedrooms provide peaceful spaces for rest and relaxation. The master double bedroom opens onto a private terrace, while the flexible twin/double room can be arranged to suit your group. Two sleek bathrooms—one with a walk-in shower and another with a bathtub—complete the home's thoughtful layout.

A private ski locker, indoor parking, and building lift access ensure a seamless stay, while the apartment's location places you moments from Val d'Isère's boutiques, cafés, and lively restaurants. Whether you're planning a ski-filled week or a cosy Alpine escape, Apartment Etoile offers effortless style and comfort in one of the French Alps' most iconic resorts.



## Facilities

Skiing • Boot Heaters • Bus/Shuttle To Slopes • Walk To Slopes • Ideal for Xmas/NY • Self-Catered • Walking/Hiking Paths • Walk to Village • Ideal for Kids • Pets on Request • Cots (Cribs) • Special Offer • Ideal for Teens • Has Discount • Walk to Restaurant • Parking Space • Wi-Fi/Internet • Lakes and Mountains • Chalet Apartment • Washing Machine • Coffee Machine • Outstanding Landscapes • Hairdryer • Outdoor Pursuit & Activities • Tourist Towns & Villages • TV • Lift • Indoor Games • Tumble Dryer • Dishwasher • Microwave • Heating • Ski Locker • Bathroom Toiletries • Ideal for Babies & Toddlers • High Chair(s)

# Interior & Grounds

## The Apartment

### Ground Floor

- Dining area
- Fully equipped kitchen
- TV lounge
- Bathroom with a shower

### First Floor

- Bedroom with a double bed and terrace
- Bedroom with a twin or double bed (available on request)
- Bathroom with a bathtub

### Outside Grounds

- Balcony and upper-level terrace with outdoor seating and mountain views
- Allocated parking space

## Additional Facilities

- Ski locker
- Parking space
- Hairdryer
- TV
- Wi-Fi
- Xbox
- Dishwasher
- Fridge
- Freezer
- Kettle
- Toaster
- Induction hobs
- Oven
- Washing machine and dryer
- Cot and highchair (please request)



## Location & Local Information

Apartment Etoile is situated in the heart of Val d'Isère, a vibrant resort town located in the French Alps. Known worldwide as one of the best destinations for winter sports, Val d'Isère offers a wide range of outdoor activities and breathtaking mountain views, all within easy reach of Apartment Etoile.

Getting to the apartment is relatively straightforward, with nearby airports such as Lyon and Geneva around a three-hour drive away. From the airport, you can easily arrange a vehicle rental or dedicated resort transfer service.

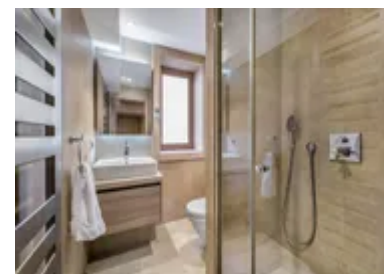
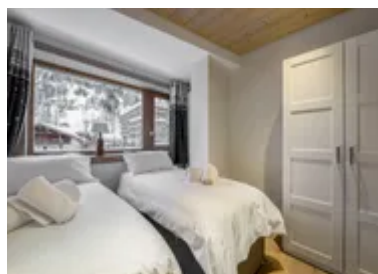
Apartment Etoile itself is conveniently located just a few steps from the slopes, providing guests with easy access to some of the best skiing and snowboarding in the world. As part of the Espace Killy ski area, Apartment Etoile provides unparalleled access to 300km of pistes, including some of the most challenging runs in Europe. While famous with thrillseekers, the wider ski area is suitable for all levels of skiers and snowboarders, from beginners to experts, and boasts numerous ski schools to help new skiers find their snow feet.

In addition to skiing and snowboarding, Val d'Isère also offers a wide range of winter activities, such as snowshoeing, ice skating, and snow tubing, ensuring that there is something for everyone to enjoy. The town also has a vibrant après-ski scene, with several world-class bars, restaurants, and nightclubs where you can relax and socialise after a long day on the slopes.

The resort itself is laid-back and lively, with wonderful social, shopping, and entertainment scenes that make Val d'Isère an excellent destination for all.

### Local Amenities

Nearest Airport	<b>Geneva</b> (177 km)
Nearest Airport	<b>Grenoble</b> (223 km)



Nearest Bar/Pub	<b>Le B'Bar Val d'Isère (300 m)</b>
Nearest Piste	<b>Solaise - La Face de Belvedere (500 m)</b>
Nearest Restaurant	<b>Restaurant La Baraque (300 m)</b>
Nearest Ski Hire	<b>Sport 2000 (450 m)</b>
Nearest Ski Lift	<b>Olympique &amp; Solaise (500 m)</b>
Nearest Supermarket	<b>SPAR (300 m)</b>
Nearest Village	<b>Val d'Isere (500 m)</b>

## What we love

- Apartment Etoile's location is unbeatable. Being just a few hundred meters away from the slopes makes it so easy for us to get to the ski lifts and start our day on the mountain
- The apartment is beautifully decorated, with modern furnishings and cosy accents that make it feel like a truly luxurious mountain retreat
- The balcony offers breath taking views, and we loved sitting outside and enjoying the panoramic views of the surrounding mountains and village after a day on the slopes

## What you should know...

- The apartment is located in a lively area of Val d'Isère, which can be noisy at times, especially during peak season
- The kitchen is well-equipped, but it is on the small side. If you plan on doing a lot of cooking, you may find it a bit cramped
- Please take care when on the terrace during the winter as it can be slippery when snowy.

# Terms & Conditions

- **Security deposit:** Secure link sent to the client's email to fill in the details of the client's bank card online 2 weeks before the arrival for the amount of €2000. This is in the form of a card authorisation, funds are not cashed
- **Arrival time:** Check-in 5:00 PM
- **Departure time:** Check-out 10:00 AM
- **Energy costs included?:** Yes, included in the rental price
- **Linen & towels included?:** Yes, included in the rental price
- **Pets welcome?:** One pet is permitted on request only and with prior agreement with the owner. If accepted, a pet supplement of €100 will apply.
- **Other Ts and Cs:** Please note that rental of a cot and highchair is at an extra cost paid directly to the owner: Cot: 40€ per week Highchair: 30€ per week
- **Changeover day:** Saturday
- **End of stay cleaning:** Standard changeover clean included in the price. Guests are required to leave the accommodation clean, tidy and in the same condition as on their arrival. Any extra cleaning, laundry, maintenance and/or rubbish disposal required will be charged against the security deposit.
- **Smoking Allowed?:** Smoking & Vaping are not permitted
- **Minimum stay:** 7 nights. All other durations on request
- **Heating costs included?:** Yes, included in the rental price
- **Tax:** French Visitors Tax payable alongside balance (typically costs €1-€5 per adult per night- please enquire if exact amount is required).
- **Internet access?:** Wi-Fi internet access included