

Apartment Emeline

Region: Paris Sleeps: 8

Overview

This luxurious loft, is situated in a magnificent location at the end of a paved courtyard of a former mansion, offering an ideal setting for a delightful stay in Paris.

Apartment Emeline spans across three spacious levels, with four bedrooms, accommodating up to eight guests. Access to this modern apartment is gained by ascending a charming stone staircase to the ground floor. This bright and airy ground floor features an open-plan layout of various living areas that surround the staircase, which also serves as a skylight at the heart of the apartment.

There is a theme through the entire apartment, whereby the serene white tones provide a tasteful backdrop for abstract paintings and unique brightly coloured furniture. These bright features command attention and bring some vibrancy into this chic apartment setting. To the left and right of the entrance, the living room is separated into two areas, providing ample space to relax and enjoy the abundance of natural light that pours into the room through the courtyard's vast windows. Behind each living room, you will find a social dining table, leading to the fantastic apartment kitchen crafted entirely of wood and steel and extending along the whole back wall of this floor.

Stepping downstairs, nestled beneath the courtyard, the basement houses two bedrooms, each boasting an expansive en-suite shower room. The spaces are cleverly designed to maximize the unusual spaces created by the staircase, with cosy alcoves, now transformed into elegant bathrooms.

Finally, you can climb the stairs to the top floor, where you will find the generously proportioned master bedroom to the right, with a large double bed and plenty of storage for



your belongings. To the left, the fabulous bathroom has been divided into three separate areas in a row: first, a vestibule with two sinks, followed by the main bathroom with a bathtub, and at the end, the toilet.

Apartment Emeline offers the perfect base for exploring the best attractions, restaurants and places Paris has to offer, sleeping up to eight guests, this modern apartment is perfect for families or groups of friends!

Facilities

Romantic • Hairdryer • Cycling • Historical Sites • Wi-Fi/Internet • Walking/Hiking Paths • Coffee Machine • City Homes & Apartments • Washing Machine • TV • Walk to Village • Cots (Cribs) • DVD • Easy By Train • Ideal for Kids • Ideal for Teens • Walk to Restaurant • <1hr to Airport • Tumble Dryer • Dishwasher • Microwave • High Chair(s) • Outdoor Pursuit & Activities • Tourist Towns & Villages

Interior & Grounds

The Apartment

Fully equipped, four-bedroom apartment, perfect for families or groups of friends looking to explore the history and culture of Paris.

Lower Ground Floor

- Bedroom with double bed and en-suite
- Bedroom adjustable beds (Double or Twin) with en-suite

Ground Floor

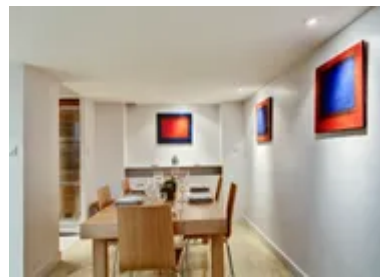
- Open-plan living area with sofas
- Open plan, well-equipped kitchen
- Dining area for 8-people and snug
- Twin bedroom
- Bathroom

First Floor

- Master bedroom with double bed
- Bathroom

Additional Facilities

- Hairdryer
- Wi-Fi
- TV and DVD player
- Bluetooth music system
- Iron & board
- Cot and Highchair
- Electric coffee machine



Location & Local Information

Apartment Emeline is situated in the small, historic neighbourhood of Pletzl, located in the 4th arrondissement of Paris, France. The name Pletzl comes from the Yiddish word "pletzel," meaning "little square." This area was historically the centre of the Jewish community in Paris, and it still retains much of its Jewish heritage and atmosphere today.

The streets of Pletzl are narrow and winding, with charming cobblestone alleys and several buildings that date back to the 17th and 18th centuries. These winding lanes are overflowing with small shops, bakeries, and restaurants serving traditional Jewish food, as well as synagogues and Jewish cultural centres.

The most famous landmark in Pletzl is the Memorial of the Shoah, a museum and memorial to the victims of the Holocaust. The museum documents the history of the Holocaust and the experiences of Jewish people in France during World War II and is well worth a visit during your stay. Pletzl is a fascinating and culturally rich area of Paris that offers a glimpse into the city's Jewish history and heritage, and it offers a brilliant base for exploring the rest of vibrant city.

Paris is a city with a rich history, culture, and cuisine, and there is no shortage of things to do on a breakaway in this beautiful city. No trip to Paris is complete without a visit to the iconic Eiffel Tower. You can take the elevator to the top for a breath-taking view of the city or sit underneath with a picnic and a bottle of wine, enjoying the lights.

The Louvre is another place not to be missed, it is one of the largest museums in the world and is home to some of the most famous artworks, including the Mona Lisa. You can spend an afternoon or even a whole day exploring the museum's vast collection!

Local Amenities



Nearest Airport	Paris Charles de Gaulle Airport (28.2 km)
Nearest Train Station	Chatelet Les Halles (1 km)
Nearest Supermarket	Sweet Escape (50 m)

What we love

- Every corner of this quirky, modern apartment has been utilised, with storage and bathrooms nestled into the nooks and crannies!
- Beautiful architecture makes this apartment completely unique, perfect for those looking for somewhere special to stay
- The location is brilliant for exploring some of Paris's top attractions!

What you should know...

- Entrance to the apartment is on the ground floor, accessed by an external stone staircase
- There is an elevator in the building
- Some of the attractions in Paris can involve long queues, so bring comfortable shoes and book ahead where you can

Terms & Conditions

- **Security deposit:** €1,000 to be charged to client's credit card upon arrival and refunded two weeks after departure, subject to full inspection
- **Arrival time:** 17:00
- **Departure time:** 11:00
- **Energy costs included?:** Yes, included in rental price
- **Linen & towels included?:** Yes, included in rental price
- **Pets welcome?:** Not allowed
- **Other Ts and Cs:** A non-refundable 50% deposit is required to confirm the booking (or full payment if booking within 12 weeks of departure).
- **End of stay cleaning available?:** Yes. However, guests are required to leave the accommodation clean, tidy and in the same condition as on their arrival. Any extra cleaning, laundry, maintenance and/or rubbish disposal required will be charged against the security deposit
- **Smoking Allowed?:** Smoking & Vaping are not permitted
- **Insurance:** Guests are required to be in possession of a valid insurance policy, which covers them for cancellations, loss of personal belongings, personal liability and any accidental damage caused during their stay
- **Minimum stay:** 4 nights. All other durations on request
- **Heating costs included?:** Yes, included in rental price
- **Tax:** City tax to be paid on arrival, price to be confirmed
- **Internet access?:** Wi-Fi internet access included