

# Apartment Esme

Region: France    Sleeps: 6

---

## Overview

Apartment Esme is a tastefully decorated, two bedroom apartment in Paris is the perfect holiday base for a group of up to four guests. Exuding a refined and unique style, every corner of this intimate apartment has been thought through to create calming living spaces where you can rest and relax, savouring your energy for exploring this vast and vibrant city. The apartment is located within the dynamic and trendy area of Saint-Paul, with beautiful architecture, narrow streets, numerous boutiques, and galleries all on your doorstep!

As you enter through the corridor, there are two bedrooms and a living/dining area on the right hand side, while the left leads to a separate toilet, bathroom, and modern kitchen. The overall style, inspired by Scandinavian design, radiates an understated yet sumptuous aesthetic.

The first double room features subtle black and white floral photographs surrounding a striking mirror with a three-dimensional wooden marquetry frame. The spacious bed with its feature headboard invites relaxation, while the contemporary furnishings complement the serene white tones. The second double room is decorated in almond green tones, the ambiance is more eclectic but still cosy. A Fernando Botero painting reproduction adds a touch of style, and a beautiful brown marble fireplace hosts two bird statuettes in the corner.

The kitchen, located at the end of the corridor has a Scandinavian chic style with a thick wooden countertop and beautiful brushed steel handles. Well equipped, you can whip up quick breakfasts or relaxed evening meals paired with a local bottle of wine. The social living room and dining area are accessed from the end of the corridor. A white, grey marble mantelpiece is a showpiece in the



room, flanked by a Modigliani portrait reproduction and a large picture with beautiful gradations of blue, green, and red.

Throughout this bright and airy apartment, the combination of simple modern design, carefully considered artworks and contemporary furnishings all work together to create a sublime holiday home. Whether you're interested in history, art, or shopping, you're sure to find something to enjoy here.

## Facilities

Laptop Friendly Workspace • City Homes & Apartments • Ideal for Kids • Ideal for Teens • Washing Machine • Tumble Dryer • Dishwasher • Microwave • Coffee Machine • Hairdryer

## Interior & Grounds



## Location & Local Information

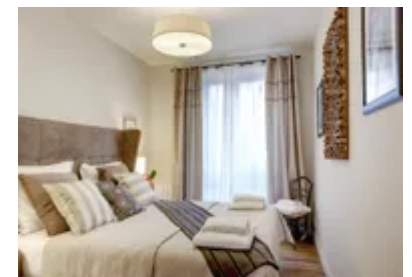
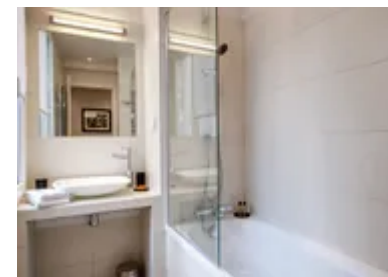
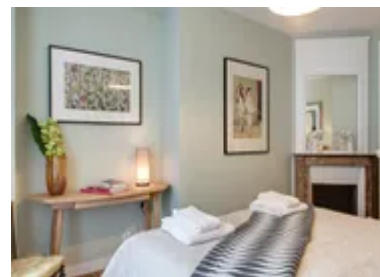
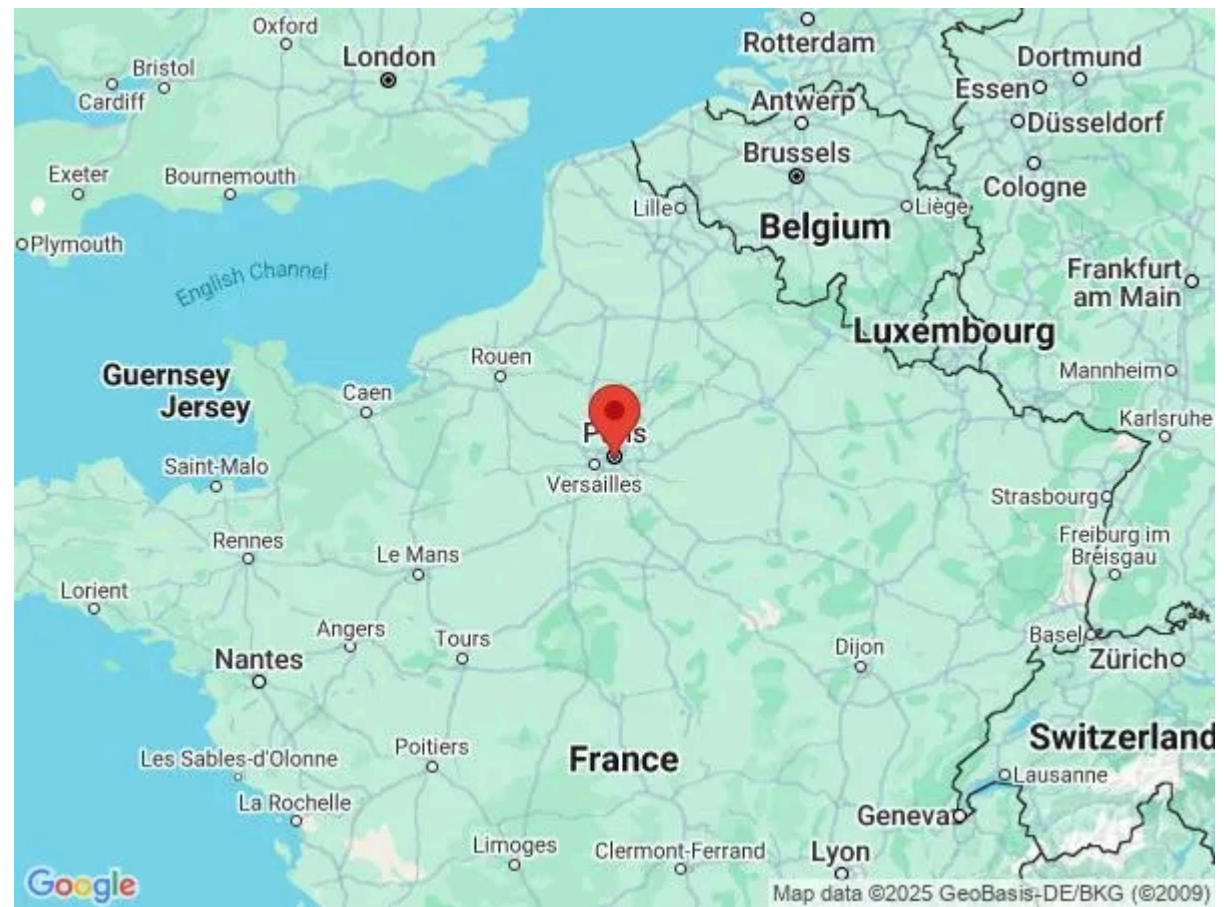
This beautiful apartment is located in a fantastic, dynamic, and trendy area of Paris. Saint-Paul is a historic neighbourhood in the heart of Paris, located on the Right Bank of the Seine River in the 4th arrondissement. It is known for its beautiful architecture, narrow streets, and numerous boutiques and galleries.

The area around Saint-Paul is full of history, with many buildings dating back to the 16th and 17th centuries. The Place des Vosges, a beautiful square surrounded by elegant townhouses, is a highlight of the area. It is one of the oldest and most well-preserved squares in Paris, and it is a popular spot for picnics, concerts, and people-watching.

The streets around Saint-Paul are lined with charming shops and boutiques, selling everything from antique furniture to trendy fashion. The Rue Saint-Antoine is particularly popular for its fashionable boutiques and gourmet food shops. The area also has many art galleries, showcasing the work of both established and up-and-coming artists.

In addition to its shopping and cultural attractions, Saint-Paul is also home to several historic churches and other architectural landmarks. The Church of Saint-Paul-Saint-Louis is a beautiful Baroque church that dates back to the 17th century, while the Hôtel de Sully is a stunning 17th-century mansion that now houses a museum.

Overall, the area around Saint-Paul is a charming and vibrant neighbourhood that offers something for everyone and is a great homebase for exploring all the very best things Paris has to offer. Paris is a city with a rich history, culture, and cuisine, and there is no shortage of things to do on a breakaway in this beautiful city. No trip to Paris is complete without a visit to the iconic Eiffel Tower. You can take the elevator to the top for a breath-taking view of the city or sit underneath with a picnic and a bottle of wine, enjoying the lights.



The Louvre is another place not to be missed, it is one of the largest museums in the world and is home to some of the most famous artworks, including the Mona Lisa. You can spend an afternoon or even a whole day exploring the museum's vast collection!

Local Amenities

Nearest Airport	Paris Charles de Gaulle Airport (28 km)
Nearest Train Station	Chatelet Les Halles (1 km)
Nearest Supermarket	Kioko (20 m)

## What we love

- The carefully chosen artworks on show throughout the apartment add a touch of something special and unique to each room!
- The location of this two-bedroom apartment is brilliant for exploring Paris, with beautiful architecture, narrow streets, numerous boutiques and galleries all on your doorstep!
- The Scandinavian influenced design adds a fresh touch to the more traditional Parisian features

## What you should know...

- This apartment has a homely, unique feel, rather than that of an immaculate new build hotel
- It is located on the first floor of the building
- The second bedroom can be used as a twin or double set up as per your convenience



# Terms & Conditions

- **Security deposit:** €750 to be charged to client's credit card upon arrival and refunded two weeks after departure, subject to full inspection
- **Arrival time:** 17:00
- **Departure time:** 11:00
- **Energy costs included?:** Yes, included in rental price
- **Linen & towels included?:** Yes, included in rental price
- **Pets welcome?:** Not allowed
- **Other Ts and Cs:** A non-refundable 50% deposit is required to confirm the booking (or full payment if booking within 12 weeks of departure).
- **End of stay cleaning available?:** Yes. However, guests are required to leave the accommodation clean, tidy and in the same condition as on their arrival. Any extra cleaning, laundry, maintenance and/or rubbish disposal required will be charged against the security deposit
- **Smoking Allowed?:** Smoking & Vaping are not permitted
- **Insurance:** Guests are required to be in possession of a valid insurance policy, which covers them for cancellations, loss of personal belongings, personal liability and any accidental damage caused during their stay
- **Minimum stay:** 4 nights. All other durations on request
- **Heating costs included?:** Yes, included in rental price
- **Tax:** City tax to be paid on arrival, price to be confirmed
- **Internet access?:** Wi-Fi internet access included