

Apartment Camelia

Region: Portugal Sleeps: 2

Overview

Past and present intertwine at this beautiful apartment in the center of Lisbon. Carefully designed, Apartment Camelia is one of several apartments in this beautifully renovated building, perfect for resting and rejuvenating after a busy day of exploring this vibrant city. This charming building was bought by the Italian toy dealer Biagio Flora at the beginning of the last century and has since been lovingly restored by his great-grandson and architect, Ricardo Flora. The old structure still stands proud, with the ancient master walls and anti-seismic Saint Andrew cross shape maintained in the new design, as well as the old stairs, mural paintings and skylight.

Apartment Camelia offers something special, no plain white walls or generic furnishings, every corner of this one-bedroom apartment has been immaculately designed. Antique tiles, recycled woods and fabulous copper-coloured ceiling lamps fill the lavish living spaces, with plenty of room for a couple to spread out and relax. The walls are dressed with black and white pictures by Rui Palha, a Portuguese photographer, with details of Lisbon as a way to invite you to discover the city and find out more about it. The statement ceiling lamps are designed by Tom Dixon, creating intimate lighting for romantic evenings together. And the furniture is from the renowned Brazilian designer Jader Almeida.

Inside the apartment boasts a well-equipped kitchen, social living and dining area and a chic bedroom. Guests can curl up by the fire, enjoying all the peace and privacy of a private apartment, yet still with the conveniences of a hotel with daily housekeeping and a laundry service should you need it. The bright and airy living space leads out onto a sun trap terrace, with outdoor sofas where you can sit with your morning coffee or chat the evening away with a glass of local Portuguese wine.



Located so central in Lisbon city centre, guests can walk pretty much everywhere with ease, and there are public transport options as well nearby. After days exploring the renowned Time-Out market, eating custard tarts, exploring Torre de Belém and dining at Michelin star restaurants, there is nothing better than returning to your own private apartment for a good-night sleep in the comfortable double bed.

Facilities

Maid Service Included • Wi-Fi/Internet • Air-Con • Laptop Friendly
Workspace • Easy By Train • Cots (Cribs) • City Homes & Apartments •
On-Site Concierge • Breakfast Included • Bathroom Toiletries • Laundry
Service • Ideal for Babies & Toddlers • Ideal for Kids • Ideal for Teens •
Walk to Restaurant • <1hr to Airport • Dishwasher • Microwave • Coffee
Machine • Hairdryer • TV • Working Fireplace/Woodburner • Heating •
Outdoor Pursuit & Activities • Tourist Towns & Villages • Historical Sites

Interior & Grounds

Interior

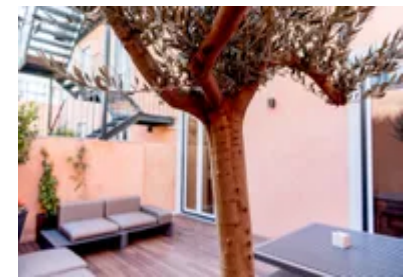
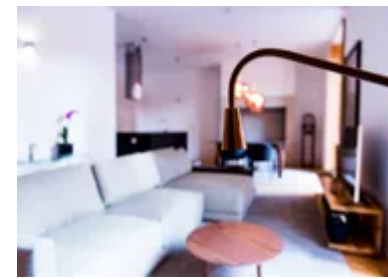
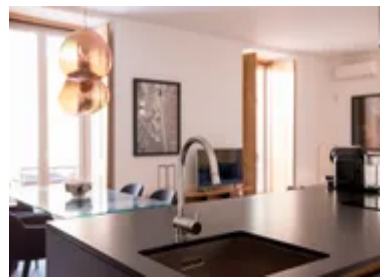
- Spacious open-plan living area with sofas and access to the balcony
- Open plan, well-equipped kitchenette
- Dining area for 4-people
- Bedroom with queen-size bed and desk
- Bathroom

Exterior

- Terrace with outdoor sofas

Additional Facilities

- Air conditioning
- Bioethanol fireplace
- Hair dryer
- Wi-Fi
- Cable TV
- Bluetooth music system
- Iron & board
- Laundry service
- Daily housekeeping



Location & Local Information

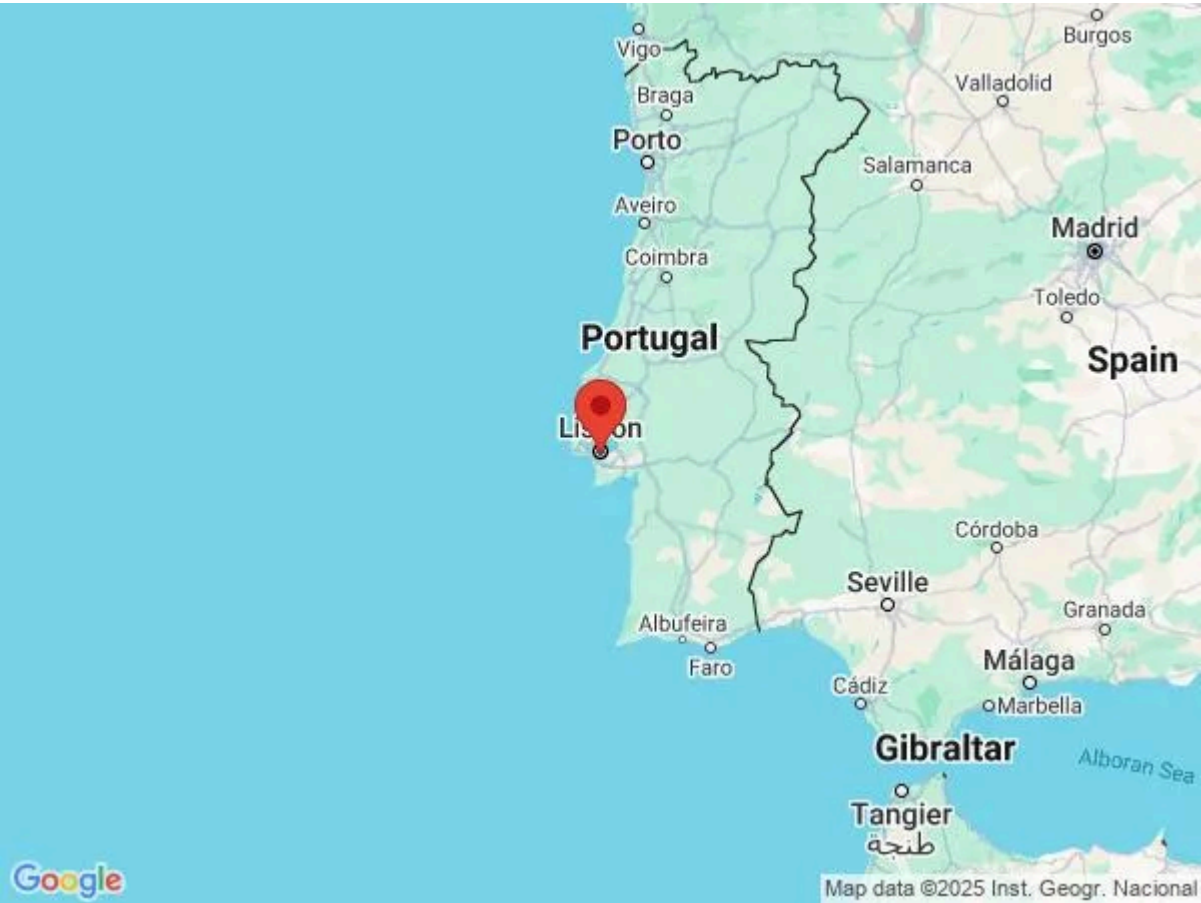
This charming apartment is located within the Flora Chiado Apartments, in an incredible building that is overflowing with charm and character. This charming building was bought by the Italian toy dealer Biagio Flora at the beginning of the last century and has since been lovingly restored by his great-grandson and architect, Ricardo Flora. The old structure still stands proud, with the ancient master walls and anti-seismic Saint Andrew cross shape maintained in the new design, as well as the old stairs, mural paintings and skylight.

Located in the heart of Lisbon's vibrant city centre, this is the perfect base for exploring this incredible city. Being located so central, guests can come and go from the apartment with ease, popping back to get extra things or for a snack as and when you need them. Lisbon offers a vast list of things to do and places to see. The city is known for its vibrant nightlife, with world-class bars and clubs full of locals and tourists alike. The city has a rich history and culture, with monuments to visit, many of which surround the hotel in Belém. For foodies, Lisbon is the place to be. Boasting the renowned Time-Out market, as well as Michelin Star eateries, you can enjoy delicious dishes and celebrate special occasions. The famous Portuguese custard tarts are a must-try during your stay!

On top of the fascinating city, the coast is equally as renowned, drawing surfers from across the world. There are plenty of places to rent boards and wetsuits, as well as surfing schools all along the calmer beaches, perfect for beginners. Even for those who are less keen on surfing, the beaches are a huge draw, with beautifully clear waters and beach bars where you can grab a drink and watch the surfers out to sea.

Local Amenities

Nearest Airport	Lisbon International Airport (10.1 km)
Nearest Train Station	Rossio Train Station (650 meters)



Nearest Train Station	Chiado Tram Stop (160 meters)
Nearest Ferry Port	Cais do Sodre (700 meters)
Nearest Supermarket	Minipreco Express (450 m)

What we love

- Overflowing with charm and character, these apartments have been beautifully renovated with designer furnishings throughout!
- The location is incredible, set in the heart of Lisbon's vibrant city centre, perfect for exploring all that this city has to offer
- Antique tiles, recycled woods and fabulous copper-coloured ceiling lamps make the living spaces feel lavish!

What you should know...

- Accommodation is free of charge for one child under 12 years old in extra bed or cot
- This is a non-smoking building
- No pets are allowed during your stay

Terms & Conditions

- **Security deposit:** Credit card details are required 2 weeks prior to departure for pre-authorisation.
- **Arrival time:** 3 pm
- **Departure time:** 12 pm
- **Energy costs included?:** Yes, included in the rental price.
- **Linen & towels included?:** Yes, included in the rental price.
- **Pets welcome?:** Not allowed.
- **Changeover day:** Flexible.
- **Smoking Allowed?:** Smoking & Vaping are not permitted.
- **Minimum stay:** 1 night.
- **Heating costs included?:** Yes, included in the rental price.
- **Tax:** Lisbon city tax is €4 per person, per night for the first 7 nights. City tax is not included in the rental rate and is payable locally in either cash or card.
- **Internet access?:** Wi-Fi internet access included.