

Apartment Margarida

Region: Lisbon Sleeps: 4

Overview

Apartment Margarida is a two bedroom apartment in the centre of Lisbon. Completely unique, every corner of this charming apartment offers something special. Antique tiles, recycled woods and fabulous copper-coloured ceiling lamps fill the lavish living spaces, with plenty of room for guests to spread out and relax. The walls are dressed with black and white pictures by Rui Palha, a Portuguese photographer, with details of Lisbon as a way to invite you to discover the city and find out more about it. The statement ceiling lamps are designed by Tom Dixon, creating intimate lighting for romantic evenings together. And the furniture is from the renowned Brazilian designer Jader Almeida.

Inside the apartment boasts a well-equipped kitchen, social living and dining area and two chic bedrooms. Both bedrooms have access to the beautiful terrace and one of them is an intimate suite with a magnificent fireplace lined with antique tiles. The terrace is romantic and charming, matching the style of the rest of the building with space for you to sit and dine al-fresco. Guests can enjoy all the peace and privacy of a private apartment, yet still with the conveniences of a hotel with daily housekeeping and a laundry service should you need it.

Past and present intertwine at these beautiful apartments in the center of Lisbon. Carefully designed, Apartment Margarida is one of several apartments in this beautifully renovated building, perfect for resting and rejuvenating after a busy day of exploring this vibrant city. This charming building was bought by the Italian toy dealer Biagio Flora at the beginning of the last century and has since been lovingly restored by his great-grandson and architect, Ricardo Flora. The old structure still stands proud, with the ancient master walls and anti-seismic Saint Andrew cross shape maintained in the new design, as well



as the old stairs, mural paintings and skylight.

Located so central in Lisbon city centre, guests can walk pretty much everywhere with ease, and there are public transport options as well nearby. After days exploring the renowned Time-Out market, eating custard tarts, exploring Torre de Belém and dining at Michelin star restaurants, there is nothing better than returning to your own private apartment for a final glass of local wine and a good-night sleep in the comfortable double beds.

Facilities

City Homes & Apartments • Ideal for Kids • Air-Con • Maid Service Included • Special Offer • Has Discount • Ideal for Teens • Cots (Cribs) • <1hr to Airport • Walk to Restaurant • Wi-Fi/Internet • Easy By Train • Coffee Machine • Outdoor Pursuit & Activities • Hairdryer • Tourist Towns & Villages • TV • Laptop Friendly Workspace • Dishwasher • Microwave • Heating • On-Site Concierge • Breakfast Included • Bathroom Toiletries • Laundry Service • Ideal for Babies & Toddlers

Interior & Grounds

Interior

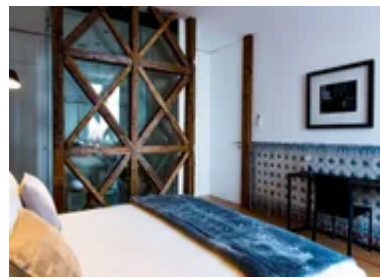
- Spacious open-plan living area with sofas
- Open plan, well-equipped kitchenette
- Dining area for 4-people
- Bedroom suite with queen-size bed, private bathroom and fireplace
- Bedroom with queen-size bed
- Bathroom

Exterior

- Balcony
- Terrace

Additional Facilities

- Air conditioning
- Bioethanol fireplace in the bedroom
- Hair dryer
- Wi-Fi
- Cable TV
- Bluetooth music system
- Iron & board
- Laundry service
- Daily housekeeping



Location & Local Information

This charming apartment is located within the Flora Chiado Apartments, in an incredible building that is overflowing with charm and character. This charming building was bought by the Italian toy dealer Biagio Flora at the beginning of the last century and has since been lovingly restored by his great-grandson and architect, Ricardo Flora. The old structure still stands proud, with the ancient master walls and anti-seismic Saint Andrew cross shape maintained in the new design, as well as the old stairs, mural paintings and skylight.

Located in the heart of Lisbon's vibrant city centre, this is the perfect base for exploring this incredible city. Being located so central, guests can come and go from the apartment with ease, popping back to get extra things or for a snack as and when you need them. Lisbon offers a vast list of things to do and places to see. The city is known for its vibrant nightlife, with world-class bars and clubs full of locals and tourists alike. The city has a rich history and culture, with monuments to visit, many of which surround the hotel in Belém. For foodies, Lisbon is the place to be. Boasting the renowned Time-Out market, as well as Michelin Star eateries, you can enjoy delicious dishes and celebrate special occasions. The famous Portuguese custard tarts are a must-try during your stay!

On top of the fascinating city, the coast is equally as renowned, drawing surfers from across the world. There are plenty of places to rent boards and wetsuits, as well as surfing schools all along the calmer beaches, perfect for beginners. Even for those who are less keen on surfing, the beaches are a huge draw, with beautifully clear waters and beach bars where you can grab a drink and watch the surfers out to sea.

Local Amenities

Nearest Airport	Lisbon International Airport (10.1 km)
Nearest Train Station	Rossio Train Station (650 meters)



Nearest Supermarket	Go Natural (300 meters)
Sightseeing	Santa Justa Lift (350 m)
Sightseeing	Arco da Rua Augusta (650 m)
Sightseeing	Lisbon Cathedral (1 km)

What we love

- Overflowing with charm and character, these apartments have been beautifully renovated with designer furnishings throughout!
- The location is incredible, set in the heart of Lisbon's vibrant city centre, perfect for exploring all that this city has to offer
- Antique tiles, recycled woods and fabulous copper-coloured ceiling lamps make the living spaces feel lavish!

What you should know...

- Accommodation is free of charge for one child under 12 years old in extra bed or cot
- This is a non-smoking building
- No pets are allowed during your stay

Terms & Conditions

- **Security deposit:** Credit card details are required 2 weeks prior to departure for pre-authorisation.
- **Arrival time:** 3 pm
- **Departure time:** 12 pm
- **Energy costs included?:** Yes, included in the rental price.
- **Linen & towels included?:** Yes, included in the rental price.
- **Pets welcome?:** Not allowed.
- **Changeover day:** Flexible.
- **End of stay cleaning:** Standard changeover clean included in the price. Guests are required to leave the accommodation clean, tidy and in the same condition as on their arrival. Any extra cleaning, laundry, maintenance and/or rubbish disposal required will be charged against the security deposit.
- **Smoking Allowed?:** Smoking & Vaping are not permitted.
- **Minimum stay:** 1 night.
- **Heating costs included?:** Yes, included in the rental price.
- **Tax:** Lisbon city tax is €4 per person, per night for the first 7 nights. City tax is not included in the rental rate and is payable locally in either cash or card.
- **Internet access?:** Wi-Fi internet access included.