

River View Regency Suite Lisbon II

Region: Lisbon Sleeps: 4

Overview

Poised in the heart of the Belém district of Lisbon, River View Regency Suite Lisbon II is one of 204 bright and spacious guestrooms and suites within the Hyatt Regency Lisbon. Overlooking the beautiful Tagus River, the property is conveniently located to explore Lisbon's rich history and culture. With an on-site spa and a state-of-the-art gym, as well as access to a rooftop restaurant and bar, a luxury shopping area, meeting rooms and parking facilities, you have everything you could need at your fingertips!

Bright, spacious, and modern, this two-bedroom suite boasts a beautiful view across the Tagus River, best enjoyed from the charming private balcony. The entire suite is beautifully decorated, combining natural materials with sleek white finishes and contemporary artworks in the décor. The room incorporates the latest technology and amenities, so relaxation is easy. The suite boasts a separate living room with a dining area and a fully equipped kitchenette. A relaxing balcony offers guests private time in the sun and the perfect spot for a morning coffee and planning session for another day of exploration.

The Hyatt Regency Lisbon offers a series of one, two and three bedrooms and suites from which you can enjoy the magic of Lisbon. After exploring the renowned Time-Out market, eating custard tarts, exploring Torre de Belém and dining at Michelin-star restaurants, there is nothing better than indulging in the hotel's spa and a good night's sleep in the comfortable double bed.

Facilities



Air-Con • City Homes & Apartments • Boat Trips • Tennis Nearby • Historical Sites • Walking/Hiking Paths • Walk to Village • Romantic • Ideal for Kids • Wine Tasting • Cots (Cribs) • Wow Factor • Ideal for Teens • Beach Nearby • All Bedrooms En-Suite • Wheelchair Access • Shared Pool • <1hr to Airport • Walk to Restaurant • Wi-Fi/Internet • Easy By Train • Washing Machine • Coffee Machine • Outdoor Pursuit & Activities • Hairdryer • Spa/Massage • Tourist Towns & Villages • TV • Gym/Fitness Room • Microwave • Safety Deposit Box • Smart TV • Sauna/Steam • Heating • Ideal for Babies & Toddlers

Interior & Grounds

The Suite

Fully equipped, one-bedroom suite, offering all the space and amenities for up to five adults. These units are perfect for couples or young families, looking to enjoy the city, with all the added hotel facilities to come back to.

Interior Grounds

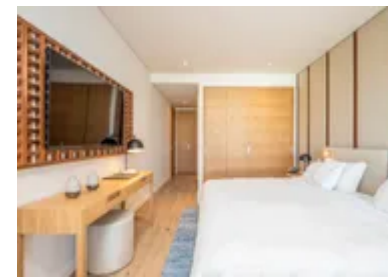
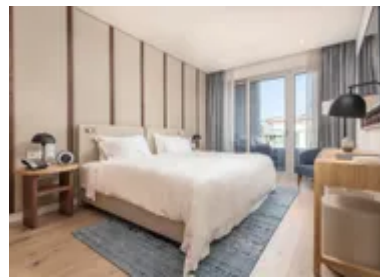
- Spacious open-plan living area with sofas and access to the balcony
- Open plan, well-equipped kitchenette
- Dining area
- Bedroom with queen-size bed and en-suite bathroom
- Bedroom with twin beds

Exterior Grounds

- Balcony

Additional Facilities

- Wi-Fi
- Individually controlled heat and air conditioning
- Iron and ironing board
- Cot upon request
- Lavazza Coffee Machine
- Luggage rack
- Luxury bath amenities
- Safety Deposit Box
- Access to all Hyatt Regency Lisbon facilities and services



Location & Local Information

This contemporary suite is located within the Hyatt Regency Lisbon, in the heart of the Belém district of Lisbon. You can enjoy all the peace and privacy of your own private, fully equipped suite, yet with all the hotel amenities on your doorstep. The Hyatt boasts 204 modern, spacious, and fully furnished guestrooms and suites, each with a balcony overlooking the picturesque Tagus River.

The Hyatt Regency Lisbon has so much to offer its guests. For more active relaxation, a state-of-the-art gym offers personalised health and wellness programs. After a gym session or a long day walking around Lisbon, the on-site spa offers the perfect respite. Managed by one of Europe's top wellness brands, Serenity, any lasting worries will soon melt away! Guests also have access to a rooftop restaurant, bar, luxury shopping area, meeting rooms, and parking facilities.

When you eventually draw yourselves away from the hotel indulgences, Lisbon offers many things to do and places to see. Lisbon is known for its vibrant nightlife, with world-class bars and clubs full of locals and tourists. The city has a rich history and culture, with monuments to visit, many of which surround the hotel in Belém. For foodies, Lisbon is the place to be. Boasting the renowned Time-Out market, as well as Michelin Star eateries, you can enjoy delicious dishes and celebrate special occasions. The famous Portuguese custard tarts are a must-try during your stay!

On top of the fascinating city, the coast is equally renowned, drawing surfers worldwide. There are plenty of places to rent boards and wetsuits, as well as surfing schools all along the calmer beaches, perfect for beginners. Even for those less keen on surfing, the beaches are a huge draw, with beautifully clear waters and beach bars where you can grab a drink and watch the surfers out to sea.

Local Amenities



Nearest Airport	Lisbon International Airport (12 km)
Nearest Ferry Port	Cais do Sodré (5 km)
Nearest Train Station	Alcantara-Terra (2 km)
Nearest Supermarket	Aquarela (750 m)

What we love

- Located within the Hyatt Regency Lisbon, guests can enjoy all the peace and privacy of their private suite, yet with all the hotel amenities on their doorstep!
- Situated in one of the most desirable locations in Lisbon, this is the perfect spot for enjoying all the vibrancy this city has to offer
- Contemporary and stylish, with beautiful river views, this fully equipped suite has everything you could need and more, including a spa and state-of-the-art gym

What you should know...

- This suite is part of a hotel; therefore, photos may be slightly different depending on the room/villa availability
- The maximum occupancy for the suite is either five adults, or four adults and two children
- Access to certain parts of the resort will be restricted for some rooms/villas depending on their location
- Please note that the River View Regency Suite Lisbon II consists of a connecting River View Regency Suite and Double Room River View so is available on request only

Terms & Conditions

- **Arrival time:** 3:00 p.m.
- **Departure time:** 12:00 p.m.
- **Energy costs included?:** Yes, included in the rental price
- **Linen & towels included?:** Yes, included in the rental price
- **Pets welcome?:** Not allowed.
- **Changeover day:** Flexible
- **End of stay cleaning:** Standard changeover clean included in the price. Guests are required to leave the accommodation clean, tidy and in the same condition as on their arrival. Any extra cleaning, laundry, maintenance and/or rubbish disposal required will be charged against the security deposit.
- **Smoking Allowed?:** Smoking & Vaping are not permitted
- **Minimum stay:** 1 night
- **Heating costs included?:** Yes, included in the rental price
- **Tax:** €2 per adult per day, for up to €14 per adult to be paid on arrival. Children 12 yrs and below are exempt
- **Internet access?:** Wi-Fi internet access included in rental price