

# Apartment Sara

**Region:** Espace Killy   **Sleeps:** 8

---

## Overview

Located in the centre of Val d'Isere, this luxurious four-bedroom apartment is the perfect place to unwind and indulge while visiting a true winter wonderland. Part of a premium complex, Apartment Sara marries traditional Alpine architecture with contemporary design elements to create an elegant and inviting space.

When you arrive at Apartment Sara, you'll immediately be greeted with a bright, open-plan living area that is both stylish and comfortable. The large lounge features plush modern sofas and armchairs gathered around a wall-mounted flatscreen TV and large windows that open up to reveal a private balcony offering breathtaking views of the surrounding mountains.

The dining area is adjacent to the living room and comfortably seats eight guests around its Scandinavian-style dining table. To its rear, a well-equipped kitchen with modern appliances is perfect for preparing meals for family and friends.

The apartment has four spacious bedrooms, three of which have either a double bed or two twin beds, which can be pushed together to form a double if desired. The fourth bedroom is ideal for children because it features cabin-style bunk beds. Each bedroom is beautifully decorated with luxurious fabrics and linens, bursting with Alpine charm.

While staying at Apartment Sara, you'll find that this apartment has unparalleled access to a range of amenities within the local area. The apartment's location is ideal for skiing enthusiasts, with access to some of the best skiing terrain in the world just steps away from the apartment's door.

When not on the pistes, Val d'Isere is home to a wonderful



range of shops, cafes, and restaurants, while at night, the village comes alive with one of the world's best apres-ski scenes.

## Facilities

Lakes and Mountains • Washing Machine • TV • Coffee Machine •  
Hairdryer • Ideal for Xmas/NY • Self-Catered • Walking/Hiking Paths • Wi-  
Fi/Internet • Skiing • Cots (Cribs) • Walk to Village • Lift • Chalet  
Apartment • Ideal for Kids • Ideal for Teens • Walk to Restaurant • Tumble  
Dryer • Dishwasher • Microwave • Working Fireplace/Woodburner •  
Heating • High Chair(s) • Parking Space • Outstanding Landscapes •  
Outdoor Pursuit & Activities • Tourist Towns & Villages

# Interior & Grounds

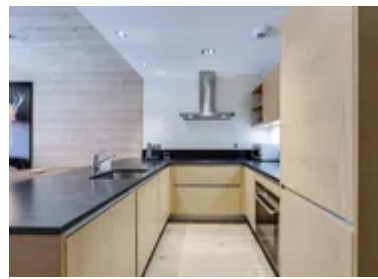
## The Apartment

### *Interior Grounds*

- Living room
- Dining area
- Kitchen equipped with a fridge, hobs, oven, toaster, kettle, and a Nespresso coffee machine
- Terrace
- Bedroom with twin bed (possibility of a double bed, please request) and balcony
- Bedroom with a double bed (separable, please request) and balcony
- Bedroom with a bunk bed (sleeps two, no window)
- Bedroom with two double beds and a terrace
- Two WC's
- Two bathrooms with a bathtub

### **Additional Facilities**

- Wi-Fi
- TV
- Washing machine and dryer
- Vacuum
- Parking space
- Ski locker
- Cot and highchair (please request)
- Fridge
- Kettle
- Toaster
- Induction hobs
- Oven
- Microwave
- Coffee Machine
- Fondue appliances
- Iron
- Blender
- Pancake machine



# Location & Local Information

Apartment Sara benefits from one of the best locations in Val d'Isere, just a short walk away from both the village centre and ski lifts.

To get your holiday started, you'll find that the resort is very easy to get to, no matter how you prefer to travel. If you wish to drive directly to the Apartment Sara, Val d'Isere is well connected by France's road network, and the property offers complimentary parking for guests.

If you wish to shorten your journey with a flight, Geneva and Lyon are the closest major airports, which are three hours away from the resort. Alternatively, you can take the train to Bourg-Saint-Maurice, and then take a bus or taxi up to the resort.

Val d'Isere itself is an idyllic Alpine village that offers a range of winter activities, from skiing and snowboarding to dog sledging and ice skating. With over 300km of pistes on offer, skiers of all levels can enjoy a wide range of runs, including some of the most challenging slopes in the world. Aside from skiing and snow sports, Val d'Isere also offers a wonderful range of après-ski activities, including lively nightclubs and regular live music performances.

Visitors can explore the area's numerous restaurants that offer a range of delicious cuisine from around the world. The town's streets are lined with charming shops selling everything from traditional artworks to designer fashions.

## Local Amenities

|                    |                                  |
|--------------------|----------------------------------|
| Nearest Airport    | Geneva Airport<br>(178 km)       |
| Nearest Village    | Val d'Isere<br>(500 m)           |
| Nearest Restaurant | Restaurant La Baraque<br>(500 m) |
| Nearest Bar/Pub    | Le Hibou<br>(37 m)               |





|                     |   |
|---------------------|---|
| Nearest Supermarket | <b>SPAR</b><br>(350 m)                            |
| Nearest Piste       | <b>Solaise - La Face de Bellegarde</b><br>(500 m) |
| Nearest Ski Lift    | <b>Olympique and Solaise</b><br>(500 m)           |
| Nearest Ski Hire    | <b>Sport 2000</b><br>(45 m)                       |

## What we love

- The apartment's location provides easy access to everything Val d'Isere has to offer, making it perfect for skiers and non-skiers alike
- The views of the surrounding mountains from the apartment's private balcony are truly breathtaking
- Apartment Sara is beautiful inside - its blend of traditional Alpine architecture and contemporary elements creates a luxurious and inviting atmosphere

## What you should know...

- The apartment is located on the upper level of an apartment complex with no elevator, which may not be suitable for guests with mobility issues
- While the apartment is conveniently located in the heart of Val d'Isere, it is also situated on a busy street, so there may be some noise from traffic and pedestrians outside
- Please let us know at the time of booking if you are planning to travel with infants so that the apartment staff can prepare highchairs and baby cots ahead of your arrival

# Terms & Conditions

- **Security deposit:** Secure link sent to the client's email to fill in the details of the client's bank card online 2 weeks before the arrival for the amount of €1,500. Funds won't be taken or blocked on the credit card in this case.
- **Arrival time:** Check-in 5:00 PM
- **Departure time:** Check-out 10:00 AM
- **Energy costs included?:** Yes, included in the rental price
- **Linen & towels included?:** Yes, included in the rental price
- **Pets welcome?:** Not allowed
- **Changeover day:** Saturday
- **End of stay cleaning available?:** Yes. However, guests are required to leave the accommodation clean, tidy and in the same condition as on their arrival. Any extra cleaning, laundry, maintenance and/or rubbish disposal required will be charged against the security deposit
- **Smoking Allowed?:** Smoking & Vaping are not permitted
- **Minimum stay:** 7 nights. All other durations on request
- **Heating costs included?:** Yes, included in the rental price
- **Tax:** French Visitors Tax payable alongside balance (typically costs €1-€5 per adult per night- please enquire if exact amount is required).
- **Internet access?:** Wi-Fi internet access included
- **Property Licence Number:** 73304000608ME