

Apartment Lucienne

Region: Espace Killy Sleeps: 8

Overview

Apartment Lucienne is a luxurious and spacious apartment located in the heart of Val d'Isere, just a short walk away from the resort's famous slopes and village activities. This beautiful apartment can accommodate up to eight guests across four beautifully decorated bedrooms and is perfect for large families or groups of friends looking for a comfortable and convenient place to stay during their next ski holiday.

Upon entering the apartment, you'll immediately be greeted by a warm and welcoming atmosphere with beautiful traditional wooden interiors and modern, stylish decor. The living area features plush, Scandinavian-style furnishings arranged around a cosy fireplace and Apple TV-enabled flat-screen TV, providing the perfect space to relax and unwind after a tiring day on the slopes. Large windows offer stunning views of the surrounding mountains and allow plenty of natural light to flood the room whilst opening up onto a cosy private balcony.

For meals, your kitchen is well-planned and fully equipped with all the modern appliances you'll need to prepare delicious meals for the whole group, while a large dining table with seating for eight is located to its rear, perfect for enjoying meals together with family and friends.

Each of Apartment Lucienne's comfortable bedrooms is decorated in a cosy and elegant style, with comfortable twin or double beds, beautiful views, and a private en-suite bathroom.

One of the main advantages of Apartment Lucienne is its prime location, situated just a few steps away from the ski slopes, allowing guests to easily access the ski lifts and enjoy the fantastic skiing that Val d'Isere has to offer in a matter of minutes. Then, after a day on the slopes or on



days off from skiing, you can also enjoy the many shops, restaurants, and bars in the resort, all of which are located within easy walking distance of the apartment.

Facilities

Bus/Shuttle To Slopes • Wellness • Self-Catered • Skiing • Walking/Hiking Paths • Walk to Village • Ideal for Kids • Ideal for Teens • Special Offer • Has Discount • Cots (Cribs) • All Bedrooms En-Suite • Modern • Walk to Restaurant • Parking Space • Wi-Fi/Internet • Lakes and Mountains • Chalet Apartment • Washing Machine • Outstanding Landscapes • Coffee Machine • Outdoor Pursuit & Activities • Tourist Towns & Villages • TV • Tumble Dryer • Dishwasher • Smart TV • Sauna/Steam • Working Fireplace/Woodburner • Heating • Ideal for Babies & Toddlers • High Chair(s)

Interior & Grounds

The Apartment

Ground Floor

- Bedroom with twin beds (possibility of double), a terrace, and en-suite bathroom with a walk-in shower
- Bedroom with twin beds (possibility of double), a terrace, and en-suite bathroom with a shower
- Bedroom with a twin bed (possibility of double), terrace, and en-suite bathroom with a shower
- WC

First Floor

- Master bedroom with a double bed, sauna, and en-suite bathroom with a shower
- Living room
- Dining room
- Kitchen equipped with a toaster, oven, kettle, hobs, kettle, fridge/freezer, dishwasher, and a Nespresso coffee machine
- Balcony

Additional Facilities

- Fireplace
- TV
- Apple TV
- Wi-Fi
- Ski locker
- Washing machine and dryer
- Parking space (please request)
- Cot and highchair (please request)
- Vacuum
- Fridge
- Freezer
- Kettle
- Toaster
- Induction hobs
- Oven



Location & Local Information

Apartment Lucienne is ideally located right in the heart of Val d'Isere, easily accessible by car, train or plane. The nearest airports are Geneva and Lyon, which are around a three-hour drive away from the property. From the airports, there are regular transfers and shuttle services available to take you directly to Val d'Isere, or you can make arrangements for a private transfer or rent a vehicle to complete the journey. Alternatively, from the airport, you can take a train to nearby Bourg-Saint-Maurice, a charming commune located at the foot of the mountain, which is only 30 minutes away from Val d'Isere.

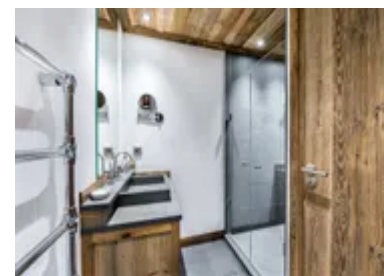
Once in the resort, you'll find the apartment located just a few steps away from the ski slopes and town. This prime location means that guests can easily access the ski lifts and enjoy the excellent skiing and snowboarding that Val d'Isere has to offer across its 300km of pistes.

In addition to skiing, Val d'Isere is also known for its excellent après-ski scene, with many bars, restaurants, and nightclubs to choose from. The resort has a vibrant and lively atmosphere throughout the winter series, and there is always something to do for all ages and tastes.

The resort's centre is just a short walk from the apartment and has a fantastic selection of shops, cafes, and restaurants to explore.

Local Amenities

Nearest Airport	Geneva Airport (177 km)
Nearest Village	Val d'Isere - Proche Centre (500 m)
Nearest Restaurant	Restaurant La Baraque (400 m)
Nearest Bar/Pub	Le B'Bar (160 m)
Nearest Supermarket	Sherpa Supermarché (500 m)



Nearest Piste	Solaise - La Face de Belvedere (500 m)
Nearest Ski Lift	Olympique and Solaise (500 m)
Nearest Ski Hire	Ski Republic (600 m)

What we love

- The spacious and comfortable bedrooms with en-suite bathrooms offer plenty of privacy and relaxation after a day on the slopes, ideal for large groups of friends and families
- With its fireplace and stunning mountain views, Apartment Lucienne's living room provides a warm and inviting atmosphere for relaxing and socialising
- The proximity to both the resort centre and ski slopes is ideal for mixed groups

What you should know...

- As the apartment is located in the heart of town, it may be noisy at times due to its proximity to bars and nightclubs
- Guests should be aware that the apartment is split across two levels with no elevator, which may not be suitable for individuals with mobility issues
- If you are planning to travel with children, please let us know at the time of booking so that the apartment staff can prepare baby cots and highchairs ahead of your arrival

Terms & Conditions

- **Security deposit:** Secure link sent to the client's email to fill in the details of the client's bank card online 2 weeks before the arrival for the amount of €4,000. Funds won't be taken or blocked on the credit card in this case.
- **Arrival time:** Check-in 5:00 PM.
- **Departure time:** Check-out 10:00 AM.
- **Energy costs included?:** Yes, included in the rental price
- **Linen & towels included?:** Yes, included in the rental price
- **Pets welcome?:** Not allowed
- **Changeover day:** Saturday
- **End of stay cleaning:** Standard changeover clean included in the price. Guests are required to leave the accommodation clean, tidy and in the same condition as on their arrival. Any extra cleaning, laundry, maintenance and/or rubbish disposal required will be charged against the security deposit.
- **Smoking Allowed?:** Smoking & Vaping are not permitted
- **Minimum stay:** 7 nights. All other durations on request
- **Heating costs included?:** Yes, included in the rental price
- **Tax:** French Visitors Tax payable alongside balance (typically costs €1-€5 per adult per night- please enquire if exact amount is required).
- **Internet access?:** Wi-Fi internet access included