

# Castello Palinuro

**Region:** Veneto **Sleeps:** 10

---

## Overview

Castello Palinuro is an apartment within an enchanting castle which sits amidst vineyards in the rolling Euganean hills. Enveloped by countryside and yet just 13km away from the charming city of Padua, the home is perfectly located for exploring this ancient area of Northern Italy.

The home encompasses a whole wing of a castle which hails from the 13th-century and was added to and remodelled over the centuries. This grand castle is owned by local counts who have been based in this region for more than 1000 years, even playing a role in the founding of the once independent state of Venice. Where better to base yourself for your Italian escape!

Castello Palinuro can sleep ten guests and the spacious apartment is spread over three floors. On the ground floor you will find a living room, dining room and two kitchens, plenty of space for cooking up a delicious meal and dining together with your group.

The five double bedrooms are located on the first and second floors; all of the rooms are beautiful spaces which are bright and welcoming with walls lined with art work. The rooms are served by four well-appointed bathrooms, one of which boasts a bathtub for a long evening soak. When you wish to come together as a group, there are two large living rooms with lots of comfy sofas and armchairs as well as the smaller sitting room and dining space.

When the weather is fine, you are sure to want to spend as much time as possible outdoors in the vast landscaped grounds of the castle. With lawned areas, fragrant shrubbery and tall shady trees dotted around the garden, this is a serene oasis where you can relax with a good book or enjoy lunch with a view of the surrounding vineyards. Guests can also cool off with a dip in the pool which has a whirlpool area.

Guests staying at Castello Palinuro are able to tour the on-site vineyards, sample the wines produced here and pay visits to the neighbouring golf estate. When you wish to dine out in the evenings, there are two restaurants at the golf estate and the village of Selvazzano Dentro, which is 2km away, has a good range of shops and eateries.

For a wider selection of artisan shops, restaurants and fascinating historical sites, you are well placed for visiting Padua, which is just 13km away and was founded by the Trojans in 1200BC, making it older than Rome.

Another must-visit location is the incredible city of Venice which is scattered over 118 different islands and connected by a system of canals. These waterways lead out to the nearby sea where those who enjoy a lazy day at the beach can explore the coastline. The nearest beach is Sottomarina Beach which is 58km away from Castello Palinuro.



## Facilities

Golf Nearby • Historical Sites • Walk to Village • Tennis Nearby • Cycling  
• Boat Trips • Ideal for Kids • Wine Tasting • Air-Con • Great Value • Cots  
(Cribs) • Ideal for Teens • Townhouse/Apartment • Shared Pool • <1hr to  
Airport • Walk to Restaurant • Wi-Fi/Internet • Coffee Machine •  
Outstanding Landscapes • Outdoor Pursuit & Activities • Tourist Towns &  
Villages • TV • Ideal for Babies & Toddlers • High Chair(s)

# Interior & Grounds

## Villa Interior

### Ground Floor

- Sitting room
- Dining room with large dining table plus a small kitchen
- Fully-fitted kitchen with oven, hob, fridge freezer, dishwasher, microwave, toaster and Moka pot
- Guest WC

### First Floor

- 2 x living rooms with sofas and armchairs
- Bedroom with double bed
- Bathroom with bath, shower, sink and WC

### Second Floor

- 4 x bedrooms with double beds
- 3 x bathrooms with showers, sinks and WCs

## Outside Grounds

- Swimming pool (16m x 8m, max.depth: 1.5m) fenced and gated. Open approximately mid-May to mid-September
- Extensive grounds set in vineyards
- Lawns, trees and floral borders
- Shaded dining table
- Poolside sun loungers
- Outdoor shower
- Parking spaces

## Facilities

- Wi-Fi
- Air-conditioning (in bedrooms only)
- TV
- Washing machine
- Iron and ironing board
- Hairdryers



# Location & Local Information

Northern Italy's Veneto region is a wonderful place to spend a holiday; here you can discover the beautiful landscape on walks and bike rides, visit vineyards to sample local wines and spend your days exploring incredible towns and cities such as Verona, Padua and Venice.

When you wish to get out and enjoy the natural landscape, you can simply head in to the grounds and vineyards around Castello Palinuro. The castle is set within a vineyard where you can take part in a tour or sample wines at the castle wine shop. Just next door to the home, there is also a vast golf estate which boasts a 27-hole golf course, a gym, a large pool and impressive grounds.

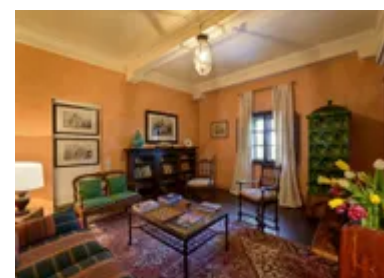
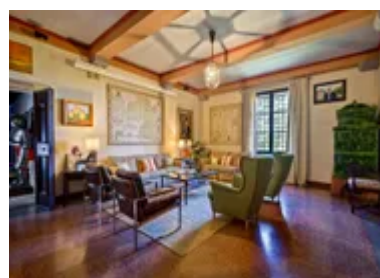
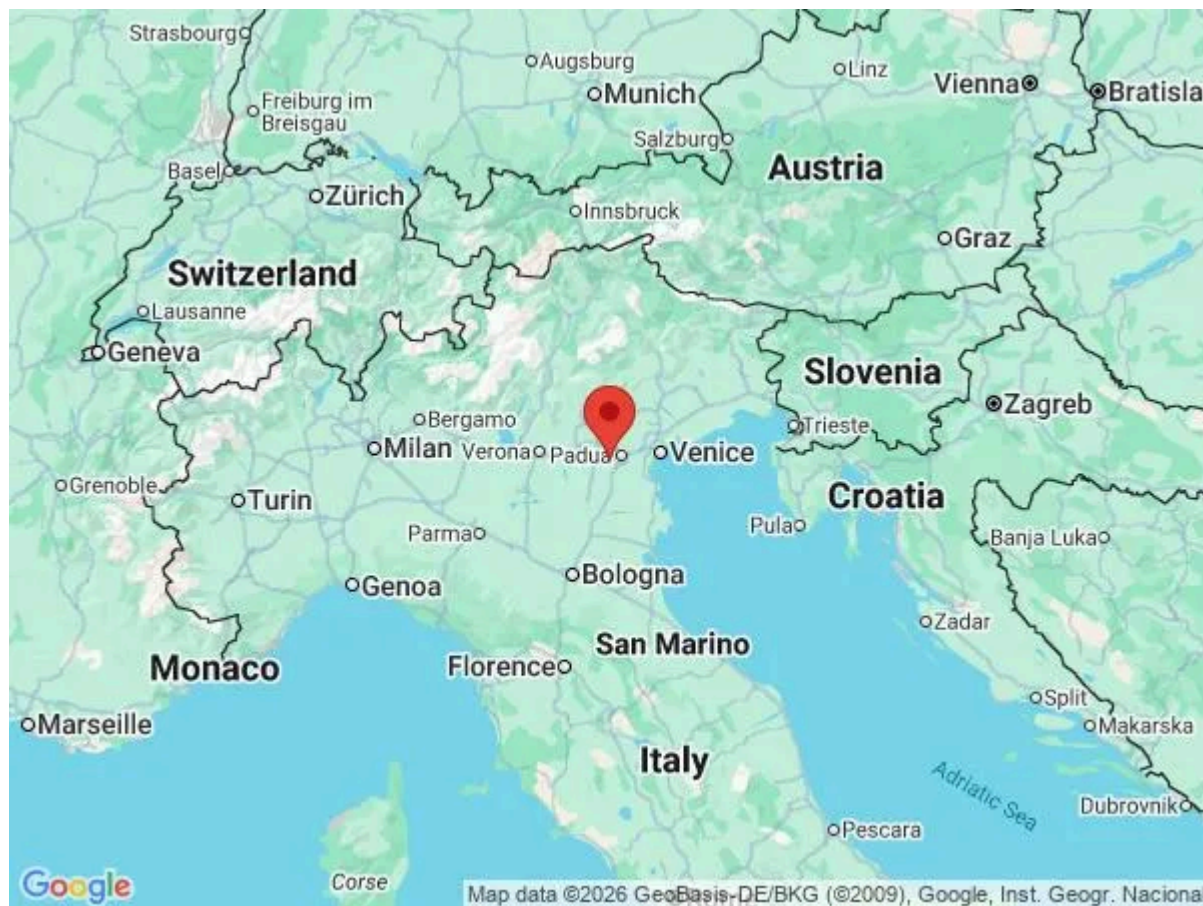
After spending the day playing golf or unwinding in the spa, you can stay for dinner in one of the two restaurants on-site. One offers fine-dining in elegant surroundings and the other is less-formal and offers breakfasts and light bites.

If you need to pick up some fresh bread and milk or would like to dine out for lunch, you can find the closest amenities in the village of Selvazzano Dentro, which is only km from the castle.

There are many more restaurants and shops in Padua too, which is set 13km away and is a lovely place to visit. It has a long and rich history which spans more than 3000 years. As you wander the picturesque streets you can see Roman monuments, incredible Renaissance frescoes, covered arcades, medieval walls and beautiful buildings. A great place to start is Prato della Valle, a square filled with fountains and statues from which you can opt to walk in to the labyrinth like old town or head over to the more modern area filled with bustling markets and boutique shops.

There is plenty to see and do in Padua so you may want to visit more than once to explore some of the religious buildings such as the stunning 14th-century Basilica of St Anthony or museums such as the Civic Museum. There are also dozens of museums and galleries to choose from so you are sure to find one to suit your interests, whether you want to learn more about local history or see frescoes by Giotto. After a busy day exploring you can immerse yourself in Padua's café culture and pay a visit to Caffè Pedrocchi the cities oldest and best-loved coffee house which was established in 1831.

Though you will be based inland, from Castello Palinuro you are still well-placed to visit the gorgeous coastline and the closest beach, Sottomarina Beach, is 58km away, which will take just an hour to reach by car. The long sandy beach is a great choice for a family day out and offers seasonal beach clubs with sun loungers and parasols as well as changing facilities and a range of restaurants and bars nearby. From here you are also able to embark on boat trips to some of Venice's islands such as Torcello, Burano and Murano, the boat trip with an experienced guide is a fantastic way to see some of Venice if you are short on time.



## Local Amenities

Nearest Airport	<b>Venice Marco Polo Airport (60 km)</b>
Nearest Airport 2	<b>Treviso Airport (65 km)</b>
Nearest Golf	<b>Next door to Castello Palinuro (1 km)</b>
Nearest Restaurant	<b>Selvazzano Dentro (3 km)</b>
Nearest Supermarket	<b>Selvazzano Dentro (3 km)</b>
Nearest Train Station	<b>Padua (14 km)</b>
Nearest Village	<b>Selvazzano Dentro (3 km)</b>

## What we love

- Castello Palinuro is a stunning three-floor apartment housed within a wing of a grand castle
- This medieval castle is owned by local counts from a family which have been in the area for over 1000 years!
- Spend lazy days in the garden which boasts a dining terrace and an inviting swimming pool
- You will be able to pick up groceries or dine out in the village just 3km away
- The oldest city in the North of Italy- Padua - is just 13km from the apartment

## What you should know...

- The home is a three-floor apartment which is set within a private wing of a medieval castle.
- Please note that it is possible to split the apartment into two smaller apartments; one sleeping 4 guests and one sleeping 6 guests. Please enquire for more details.
- Please note that the pool is shared with other guests staying at the castle.
- Please note that air-conditioning is featured in the bedrooms only.
- We recommend that you bring a car in order to visit nearby villages as well as taking trips to Padua, Venice and Verona.

# Terms & Conditions

- **Security deposit:** €250 paid in cash to the owner upon arrival and refunded upon departure, subject to full inspection.
- **Arrival time:** 4.00 p.m. - 7.00 p.m. Late arrivals after 7.00 p.m. will be subject to a €30 charge.
- **Departure time:** 10.00 a.m. Late departures after 10.00 a.m. will be subject to a €30 charge.
- **Energy costs included?:** Yes.
- **Linen & towels included?:** Yes.
- **Pets welcome?:** On request only and with prior agreement with the owner. If accepted, a pet supplement of €30 per pet per week will apply (payable locally).
- **Other Ts and Cs:** Weddings, stag/hen parties and any special events are not allowed.
- **Changeover day:** Saturday in July & August. Flexible during all other periods.
- **End of stay cleaning available?:** Yes. However, guests are required to leave the accommodation clean, tidy and in the same condition as on their arrival. Any extra cleaning, laundry, maintenance and/or rubbish disposal required will be charged against the security deposit.
- **Smoking Allowed?:** No.
- **Minimum stay:** 7 nights (short-breaks may be possible on request outside July & August).
- **Heating costs included?:** Yes.
- **Tax:** Italian Visitors Tax is included.
- **Internet access?:** Wi-Fi internet access included.
- **Pool towels included?:** Yes.
- **Pool opening dates?:** The pool is open approximately mid-May to mid-September. Please note that pool opening dates are subject to local weather conditions and pool maintenance requirements and that cooler months may not be suitable for swimming.