

# Chalet Marais

Region: Espace Killy   Sleeps: 6

## Overview

Perched just beyond the lively heart of Val d'Isère, Chalet Marais offers an inviting alpine escape that's as warm and welcoming as it is well-located. While not ski-in, ski-out, you're only a short, easy stroll from the nursery slopes, lifts and vibrant village centre – making this a savvy pick for skiers of all kinds, from first-timers to seasoned snow lovers.

Inside, Chalet Marais is all traditional Alpine charm with a refined edge. Honey-hued timbers, exposed beams and a roaring fireplace create a homely, laid-back feel, while large windows bathe the living space in light and showcase sweeping mountain views. The open-plan lounge and dining area invites sociable evenings by the fire – fondue bubbling away, glasses clinking and stories of the day's runs (and tumbles) flowing freely. Step onto the balcony for a breath of fresh alpine air or your morning coffee with a view.

Sleeping six across three thoughtfully arranged bedrooms, the chalet is ideal for families or small groups. Two of the bedrooms share a well-appointed bathroom, while the third enjoys its own en-suite for added privacy and convenience.

The fully equipped kitchen makes self-catering a breeze, whether you're whipping up a simple breakfast or preparing a post-ski feast. Prefer to leave the cooking to the pros? Val d'Isère's excellent dining scene is just minutes away, from traditional Savoyard comfort food to elegant French cuisine.

When the lifts wind down and the town lights glow, Chalet Marais offers the perfect retreat – close enough to enjoy the buzz but just far enough to relax in peace. Cosy, characterful and effortlessly comfortable, it's a quietly stylish base for your next mountain break.

## Facilities

Ski-In/Ski-Out • Ski Lift Nearby • Walk To Slopes • Ski Chalet • Self-Catered • Skiing • Walking/Hiking Paths • Walk to Village • Ideal for Kids • Ideal for Teens • Has Discount • Special Offer • Walk to Restaurant • Wi-Fi/Internet • Lakes and Mountains • Rural Location • Outstanding Landscapes • Outdoor Pursuit & Activities • Tourist Towns & Villages • Chalet • Working Fireplace/Woodburner • Heating



# Interior & Grounds

## The Chalet

### *Lower Ground Floor*

- Open plan kitchen and dining area

### *Ground Floor*

- Living room featuring large bay windows overlooking the sunny terrace

### *First Floor*

- Two twins on the first floor which both share a bathroom on the same level

### *Second Floor*

- One double bedroom with its own private bathroom and WC on the second floor

### **Additional Facilities**

- Bed linen with beds made on arrival
- Towels and bathrobes
- Daily cleaning (6 days out of 7) with mid stay towel change
- End of stay clean
- Welcome basket
- Firewood
- Unlimited Wi-Fi access



## Location & Local Information

Chalet Marais is ideally located in the heart of Val d'Isère, a popular Alpine skiing resort, with excellent access to amenities and the wider area should you wish to explore.

Getting to the chalet is straightforward and simple as Val d'Isère is well-served by its transport links. The area is easily accessible by road, with major airports in cities such as Geneva and Lyon, both of which are around a two-and-a-half hours' drive away. The resort is also connected to the French rail network, with regular services to Bourg-Saint-Maurice, which is the nearest train station.

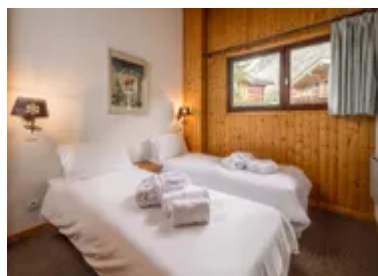
While Val d'Isère is primarily a ski resort, the surrounding area has grown to accommodate a number of popular pastimes. In the village, you'll find a charming atmosphere with a world-class range of restaurants, bars, and shops, as well as a weekly market selling local produce and handicrafts.

You'll also be able to try your hand at a wide variety of activities beyond skiing, such as snowshoeing, cross-country skiing and ice skiing. Or, you can take a break from physical activities and book a relaxing spa experience at one of the resort's many wellness centres.

Val d'Isère comes alive at night with its famous party scene, with a fantastic variety of bars and nightclubs parting well into the night.

### Local Amenities

Nearest Airport	<b>Geneva Airport</b> (174 km)
Nearest Town/City	<b>Val-d'Isère</b> (450 m)
Nearest Restaurant	<b>La Corniche</b> (220 m)
Nearest Bar/Pub	<b>Alex Bar</b> (380 m)



Nearest Supermarket	<b>SPAR (300 m)</b>
Nearest Piste	<b>Savonette (350 m)</b>
Nearest Ski Lift	<b>Savonnette (access to Solaise) (300 m)</b>
Nearest Ski Hire	<b>Skiset (260 m)</b>

---

## What we love

- Chalet Marais is perfectly located just outside of town but also a short walk to the Savonnette lift, helping you get to the main lifts easily.
- With plenty to do in the area, Val d'Isère is a great location for mixed-interest groups
- This property's pricing is based on self-catering, if you would like to book this property on a catered basis please visit Chalet Laney (<https://www.oliverstravels.com/ski/france/espace-killy/val-d-isere/chalet-laney/>)

## What you should know...

- While Chalet Marais is close to the slopes, guests will need to walk a short distance to reach the lifts – easy for most, but worth noting for those with very young children or lots of gear.
- With two of the three bedrooms sharing a bathroom, which is well-appointed but may require a little coordination in the mornings.
- Chalet Marais has stairs between levels, so please take care when going up and down—especially in socks or slippers.

# Terms & Conditions

- **Security deposit:** €2,000 charged to client's credit card by the owner upon arrival and refunded 15 days after departure, subject to full inspection
- **Arrival time:** Check-in 5.00 PM.
- **Departure time:** Check-out 10.00 AM.
- **Energy costs included?:** Yes, included in the rental price
- **Linen & towels included?:** Yes, included in the rental price
- **Pets welcome?:** Not allowed
- **Changeover day:** Saturday
- **End of stay cleaning:** Standard changeover clean included in the price. Guests are required to leave the accommodation clean, tidy and in the same condition as on their arrival. Any extra cleaning, laundry, maintenance and/or rubbish disposal required will be charged against the security deposit.
- **Smoking Allowed?:** Smoking & vaping are not permitted
- **Minimum stay:** 7 nights
- **Heating costs included?:** Yes, included in the rental price
- **Tax:** French Visitors Tax is included in the rental price.
- **Internet access?:** Wi-Fi internet access included