

Sweetpea

Region: The North East **Sleeps:** 10

Overview

Nestled in scenic countryside overlooking the Yorkshire Dales, Sweetpea is a stylish holiday home, ideal for up to ten guests. This beautifully renovated period home blends character and Scandinavian charm, featuring four double bedrooms, two singles, three bathrooms, and inviting living spaces, including a cozy kitchen diner. Enjoy a palette of soft whites, greys, and greens, alongside sumptuously stylish fabrics and decor that nods to Sweetpea's past. The house also welcomes dogs, making it perfect for a complete family getaway.

Set within an expansive Wellness Estate, Sweetpea offers a historic retreat with endless amenities and activities across 3,000 acres of ancient woodland, parkland, and wellness facilities. Here, you can explore walking trails, relax in a luxurious wellbeing center, or enjoy guided forest walks, wild swimming, or unique dining experiences under the stars. Guests can even experience fire ceremonies, moon bathing, or bespoke wellness therapies.

Nearby, the charming market town of Skipton, the gateway to the Yorkshire Dales, offers rich history and vibrant culture with markets, medieval castles, shops, and restaurants. With beautiful landscapes, including the limestone cliffs of Malham Cove and the Leeds-Liverpool Canal, Sweetpea provides the perfect base to unwind and explore.

Facilities

Romantic • Wi-Fi/Internet • Walking/Hiking Paths • Golf Nearby • Historical Sites • Washing Machine • Cycling • Wellness • Ideal for Xmas/NY • Great Value • Rural Location • Walk to Village • Cots (Cribs) • Easy By Train • Gym/Fitness Room • Shared Pool • Games Room • Chef/Cook Available • Cottage • Country Estate • Yoga Classes Available • Catering Available • Breakfast Included • Heated Pool • Indoor Pool • Ideal for Babies & Toddlers • Ideal for Kids • Ideal for Teens • Pets on Request • Walk to Restaurant • <1hr to Airport • Dishwasher • Satellite TV • Sauna/Steam • Heating • High Chair(s) • Parking Space • Outstanding Landscapes • Outdoor Pursuit & Activities • Tourist Towns & Villages



Interior & Grounds

Sweetpea

Ground Floor

- Open-plan kitchen and dining area with orchard views
- Utility room
- Drawing room
- Cosy lounge
- Study
- WC

First Floor

- Bedroom with double bed and ensuite bathroom with shower and WC
- Bedroom with double bed
- Bedroom with double bed
- Bedroom with double bed
- Bedroom with single bed
- Bedroom with single bed
- Family bathroom with bath/shower and WC
- Family bathroom with bath/shower and WC

Lower Ground Floor

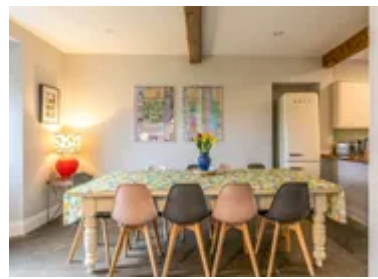
- Games room

Exterior

- Stunning views of the Yorkshire Dales
- Parking space
- 3000 acres

Additional Facilities

- 'hygge' atmosphere with stylish décor
- Stair gate, highchair and travel cot on request
- Dishwasher
- Good quality WiFi
- Satellite TV
- Week day breakfast included
- Wellness facilities (please see 'Extras' tab for more details)
- Outdoor activities (please see 'Extras' tab for more details)



Location & Local Information

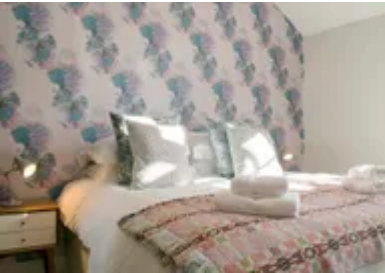
Sweetpea sits on a 3,000-acre estate, just ten minutes from Skipton, the gateway to the Yorkshire Dales. This historic town, with its 900-year-old castle, ancient priory, and cobbled streets, offers a rich tapestry of history, scenic beauty, and attractions, including Skipton Woods and canal cruises. Nearby Bolton Abbey’s Augustinian ruins and riverside walks make for a beautiful escape, with iconic stepping stones and picnic spots along the River Wharfe. For breathtaking views, the Valley of Desolation, Simon’s Seat, and Strid Wood are ideal for nature lovers.

Further afield, the stunning city of Ripon invites visitors to its Gothic cathedral, museums, racecourse, and vibrant marketplace. York, with its medieval walls, historic Minster, Viking Centre, and quaint Shambles, is perfect for cultural exploration, shopping, and dining. Harrogate, a charming Victorian spa town, adds to Yorkshire’s allure with its boutique shops, eateries, and renowned tea rooms, making this region an exceptional escape.

The estate itself provides a luxurious retreat, with scenic walking trails, biking, 4x4 tours, and wild swimming. The Wellness Centre enhances relaxation with a hydro pool, woodland sauna, steam room, yoga, and meditation. Outdoor enthusiasts can enjoy forest therapy, foraging, and curated picnic spots—making Sweetpea a perfect getaway.

Local Amenities

Nearest Airport	Leeds Bradford Airport (37 km)
Nearest Bar/Pub	The Bull (1 km)
Nearest Beach	Morecambe Beach (68 km)
Nearest City	Leeds (62 km)
Nearest Golf	Skipton Golf Club (6.5 km)
Nearest Restaurant	On site (In walking distance)
Nearest Shop	Co-Op, Gargrave (4.5 km)
Nearest Supermarket	Morrisons, Skipton (4.5 km)
Nearest Town	Skipton (6.5 km)



Nearest Train Station	Gargrave Train Station (4 km)
Nearest Village	Broughton (1 km)

What we love

- The interiors of Sweetpea are a dreamy combination of Scandinavian styling together with ancient nods from the past
- The location is less than a ten minute drive from the characterful market town of Skipton, the gateway to the beautiful Yorkshire Dales and less than a mile from the charming village of Broughton
- Guests enjoy wonderful hospitality during their stay and can use the Wellbeing Centre, book trips, activities and catering, which of course come with additional fees.
- The Wellness Centre is open to all estate guests daily between 10 and 12, subject to additional costs. If you would like to book at other times, you can do so subject to availability (please see 'Extras' tab for more details).
- Weekday breakfasts are included with your stay at the on-site Bistro. It is also open for lunch, subject to additional costs (please see 'Extras' tab).

What you should know...

- If you need a little more space and want to enjoy a holiday with another family, there is a large portfolio of holiday homes on the estate which you might be interested in.
- You are welcome to take your furry friend though please be respectful of the furnishings and keep your pet downstairs. Please see T&Cs for more details.
- Please note that the Wellness and Bistro facilities on the estate are shared with guests staying in other properties. However, private activities and experiences can certainly be arranged! Please don't hesitate to enquire.

Terms & Conditions

- **Security deposit:** There is no security deposit required.
- **Arrival time:** Check-in 4.00 p.m onwards.
- **Departure time:** Check-out 10.00 a.m.
- **Energy costs included?:** Yes, included in the rental price.
- **Linen & towels included?:** Yes, included in the rental price.
- **Pets welcome?:** One well-behaved dog may be allowed on request. Please enquire at time of booking. If accepted, there will be an additional charge of £25.
- **Other Ts and Cs:** Highchair & Travel cot available on request.
- **Changeover day:** Flexible
- **End of stay cleaning available?:** Yes. However, guests are required to leave the accommodation clean, tidy and in the same condition as on their arrival. Any extra cleaning, laundry, maintenance and/or rubbish disposal required will be charged against the security deposit.
- **Smoking Allowed?:** No smoking in the property.
- **Minimum stay:** 3 nights
- **Heating costs included?:** Yes, included in the rental price.
- **Internet access?:** Wi-Fi internet access included.