

# Blackberry Lodge

**Region:** The South West   **Sleeps:** 8

---

## Overview

Cornwall certainly captures the imagination. At the very bottom of England, it's an alluring place boasting unbeatable natural beauty. When people think of Cornwall, they think of the traditional Cornish pastie, huge waves, surf boards, fresh fish and a landscape fresh out of fantasy. It's not hard to imagine that giants and elves might have once carved these lands and called them home.

Blackberry Lodge is part of the Retallack Resort situated close to Padstow in Northern Cornwall. Crafted from Cornish stone, the appeal is one of wholesome grandeur, warmth and endurance. Boasting four bedrooms, two ensuite bathrooms and a family wetroom, this is an ideal destination for a family or group of friends. To enter the property, you'll pass quintessentially English rose bushes and enter the huge living space, with views of the water directly from your living room.

The first floor of the property contains bedrooms with en-suites and an open plan living area whilst the ground floor offers two more bedrooms, a vast wet room made of limestone and an open plan kitchen and living area. Outside you'll find your own hot tub and outdoor dining space with BBQ. You can plan evenings barbequing in the great outdoors overlooking the lake with its sightings of kingfishers and nesting birds. It's simply wonderful being out here on a clear night when you can see the stars clearly above you.

Charismatic features include a log burner in the living room which makes for such a cosy feature after days walking on the coast, and of course your own hot tub. The light and airy space creates a homely feel infused with glamour and elegance. It's a great place to meditate, enjoy yoga, watch TV or snuggle up with a book or journal.



You can rustle up your favourite meals in the nautical themed kitchen or, should you prefer it, order dinner to your door! Upon arrival, you'll also be gifted a hamper of Cornish goods including biscuits, cake, coffee and tea.

As far as the bedrooms are concerned, comfort is king. You'll be sleeping on 1500 pocket sprung beds, dressed with delicate Egyptian cotton linen, plush feather duvets, and soft feather pillows. Hypoallergenic pillows are also available. You'll also have your own snuggly soft dressing gowns ideal for nights out in the hot tub under the stars. Let Blackberry Lodge spirit you away to a haven of rest and relaxation which you can enjoy with your most cherished people.

## Facilities

Villa • Wellness • Ideal for Xmas/NY • Walk to Village • Romantic • Ideal for Kids • Surfing • Ideal for Parties • Special Offer • Ideal for Teens • Cots (Cribs) • Heated Pool • Has Discount • Pets on Request • Indoor Pool • Ground Floor Bed & Bath • Shared Pool • <1hr to Airport • Wheelchair Access • Parking Space • Wi-Fi/Internet • Waterfront • Rural Location • Washing Machine • Coffee Machine • Outdoor Pursuit & Activities • Hairdryer • Tourist Towns & Villages • TV • Laptop Friendly Workspace • Gym/Fitness Room • Hot Tub • Tumble Dryer • Dishwasher • Microwave • Sauna/Steam • Working Fireplace/Woodburner • Heating • Kid-friendly excursions • Water excursions/Boat trips • Water park • Ideal for Babies & Toddlers • Plastic crockery • Baby bath • Changing mat • Potty • High Chair(s)

# Interior & Grounds

## *Facilities:*

### *Ground Floor:*

- Lounge with sofas for 4-6 and Smart TV
- Open plan kitchen and dining area with dinning table, granite worktops, extensive kitchenware, Nespresso machine, microwave, full size fridge-freezer and dishwasher
- Ground Floor wet room bathroom with shower, twin basins and WC
- Bedroom with double bed
- Bedroom with twin beds

### *First Floor:*

- Master bedroom with superking size bed and ensuite bathroom with shower and WC
- Bedroom with twin beds and ensuite bathrom with bath, shower and WC
- Lounge with sofas for 6-8 with smart TV, log burner and balcony access
- Laptop friendly work space

*\* twin rooms available to be made up as doubles for a small charge*

### *Outdoor:*

- Terrace with barbeque, outdoor dining table and hot tub
- Private parking

### *Ammenity collection*

- Access to shared indoor swimming pool, sauna and gym
- Bathrobes, toiletries, hairdryers
- Kitchen pack with fairy liquid, dishwasher tablets, bin bags
- Loo rolls
- Utility room with washer, dryer, iron, ironing board
- Baby equipment pack - cot, baby bath, changing mat, potty, training seat, toddler plastic plates and bowls
- Free private parking
- WIFI internet
- Complimentary welcome basket with Cornish Produce



## Location & Local Information

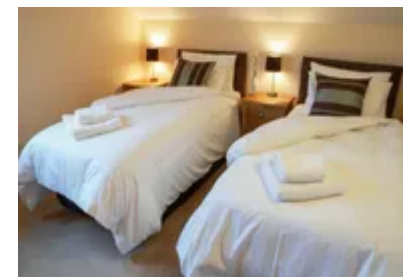
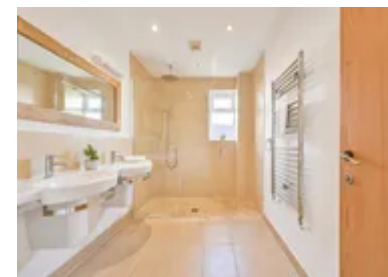
You'll be staying in Blackberry Lodge, not far from Padstow in Northern Cornwall, located in the very south of England. The lodge forms part of the Retallack Resort which grants you access to plenty of frivolous fun including gym access, swims in the heated pool, opportunities to try your hand at surfing, use of the Elemis spa and food at the LookOut restaurant. It would be all too easy to spend all your time at the resort, and if you wish to, you certainly can.

But beyond the resort lies Cornwall, a world of rugged ethereal beauty, seemingly carved by giants themselves. Cornwall is a captivating place made up of endless sandy beaches, roaring waves that crash into the coastline, meandering moorlands, ancient theatres, the ruins of castles and enchanting villages.

Many come to Cornwall for a taste of the great outdoors, and if you enjoy hiking, cycling, rock climbing, surfing or scuba diving, you've certainly come to the right place. Fiscal Beach in Newquay and Port Isaac are popular surfing destinations should you wish to ride the waves.

Situated close to the town of Padstow, you can enjoy many gastronomical experiences here and wonderful people-watching opportunities at the harbour. If you're a fan of seafood, the fair is fresh and locally sourced. You can have dinner at Rick Stein's restaurant or enjoy lessons at his cooking school, where you can take the time to enjoy making a range of meals including curries and classic seafood dishes.

Padstow itself has a rich history. It started life as a trading port where pilchards, slate, copper and tin were commonly traded with citizens from France and Ireland. The town has a very Medieval appearance and feel which gives you a sense of its trail-blazing history. Although walking, cycling and hiking Cornwall is wonderful, it's also worthwhile to see the area by sea. A boat trip will flaunt the shapely coastline and a sea safari will introduce you to many of the creatures who call Cornwall home, such as whales, dolphins and seals.



If you've brought your bike with you, or are prepared to hire a rental, you can take on the River Camel Trail with its scenic views running alongside the estuary.

If you want to learn more about the history of the area, you can do so for free at the Padstow Museum. Head to the Lobster Hatchery if you want to find out more about the native lobster population and how the locals are protecting them.

There are some beautiful buildings to explore, including Prideaux Place, a grade one listed country house that began life in the Elizabethan era. As well as the ancient beauty of the homestead, you may also be fortunate enough to come across wild deer at the neighbouring deer park.

Cornwall is home to many quaint customs including it's Mayday festivities, known as Obby Oss, where you can enjoy some fascinating pagan celebrations. There are a vast number of bays to explore, some of which are dog friendly. On nice days you can enjoy a swim, snorkel, picnic and wander along the sandy beaches. You might even want to enjoy some fish and chips and embrace the British spirit!

For a fun day out, Canal Creek Adventure Park can't be beaten. Or you could take the car and head out to other areas of Cornwall, such as Newquay with its towering waves, or the cosy village of Port Isaac where Doc Martin was filmed. Head all the way to Lands End, see a show at the outdoor Minnack Theatre, wander the top of Tintagel and take some time out in the capital of Truro. Cornwall is almost a country of its own and certainly won't disappoint.

Local Amenities

Nearest Airport	Cornwall Airport Newquay (10.6 km)
Nearest Train Station	St Columb Road (8.2 km)
Nearest City	Plymouth (77 km)

Nearest Town	<b>St Columb Major (6 km)</b>
Nearest Restaurant	<b>The Lookout Restaurant &amp; Lounge at Retallack (On site)</b>
Nearest Supermarket	<b>The Shop (On site)</b>
Nearest Golf	<b>Treloy Golf Club (11.4 km)</b>
Nearest Beach	<b>Mawgan Porth Beach (11.9 km)</b>

## What we love

- We loved being able to bring our dog with us. Having her there helped us feel we weren't on holiday, but at home
- Surfing on Fiscal Beach under the shadow of the Headland Hotel in Newquay was such a highlight
- We were blessed with beautiful weather and loved eating outside with views of the lake, and cosy evenings in our very own hot tub with a couple of glasses of champagne
- Animal spotting over the lake was such a lovely way to spend the time. We got to see nesting birds, ducks and kingfishers
- Please note that this house is wheelchair friendly. Please ask our team for more details.

## What you should know...

- Make sure that you pack a variety of clothing so that you can be prepared for the variable weather in the region. Depending on the time of year, you'll want to consider different options but we'd recommend a hat, sunglasses, warm socks, thermal layers, a raincoat, wellington boots and sturdy hiking boots. Even in more volatile weather, the intense coastal views are still magnificent and inviting
- As Cornwall is such a popular destination, it's worthwhile to book certain events or experiences ahead of time to ensure that you don't end up disappointed
- Cornwall is a vast region and best accessed by car. If you can bring your own car or rent a vehicle, you'll be able to explore far and wide, from Newquay to Redruth and Bodmin, all the way to Land's End

# Terms & Conditions

- **Security deposit:** £250 to be paid prior to arrival and to be refunded in full subject to a damage inspection on departure.
- **Arrival time:** 16:00 - 23:30
- **Departure time:** 10:00
- **Energy costs included?:** Yes, included in the rental price.
- **Linen & towels included?:** Yes, included in the rental price.
- **Pets welcome?:** A maximum of 4 well-behaved dogs are allowed on request, at an additional cost of £25 per dog. Please keep them off furnishings.
- **Other Ts and Cs:** Guests will enjoy Complimentary access to the resort's heated indoor pool, sauna, steam room and gym. Please note that other resort activities and watersports may be chargeable locally.
- **Changeover day:** Friday or Monday.
- **End of stay cleaning available?:** Yes. However, guests are required to leave the accommodation clean, tidy and in the same condition as on their arrival. Any extra cleaning, laundry, maintenance and/or rubbish disposal required will be charged against the security deposit.
- **Smoking Allowed?:** No smoking.
- **Minimum stay:** Please note that there is a 3-night minimum stay, this may be increased across peak dates.
- **Heating costs included?:** Yes, included in the rental price.
- **Pool heating charge?:** Please note that there is an additional charge for pool heating of £200 per week. Please request at the time of booking.
- **Internet access?:** Wi-Fi internet access included.