

Boden Tower

Region: The North East **Sleeps:** 8

Overview

Boden Tower is an elegant, converted stable which combines original features with modern flourishes and offers a comfortable, stylish self-catering home for eight people. With the benefit of Matfen Hall nearby, guests can enjoy total relaxation with access to its pool and leisure facilities, as well as the option to book golf and dining for an additional cost.

Exposed brick, wood paneled walls, and a striking spiral staircase define the open-plan living space. An expansive glass-fronted area, the living room and dining space is light and airy, featuring stylish neutral sofas, a cosy log burner, and a large eight-seater dining table for enjoying meals with friends and family. A well-equipped kitchen provides everything needed to cater for your group, while the dining options at Matfen Hall offer a tempting alternative for an evening out.

The sleeping accommodation comprises four beautifully appointed en-suite bedrooms, each with either a walk-in shower or a bathtub. A double room with a bath and shower is located on the ground floor, while two further doubles are on the first floor. The fourth bedroom, on an upper level, boasts a striking corner standalone bath in its en-suite. With sweeping courtyard views and contemporary artwork adorning the walls, Boden Tower exudes a calming aesthetic that complements its stunning natural surroundings. WiFi and a Smart TV are included, perfect for cosy nights by the fire, while clear days invite exploration of the picturesque area.

Set amid the rolling hills and breathtaking scenery of Northumberland, the Boden Tower is ideally located for outdoor adventures and historic sightseeing. With Hadrian's Wall and Chester's Roman Fort nearby, as well as the luxurious amenities of Matfen Hall, Boden Tower offers the perfect blend of relaxation and discovery.

Facilities

Fishing • Villa • Coffee Machine • Walking/Hiking Paths • Golf Nearby • Wi-Fi/Internet • Ground Floor Bed & Bath • Spa/Massage • Horse Riding • Historical Sites • Cycling • Ideal for Xmas/NY • Easy By Train • Walk to Village • Rural Location • Great Value • Cots (Cribs) • Laptop Friendly Workspace • Shared Pool • Chef/Cook Available • Gym/Fitness Room • Instagrammable • Modern • Kid-friendly excursions • Pre-Stocked Fridge Available • Spa Treatments Available • Transfers Available • Babysitting Available • Heated Pool • Indoor Pool • Ideal for Babies & Toddlers • Ideal for Kids • Ideal for Teens • Hot Tub • Walk to Restaurant • <1hr to Airport • Microwave • All Bedrooms En-Suite • Smart TV • Working Fireplace/Woodburner • Heating • High Chair(s) • Parking Space • Outstanding Landscapes • Outdoor Pursuit & Activities • Tourist Towns & Villages



Interior & Grounds

Boden Tower

Ground Floor

- Open plan living space with wood burner, eight-seater dining table and well-equipped kitchen
- Double bedrooms with en-suite bathroom with shower, bath and WC

First Floor

- Double bedroom with en-suite bathroom with shower and WC
- Double bedroom with en-suite bathroom with shower, bath and WC

Second Floor

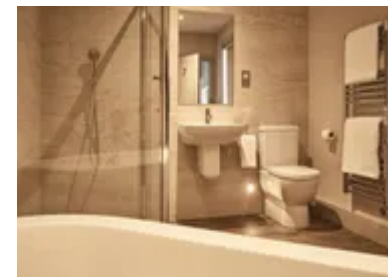
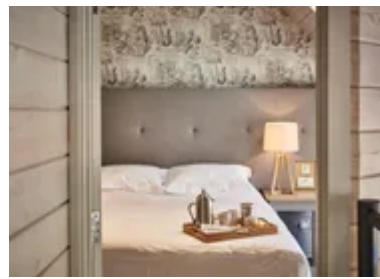
- Double bedroom with en-suite bathroom with standalone bath, shower and WC

Exterior

- Access to the Matfen Hall Hotel
- Access to the hotel amenities and Spa
- Access to hotel swimming pool

Additional Facilities

- WiFi
- Smart TV
- Bed linen included
- Toaster
- Kettle
- Microwave
- Oven
- You Shop, We Drop service – where we can pack away your ordered food prior to arrival.
- Pre-prepared meals available to order
- Babysitting available (book 7 days in advance)
- Chauffeur service available
- Golf excursions available
- Board games
- Cot and highchair available on request



Location & Local Information

In the heart of Northumberland, this striking estate offers the perfect balance between rugged natural beauty and easy access to urban attractions. Newcastle upon Tyne, with its vibrant shops, museums, and eateries, is just a 30-minute drive away, while the countryside location feels a world apart, surrounded by historic landmarks and quaint market towns.

History enthusiasts can explore Chester’s Roman Fort, a well-preserved outpost along Hadrian’s Wall dating back to AD 123, complete with Roman baths, steam rooms, and officers’ quarters. Hexham, a thriving market town, is home to the stunning Hexham Abbey and the Hexham Gaol museum, showcasing archaeology and local history. For a scenic adventure, a walk to Hareshaw Linn’s 9m waterfall leads you through wildlife-rich ancient woodlands, where red squirrels and woodpeckers can be spotted.

Further afield, Alnwick Castle invites guests to wander through courtyards featured in the Harry Potter films, with the enchanting Alnwick Gardens nearby. Golfers will love Matfen Park, a championship course, while other activities such as guided river fishing or tailored hunting trips offer unique experiences. Whether you’re seeking history, nature, or adventure, Northumberland’s rolling hills and captivating landmarks promise unforgettable memories.

Local Amenities

Nearest Airport	Newcastle International Airport (34 km)
Nearest Bar/Pub	The Crown Inn (2 km)
Nearest Beach	Long Sands Beach (52 km)
Nearest City	Newcastle upon Tyne (38 km)
Nearest Golf	Matfen Hall Golf Course (16.5 km)
Nearest Restaurant	The Riverside Kitchen (1 km)
Nearest Shop	Humshaugh Village Shop (2.5 km)
Nearest Supermarket	Tesco Extra, Hexham (9.5 km)
Nearest Town	Hexham (8.5 km)



Nearest Train Station	Hexham Train Station (9 km)
Nearest Village	Walwick (0.5 km)

What we love

- A cosy log burner makes a night in all the more appealing
- Guests staying at Boden Tower and the surrounding properties can take advantage of the nearby Matfen Hall, offering an array of amenities including exceptional dining options, a relaxing spa, a swimming pool, and a scenic golf course
- Just a stone's throw away are some of the most popular historic and ruggedly beautiful Northumberland spots to visit

What you should know...

- Please note that Matfen Hall is a 10-15 minute drive from Boden Tower
- There is a two-night minimum stay
- Young children should be supervised on the spiral staircase and around the log burning fire
- It is advised to book in advance of your stay if you wish to eat at the hotel's restaurants

Terms & Conditions

- **Security deposit:** No security deposit is required for this villa. Please be aware that guests are still required to leave the accommodation clean, tidy and in the same condition as on their arrival.
- **Arrival time:** Check-in 3.00 p.m.
- **Departure time:** Check-out 10.00 a.m.
- **Energy costs included?:** Yes, included in the rental price.
- **Linen & towels included?:** Yes, included in the rental price.
- **Pets welcome?:** Not allowed.
- **Other Ts and Cs:** Use of the indoor pool at Matfen Hall Hotel, also steam room and jacuzzi in pool Area. Spa Treatments available at an additional cost by prior booking. Fully equipped Gym at Matfen Hall.
- **Changeover day:** Monday and Friday.
- **End of stay cleaning available?:** Yes. However, guests are required to leave the accommodation clean, tidy and in the same condition as on their arrival. Any extra cleaning, laundry, maintenance and/or rubbish disposal required will be charged against the security deposit.
- **Smoking Allowed?:** Smoking & Vaping are not permitted.
- **Minimum stay:** 2 nights.
- **Heating costs included?:** Yes, included in the rental price.
- **Internet access?:** Wi-Fi internet access included.
- **Stag & Hen Do Allowed? :** No. Weddings and Celebrations only.