

Juneberry House

Region: The North East Sleeps: 4

Overview

Nestled in the idyllic Northumberland countryside, Juneberry House is a beautifully converted stable that combines rustic charm with modern comfort. This inviting retreat offers warmth and style, featuring a roll-top bath, a striking wood-burning fireplace, and farmhouse-style kitchen cabinets. Perfect for up to four guests, Juneberry House provides a serene escape while granting access to the luxurious amenities of the nearby Matfen Hall Hotel, including a spa, pool, gym, and dining options.

The spacious open-plan living and dining area is the heart of the home, with tartan sofas around the fireplace creating a cosy space to relax after a day of exploration. The fully equipped marble-topped kitchen is ideal for preparing meals, which can be enjoyed around the six-seater dining table. Alternatively, guests can indulge in delicious meals or afternoon teas at the hotel's restaurants.

The ground floor boasts a stunning double bedroom with an en-suite, complete with a walk-in shower and roll-top bath for ultimate relaxation. Upstairs, a second double bedroom with en-suite offers stylish décor, crisp white linens, and complimentary toiletries.

Juneberry House also features thoughtful touches like WiFi, a Smart TV, board games, and beautiful courtyard views. Surrounded by rolling hills and breathtaking landscapes, it's ideally located for exploring local attractions like Hadrian's Wall and Chester's Roman Fort. Whether hiking, golfing, or simply unwinding, Juneberry House promises a tranquil and memorable countryside getaway.

Facilities

Cycling • Villa • Ideal for Xmas/NY • Walking/Hiking Paths • Walk to Village • Romantic • Golf Nearby • Fishing • Historical Sites • Ideal for Kids • Horse Riding • Special Offer • Cots (Cribs) • Chef/Cook Available • Heated Pool • Ideal for Teens • Has Discount • All Bedrooms En-Suite • Indoor Pool • Modern • Ground Floor Bed & Bath • Shared Pool • <1hr to Airport • Walk to Restaurant • Parking Space • Wi-Fi/Internet • Rural Location • Easy By Train • Outstanding Landscapes • Coffee Machine • Outdoor Pursuit & Activities • Spa/Massage • Tourist Towns & Villages • Gym/Fitness Room • Microwave • Smart TV • Working Fireplace/Woodburner • Heating • Kid-friendly excursions • Pre-Stocked Fridge Available • Spa Treatments Available • Transfers Available • Babysitting Available • Ideal for Babies & Toddlers • High Chair(s)



Interior & Grounds

Juneberry House

Ground Floor

- Open plan kitchen, living and dining space with fireplace and six-seater dining table
- WC
- Bedroom with double bed and ensuite bathroom with roll top bath, shower and WC

First Floor

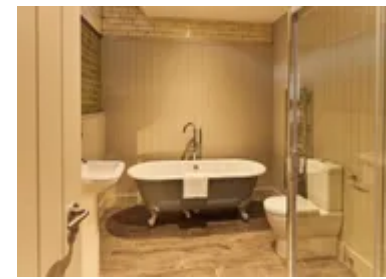
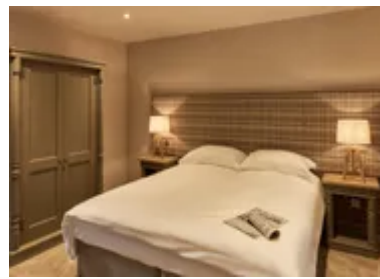
- Bedroom with double bed and ensuite bathroom with bath/shower and WC

Exterior

- Access to the Matfen Hall Hotel
- Access to the hotel amenities and Spa
- Access to hotel swimming pool

Additional Facilities

- WiFi
- Smart TV
- Bed linen included
- Toaster
- Kettle
- Microwave
- Oven
- You Shop, We Drop service – where we can pack away your ordered food prior to arrival.
- Pre-prepared meals available to order
- Babysitting available (book 7 days in advance)
- Chauffeur service available
- Golf excursions available
- Board games
- Cot and highchair available on request



Location & Local Information

Located in the heart of Northumberland, Juneberry House offers the perfect balance of tranquility and adventure. Just half an hour from Newcastle upon Tyne's bustling shops, museums, and restaurants, this countryside retreat feels worlds away, surrounded by rugged landscapes, historic landmarks, and charming market towns.

History enthusiasts will love exploring Chester's Roman Fort along the iconic Hadrian's Wall. Dating back to AD 123, this well-preserved Roman cavalry outpost features baths, a steam room, and officer's quarters set against Northumberland's rolling hills. For a challenge, walk or cycle the wall's 83-mile stretch or join a guided tour to uncover fascinating historical insights.

A short drive takes you to the market town of Hexham, where Hexham Abbey and Hexham Gaol delight visitors of all ages with interactive exhibits and rich stories of the past. For nature lovers, a walk to Hareshaw Linn rewards with a magical 9m waterfall, ancient woodlands, and sightings of red squirrels and woodpeckers.

Further afield, Alnwick Castle beckons with its enchanting courtyards and gardens, famously featured in the Harry Potter films. Adjacent, the Alnwick Gardens boast a cascading water feature, exotic flora, and a treetop restaurant for a truly unique dining experience.

Golfers can enjoy a championship course at Matfen Hall Hotel, where scenic fairways and top-tier facilities ensure a memorable round. Juneberry House places you at the heart of Northumberland's treasures, offering unforgettable days out for all.

Local Amenities

Nearest Airport	Newcastle International Airport (34 km)
Nearest Bar/Pub	The Crown Inn (2 km)
Nearest Beach	Long Sands Beach (52 km)
Nearest City	Newcastle upon Tyne (38 km)
Nearest Golf	Hexham Golf Club (7.8 km)
Nearest Golf	Matfen Hall (17.4 km)
Nearest Restaurant	The Riverside Kitchen (1 km)



Nearest Shop	Humshaugh Village Shop (2.5 km)
Nearest Supermarket	Tesco Extra, Hexham (9.5 km)
Nearest Town	Hexham (8.5 km)
Nearest Train Station	Hexham Train Station (9 km)
Nearest Village	Walwick (0.5 km)

What we love

- Enjoy an indulgent soak in the striking roll top bath
- Relax in front of the wood burning stove with a glass of wine and a good book
- Comfortable bedrooms are thoughtfully decorated in keeping with the surroundings, with tartan headboards and countryside prints on the wallpaper
- Guests staying at Juneberry House and the surrounding properties can take advantage of the nearby Matfen Hall, offering an array of amenities including exceptional dining options, a relaxing spa, a swimming pool, and a scenic golf course
- Just a stone's throw away are some of the most popular historic and ruggedly beautiful Northumberland spots to visit

What you should know...

- There is a two-night minimum stay
- Young children should be supervised around the log burning fire
- Guests are advised to book in advance any hotel services from dining, babysitting to excursions
- Please note that Matfen Hall is a 15 minute drive from Juneberry House

Terms & Conditions

- **Security deposit:** No security deposit is required for this villa. Please be aware that guests are still required to leave the accommodation clean, tidy and in the same condition as on their arrival.
- **Arrival time:** Check-in 3.00 p.m.
- **Departure time:** Check-out 10.00 a.m.
- **Energy costs included?:** Yes, included in the rental price.
- **Linen & towels included?:** Yes, included in the rental price.
- **Pets welcome?:** Not allowed.
- **Other Ts and Cs:** Use of the indoor pool at Matfen Hall Hotel, also steam room and jacuzzi in pool Area. Spa Treatments available at an additional cost by prior booking. Fully equipped Gym at Matfen Hall.
- **Changeover day:** Monday and Friday.
- **End of stay cleaning:** Standard changeover clean included in the price. Guests are required to leave the accommodation clean, tidy and in the same condition as on their arrival. Any extra cleaning, laundry, maintenance and/or rubbish disposal required will be charged against the security deposit.
- **Smoking Allowed?:** Smoking & Vaping are not permitted.
- **Minimum stay:** 2 nights.
- **Heating costs included?:** Yes, included in the rental price.
- **Internet access?:** Wi-Fi internet access included.
- **Stag & Hen Do Allowed? :** No. Weddings and Celebrations only.