

Apartment Pioppo

Region: Italy Sleeps: 4

Overview

Apartment Pioppo, a charming two-bedroom suite on the second floor of a Palazzo overlooking Piazza Santa Croce, is the perfect home base for a memorable stay in Florence. This apartment exudes character and history, with original wood beam ceilings and portions of medieval wall paintings, creating a warm and welcoming atmosphere.

The spacious living and dining room is perfect for relaxing with your family after a long day exploring the city. The fully equipped cooking area opens to the living and dining areas with French windows offering breathtaking views of Piazza Santa Croce. The apartment's decor exudes a classic Florentine elegance that is sure to make you feel right at home.

Apartment Pioppo's facilities are designed to ensure a comfortable and enjoyable stay for families. The master bedroom features a twin convertible queen size bed and en-suite bathroom with a shower, while the second bedroom has a twin convertible queen and an adjacent bathroom with a bathtub and a shower. The fully equipped kitchen area is open to the living room, making it easy for families to prepare meals together.

With thermostatically controlled independent heating and air conditioning, you and your family can stay comfortable all year round. The apartment's location in the heart of Florence also makes it an ideal place to explore the city with kids. The Piazza Santa Croce is only a few steps away and offers an ample open space where children can run and play. The nearby markets and restaurants also offer a range of delicious dining options for families.

In summary, Apartment Pioppo is the perfect place for families seeking a unique and authentic experience in



Florence. Its charming character features, spacious rooms, and central location make it an ideal home base for exploring this beautiful city with your loved ones.

Facilities

City Homes & Apartments • Coffee Machine • Wi-Fi/Internet • Air-Con • Hairdryer • Historical Sites • TV • Romantic • Gym/Fitness Room • DVD • Lift • Cots (Cribs) • Walk to Village • Kid-friendly museum • Kid-friendly excursions • No car required • Ideal for Babies & Toddlers • Ideal for Kids • Ideal for Teens • Walk to Restaurant • <1hr to Airport • All Bedrooms En-Suite • Satellite TV • Heating • Tourist Towns & Villages

Interior & Grounds

The Apartment

Beautifully renovated Palazzo apartment, with 2-bedrooms ideal for up to 4-guests visiting the charming city of Florence.

Interior

- Entrance hallway
- Open plan well equipped kitchen
- Open plan living and dining room
- Master Bedroom: Queen size bed
- Bedroom 2: Queen size bed
- Bathroom 1: Bath
- Bathroom 2: Shower

Additional Facilities

- Air conditioning
- Daily bed-making services
- Cleaning services
- Hairdryer
- Washing machine
- Coffee maker
- Dishwasher
- Wi-Fi



Location & Local Information

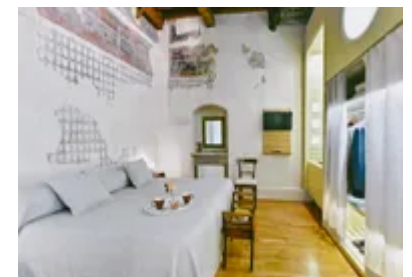
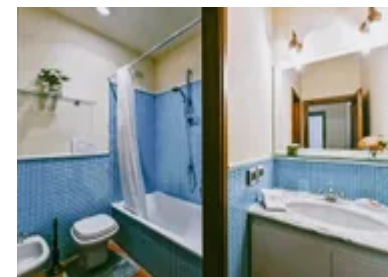
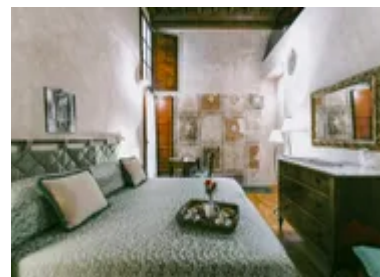
In the heart of Florence's historic centre, Apartment Pioppo is a beautifully restored 16th-century palazzo showcasing the finest Renaissance architecture. Nestled on a tranquil street, this charming apartment is just a stone's throw away from the vibrant energy of the city's main attractions. Upon stepping out of the building, guests will be immediately immersed in the enchanting beauty of Florence, with its cobblestone streets, magnificent architecture, and world-renowned museums.

Guests can easily access some of the city's most iconic landmarks, including the Duomo, Uffizi Gallery, and Ponte Vecchio, as they are all within walking distance. Art and history enthusiasts will be thrilled to explore the numerous cultural sites. At the same time, foodies and souvenir hunters will relish visiting the nearby San Lorenzo Market, home to an array of traditional trattorias, gourmet restaurants, cafes, gelaterias, and bars.

For those who love shopping, the apartment is conveniently located within the fashion district, boasting some of the most exclusive designer stores in the world, such as Gucci, Prada, and Salvatore Ferragamo. The Via Tornabuoni is perfect for indulging in high-end retail therapy, with many luxury boutiques.

Public transportation options are readily available, with bus and tram stops located nearby, making it convenient for guests to venture beyond the city centre. Additionally, Santa Maria Novella, the central train station, is located in close proximity, making it an ideal location for those arriving by train.

In summary, the location of Apartment Pioppo offers an ideal retreat for families, couples, or solo travellers who want to experience Florence's vibrant and rich culture. With its prime location, guests can easily access the city's top attractions, dining options, shopping districts, and transportation links, providing an unforgettable and convenient stay.



Local Amenities

Nearest Airport	Florence Peretola Airport (10 km)
Nearest Train Station	Florence Central Train Station (2 km)
Nearest Supermarket	Conad City (300 m)

What we love

- The apartment is located in a beautifully restored 16th-century palazzo that showcases the finest of Renaissance architecture!
- The apartment is situated in the heart of Florence's historical centre, just steps away from the city's main attractions!
- The apartment is easily accessible by public transportation, with bus and tram stops located nearby

What you should know...

- There is thermostatically controlled independent heating and air conditioning, making the apartment suited to all-year-round travel
- Located 25 steps up from main entrance or 28 down from elevator landing, it will require some stairs to access the apartment

Terms & Conditions

- **Security deposit:** €300 payable ahead of arrival via secure link and refunded two weeks after departure, subject to inspection.
- **Arrival time:** 3.00 p.m.
- **Departure time:** 11.00 a.m.
- **Energy costs included?:** Yes, included in the rental price.
 For any stays over 28 days there may be additional charges. This will be dependent on consumption and payable locally.
- **Linen & towels included?:** Yes, included in the rental price.
- **Pets welcome?:** Not allowed.
- **End of stay cleaning available?:** Yes. However, guests are required to leave the accommodation clean, tidy and in the same condition as on their arrival. Any extra cleaning, laundry, maintenance and/or rubbish disposal required will be charged against the security deposit.
- **Smoking Allowed?:** Smoking & Vaping are not permitted.
- **Heating costs included?:** Yes, included in the rental price.
 For any stays over 28 days there may be additional charges. This will be dependent on consumption and payable locally.
- **Tax:** Florence City Tax is €5.50 per person, per night. A link for payment will be provided to pay by credit card.
- **Internet access?:** Wi-Fi internet access included.