

Villa Esmerelda de Javea

Region: Costa Blanca Sleeps: 8

Overview

Occupying an elevated position within an exclusive residential neighbourhood, Villa Esmerelda de Javea enjoys a peaceful setting with a lovely garden and well-designed interior that opens out to the wonderful surrounding landscape. Located on the hillside above the port of Javea, just a three-minute drive away from the shops, guests here can soak in the stunning views from the inner part of Javea towards the Mediterranean Sea.

Arranged over two levels, the recently rebuilt villa has been finished to a high quality, with beautiful furnishings and evident care given to every detail. A traditional vaulted ceiling runs throughout the ground floor, whilst colourful decor and vibrant stylings give the spaces a unique character. The main living room enjoys plenty of natural light, with large sliding doors that span the front of the room and frame views out to the terrace beyond. A comfortable seating area sits to one end, with stylish sofas and a contemporary fireplace set within the built-in bookshelves. Connected via a large opening, a circular dining table sits in a central area and leads to the modern kitchen at the far end. The kitchen has ample space, with quality fittings and various high-tech equipment to enjoy throughout your stay. There is also a guest bedroom on this level, with a lovely en-suite bathroom, access to the main terrace, and a separate entrance that offers the possibility of additional privacy.

The main terrace can be accessed from both the kitchen and living room, with sliding doors opening out to a lovely shaded patio. A series of comfortable sun loungers sit on a raised terrace, and a couple of steps drop down to a vibrant grass lawn where you can sit beneath the leafy palms and enjoy the villa's peaceful setting. The terrace extends to the front of the kitchen, where you can enjoy a refreshing swim in the heated saltwater pool, and a further



set of loungers are perfect for drying off beneath the warmth of the sun. To the far end of the house, a modern pergola creates a shaded area to relax with a book or play a game of table tennis, and there is also a convenient outdoor shower and impressive sauna to relax in and soak in the views.

The main sleeping area can be found on the upper level, with three spacious bedrooms that have been thoughtfully designed with microcement floors and stylish furnishings. An impressive main bedroom enjoys plenty of light, with a large window framing views across the surrounding landscape. The spacious room features a large double bed and enjoys a beautiful en-suite bathroom with a shower and sitting Japanese bathtub. A second double room also has an ensuite, whilst the third room features twin beds with access to a bathroom across the corridor. There is a shared upper terrace inviting guests to wake up and admire the view, and two wicker armchairs are perfectly positioned to enjoy a quiet coffee in the morning sun.

Facilities

Wellness • Watersports • Canoeing/Kayaking • Walking/Hiking Paths • Historical Sites • Tennis Nearby • Cycling • Sailing • Scuba Diving • TV • Boat Trips • Hairdryer • Wine Tasting • Recommended • Seaview • Coffee Machine • Air-Con • Golf Nearby • Wi-Fi/Internet • Ground Floor Bed & Bath • Villa • Chef/Cook Available • Laptop Friendly Workspace • Table Tennis • Saltwater Pool • Maid Service Included • Beach Nearby • Private Pool • Instagrammable • Modern • Spa Treatments Available • Heated Pool • Ideal for Teens • Walk to Restaurant • Electric Car Charger • Safety Deposit Box • Smart TV • Sauna/Steam • Outdoor Games • Working Fireplace/Woodburner • Heating • Ceiling Fans • Fenced Grounds • Parking Space • Outstanding Landscapes • Outdoor Pursuit & Activities • Tourist Towns & Villages

Interior & Grounds

The Villa

Villa Esmerelda de Javea is a stunning and modern property, beautifully designed by the owner, that sits above Javea where guests can really soak in the views around them.

Ground Floor

- Fully-equipped and modern kitchen with inner window feature and access to the exterior and guest room
- Dining room with circular dining table
- Living room with gas fireplace, Samsung frame TV and Xbox Series X
- Guest room with double bed, en-suite shower, access to the main house and private entrance

First Floor

- Main bedroom with double bed, TV, and en-suite bathroom with shower and Japanese soaking bath
- Bedroom with double bed, desk, wardrobe, TV, en-suite shower, and access to a shared terrace
- Bedroom with twin beds, TV, wardrobe, and access to a shared terrace
- Bathroom with shower

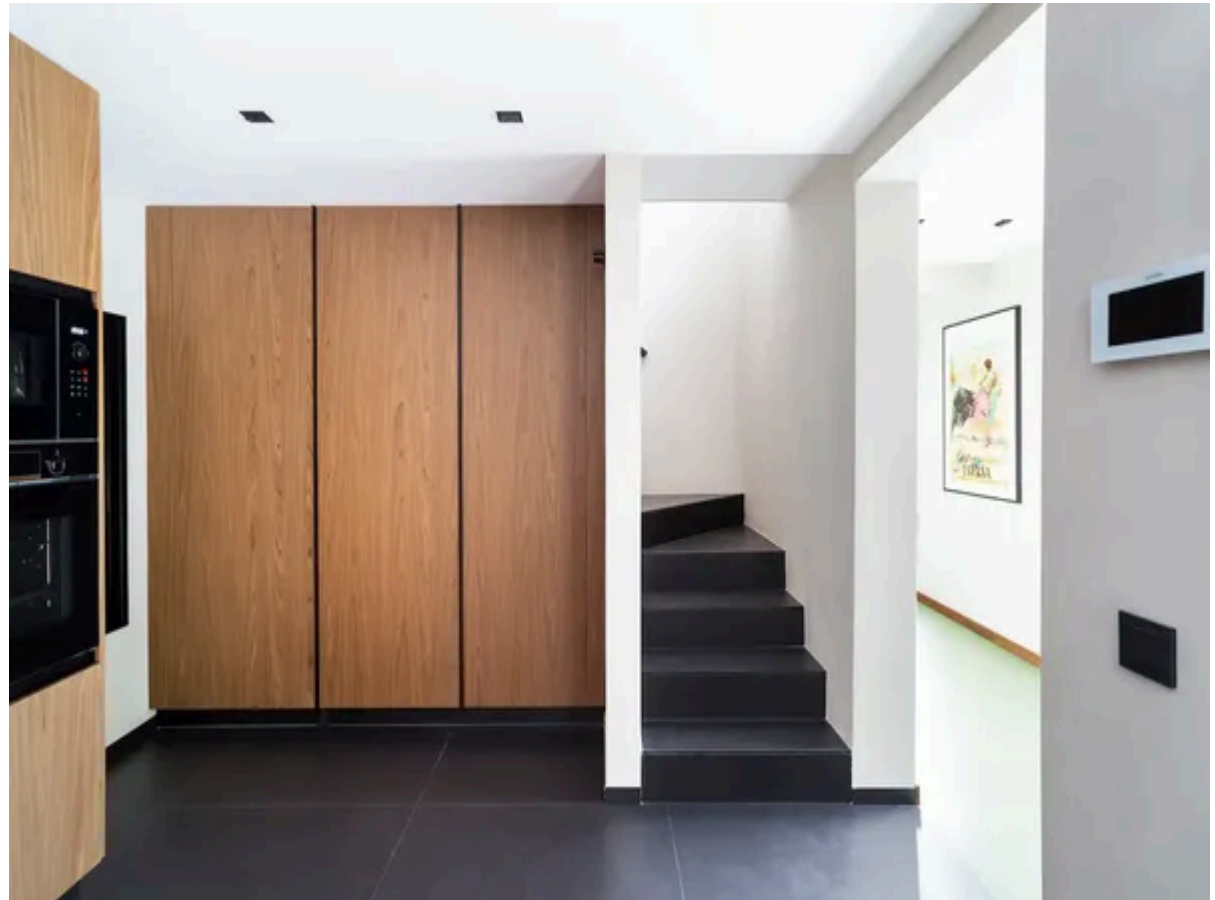
Exterior

- Stairs to property from street level
- Private ventilated garage with EV charging port
- Fenced garden space with outdoor space and incredible views
- Covered terrace with seating
- Heated saltwater pool with surrounding sun loungers
- Outdoor shower
- Private sauna for 6 people
- Staircase to upper section behind the villa with small garden

Additional Facilities

- High speed Wi-Fi
- Air conditioning
- Daily maid service
- Exterior CCTV
- Washing machine
- Tumbler dryer
- Dishwasher
- Room darkening shades
- Fire extinguisher
- First-aid kit
- Reclining massage chair

Tourist License Number: VT-499587-A



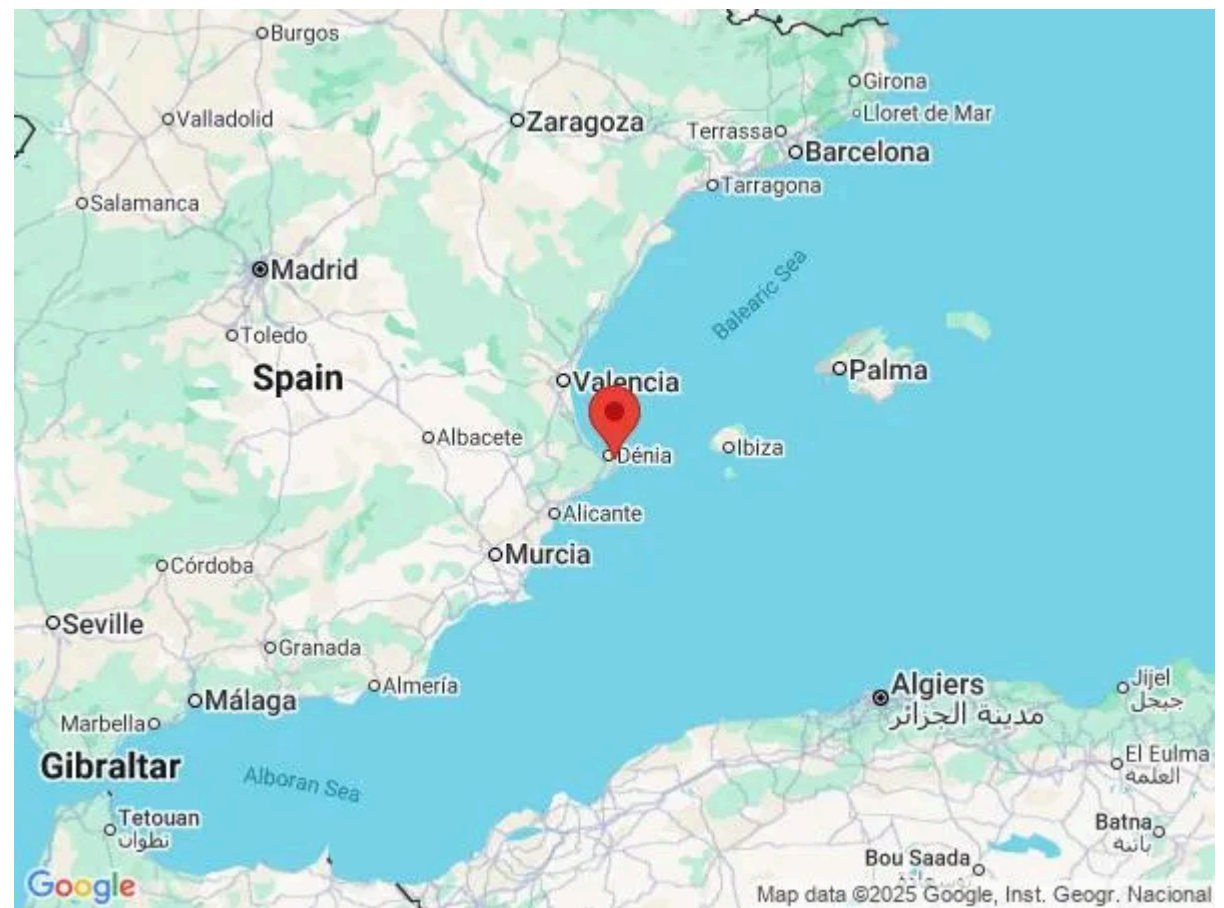
Location & Local Information

Located on the hillside overlooking the bay, Villa Esmerelda de Javea enjoys an elevated perspective whilst being just a short drive from the wonderful Mediterranean coast, making it easy to explore the region's picturesque beaches.

Just behind the villa, the beautiful Parque Natural del Montgo stretches across 2117 hectares, with a diverse landscape rich in wildlife and an assortment of plant species. Reaching a height of 753m above sea level, the area is distinguished by the majestic Montgo mountain shaped like a 'sleeping elephant' (montgo), and there are numerous well-marked trails that invite you to explore, including one into the 'eye' of the elephant. Spend a day in nature and take an easy hike beneath the trees, or challenge yourself to reach the mountain's summit to enjoy spectacular views out to the coast and over the surrounding region.

Just 3 minutes down the hill (some parts of the route may do not have pavements), the Port of Javea has a history dating back to Medieval times. Wander through the old quarter to discover the clusters of whitewashed houses adorned with colourful pots and flowers, and stop at the Church of San Bartolome to admire its impressive gothic-style architecture in the old town. A daily food market is held in the Plaza Celestino Pons, where you can browse the rows of fresh produce displayed on stalls set up within an attractive former monastery. There are a handful of traditional tapas bars perfect for stopping for lunch and sampling a selection of typical plates or head down to the harbour to enjoy some delicious seafood whilst watching the fishing boats bring in their daily catch. Extending along the coast, Javea has a number of beaches, with the central Platja de l'Arenal offering a long stretch of golden sand, making it a popular option for families. Alternatively, head towards the Cap Negre headland and explore the lesser-known coves, such as the picturesque Cala Sardinera or Cala Grandella, which are located nearby.

A wonderful spot for a relaxing afternoon is the



picturesque Cala de Portixol, less than half an hour's drive from the villa. Lined with traditional white and blue 'barracas' (old fisherman's houses), the shell-shaped bay boasts clear blue waters that are perfect for swimming. Grab a snorkel to explore the sea bed, or hire a kayak from the beach and paddle out to the charming Isla del Portixol just beyond the cliffs. Set on the hillside, Cala Clemence is a great option for lunch, where you can enjoy a delicious plate of seafood or sample some traditional Valencian cuisine whilst looking over the bay. There are numerous little inlets dotted along the coast, and you can drive down to the city of Calpe, stopping off at any one of the pretty coves.

Alternatively, head inland to make the most of the region's countryside, or head to the other side of the Montgo mountain to find the wonderful Jardí de l'Albarda. Sitting outside the charming town of Pedreguer, the impressive gardens are just 20 minutes by car. Taking influence from the old Valencian Renaissance gardens, L'Albarda has more than 700 species of indigenous plants, and you can walk around the beautifully-maintained lawns to discover water fountains, decorative pergolas and a number of colourful pavilions built in various architectural styles. On the way back, stop off in Pedreguer itself and walk the older streets, or head to the wonderful Taberna Antigua, where you can enjoy a delicious lunch in the former inn and stables, which dates back three centuries.

Local Amenities

Nearest Airport	Alicante Airport (100 km)
Nearest Airport 2	Valencia Airport (126 km)
Nearest Ferry Port	Port of Javea (2 km)
Nearest Train Station	Gata Tram Stop (12 km)
Nearest Town	Javea (2 km)
Nearest City	Alicante (90 km)

Nearest Restaurant	Sileno Gastrobar (1 km)
Nearest Bar/Pub	Ironia bar (1 km)
Nearest Supermarket	Masymas (2 km)
Nearest Beach	La Grava Beach (2 km)
Nearest Golf	Javea Golf Club (8 km)
Nearest Tennis	Javea Tennis Club (4 km)

What we love

- The beautiful terrace and garden are perfect for soaking up the sun, and various seating areas invite you to make the most of the warm climate
- With its thoughtful design and unique furnishings, Villa Esmerelda de Javea offers a stylish yet inviting home to spend a holiday in this gorgeous part of Spain, with all the amenities you could wish for!
- Whilst positioned within a quiet neighbourhood, it is easy to explore the region's wonderful landscape, with both the national park and coast being a short drive away. Not only that, it's just a twelve-minute walk down the mountain and you're at a Blue Flag swimming beach!
- This property is full of great amenities, including a sauna and reclining massage chair with wireless remote control!

What you should know...

- A car is recommended to explore the surrounding area, and there is a secure ventilated garage with an EV charger on the street level
- The villa is accessed via a steep set of stairs, so it's not recommended for those with mobility issues or young children
- There are no keys for the property and instead the doors are locked/opened with a keycode which is changed for each guest
- Please note that the gardener and pool man may attend to the property during your stay
- The villa is near the beach and restaurants however please note that the route does not have pavements

Terms & Conditions

- **Security deposit:** €1,000 charged to client's credit card before arrival and refunded two weeks after departure, subject to full inspection.
- **Arrival time:** 1 pm.
- **Departure time:** 12 pm.
- **Energy costs included?:** Yes, included in the rental price.
- **Linen & towels included?:** Yes, included in the rental price.
- **Pets welcome?:** Not permitted.
- **Other Ts and Cs:** Please note that children under 12 years old are not permitted in this property.
- **Changeover day:** Flexible.
- **End of stay cleaning available?:** Yes, and a daily maid service (light clean) of 1-2 hours is included in the rental price. However, guests are required to leave the accommodation clean, tidy and in the same condition as on their arrival. Any extra cleaning, laundry, maintenance and/or rubbish disposal required will be charged against the security deposit.
- **Smoking Allowed?:** Smoking & Vaping are not permitted.
- **Minimum stay:** 7 nights. All other durations on request.
- **Heating costs included?:** Yes, included in the rental price.
- **Pool heating charge?:** Pool heating is included in the rental price. (Please request during the booking process)
- **Tax:** Tourist Tax included in the rental price.
- **Internet access?:** Wi-Fi internet access included in the rental price.
- **Pool towels included?:** Yes, included in the rental price.
- **Stag & Hen Do Allowed? :** Weddings, stag/hen parties and any special events are not allowed.