

Fife Castle

Region: Kingdom of Fife **Sleeps:** 34

Overview

Live the life of a Lord in this stunning castle, majestically placed in the Kingdom of Fife, with heated swimming pool, private beach and opulent interiors. Up to 34 guests can come together to celebrate in privacy and style in this magical estate complete with stunning views of the River Tay Estuary.

Home to the Earls of Dundee since the 18th Century, this one-of-a-kind castle is now available to rent as a holiday home. Enjoy an elegant dinner on the chandelier lit dining table, with the crackle of the fireplace behind you and views of the estate outside. Private chefs are available to book to help cater delicious meals for your guests, or you can choose to make use of the wonderful warm country kitchen, which is stocked with all you need to cater from cups of coffees to home-cooked meals.

Enjoy drinks on the elegant terrace, with a welcome bar on arrival, or take your cocktails in the light-filled drawing room. Browse the historic books available in the castle's own well-stocked library, cosying up by the fire with a rare find. If you're looking for a special night of entertainment, the large ballroom provides a prestigious place to host a party, whilst smaller scale, yet lively, evenings can be spent around the grand piano in one of the cosy reception rooms.

Sleep amongst the lavishly designed bedrooms with an excellent choice of rooms. There are plenty of bedrooms to choose from (16 in fact!) set across two floors, ranging from single beds to Super-King rooms, many with en-suite or private bathrooms. For groups with young children an inviting nursery room accommodates up to six little ones for the ultimate sleepover with bunk bed and sofa areas.

Outside, the expansive estate is at your disposal to



explore and discover throughout your stay. Walk amongst the walled gardens and towering ancient trees under huge starry skies. Have a bonfire on your own private beach and look out for the local otters and seals that often can be seen frolicking in the water. With a tennis court, delightful heated swimming pool and glorious terrace it will be hard to tempt your guest back inside of an evening, with such wonderful natural surroundings available throughout your stay.

With the help of the on-site butler, there are many opportunities for excursions and activities from horse-riding to falconry and beyond, to allow you and your party to truly live the high life in the Kingdom of Fife.

Facilities

Ideal for Kids • Bookable For 2027 • Weddings • Ideal for Xmas/NY • Historical Sites • Horse Riding • Walking/Hiking Paths • Romantic • Ideal for Parties • Private Pool • Tennis Court • Golf Nearby • Fishing • Ideal for Teens • Maid Service Available • Special Offer • Has Offer • Chef/Cook Available • Quirky (Unique) • Wow Factor • Walk to Beach • Cots (Cribs) • Instagrammable • Beach Nearby • Parking Space • Wi-Fi/Internet • Rural Location • Washing Machine • Coffee Machine • TV • Pool/Snooker • Indoor Games • Gym/Fitness Room • Dishwasher • Smart TV • Home Cinema • Working Fireplace/Woodburner • Heating • On-Site Concierge • Butler Available • Ideal for Babies & Toddlers • High Chair(s) • Fenced Grounds

Interior & Grounds

Castle Interior

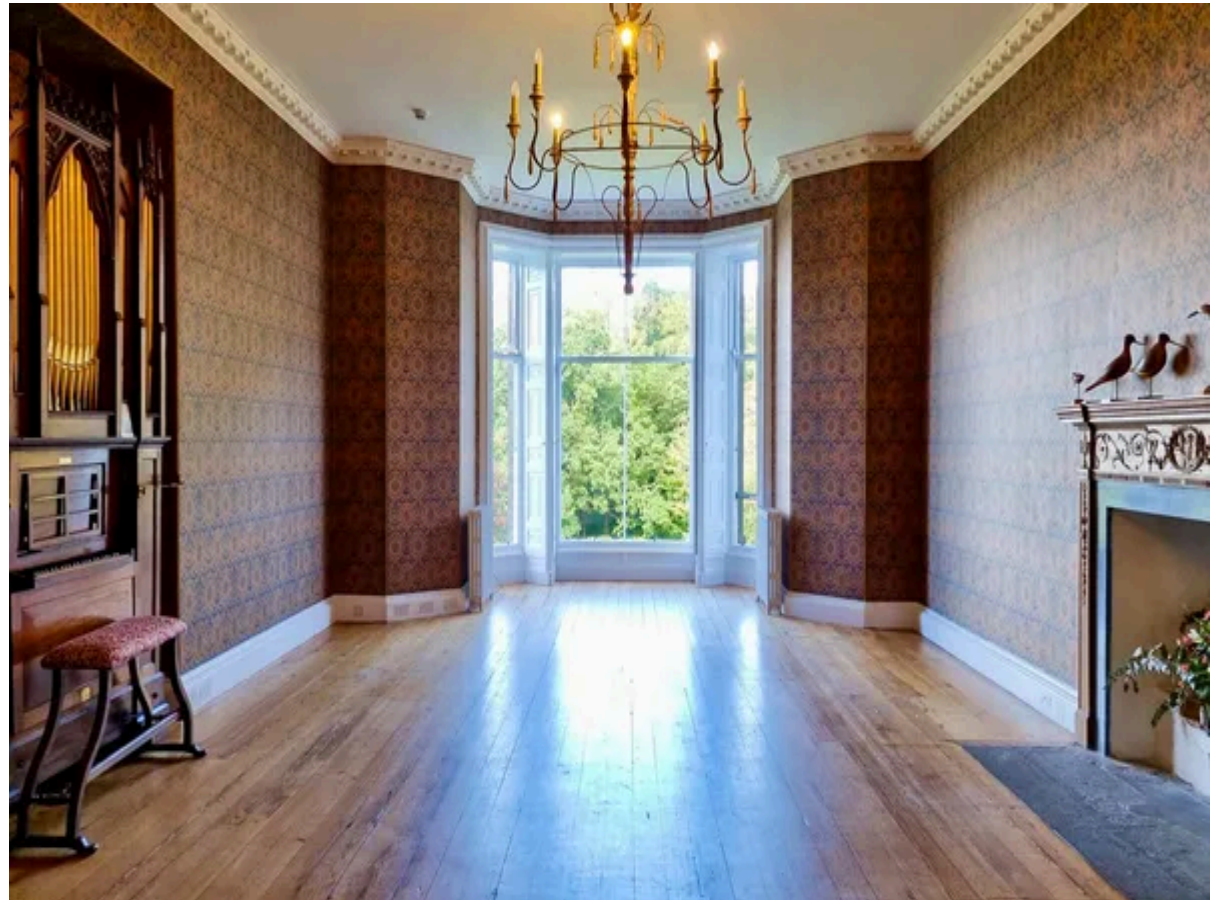
- Large country style kitchen with dishwasher and fridge-freezer
- Dining room with large table, chandeliers and fireplace
- Ballroom
- Library
- Billiards room
- Gym
- Sitting rooms with fireplaces
- Cinema room with Smart TV with Netflix, Sky Sports and Amazon Prime
- Drawing room with welcome bar

Ground Floor Bedrooms (available for staff use on request, subject to an additional cost)

- Juniper room: Bedroom with King bed
- Alder room: Bedroom with twin beds
- Shared shower room for guests in Juniper and Alder rooms

First Floor Bedrooms

- Birch room: North-West facing bedroom with Super-King bed and views over Tay Firth and woodland. En-suite with walk-in shower
- Birch single room: Bedroom with single bed, part of the Birch room suite. Views over Tay Firth and woodland. Shared en-suite with Birch room
- Beech room: West facing bedroom with Super-King bed and views over Tay Firth, farmland and gardens. En-suite with walk-in shower (this was where Prince Philip would stay when visiting)
- Beech single room: Bedroom with single bed, part of the Beech room suite. Views over Tay Firth and gardens. Shared en-suite with Beech room
- Willow room: North facing bedroom with Super-King bed and views over Tay Firth, woodland and gardens. Private bathroom with shower
- Oak bedroom: South facing bedroom with Super-King



bed and views over gardens. Adjoining door to Nursery room. Shared bathroom with Sycamore room with shower

- Nursery room: South facing playroom/bedroom with 2 bunk beds (4 beds), suitable for children only. Each bunk also has a roll out divan bed for 2 extra children. Access to shower room across the hallway
- Sycamore room: South facing bedroom with Queen bed and views over gardens and woodland (tower room). Shared bathroom with Oak room
- Maple room: North facing bedroom with King bed and views over Tay Firth, woodland and gardens. En-suite with freestanding bath and separate shower
- Cedar room: North facing bedroom with King bed and views over Tay Firth, woodland and gardens. Bathroom on mezzanine level across the corridor with shower (not shown on floor plan)
- Hazel room: North facing bedroom with twin beds (can be joined together to make a King bed) with views over Tay Firth. Private bathroom with shower.

Second Floor Bedrooms

- Cherry room: North facing bedroom with views over Tay Firth and woodland. Private bathroom across the hallway with shower
- Rowan room: North facing bedroom with views over Tay Firth. Private bathroom with bath and shower
- Pine room: South facing bedroom with views over gardens and tennis court. Private bathroom with shower across the hallway
- Hawthorn room: South facing bedroom with views over gardens and tennis court. Private bathroom with shower
- Tower room: South facing bedroom with King bed and views over gardens and tennis court. Private bathroom with shower

Outside Grounds

- Heated swimming pool with cover (heated approximately May to September)
- Terrace area with additional outdoor seating
- Private driving range (additional cost)
- Tennis court
- Courtyard

- Barbecue fire pit
- Private beach
- Ancient woodlands
- Walled garden
- Private parking

Additional Facilities

- Wi-Fi
- TVs
- Washing machine
- Rare and historic books in the library
- Croquet

Location & Local Information

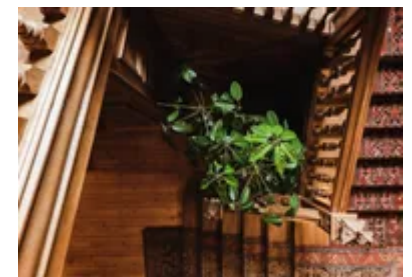
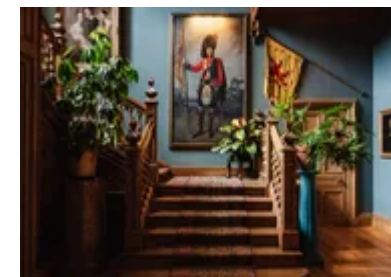
Fife Castle is perfectly placed in the Kingdom of Fife giving easy access to both the Highlands and Lowland of glorious Scotland. Through the House Manger guests can choose from a range of activities on the estate, from fly-fishing in the river, clay pigeon shooting or even trying a tippie or two of Scotland's finest whisky-tasting. Why not arrange a Scottish ceilidh in the ballroom complete with an authentic piper? Or take a horse ride through the woodland trails to really enjoy the grounds in style?

If you can be tempted away from your own grounds, then why not try a round of golf on some of Scotland's most prestigious courses from the Old Course Dumbarnie or Kingsbarns, all within driving distance. If that doesn't satisfy you then a trip to The R&A World Golf museum in St. Andrews, just half an hour drive from the castle, will give golf fans plenty to discover, tracing the game's history back to the 15th Century right through to modern day.

History lovers will be spoilt for choice on places to explore and significant landmarks to visit. A lovely walk we recommend is a two-mile woodland stroll to the south bank of the Tay estuary and the village of Balmerino where you can visit the ruins of an extraordinary Cistercian abbey dating back to 1229. Or if you wish to pack a chef prepared picnic, you can take a trip out to any number of the fantastic castles just a short distance away from the majestic Falkland and Glamis Castle to the red sandstone Scone Palace in Perth.

With the delightful city of Edinburgh just an hour away and Dundee even less, the castle is accessible to the major Scottish points of interest. If you are looking for some culture then head to the Victoria and Albert Museum in Dundee to celebrate historic Scottish design or visit the HMS Discovery, the historic steamship that took Shackleton to Antarctica in 1901.

Local Amenities



Nearest Airport	Edinburgh Airport (76 km)
Nearest Bar/Pub	The View (9.3 km)
Nearest Beach	Private beach (On site)
Nearest City	St Andrews (26.7 km)
Nearest Golf	Links of St Andrews (26 km)
Nearest Restaurant	Cupar (12 km)
Nearest Supermarket	Tesco Superstore (15 km)
Nearest Town	Cupar (14 km)
Nearest Train Station	Cupar Train Station (14 km)

What we love

- Opulent bedrooms offer comfort, style and historic flourishes fit for royalty, complete with en-suites and dressing rooms - the late Prince Philip used to regularly stay at the castle. Fancy sleeping in one of the two tower rooms? There's also a fantastic nursery room for the ultimate kids' sleepover
- Breath-taking grounds include ancient woodlands, a heated swimming pool and tennis courts. There's something for everyone
- Art enthusiasts will appreciate the ever changing selection of artwork displayed throughout the castle
- Enjoy a barbecue around the firepit on your own private beach whilst looking out for local otters and seals in the water
- The location is within easy reach of Scotland's bustling cities, from Edinburgh to Dundee

What you should know...

- Fife Castle can comfortably sleep 30 guests and 4 children (in bunk beds) across 16 bedrooms. A further two children can sleep on roll out divan beds in the Nursery room, and an additional two bedrooms are available for staff (on request, subject to an additional cost).
- For even larger groups, there are also 8 en-suite bedrooms (2 twin bedrooms and 6 King bedrooms) in the stables. Please enquire for pricing if interested.
- Quiet and non-intrusive butler lives on-site in a separate wing, they will be very happy to help.
- Young children should be supervised in the swimming pool and at the private beach. Note that the swimming pool is located in the walled garden, a short walk from the castle.

Terms & Conditions

- **Security deposit:** £2000 paid via bank transfer to the owner one month before arrival and refunded two weeks after departure, subject to full inspection.
- **Arrival time:** 4.00 p.m. There is a £600 early access fee from 12.00 p.m.
- **Departure time:** 10.00 a.m. There is a £300 late access fee which allows guests to leave the castle at 12.00 p.m.
- **Energy costs included?:** Yes.
- **Linen & towels included?:** Yes.
- **Pets welcome?:** Dogs welcome on request only and with prior agreement with the owner.
- **Other Ts and Cs:** A travel cot and high chair are available on request.
- **Changeover day:** Flexible.
- **End of stay cleaning available?:** Yes and morning housekeeping is also included. However, guests are required to leave the accommodation clean, tidy and in the same condition as on their arrival. Any extra cleaning, laundry, maintenance and/or rubbish disposal required will be charged against the security deposit.
- **Smoking Allowed?:** No smoking or vaping.
- **Other 2:** Fife Castle can comfortably sleep 30 guests and 4 children (in bunk beds) across 16 bedrooms. A further two children can sleep on roll out divan beds in the Nursery room, and an additional two bedrooms are available for staff (on request, subject to an additional cost). For even larger groups, there are also 8 en-suite bedrooms (2 twin bedrooms and 6 King bedrooms) in the stables. Please enquire for pricing if interested.
- **Other 3:** Quiet and non-intrusive butler lives on-site in a separate wing, they will be very happy to help.
- **Minimum stay:** 3 nights approximately May to end-September. 2 nights during all other periods.
- **Heating costs included?:** Yes.
- **Pool heating charge?:** Included approximately May to September. Please note that like all heated pools, pool heating and water temperature are reliant on weather and outside temperatures.
- **Internet access?:** Wi-Fi internet access included.
- **Pool towels included?:** Yes.
- **Stag & Hen Do Allowed? :** Weddings, stag/hen parties and any special events are on request only and subject to prior arrangement with the owner and additional charges.

Guests will be required to sign a copy of the owner's rental terms before the arrival.