

# Chalet Laney

**Region:** Espace Killy   **Sleeps:** 6

---

## Overview

Located just outside the main village of Val d'Isère, Chalet Laney is the alpine retreat you didn't know you needed, until now. Ski-in, ski-out? Not quite. But a gentle two-minute amble lands you at the nursery slopes, ski lifts, and buzzing town centre. Whether you're a snow-sure seasoned pro or a hot-chocolate-on-the-balcony kind of skier, this location is hard to beat.

The chalet is all rustic charm, the kind that wraps around you like your cosiest jumper. Expect honey-toned wood, beamed ceilings, and a crackling fireplace that anchors the open-plan living and dining area – perfect for snowy story swapping over fondue and a bottle (or two) of Bordeaux. Large windows frame pine-sprinkled slopes, and there's a balcony where you can catch that crisp mountain air with your morning coffee.

Sleeping up to six across three snug bedrooms, the chalet is made for family escapes or ski trips with friends. Two rooms share a bathroom, and the third comes with its own en-suite – ideal for those who like a little extra space to spread out their ski socks.

The kitchen is fully equipped for everything from croissants and coffee to a slow-simmered tartiflette. Though if you'd rather leave the cooking to someone else, you're in luck: Val d'Isère's restaurants are minutes away, serving everything from hearty Savoyard fare to fine French cuisine.

When the lifts close and the après begins, retreat to the warmth of the chalet – a sanctuary from the buzz of town yet close enough to dip in when the mood strikes. Classic, cosy, and quietly confident, Chalet Laney makes the perfect base for your next alpine adventure.

## Facilities

Lakes and Mountains • Coffee Machine • Ski Chalet • Wi-Fi/Internet • Skiing • Walking/Hiking Paths • Rural Location • Walk to Village • Maid Service Available • Chalet • Pre-Stocked Fridge Available • Transfers Available • Catered • Catered • Ideal for Kids • Ideal for Teens • Walk to Restaurant • Dishwasher • Microwave • Working Fireplace/Woodburner • Heating • Outstanding Landscapes • Outdoor Pursuit & Activities • Tourist Towns & Villages



# Interior & Grounds

## The Chalet

### *Lower Ground Floor*

- Open plan kitchen and dining area

### *Ground Floor*

- Living room featuring large bay windows overlooking the sunny terrace

### *First Floor*

- Two twins on the first floor which both share a bathroom on the same level

### *Second Floor*

- One double bedroom with its own private bathroom and WC on the second floor

## Additional Facilities

- Bed linen with beds made on arrival
- Towels and bathrobes
- Mid stay clean and towel change
- End of stay clean
- Welcome basket
- Firewood
- Unlimited Wi-Fi access



## Location & Local Information

Chalet Laney is ideally located in the heart of Val d'Isère, a popular Alpine skiing resort, with excellent access to amenities and the wider area should you wish to explore.

Getting to the chalet is straightforward and simple as Val d'Isère is well-served by its transport links. The area is easily accessible by road, with major airports in cities such as Geneva and Lyon, both of which are around a two-and-a-half hours' drive away. The resort is also connected to the French rail network, with regular services to Bourg-Saint-Maurice, which is the nearest train station.

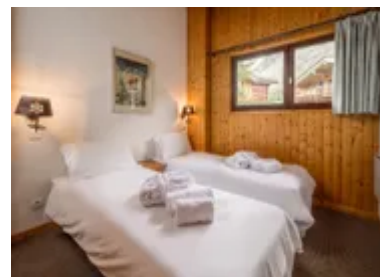
While Val d'Isère is primarily a ski resort, the surrounding area has grown to accommodate a number of popular pastimes. In the village, you'll find a charming atmosphere with a world-class range of restaurants, bars, and shops, as well as a weekly market selling local produce and handicrafts.

You'll also be able to try your hand at a wide variety of activities beyond skiing, such as snowshoeing, cross-country skiing and ice skiing. Or, you can take a break from physical activities and book a relaxing spa experience at one of the resort's many wellness centres.

Val d'Isère comes alive at night with its famous party scene, with a fantastic variety of bars and nightclubs parting well into the night.

## Local Amenities

|                    |                              |
|--------------------|------------------------------|
| Nearest Airport    | Geneva Airport<br>(174km)    |
| Nearest Town/City  | Val-d'Isère Centre<br>(450m) |
| Nearest Restaurant | La Corniche<br>(220m)        |
| Nearest Bar/Pub    | Alex Bar<br>(380m)           |



|                     |   |
|---------------------|---|
| Nearest Supermarket | <b>SPAR<br/>(300m)</b>                            |
| Nearest Ski Hire    | <b>Skiset<br/>(260m)</b>                          |
| Nearest Piste       | <b>Savonette<br/>(350m)</b>                       |
| Nearest Ski Lift    | <b>Savonnette (access to Solaise)<br/>(300 m)</b> |

## What we love

- The spacious lounge and dining area are perfect for gathering after a day on the slopes.
- The chalet's location was truly fantastic – within walking distance from the slopes and lifts, making it incredibly convenient to get those first lifts.
- Val d'Isère offered us a wide array of activities, making it an ideal destination for a group with varied interests.

## What you should know...

- Val d'Isère is well known for its lively apres-ski scene and parties, make the most of the atmosphere after a day on the slopes.
- The free shuttle bus that runs through Val d'Isère helps you explore the other restaurants and bars in the surrounding areas.
- This property's pricing is based on catered, if you would like to book this property on a self-catering basis please visit Chalet Marais (<https://www.oliverstravels.com/ski/france/espace-killy/val-d-isere/chalet-marais/>).

# Terms & Conditions

- **Security deposit:** €2,000 charged to client's credit card by the owner upon arrival and refunded 15 days after departure, subject to full inspection
- **Arrival time:** Check-in 5.00 PM.
- **Departure time:** Check-out 10.00 AM
- **Energy costs included?:** Yes, included in the rental price
- **Linen & towels included?:** Yes, included in the rental price
- **Pets welcome?:** Not allowed
- **Changeover day:** Saturday
- **End of stay cleaning available?:** Yes. However, guests are required to leave the accommodation clean, tidy and in the same condition as on their arrival. Any extra cleaning, laundry, maintenance and/or rubbish disposal required will be charged against the security deposit
- **Smoking Allowed?:** Smoking & vaping are not permitted
- **Minimum stay:** 7 nights
- **Heating costs included?:** Yes, included in the rental price
- **Tax:** French Visitors Tax is included in the rental price.
- **Internet access?:** Wi-Fi internet access included
- **Property Licence Number:** 73304 0013488S