

Chalet Clo

Region: Espace Killy **Sleeps:** 12

Overview

Chalet Clo – Where Alpine Elegance Meets Contemporary Comfort.

Perched above the heart of Val d'Isère, Chalet Clo is a masterpiece of alpine luxury. With space for up to 12 guests across five beautifully designed bedrooms, this four-level retreat blends traditional Savoyard style with all the trimmings of modern indulgence.

Inside, you'll find warm, open-plan living spaces, a sleek, fully equipped kitchen, and terraces that open out to jaw-dropping views over the village and slopes. After a day carving fresh powder in the Espace Killy, retreat to your private spa – complete with a sunken jacuzzi, rain shower, sauna, and loungers.

Bedrooms are generously spread across all floors. The lower ground floor houses two elegant twin/double suites with luxe linens, ensuite bathrooms, and TVs. The upper ground floor includes a family suite with twin beds, a bunk area for children, a private shower room, and balcony access. On the first floor, a double room offers an ensuite bathroom and TV, while the top floor reveals a showstopper suite with a pitched roof, double-height ceilings, and sweeping mountain views from the balcony.

You're a five-minute drive from the pistes, and with a complimentary driver service at your disposal, getting around is seamless. Enjoy a contactless catered chalet experience, or opt for à la carte catering if you're in the mood to be properly spoiled.

Val d'Isère and its twin resort, Tignes, offer access to one of Europe's premier ski domains. Expect over 300km of runs, modern lifts, family-friendly facilities, and a lively après scene. Back at base, Chalet Clo comes with ski storage, boot warmers, private parking, and even a garage.

Travelling as a larger group? Consider booking neighbouring Chalet Sanglier (<https://www.oliverstravels.com/ski/france/espace-killy/val-d-isere/chalet-sanglier/>) too. With both chalets together, it's the perfect set-up for a full-service holiday with extended family or friends – and a guarantee that no one misses out.

Facilities

Bus/Shuttle To Slopes • Wellness • Ski Chalet • Ideal for Xmas/NY • Skiing
• Catered • Walk to Village • Ideal for Kids • Ideal for Teens • Special Offer • Has Discount • Wow Factor • Maid Service Available • Cots (Cribs)
• Modern • Walk to Restaurant • Parking Space • Wi-Fi/Internet • Lakes and Mountains • Washing Machine • Outstanding Landscapes • Coffee Machine • Outdoor Pursuit & Activities • Tourist Towns & Villages •



Spa/Massage • Chalet • TV • Hot Tub • Tumble Dryer • Dishwasher • Microwave • Sauna/Steam • Working Fireplace/Woodburner • Heating • Pre-Stocked Fridge Available • Transfers Available • Catered • High Chair(s)

Interior & Grounds

The Chalet

Lower Ground Floor

- Spa area with jacuzzi, sauna and rain shower
- Laundry room
- 2 en-suite bedrooms with twin beds

Upper Ground Floor

- Open plan living and dining area
- Fully equipped kitchen
- Family suite with twin beds and an additional children's bunk bed

First Floor

- Entrance hall
- Ski room with boot warmers
- Guest WC
- Balcony
- Bedroom with double bed and en-suite shower room

Second Floor

- Double bedroom with en-suite shower room, TV

Additional Facilities

- Oven
- Hob
- Microwave
- Dishwasher
- Fridge
- Freezer
- Kettle
- Cafetière
- Wi-fi
- Wine fridge
- Woodfire



Location & Local Information

Set against the spectacular backdrop of the Espace Killy, Val d'Isère is one of Europe's most iconic ski destinations – and it's easy to see why. With its charming stone-and-timber architecture, vibrant après-ski scene, and world-class slopes, this celebrated resort blends old-world mountain charm with cutting-edge facilities.

Linked with neighbouring Tignes, the area offers over 300km of pistes, from gentle beginner-friendly runs to thrilling off-piste routes for seasoned skiers. Modern gondolas (complete with heated seats and Wi-Fi), snow-sure conditions, and high-altitude terrain make Val d'Isère a dependable choice for early or late-season skiing. Off the slopes, you'll find indulgent spas, stylish boutiques, and a thriving dining scene that ranges from rustic Savoyard eateries to Michelin-starred restaurants.

Tucked along the prestigious Chemin du Petit Alaska, Chalet Clo is perfectly placed to take it all in. From its elevated position, guests enjoy sweeping views across the valley and down into the town, which is just a short stroll or five-minute drive away. A complimentary driver service makes exploring utterly effortless.

While the mountains draw thrill-seekers, the town itself holds plenty of charm. Wander cobbled streets lined with independent shops and cosy cafés, or linger over a glass of vin chaud as the sun dips behind the peaks. Families are well catered for too, with excellent ski schools, gentle nursery slopes, and indoor leisure centres.

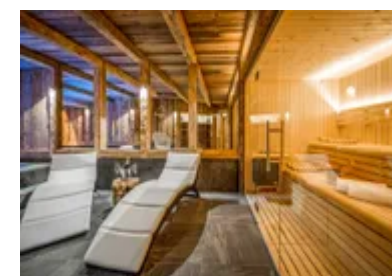
And after a full day out? Return to the calm embrace of Chalet Clo. With private spa facilities, panoramic balconies, and spaces designed for laid-back entertaining, it's the ideal base from which to explore – and unwind.

For those travelling in a larger group, Chalet Sanglier (<https://www.oliverstravels.com/ski/france/espace-killy/val-d-isere/chalet-sanglier/>) sits close by and can be booked alongside Chalet Clo for an elevated experience with friends or extended family.

Val d'Isère is more than a ski resort – it's a lifestyle. And Chalet Clo lets you live it in style.

Local Amenities

Nearest Airport	Geneva (182 km)
Nearest Town/City	Val-d'Isère (1.6km)
Nearest Restaurant	Le Grange (650m)
Nearest Bar/Pub	Le B'Bar Val d'Isère (450m)



Nearest Supermarket	SPAR (650m)
Nearest Piste	Face (800 m)
Nearest Ski Lift	Olympique / Solaise (800 m)
Nearest Ski Hire	Sport 2000 (700m)

What we love

- Chalet Clo boasts a breath-taking fusion of Alpine architecture and modern comforts, creating an exquisite interior design that captures the essence of luxury.
- The chalet's spectacular spa area, featuring lavish loungers, a sauna, sunken jacuzzi, and a refreshing rainfall shower is the best way to recover after a day on the mountains.
- For utmost convenience, a private shuttle service can be arranged upon request, seamlessly transporting guests to and from the slopes.

What you should know...

- This property's pricing is based on catered, if you would like to book this property on a self-catering basis please visit Chalet Marmotte. (<https://www.oliverstravels.com/ski/france/espace-killy/val-d-isere/chalet-marmotte/>)
- If you want to use the private shuttle service, please make sure you book this in advance of your trip.
- The delicious Contactless Catering service meant we could totally relax without the worry of shopping and cooking!

Terms & Conditions

- **Security deposit:** €2000 paid via bank transfer to the owner before arrival and refunded two weeks after departure, subject to full inspection.
- **Arrival time:** Check-in 5.00 PM.
- **Departure time:** Check-out 10.00 AM.
- **Energy costs included?:** Yes, included in the rental price.
- **Linen & towels included?:** Yes, included in the rental price.
- **Pets welcome?:** Not allowed.
- **Changeover day:** Sunday
- **End of stay cleaning:** Standard changeover clean included in the price. Guests are required to leave the accommodation clean, tidy and in the same condition as on their arrival. Any extra cleaning, laundry, maintenance and/or rubbish disposal required will be charged against the security deposit.
- **Smoking Allowed?:** Smoking & vaping are not permitted.
- **Minimum stay:** 7 nights
- **Heating costs included?:** Yes, included in the rental price.
- **Tax:** French Visitors Tax is included in the rental price.