

Apartment Coco

Region: Paris Sleeps: 8

Overview

Nestled within a prestigious Haussmann-style building, Apartment Coco exudes refined elegance and offers an exceptional retreat in this coveted neighbourhood straddling the borders of Neuilly-sur-Seine and the 17th arrondissement of Paris. With its spacious living space, this remarkable abode captivates the senses, harmonising tranquillity with the allure of urban living.

As you step inside Apartment Coco, a grand entrance hall welcomes you, setting the tone for the interior style that awaits. The interiors have been meticulously renovated, seamlessly blending classic charm with contemporary comforts. The double living room is a true masterpiece, providing an exquisite space for relaxation and entertainment, bathed in natural light that streams through large, elegant windows. The fully equipped kitchen is where culinary aspirations can come to life. From intimate family meals to hosting lavish soirées, this space is a testament to the seamless blend of functionality and sophistication.

This beautiful residence boasts four generously sized bedrooms, each designed to offer a haven of comfort and privacy. These tranquil spaces beckon you to unwind with their tasteful furnishings and soothing ambience. The master suite, in particular, radiates a sense of luxury, providing a private sanctuary where you can indulge in complete serenity. There are three impeccably designed bathrooms and four toilets for your convenience.

A true gem of this extraordinary property lies in its private garden, a rare green sanctuary in the city's heart. Stepping into the traditional conservatory, you are bathed in sunlight, enveloped by a peaceful oasis that invites you to savour quiet moments of reflection or entertain guests in an enchanting setting.



With its unrivalled charm, meticulous attention to detail, and idyllic location, Apartment Coco presents an extraordinary opportunity to immerse yourself in the quintessential Parisian lifestyle. Experience the perfect fusion of timeless elegance, urban vibrancy, and serenity within this remarkable home away from home.

Facilities

Boat Trips • Walk to Village • Romantic • Walking/Hiking Paths • Ideal for Kids • Horse Riding • Historical Sites • Recommended • Air-Con • City Homes & Apartments • Ideal for Teens • Cots (Cribs) • Has Discount • Special Offer • <1hr to Airport • Walk to Restaurant • Wi-Fi/Internet • Washing Machine • Coffee Machine • Tourist Towns & Villages • TV • DVD • Tumble Dryer • Dishwasher • Satellite TV • Heating • Kid-friendly museum • Kid-friendly excursions • Amusement park • Playground nearby • No car required • Children's books • Ideal for Babies & Toddlers • High Chair(s)

Interior & Grounds

The Apartment

Prestigious Haussmann-style property with a private garden, timeless elegance, and a prime location on the border of Neuilly-sur-Seine and the 17th arrondissement.

Interior:

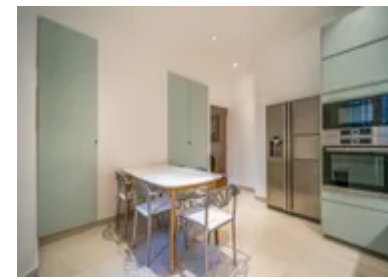
- Grand entrance hall
- Double living room
- Fully equipped kitchen
- Conservatory
- Laundry room
- Cellar
- Bedroom 1: Double bed with en-suite
- Bedroom 2: Double bed with en-suite
- Bedroom 3: Double bed
- Bedroom 4: Double bed
- Bathroom
- WC

Exterior

- Private Garden

Additional Facilities

- Wi-Fi
- Toiletries
- Fresh sheets and towels



Location & Local Information

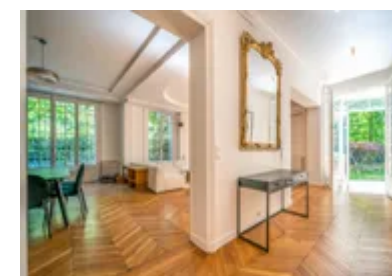
Nestled in one of the most coveted locations in Paris, Apartment Coco offers a prime address on the border of Neuilly-sur-Seine and the 17th arrondissement. This prestigious neighbourhood epitomises sophistication, combining the allure of urban living with the tranquillity of residential charm.

Surrounded by the unmistakable Haussmann-style architecture that defines Paris, Apartment Coco is immersed in a tapestry of elegance and history. The wide boulevards lined with majestic buildings exude a timeless grandeur, while tree-lined streets and charming squares evoke a sense of serenity amidst the bustling city.

Just steps away from the property, guests have access to an array of amenities and conveniences. The neighbourhood is teeming with high-end boutiques, gourmet restaurants, and chic cafes, offering a wealth of options for indulging in retail therapy or savouring a culinary adventure. A stroll along the nearby Avenue des Ternes or Avenue de Neuilly allows one to explore a diverse range of shops and savour the vibrant atmosphere.

The nearby Bois de Boulogne beckons with its lush greenery and picturesque landscapes for those seeking respite from the urban buzz. This expansive parkland offers an oasis of tranquillity where one can enjoy leisurely walks, picnics by the lake, or engage in various outdoor activities. The enchanting Jardin d'Acclimatation, a delightful amusement park within the Bois de Boulogne, provides endless entertainment for families and visitors of all ages.

The apartment also benefits from excellent transportation links, allowing residents to explore the city and beyond effortlessly. Nearby metro stations and bus stops connect you to the rest of Paris, making it easy to visit iconic landmarks such as the Champs-Élysées, the Louvre Museum, or the Eiffel Tower. Additionally, the proximity to major roadways and highways ensures convenient access



to airports and other destinations.

Staying in this prestigious location offers the utmost convenience and the opportunity to immerse oneself in the rich cultural heritage of Paris. From museums and art galleries to theatres and music venues, the city's vibrant cultural scene is at your fingertips, promising endless exploration and inspiration.

Apartment Coco captures the essence of Parisian living at its finest. With its unrivalled location, residents can embrace the perfect balance of elegance, convenience, and a vibrant cosmopolitan lifestyle. Whether strolling along the boulevards, savouring culinary delights, or immersing oneself in the city's cultural tapestry, this remarkable location offers a truly exceptional experience for those seeking the quintessential Parisian lifestyle.

Local Amenities

Nearest Airport	Paris Charled de Gaulle Airport (26 km)
Nearest Train Station	Louise Michel Underground Station (750 m)
Nearest Supermarket	Auchan Supermarché (700 m)

What we love

- The apartment boasts a private 250 square metre garden, a true rarity in the heart of Paris!
- The apartment exudes timeless elegance, seamlessly blending classic charm with modern comforts
- This is a prestigious address in one of the most sought-after neighbourhoods in Paris!

What you should know...

- The building has an intercom system, access code, and a dedicated caretaker, ensuring comfort and safety
- The apartment includes a laundry room and a cellar, providing ample storage space and convenience for your everyday needs
- Great for families with kids; there is lots of room to spread out
- Please note: this apartment is suitable for a max of 5 adults and 3 children

Terms & Conditions

- **Security deposit:** €4000 charged to client's credit card before arrival and refunded two weeks after departure, subject to full inspection.
- **Arrival time:** Flexible check-in. Please confirm arrival ahead of time.
- **Departure time:** Flexible check-out.
- **Energy costs included?:** Yes, included in the rental price.
- **Linen & towels included?:** Yes, included in the rental price.
- **Pets welcome?:** No pets allowed.
- **End of stay cleaning:** Standard changeover clean included in the price. Guests are required to leave the accommodation clean, tidy and in the same condition as on their arrival. Any extra cleaning, laundry, maintenance and/or rubbish disposal required will be charged against the security deposit.
- **Other Cleaning:** Mid-stay clean on a Tuesday and Friday also included
- **Smoking Allowed?:** Smoking & Vaping are not permitted.
- **Insurance:** Guests are required to be in possession of a valid insurance policy, which covers them for cancellations, loss of personal belongings, personal liability and any accidental damage caused during their stay.
- **Heating costs included?:** Yes, included in the rental price.
- **Tax:** Paris Tourist Tax is included.
- **Internet access?:** Wi-Fi internet access included.