

Clover Cottage

Region: The South West **Sleeps:** 4

Overview

With pops of colour and bundles of cottage charm, this two-hundred-year-old property nestled in a quiet hamlet by Padstow is a delightful holiday home for up to four guests. Gleaming white walls and sky-blue window frames welcome you to Clover Cottage, where you can relax and unwind in peace and tranquillity with the option to live it up at the lively restaurants and beaches of North Cornwall just a short distance away.

The living room area is a dream place to relax with a paper and a cup of morning coffee with a soothing décor boasting exposed wooden beams, a large fireplace with a log burner and comfy sofas to put your feet up in and soak up the holiday atmosphere.

A well-stocked kitchen centres around a farmhouse-style dining table, with everything you could need to cook up an evening meal to be enjoyed at the table late into the evening with a bottle of wine or two. Included for your convenience is a washing machine, dishwasher, microwave and cutlery to make it easy to get cooking while guests can saunter in and out of the lovely garden space.

Head upstairs for your evening rest in the heavenly bedrooms, complete with soft bed linens, iron-framed beds and elegant furnishings. The master bedroom benefits from a super king-size bed to allow you to stretch out in style as you listen to the bird song through the open window. The second bedroom has two lovely twin beds and shares the bathroom with the master, complete with a deep bath and step-in shower.

With a glorious garden, fenced off for privacy, at your disposal, kids and pets can roam free on the lawn, a lovely space to end the day after a lively spot of sightseeing in



the gorgeous Cornish surroundings. Just a short drive away is the bustling town of Padstow or the stunning sandy beaches of the North Cornish Coast. If you can tempt yourself away from the charm and character of your holiday cottage, then there is so much to see and do.

Facilities

Wi-Fi/Internet • TV • Hairdryer • Cycling • Walking/Hiking Paths • Beach Nearby • Great Value • Rural Location • Cottage • Ideal for Kids • Ideal for Teens • Pets on Request • <1hr to Airport • Working Fireplace/Woodburner • Heating • Parking Space • Tourist Towns & Villages

Interior & Grounds

Ground Floor

- Kitchen dining area with four-seater table
- Living room with log-burning stove

First and Second Floor

- Super-king bedroom
- Twin bedroom
- Shared bathroom with bath and shower

Exterior Grounds

- Patio and lawn area
- Garden furniture
- Parking

Additional Facilities

- Wi-Fi (please request)
- Dishwasher
- Washing machine
- Microwave
- Fridge
- Freezer
- Toaster
- TV
- Fireplace
- Hairdryer
- Bed linen and towels provided
- Kitchen Utensils



Location & Local Information

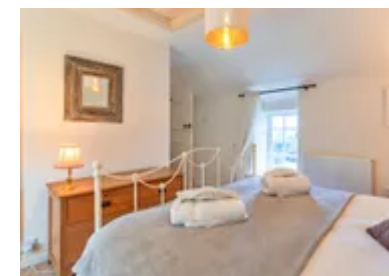
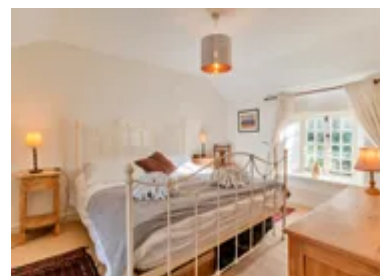
Set in the convenient mid-Cornwall position, the house is within half an hour's drive of many of the main Cornish attractions. On the North coast, a visit to the bustling seaside town of Padstow has so much to offer.

Try your hand at crabbing in the harbour, grab yourself a local pasty for lunch or take a boat trip over to nearby Rock. We recommend visiting the fascinating National Lobster Hatchery to observe the lifecycle of marine lobsters run by local experts. Padstow is also home to several delicious Rick Stein eateries, from grab-and-go fish and chips to the flagship Seafood Restaurant serving a selection of fresh from the ocean dishes from scallops, moules, lobster and more.

With its enviable coast, Cornwall has many beaches from which crystal-clear waves await your enjoyment, with swimming, paddleboarding, water skiing, and boat rides all available. As the surfing mecca of the UK, Newquay is home to Britain's premiere surfing spot, Fistral Beach. World-renowned, it plays host to the Boardmasters International Surf Competition each year; whilst out of the water, Fistral and nearby Watergate Bay are the places to be for the annual five-day music festival, Boardmasters.

A gateway to Cornwall's wild beauty, there are many local beaches and beauty spots. Crantoch Beach is a must-see with its epic sand dunes, perfect for exploring; if you venture onto the footpaths to Polly Joke Beach, you might even spot some local seals sunning themselves on the secluded shore. Watergate Bay offers two miles of golden sand and a more peaceful environment, whilst a short drive will take you to the perfect rock-pooling spot at Porth Beach. Make sure you head out on the narrow footbridge to Porth Island for stunning views of the Cornish coastline. Or visit nearby National-Trust-owned Trerice, a charming Elizabethan manor with picture-perfect gardens perched just outside Newquay.

On the South coast, a trip to The Eden Project in St. Austell is only a thirty-minute drive, a perfect spot for families



where you can walk amongst the dramatic tropical biomes and experience the sights and smells of the rainforest. There are fascinating displays on climate and sustainability and a large restaurant and gift shop to keep the kids fed and happy!

Why not take a day trip to St. Ives for a little local culture and visit the Cornish home of the Tate Gallery to check out exhibits of both famous and local artists and browse the local artisan shops?

Local Amenities

Nearest Airport	Cornwall Airport Newquay (14.6 km)
Nearest Train Station	St Columb Road Station (12.3 km)
Nearest Village	St Issey (1.8 km)
Nearest Town/City	Wadebridge (8.5 km)
Nearest Restaurant	Halfway House Country Inn (2.8 km)
Nearest Bar/Pub	Trevibban Mill Vineyard (1.3 km)
Nearest Supermarket	Lidl (8.2 km)
Nearest Beach	Porthcothan Beach (12 km)
Nearest Golf	St Enodoc Golf Club (19.4 km)
Nearest Tennis	Wadebridge Tennis Club (9 km)

What we love

- Cosy up by the stone fireplace and read a book with the wood burning stove warming your toes!
- A private garden offers a lovely space for kids and pets to roam
- The two-hundred-year-old cottage shows its historic character whilst displaying modern taste and colourful soft furnishings
- With the restaurants of Padstow, a short distance way you will be spoilt for choice for places to enjoy an evening meal

What you should know...

- There are steep steps and no fence between the upper garden and patio, so caution is advised to children and those with mobility issues
- There are no ground floor bedrooms

Terms & Conditions

- **Security deposit:** £150 charged to client's credit card as a pre-authorisation at least 2 weeks prior to arrival and refunded two weeks after departure, subject to full inspection
- **Arrival time:** 4:00 PM
- **Departure time:** Before 10:00 AM
- **Energy costs included?:** Yes, included in the rental price
- **Linen & towels included?:** Yes, included in the rental price
- **Pets welcome?:** On request only and with prior agreement from the owner, £25 per booking
- **Changeover day:** Monday or Friday
- **End of stay cleaning available?:** Yes. However, guests are required to leave the accommodation clean, tidy and in the same condition as on their arrival. Any extra cleaning, laundry, maintenance and/or rubbish disposal required will be charged against the security deposit
- **Smoking Allowed?:** Smoking & Vaping are not permitted
- **Minimum stay:** 3 nights
- **Heating costs included?:** Yes, included in the rental price
- **Internet access?:** Wi-Fi internet access included