

Ponte Vecchio Apartment

Region: Italy Sleeps: 5

Overview

This exclusive penthouse is situated in one of the most prestigious streets of Florence, boasting a prime location on the sixth and top floors of a building facing the Ponte Vecchio. As you enter the apartment, you are greeted by a unique view of the Ponte Vecchio and the heart of Florence, where you can admire the most iconic monuments of the city, such as the Cathedral of Santa Maria del Fiore, Giotto's Bell Tower, Palazzo Vecchio, the Vasari Corridor, the Basilica of Santa Croce, and an unparalleled view of the Lungarno.

Ponte Vecchio Apartment is composed of a spacious living room, which is unique in its kind, offering one of the most breathtaking views in the city. It is a bright and peaceful space where you can relax and immerse yourself in the timeless beauty of Florence. The living room features a four-meter-wide and two-meter-high window, designed to give the feeling of looking at a timeless painting.

Throughout every room, the apartment features high-quality artisanal Italian design furniture signed by Poltrona Frau, one of the most prestigious and renowned companies in the world of design. The furniture is of the highest quality, and the finishes are exceptional, showcasing the beauty and elegance of Italian craftsmanship. The kitchen is bright and airy, offering stunning views of the city. It features all the latest appliances, including an oven, microwave, dishwasher, induction hob, and refrigerator, and comes fully equipped with all the utensils you need to cook up a storm.

The penthouse also features two luxurious bedrooms, each with its private bathroom, dressing room, queen-size or king-size bed with memory foam pillows, and smart TV. The bathrooms are covered with precious marble and come with a welcome kit, towels, bathrobes, and hair dryers.

Outside, the forty-square-meter terrace and solarium offer a charming space to relax and unwind in total privacy. The terrace offers a fantastic view of the city, the perfect place to enjoy a glass of Chianti while admiring the beauty of Florence.

Ponte Vecchio Apartment is the perfect place to experience the timeless beauty of Florence. With its prime location, stunning views, exquisite design, and luxurious amenities, this apartment will provide a unique and unforgettable experience.

Facilities

Romantic • Special Offer • Has Discount • Laptop Friendly Workspace • Wow Factor • Waterfront • Cots (Cribs) • Wi-Fi/Internet • Air-Con • City



Homes & Apartments • Kid-friendly museum • Kid-friendly excursions • No car required • Ideal for Babies & Toddlers • Ideal for Kids • Plastic crockery • Ideal for Teens • Walk to Village • Walk to Restaurant • <1hr to Airport • Coffee Machine • Hairdryer • All Bedrooms En-Suite • Smart TV • Satellite TV • TV • Heating • Outstanding Landscapes • Tourist Towns & Villages • Historical Sites • Boat Trips

Interior & Grounds

The Apartment

Two bedroom penthouse apartment, with breath-taking views of Florence's historic landmarks and designer Italian furnishings.

Interior

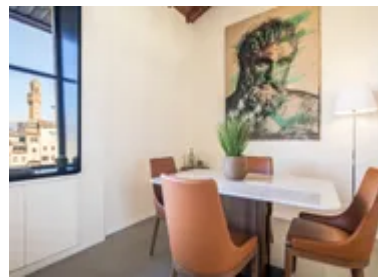
- Living room and dining area
- Guest bathroom
- Well-equipped kitchen
- Bedroom 1: Double bed with en-suite bathroom and walk-in closet
- Bedroom 2: Double bed with en-suite bathroom and walk-in closet

Exterior

- Terrace with a solarium

Additional Facilities

- Wi-Fi
- Toiletries
- Hair Dryer
- Washing machine
- Iron
- TV
- Coffee maker (pour over)



Location & Local Information

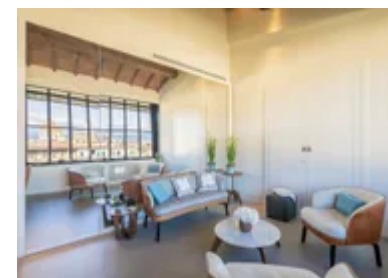
Ponte Vecchio Apartment is located in one of the most prestigious streets of Florence, Italy. Situated on Lungarno degli Acciaiuoli, the apartment is on the sixth and top floors of a building facing the iconic Ponte Vecchio. The location offers unparalleled views of the historic city centre and the Arno River, making it the perfect spot for anyone seeking a quintessential Florentine experience.

The neighbourhood is steeped in history, art, and culture. Just steps away from the apartment lie the world-renowned Uffizi Gallery, which houses an impressive collection of Renaissance masterpieces. Across the river, the grand Palazzo Pitti, once the residence of the powerful Medici family, is a must-visit for any art lover. The neighbourhood is also home to the stunning Boboli Gardens, an expansive green space filled with fountains, sculptures, and panoramic city views.

The area surrounding the apartment is bustling with activity, with an array of shops, cafes, and restaurants. For a taste of traditional Florentine cuisine, head to the nearby trattorias that serve classic dishes like Bistecca alla Fiorentina (Florentine-style steak) and Pappa al Pomodoro (a hearty tomato and bread soup). For those looking for something more upscale, the neighbourhood is also home to several Michelin-starred restaurants, including Ora d'Aria and La Bottega del Buon Caffè.

In addition to its cultural and culinary offerings, the penthouse's location is also convenient for those looking to explore the city. The bus station and tram stop are just a short walk away, providing easy access to other parts of Florence. For those looking to venture further afield, the Santa Maria Novella train station is just a 20-minute walk, or a short taxi ride away.

The location of the Ponte Vecchio Apartment is simply unbeatable. It offers the perfect combination of historical significance, cultural richness, and modern convenience; all wrapped up in one picturesque package. Whether



you're a first-time visitor to Florence or a seasoned traveller, this location is sure to leave a lasting impression.

Local Amenities

Nearest Airport	Florence Peretola Airport (7 km)
Nearest Train Station	Firenze Santa Maria Novella (2 km)
Nearest Supermarket	Sapori & Dintori Conad (23 m)

What we love

- The apartment boasts breath-taking views of Florence's most iconic landmarks, including the Ponte Vecchio and the Cathedral of Santa Maria del Fiore!
- The apartment's exquisite interior design features high-end, handcrafted furniture by renowned Italian brand Poltrona Frau
- The spacious terrace with a private solarium offers an oasis among this vibrant city!

What you should know...

- Access to the apartment is via a private lift, for which a unique key is required. The keys will be delivered by the concierge, who will welcome and accompany you to the apartment
- Extra services are available upon request including cleaning, babysitting and parking
- There are several public transport options within a short walk of the apartment

Terms & Conditions

- **Arrival time:** 4.00 p.m.
- **Departure time:** 10.00 a.m.
- **Energy costs included?:** Yes, included in the rental price.
- **Linen & towels included?:** Yes, included in the rental price.
- **Pets welcome?:** Not allowed.
- **End of stay cleaning available?:** Yes. However, guests are required to leave the accommodation clean, tidy and in the same condition as on their arrival. Any extra cleaning, laundry, maintenance and/or rubbish disposal required will be charged against the security deposit.
- **Smoking Allowed?:** Smoking & Vaping are not permitted.
- **Heating costs included?:** Yes, included in the rental price.
- **Tax:** Italian City Tax of €5.50 per night, up to 7 nights. Payable locally.
- **Internet access?:** Wi-Fi internet access included.
- **Stag & Hen Do Allowed? :** Please note that there are no parties allowed in this property at any time.