

Apartment Diamente

Region: Spain Sleeps: 7

Overview

Nestled between La Bordeta and El Poble-Sec in the bohemian suburb of Hospitalet de Llobregat in Barcelona, this sleek and contemporary four-bedroom split-level apartment has been thoughtfully designed to provide a comfortable and stylish stay for up to seven guests, making it an ideal choice for families or groups of friends looking to experience Barcelona while enjoying a slightly quieter atmosphere away from the bustling (at times wonderfully chaotic) city centre.

Upon entering the apartment, you'll be greeted by an open-plan living area with double-height ceilings seamlessly combining the seating and dining spaces. The décor exudes simplicity and elegance, with clean lines, modern furnishings, and tasteful accents, offering an understated yet cosy spot to relax and unwind after a day of exploring the city. At the same time, the adjacent dining space provides ample room for enjoying a laid-back meal together. On this level, there is also a modern and well-equipped kitchen where you can channel your hidden (perhaps very hidden) culinary talents as you try to replicate some of the mouth-watering flavours you will no doubt have encountered on your journeys around the Catalan capital.

Upstairs, you will find the four simple yet striking bedrooms, the luxurious-feeling master suite, then two inviting twin rooms, each with a pair of single beds, and finally, a light-filled single room – perfect perhaps for a teenager. With comfortable beds and tasteful finishing touches, each bedroom offers a tranquil retreat where you can rest and rejuvenate after a day of discovery. The apartment has two bathrooms: the master ensuite and an additional family bathroom, both of which have been finished to the same high standard as the rest of the home and offer a relaxing space where you can refresh and



indulge in a spot of pampering (perhaps before a night on the tiles, sampling the famously exuberant Barcelona nightlife).

Staying in this apartment allows guests to experience the best of Barcelona while being slightly removed from the non-stop fiesta of the city centre, as L'Hospitalet de Llobregat offers a residential environment with excellent connectivity to the heart of Barcelona. Nearby amenities, such as parks, shopping centres, and transportation options, provide convenience and accessibility and so make it an excellent choice for families or groups of friends looking to enjoy Barcelona while having a peaceful retreat to return to.

Facilities

Coffee Machine • Hairdryer • Historical Sites • Wi-Fi/Internet • Air-Con • TV • City Homes & Apartments • Romantic • Washing Machine • Lift • Walk to Village • Cots (Cribs) • Kid-friendly museum • Kid-friendly excursions • Water excursions/Boat trips • Amusement park • Playground nearby • Ideal for Babies & Toddlers • Ideal for Kids • Ideal for Teens • Walk to Restaurant • <1hr to Airport • Tumble Dryer • Dishwasher • Microwave • Satellite TV • Heating • High Chair(s) • Outdoor Pursuit & Activities • Tourist Towns & Villages

Interior & Grounds

The Apartment

Located in the Barcelona suburb of Hospitalet de Llobregat but still within easy reach of the lively city centre, this striking modern split-level home for up to seven guests offers a sleek and stylish base on the outskirts of the ever-exuberant city centre. Comprising an open-plan living and dining area, a well-equipped kitchen, a master suite, room for five more guests, and a family bathroom with a bathtub, this home is excellent for families, friends, or even groups of couples.

Interior: 85 sqm

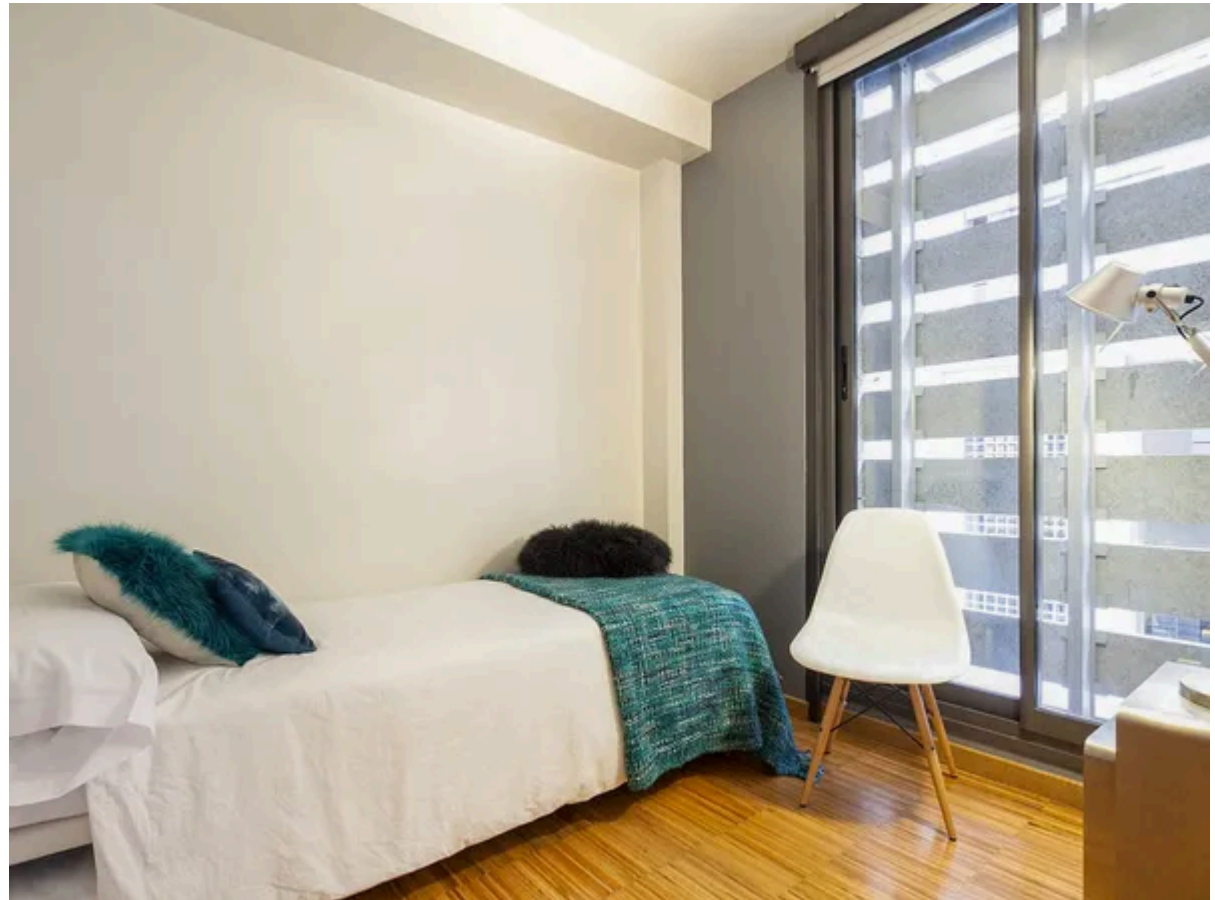
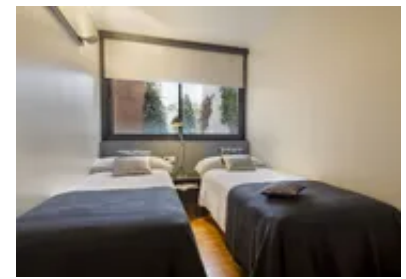
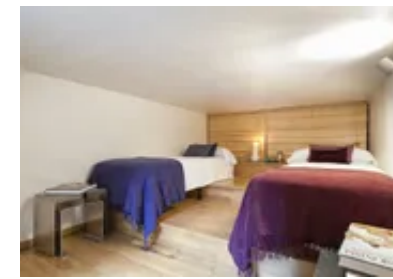
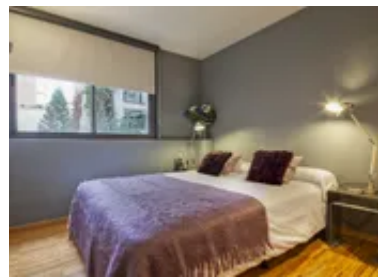
- Spacious open-plan living with a dining area
- Fully-equipped modern kitchen
- Double bedroom with ensuite bathroom
- Twin bedroom
- Twin bedroom
- Single bedroom
- Separate family bathroom with bathtub

Exterior:

- Balcony – mentioned once in the copy but no evidence elsewhere?

Additional Facilities:

- Air-conditioning
- Central Heating
- TV
- Hairdryer
- Washing machine
- Dryer
- Iron
- Coffee machine
- Cot & Highchair available upon request



Location & Local Information

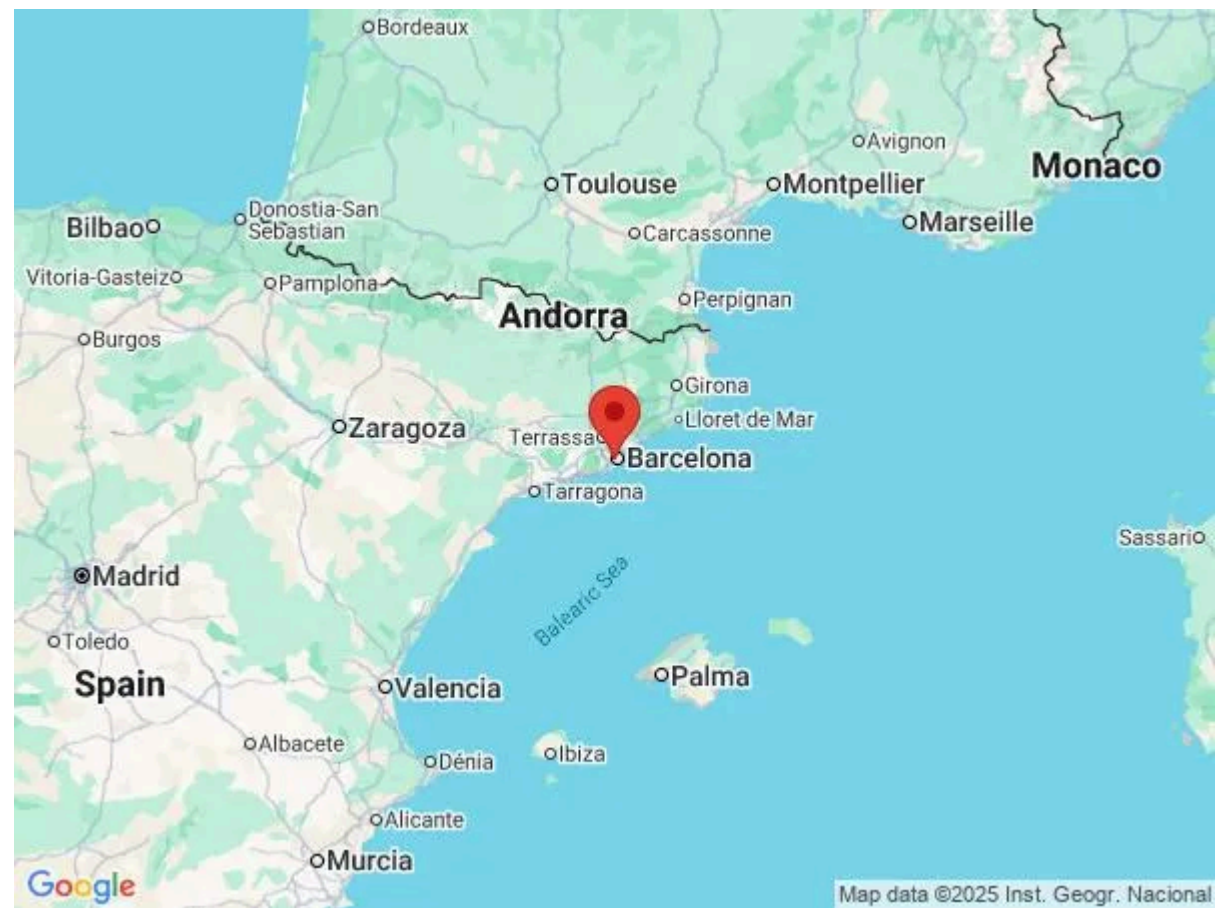
Located just outside the bustling city centre of Barcelona, in a quieter and more residential part, Hospitalet de Llobregat offers a delightful taste of authentic Catalan life. Nestled in the shadow of the iconic Montjuïc mountain, this charming neighbourhood provides a serene retreat while still within easy reach of the city's vibrant attractions.

Despite its peaceful ambience, Hospitalet de Llobregat benefits from excellent transportation links, ensuring you're always in the action. Within the local area, you'll find everything you need for your day-to-day needs, including shops, cafes, and a selection of bars and restaurants, providing a convenient and hassle-free stay.

One of the highlights of this neighbourhood is its proximity to several beautiful parks waiting to be explored. Nature enthusiasts will surely appreciate the Jardí Botànic de Barcelona, Jardí Botànic Istoric, Jardins de Joan Brossa, and Jardins de Mossèn Costa i Llobera, each offering picturesque green spaces for relaxation and leisurely walks. Additionally, football fans will rejoice at the close proximity of the renowned Camp Nou Stadium, where they can immerse themselves in the exuberant and thrilling atmosphere.

Art and culture aficionados will find themselves spoilt for choice with the variety of museums easily accessible from Hospitalet de Llobregat via public transport. Must-visit museums include the Museo Nacional de Arte de Catalunya, showcasing a vast collection of Catalan art; the Catalan Museum of Archaeology, providing insights into the region's rich history; the Fundació Joan Miró, dedicated to modern art; and Poble Espanyol, a captivating model town celebrating Spanish heritage that offers something different in the way of a family-friendly experience.

Barcelona's golden beaches are within easy reach for those seeking sun and sand. A short drive or a quick trip on public transport will take you to the lively and vibrant coastline, where you can bask in the sun and immerse



yourself in the eclectic beach culture. Enjoy a range of water sports, explore the beachfront shops, or simply unwind and listen to the soothing sound of waves lapping against the shore.

Exploring the city is a must, with endless possibilities to engage your senses. Take a stroll down the iconic Las Ramblas, make your way up Montjuïc on the cable car for breathtaking views, marvel at the architectural wonder of the Sagrada Família, or wander through the whimsical creations of Gaudí. Or, take things at your own pace and indulge in mouth-watering culinary delights, discover hidden gems in charming side streets, explore funky shops, and immerse yourself in the numerous art galleries and museums that showcase the vibrant Catalan culture.

You can experience the best of both worlds in Hospitalet de Llobregat – a tranquil residential retreat with easy access to Barcelona's lively and captivating attractions. Immerse yourself in the colourful Catalan capital, creating memories that will last a lifetime.

Local Amenities

Nearest Airport	Barcelona El Prat Airport (14 km)
Nearest Train Station	Lesseps Underground Station (400 m)
Nearest Supermarket	Caprabo (95 m)

What we love

- It's easy to love the living area of this home and how it provides a great social space for all of your group to come together over some great food, wine, and conversations
- This building has lift access, making this home a potential option for guests with minimal mobility issues
- Your host can arrange a variety of extra services for you, including luggage storage, cleaning services, grocery shopping services, airport pick-up-drop-off options, and even private driver/limo services, for an additional fee

What you should know...

- Please note that your hosts offer several rental apartments within the same building. Hence, the images displayed here represent the style of décor and finishings found in each. The exact form and features may differ slightly between them
- Although the building has lift access, this home is spread over two floors separated by a relatively steep floating staircase, so it may not be suitable for wheelchair users
- As this is a tranquil building in a residential area, social gatherings and parties of people not listed as guests are not permitted at this home

Terms & Conditions

- **Security deposit:** €400 charged to client's credit card before arrival and refunded two weeks after departure, subject to full inspection.
- **Arrival time:** 16:00.
- **Departure time:** 10.00 a.m.
- **Energy costs included?:** Yes, included in the rental price.
- **Linen & towels included?:** Yes, included in the rental price.
- **Pets welcome?:** No pets allowed.
- **End of stay cleaning available?:** Yes. However, guests are required to leave the accommodation clean, tidy and in the same condition as on their arrival. Any extra cleaning, laundry, maintenance and/or garbage disposal required will be charged against the security deposit.
- **Smoking Allowed?:** Smoking & Vaping are not permitted.
- **Heating costs included?:** Yes, included in the rental price.
- **Tax:** There is a city tax due to be paid locally which is not included in the rental rate. The amount will be confirmed by your onsite representative when you arrive.
- **Internet access?:** Wi-Fi internet access included.