

Chateau Fleur

Region: Dordogne Sleeps: 18

Overview

Château Fleur, built in 1611 during the time of King Louis XIII, has been beautifully renovated and furnished with a mix of contemporary and traditional French furniture. Situated on a low hill with expansive views of its surroundings, its classical architecture is one of careful symmetry and alignment.

Entry is via a stunning avenue of trees past classical iron gates and around a courtyard of traditional French sculptured hedges. Once through the front doors, you will be amazed at the three storey chandeliers casting the most wonderful light on elegant limestone balustrade stairs.

Being a château that has never been abandoned by its owners and its current owners only being its fifth since it was built, the château retains the best of everything of its period. From the ornate window handles in the shape of winged angels to its sculptured limestone balustrade staircase, imposing fireplaces, full length French windows, beamed ceilings and classical proportions, it is a home of perfect light and tranquility.

As well as its historical character and the beauty of its architecture, the high standard of the furnishings and facilities is evident throughout. The impressive kitchen is particularly noteworthy, it has been designed for a chef with only the very best professional appliances. Throughout the château you will appreciate the great care the current owners have taken to ensure the very best quality, design and finish for their guests.

This also extends to the stunning grounds, simply wonderful to stroll through, where you will find the spacious and inviting swimming pool surrounded by beautiful lawns, trees and gardens. The decked sun



terrace is a perfect place to relax, read a book, have an aperitif and take in the pretty views that surround you.

The property now has two one-bedroom Pavilions by the gates meaning the property can now sleep 16-18 guests when one or two of the Pavilions are booked alongside the main château.

Facilities

Pure France • Wi-Fi/Internet • Walking/Hiking Paths • Wine Tasting • Chateaux & Castles • Rural Location • Indoor Games • Cots (Cribs) • Has Discount • DVD • Special Offer • Gym/Fitness Room • Private Pool • Games Room • Heritage Collection • Heated Pool • Bikes • Ideal for Kids • Pool inflatables • Ideal for Teens • Smart TV • Satellite TV • Table Football • Working Fireplace/Woodburner • Heating • High Chair(s) • Outdoor Pursuit & Activities • Tourist Towns & Villages

Interior & Grounds

- 1) Château only (14-person price)
- 2) Château and West Pavilion (16-person price)
- 3) Château, West Pavilion and East Pavilion (18-person price)

Main Château Interiors

- Drawing room
- Library
- TV room
- Dining room with table for up to 16 guests
- Kitchen, fully-equipped including two hobs, two ovens, microwave, warming oven, two dishwashers, fridge and freezer. Doors lead to al-fresco dining/lounge decked terrace
- Breakfast room with breakfast bar and coffee machines
- Family/play room with sofas, table and chairs, UK Satellite TV with Netflix and Sky, DVD player and table football

First and Second Floor Bedrooms

- 4 x bedrooms with king-size double bed and en suite bathroom
- 2 x bedrooms with twin beds and en suite bathroom
- Bedroom with single bateau bed and roll-away bed underneath (has access to one of the en suite bathrooms either via back staircase or the bedroom)
- Bedroom with single bed (has access to one of the en suite bathrooms either via back staircase or the bedroom)

Bedrooms on the second floor have dormer windows

West Pavilion Interiors (by the gate, 30m from the château)

- Living-dining room and kitchenette
- First-floor bedroom with king-size double bed and en suite bathroom

East Pavilion Interiors (by the gate, 30m from the château)

- First-floor bedroom with king-size double bed and en suite bathroom

The East Pavilion's ground floor is for staff use only (guests and staff each have their own door to access the pavilion).

Outside Grounds

- Heated swimming pool (16x10m, depth: 1-4m) with pool safety cover. Open approximately mid-May to mid-October
- Al-fresco dining and lounge decked terrace
- Gas barbecue
- Garden and vast grounds Facilities
- Wi-Fi (both chateau and pavilion)
- TV
- Satellite TV with Sky and Netflix
- DVD player and library
- Books
- Board games
- Table football



Location & Local Information

The Château is located in the village of St Geyrac is on the border of Perigord Blanc (known for its beautiful limestone buildings) and Perigord Noir (known for its truffles). The medieval city of Perigueux, the capital of Perigord Blanc, with its magnificent cathedral and Roman ruins is only 22km away.

This area of the Dordogne is well known as the gastronomical centre of France with many great restaurants (some with Michelin stars!) and farmer's markets. Many grand chateaux and historical sites are nearby, including the Lascaux caves of prehistoric paintings made 17,000 years ago and the limestone dwellings at Les Eyzies inhabited by the Cro-Magnon man.

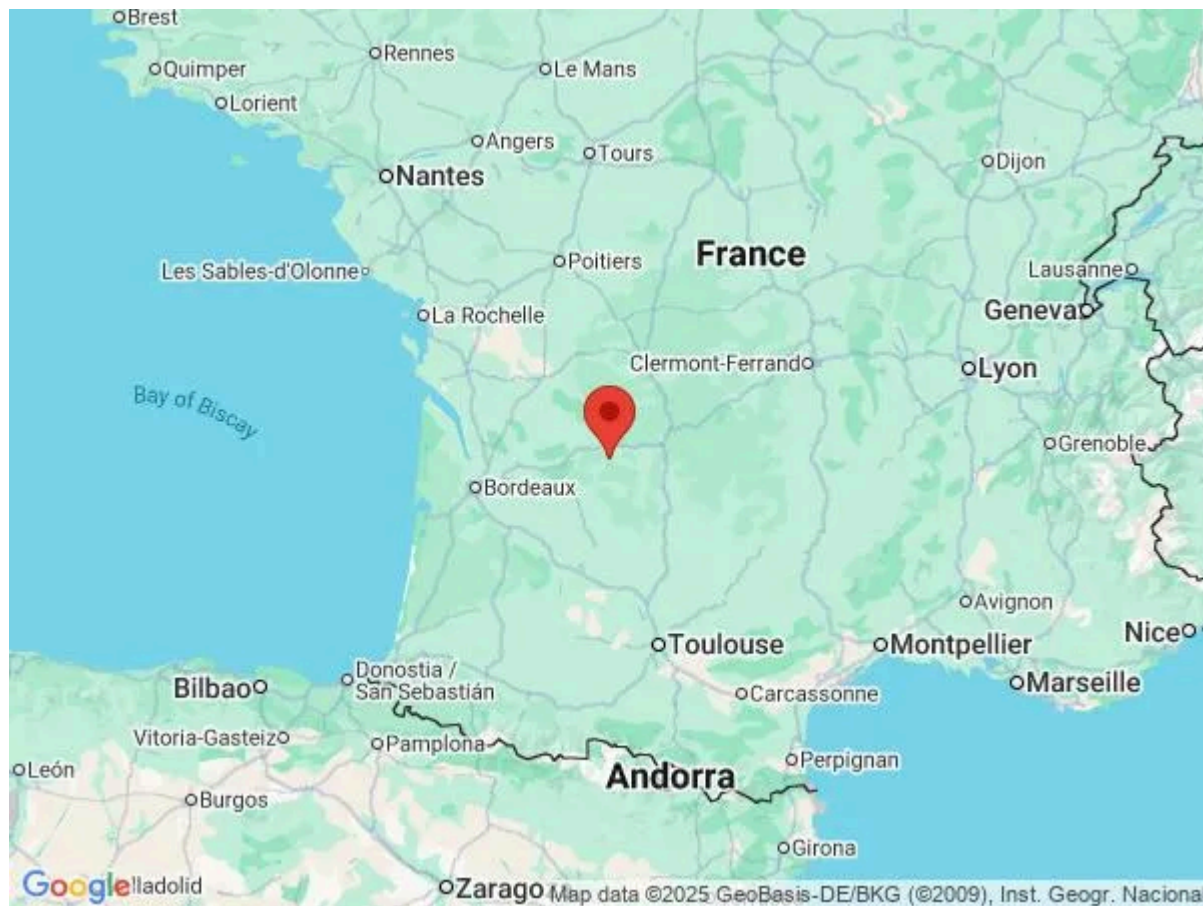
Sarlat, the capital of Perigord Noir, is another charming medieval city (46km) has an unmissable old town consisting of impeccably restored stone buildings and a medieval cathedral. Canoeing along the river and hiking are two of the popular activities in the Dordogne that should also be checked out!

Chateau Fleur is equidistant between Bergerac to the west and Brive-la-Gaillarde to the east (53km and 60km) where there are direct flights to and from London and Paris. The international airport at Bordeaux, 160km away, has connecting flights to many capitals of the world.

St Geyrac is a quiet commune with a church, a bar and a restaurant. There are no shops there. La Douze, the next village just 8km away from the chateau has a few restaurants, a good boulangerie/patisserie plus a few shops.

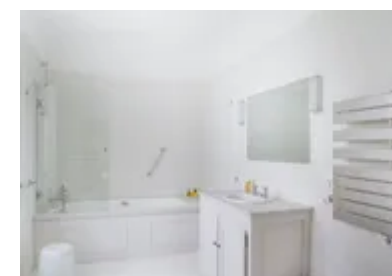
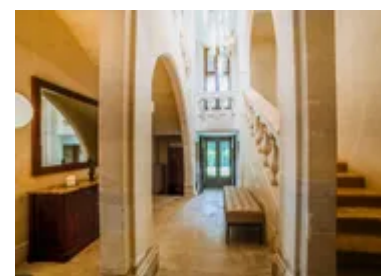
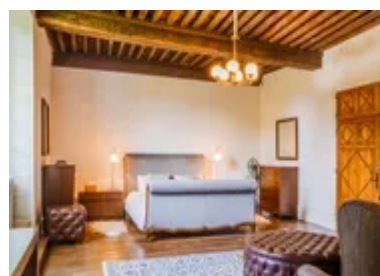
Milhac d'Auberche is a village 4km away with an excellent Michelin "bib gourmande" restaurant (one grade below a Michelin star).

Trelisac (located between St Geyrac and Perigueux) has a shopping park with huge supermarkets and many stores selling homewares, furnitures, clothing etc.



Local Amenities

Nearest Airport	Bergerac (55km)
Nearest Village	St Geyrac (2km)
Nearest Town/City	Perigueux (26km)
Nearest Restaurant	Quatre Saisons Restaurant, St Geyrac (2km)
Nearest Bar/Pub	Quatre Saisons Restaurant, St Geyrac (2km)



Nearest Supermarket

Trelisac
(21km)

What we love

- The property was nominated as one of the 20 Best Places to Stay in the Dordogne by The Times of the U.K. on 30 July 2016
- Listed as one of the The Guardian's Top 40 Best Family Holiday Villas in Europe!
- Elegant and architecturally stunning château situated on a low hill with wonderful views in every direction.
- Exceptionally high quality finishes by an interior designer and incredible chandeliers
- There is a huge playroom with large flat screen TV plus hundreds of DVDs as well as board games - perfect if it's a rainy day. The pool, to the rear of the chateau, is quite simply enormous!

What you should know...

- The 14-person price is for the main château only. The 16-person price also includes the West Pavilion whilst the 18-person price includes the West and East Pavilion. Please see the "Features" tab for details of the layout.
- Both pavilions are the gatehouses, situated around 30m from the main château building.
- If you book the main château only (14-person rate) then rest assured that the pavilions will not be rented out separately.
- The two annexe bedrooms (best suited for children) share one of the other bedroom's en suite bathrooms.
- There are no downstairs bedrooms.

Terms & Conditions

- **Security deposit:** €1200 charged to client's credit card as a pre-authorisation at least 2 weeks prior to arrival and refunded two weeks after departure, subject to full inspection.
- **Arrival time:** 4.00 p.m.
- **Departure time:** 9.30 a.m.
- **Energy costs included?:** Yes.
- **Linen & towels included?:** Yes.
- **Pets welcome?:** Not allowed.
- **Other Ts and Cs:** Château Fleur is solely for the guests' personal use, for self-catering holidays only. Guests are not permitted to use it for any form of business enterprise. Weddings, stag/hen parties and any special events are not allowed.
 The 14-person price is for the château only. The 16-person price also includes the West Pavilion and the 18-person price includes both the West and East Pavilions. Please see the "Features" tab for details on their layout.
 Please note that CCTV is installed in some exterior grounds for security purposes. Please enquire for more information.
- **Changeover day:** Saturday.
- **End of stay cleaning available?:** Standard changeover clean and mid-stay cleaning for stays over 7 nights are included in the price. Guests are required to leave the accommodation clean, tidy and in the same condition as on their arrival. Any extra cleaning, laundry, maintenance and/or rubbish disposal required will be charged against the security deposit.
- **Smoking Allowed?:** Not allowed.
- **Minimum stay:** 7 nights (July/August) or 4 nights at other times.
- **Heating costs included?:** Yes.
- **Pool heating charge?:** Included. Please note that like all heated pools, pool heating and water temperature are reliant on weather and outside temperatures.
- **Tax:** French Visitors Tax payable to Oliver's Travels at the time of balance payment (typically costs €1-€10 per adult per night - please enquire if exact amount is required).
- **Pool towels included?:** Yes.
- **Pool opening dates?:** The pool is open approximately mid-May to mid-October. Please note that pool opening dates are subject to local weather conditions and pool maintenance requirements and that cooler months may not be suitable for swimming.