

Apartment Alberti

Region: Italy Sleeps: 6

Overview

Apartment Alberti is a refined retreat nestled within a historic Florentine palazzo, offering a harmonious blend of elegance and comfort. Located on the second floor and accessible by lift or a short flight of steps, this spacious residence features three serene double bedrooms and four beautifully appointed bathrooms, perfect for accommodating up to six guests in style. From the moment you enter, the apartment's refined design and original frescoes set a sophisticated tone, starting with the restful sitting room overlooking Via Mozza. Adorned in calming blues, this light-filled space features chequerboard parquet flooring, tall shuttered windows, and a captivating frescoed ceiling.

The heart of the home is the sun-drenched kitchen and dining room, warmed by terracotta tones and a decorative fireplace. A sleek, fully equipped kitchen and dining table for eight create an inviting setting for shared meals beneath ornate cornices and another frescoed ceiling. Along the private corridor, three tranquil en-suite bedrooms await, each uniquely styled with frescoed ceilings, rich textiles, and luxurious marble bathrooms. From the green-toned master suite with a walk-in closet to the peaceful blue-and-mauve canopied room overlooking a quiet courtyard, every corner of Apartment Alberti has been thoughtfully curated for rest and relaxation in the heart of Florence.

Facilities

Air-Con • City Homes & Apartments • Coffee Machine • Hairdryer • Historical Sites • Washing Machine • Wi-Fi/Internet • TV • Lift • Easy By Train • Ideal for Babies & Toddlers • Ideal for Kids • Ideal for Teens • Walk to Restaurant • <1hr to Airport • Tumble Dryer • Dishwasher • Microwave • Satellite TV • Heating • Outdoor Pursuit & Activities • Tourist Towns & Villages



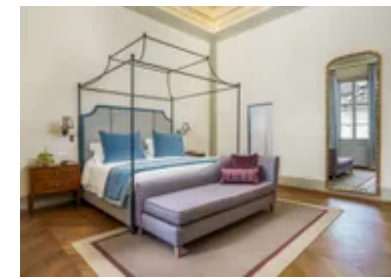
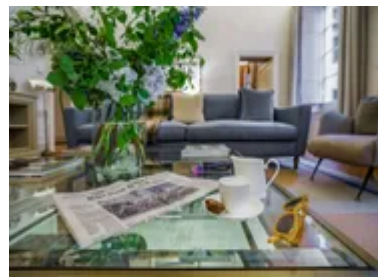
Interior & Grounds

Interior

- Sitting room with windows overlooking Via Mozza
- Spacious kitchen/dining room with a well-equipped kitchen area and dining suite for 8 guests
- Master bedroom with walk-in closet, and en-suite bathroom
- Second double bedroom with frescoed ceiling, double bed (convertible into twins), and en-suite bathroom
- Third double bedroom overlooking a quiet courtyard, featuring a canopied double bed and an en-suite bathroom
- Guest bathroom, equipped with a wash-hand basin, W.C., and a convenient washing machine/dryer

Additional Facilities

- Wi-Fi
- Air conditioning
- Heating
- Satellite TV
- Washing machine & Dryer
- Dishwasher



Location & Local Information

Apartment Alberti enjoys a prime location in the heart of Florence, nestled on the second floor of a grand palazzo in one of the city's most vibrant and historic neighbourhoods. Just steps from your door, the lively Via dei Benci invites you to experience authentic Florentine life, lined with artisanal boutiques, cosy cafés, and inviting trattorias that fill the air with the scents of freshly baked bread and simmering sauces.

Iconic landmarks are within easy walking distance, from the soaring dome of the Duomo to the world-class Uffizi Gallery and the storied halls of Palazzo Vecchio. Meander through Florence's atmospheric streets, cross the Arno via the picturesque Ponte Vecchio, or take in the views along the riverbanks. With convenient access to the train station and public transport, day trips to Tuscan gems like Siena or Pisa are simple. After a day of exploring, return to Apartment Alberti and unwind in elegant comfort as the sun sets over this timeless city.

Local Amenities

Nearest Airport	Florence Airport (13 km)
Nearest Bar/Pub	Angie's Pub (150 m)
Nearest Restaurant	La Buchetta Food & Wine Restaurant (30 m)
Nearest Supermarket	Conad City (160 m)
Nearest Train Station	Firenze Santa Maria Novella (2 km)
Sightseeing	Ponte (150 m)



What we love

- Apartment Alberti offers a hidden gem in the heart of an Italian palazzo, perfect for exploring the vibrant city of Florence!
- The main living area is enhanced by the presence of magnificent, frescoed ceilings, elevating the surroundings with a sense of grandeur!
- With beautifully decorated en-suites in all the bedrooms, the apartment provides you with the perfect spaces to unwind and indulge in self-care

What you should know...

- To ensure utmost convenience, the apartment includes a separate luxurious guest bathroom near the entrance
- If you are part of a larger group, there are several apartments within the palazzo that you can also rent
- The second bedroom can be set up with a double bed or two twins, depending on your preference

Terms & Conditions

- **Security deposit:** €1,000 charged to client's credit card before arrival and refunded two weeks after departure, subject to full inspection.
- **Arrival time:** 3 - 8 pm
- **Departure time:** 11 am
- **Energy costs included?:** Yes, included in the rental price.
- **Linen & towels included?:** Yes, included in the rental price.
- **Pets welcome?:** Not allowed.
- **Changeover day:** Flexible.
- **End of stay cleaning available?:** Not included in the rental price, extra €260 to be paid with the balance due.
- **Smoking Allowed?:** Smoking & Vaping are not permitted.
- **Minimum stay:** 3 - 5 nights, depending on the season. All other durations on request.
- **Heating costs included?:** Yes, included in the rental price.
- **Tax:** There is a city tax due to be paid locally which is not included in the rental rate. The amount will be confirmed by your onsite representative when you arrive.
- **Internet access?:** Wi-Fi internet access included.