

Chalet Delphy

Region: 3 Valleys Sleeps: 12

Overview

Chalet Les Bastidons is a beautifully refined mountain retreat in the prestigious Hameau de la Volière, just moments from the centre of Courchevel 1850. Spanning over 780 square metres and spread across five levels, this exceptional six-bedroom chalet blends contemporary Alpine style with first-class comfort and seamless ski-in/ski-out access to the Plantret piste.

Inside, warm timber tones and elegant furnishings create a luxurious yet inviting atmosphere. The main open-plan living area is bathed in natural light through floor-to-ceiling windows, opening onto a large balcony that frames sweeping mountain views. Guests can unwind beside the statement fireplace or gather around the spacious dining table after a day on the slopes, while a sleek, semi-professional kitchen ensures every meal is effortless.

For relaxation, the chalet's extensive wellness area rivals that of a private spa, complete with an indoor swimming pool, hammam, sauna, gym, and outdoor jacuzzi overlooking the snowy peaks. Entertainment flows through the home with a cinema, games room and dedicated lounge areas perfect for après-ski evenings.

Each of the six en-suite bedrooms provides an intimate haven of calm, with plush furnishings and modern amenities. Thoughtful design and high-end finishes throughout make Chalet Les Bastidons a flawless choice for families or friends seeking a luxurious Courchevel escape where world-class skiing, style and serenity meet in perfect balance.

Facilities



Ski Lift Nearby • Catered • Skiing • Hairdryer • Recommended • Ski Chalet • Wellness • Coffee Machine • Washing Machine • Wi-Fi/Internet • Lakes and Mountains • Walk To Slopes • Mountain View • Boot Heaters • Pool/Snooker • Lift • Maid Service Included • Walk to Village • Indoor Games • Cots (Cribs) • Chef/Cook Included • DVD • Games Room • Gym/Fitness Room • Private Pool • Instagrammable • Half Board • Transfers Available • On-Site Concierge • Breakfast Included • Indoor Pool • Ideal for Babies & Toddlers • Ideal for Kids • Ideal for Teens • Hot Tub • Walk to Restaurant • Tumble Dryer • Dishwasher • Microwave • Safety Deposit Box • All Bedrooms En-Suite • Smart TV • Sauna/Steam • Home Cinema • Working Fireplace/Woodburner • Heating • High Chair(s) • Parking Space • Outstanding Landscapes • Outdoor Pursuit & Activities

Interior & Grounds

The Chalet

Interiors

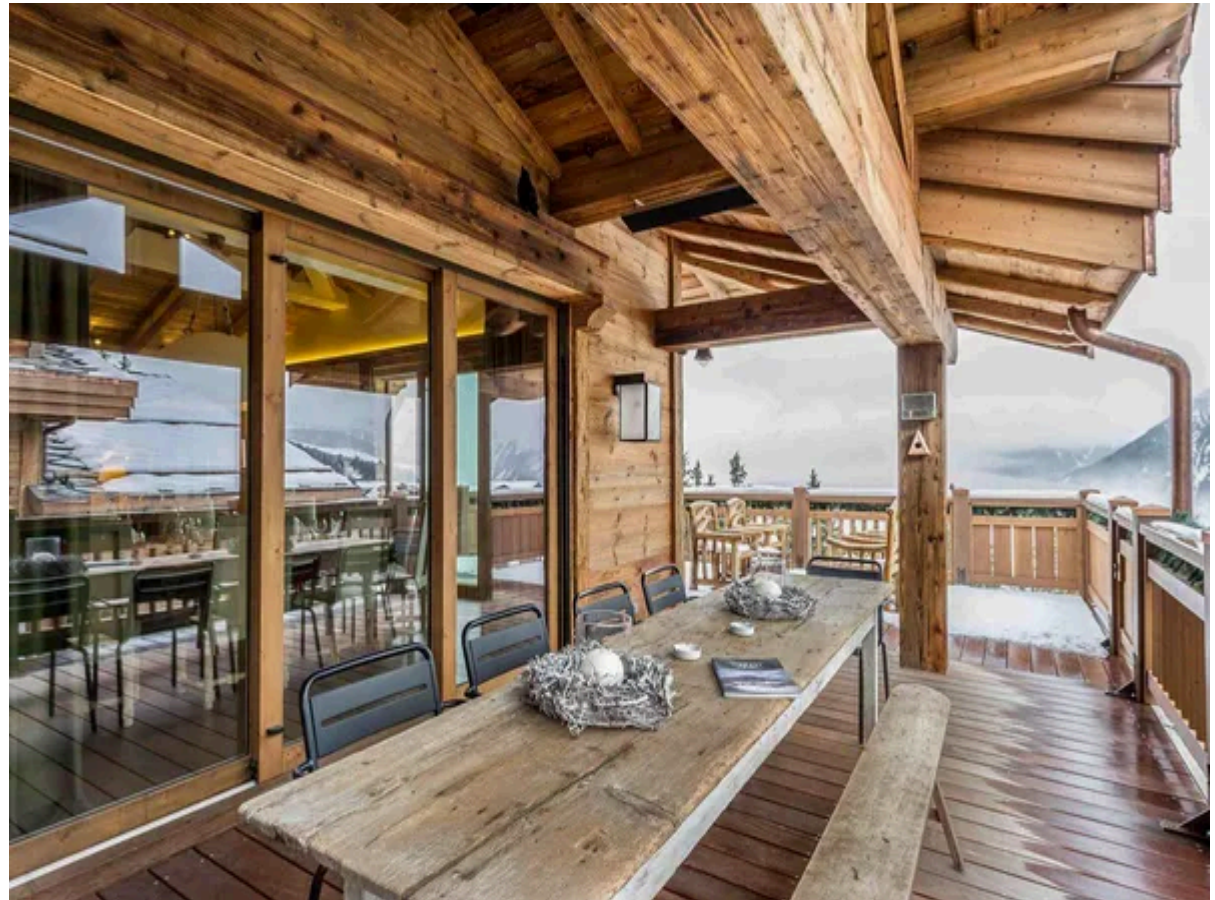
- Open living room
- Fireplace
- Semi-professional kitchen
- Dining room
- TV lounge
- Bedroom 1 (Master): Double bed, en-suite bathroom with bathtub and shower, dressing area, access to terrace
- Bedroom 2: Double bed, en-suite bathroom with shower, access to terrace
- Bedroom 3: Double bed, en-suite bathroom with shower, access to terrace
- Bedroom 4: Double bed, en-suite bathroom with shower
- Bedroom 5: Double bed, en-suite bathroom with shower
- Bedroom 6: Double bed, en-suite bathroom with shower
- Playroom
- Cinema room
- Game room
- 2 separate toilets
- Bar
- Relaxation area
- Hammam/Sauna
- Indoor jacuzzi and swimming pool
- Fitness room

Outside Grounds

- Terrace with jacuzzi

Additional Facilities

- Apple TV
- Printer
- DVD-Payer/ Blue-ray
- Boots heater
- Ski locker
- Piano
- Parking space
- Nespresso coffee machine
- refrigerate wine cellar
- Laundry facilities



- Fondue appliance
- Baby cot (on request)
- High chair (on request)

Location & Local Information

Tucked away in the exclusive Hameau de la Volière, Chalet Les Bastidons enjoys a prime ski-in/ski-out setting on the Plantret piste in Courchevel 1850. This peaceful enclave offers the best of both worlds — direct access to the slopes while remaining only moments from the stylish boutiques, Michelin-starred restaurants and vibrant après-ski of the resort centre.

Courchevel 1850 forms part of the legendary Trois Vallées ski domain, the largest interconnected ski area in the world, with over six hundred kilometres of perfectly groomed runs for all levels. From gentle greens and scenic blues to thrilling blacks, every skier and snowboarder finds their perfect route here.

Beyond the slopes, guests can discover snowshoe trails through pine forests, luxury spas, and a lively social scene that makes Courchevel a perennial winter favourite. Whether gliding straight from your door to the morning lift or returning to the chalet’s private spa after an afternoon exploring, Chalet Les Bastidons places you right at the heart of this alpine playground.

Local Amenities

Nearest Airport	Geneva Airport (137 km)
Nearest Airport	Lyon (187 km)
Nearest Bar/Pub	Le Bar de Madame (290 m)
Nearest Piste	Dou du Midi (20 m)
Nearest Restaurant	Restaurant le Genépi (290 m)
Nearest Ski Hire	Intersport (250 m)
Nearest Ski Lift	Plantrey (Via Dou du Midi piste) (300 m)



Nearest Supermarket	Carrefour Montagne (950 m)
Nearest Village	Courchevel 1850 (650 m)

What we love

- Chalet Delphy is the very definition of luxury and the services of the chef and butler meant we could truly relax on our holiday.
- The panoramic views of the snow-capped mountains are absolutely breathtaking, especially when enjoyed from the outdoor hot tub.
- Chalet Delphy boasts multiple social spaces including a games room, cinema, and TV lounge for cosy après-ski evenings

What you should know...

- While Chalet Delphy does have a dedicated staff on hand to support you during your visit, please note that they do not offer a 24-hour service.
- As Chalet Delphy is located in the heart of Courchevel, you may occasionally hear noise from other resort visitors in the evenings.
- Please ensure that children are supervised at all times when using the wellness facilities, and note that children under the age of five are recommended against using the hot tub and sauna/steam room.

Terms & Conditions

- **Security deposit:** Secure link sent to the client's email to fill in the details of the client's bank card online 2 weeks before the arrival for the amount of €20,000. This is in the form of a card authorisation, funds are not cashed
- **Arrival time:** Check-in 5.00 PM.
- **Departure time:** Check-out 10.00 AM.
- **Energy costs included?:** Yes, included in the rental price.
- **Linen & towels included?:** Yes, included in the rental price.
- **Pets welcome?:** Not allowed.
- **Other Ts and Cs:** Please note that rental of a cot and highchair is at an extra cost paid directly to the owner: Cot: 40€ per week Highchair: 30€ per week
- **Changeover day:** Saturday.
- **End of stay cleaning available?:** Yes, included in the rental price. However, guests are required to leave the accommodation clean, tidy and in the same condition as on their arrival. Any extra cleaning, laundry, maintenance and/or rubbish disposal required will be charged against the security deposit.
- **Smoking Allowed?:** Smoking & Vaping are not permitted.
- **Minimum stay:** 7 nights.
- **Heating costs included?:** Yes, included in the rental price.
- **Tax:** French Visitors Tax payable alongside balance (typically costs €1-€5 per adult per night- please enquire if exact amount is required).
- **Internet access?:** Wi-Fi internet access included.