

Chalet Cottin

Region: 3 Valleys **Sleeps:** 10

Overview

Hidden away in a quiet corner of Courchevel, Chalet Cottin is the epitome of luxury and charm in the French Alps. Offering a truly unforgettable experience, this enchanting chalet offers an extraordinary escape for those seeking an unforgettable winter retreat.

Upon arrival, you'll find that every inch of Chalet Cottin exudes elegance and sophistication thanks to its unique design by the famed architect Remi Giffon. The carefully crafted all-white interior creates an elegant and modern atmosphere, with careful touches throughout, paying homage to the chalet's Alpine heritage.

The chalet boasts a spacious, open living area surrounded by bright windows. You can relax and unwind on comfortable sofas gathered around a roaring fireplace and wall-mounted TV with international channels. On the outdoor terrace, admire the breathtaking panoramic views of the surrounding snow-capped mountains while relaxing in the bubbling hot tub.

Back indoors, you can release your inner chef in the fully equipped, state-of-the-art kitchen to create gourmet feasts and family favourites to share with your nearest and dearest. The adjacent dining area provides a perfect setting for enjoying these culinary delights, with its elegant table and comfortable seating.

For your sleeping arrangements, Chalet Cottin can comfortably accommodate up to ten guests across five luxuriously appointed bedrooms. Each bedroom is a sanctuary of comfort and style laid out in either a double or twin configuration and features luxurious bedding, soft furnishings, and private en-suite bathrooms.

After a day of skiing on the world-renowned slopes of Courchevel, retreat to the sanctuary that is your own private wellness area for some well-deserved pampering. Immerse yourself in the inviting indoor hot tub or steam your cares away in the state-of-the-art sauna.

The chalet itself is ideally situated in the heart of Courchevel, providing convenient access to the vibrant village and its abundance of high-end boutiques, gourmet restaurants, and lively après-ski scene. As for winter activities, you'll find yourself just steps away from the slopes with endless opportunities for skiing, snowboarding, and other thrilling winter activities.



Facilities

Walk to Village • Ski Lift Nearby • Walk To Slopes • Wellness • Ski Chalet
• Ideal for Xmas/NY • Self-Catered • Skiing • Ski-In/Ski-Out •
Walking/Hiking Paths • Ideal for Kids • Cots (Cribs) • Ideal for Teens • Maid

Service Included • Modern • Walk to Restaurant • Parking Space • Wi-Fi/Internet • Lakes and Mountains • Washing Machine • Outstanding Landscapes • Coffee Machine • Outdoor Pursuit & Activities • Tourist Towns & Villages • TV • Indoor Games • Hot Tub • Tumble Dryer • Dishwasher • Microwave • Sauna/Steam • Working Fireplace/Woodburner • Heating • Kid-friendly excursions • Breakfast Included • Ideal for Babies & Toddlers • High Chair(s)

Interior & Grounds

The Chalet

Interiors

- Interior design by Remi Giffon
- Open-plan living/dining space
- Three twin-style en-suite bedrooms
- One double en-suite bedroom
- A large master bedroom with private balcony access
- Ethanol fire
- Modern, fully-equipped kitchen
- Indoor hot tub
- Traditional sauna
- Ski room with heated boot warmers

Outside Grounds

- Large outdoor space
- Dedicated parking space
- Large terrace
- Outdoor seating
- Outdoor dining area
- Outdoor hot tub

Additional Facilities

- Wifi
- Boots heater
- Safe
- Sky TV
- International channels
- DVD/Blu-ray player
- Board game library
- Slippers
- Fondue appliance
- Baby cot (on request)
- High chair (on request)



Location & Local Information

Nestled amidst the majestic peaks of the French Alps, Chalet Cottin is perfectly positioned in the world-renowned Alpine paradise of Courchevel. From its idyllic location, Chalet Cottin offers not only breathtaking natural beauty all around you but also a seemingly unending array of activities and attractions to explore.

Starting your holiday off on the right foot is simple and straightforward as Chalet Cottin is conveniently situated within driving distance of several international airports. Geneva, Lyon, Chamberly, and Grenoble are all within a three-hour drive and offer regular transfer services to the Courchevel resort. For a more laid-back journey to the mountain, private transfers are also available, or you can make arrangements for a rental vehicle.

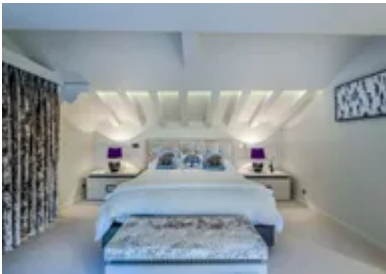
Once you arrive, you'll find yourself immersed in a winter wonderland like no other. Courchevel is renowned for its world-class ski slopes, and with Chalet Cottin as your base, you'll have access to the sprawling Three Valleys ski area in no time at all.

Beyond skiing, Courchevel offers a wealth of activities to suit every taste such as ice skating with your family on the outdoor rink in the heart of the village, snowmobiling through the pristine mountain forests, or hurtling down the Olympic-style toboggan run for an unforgettable winter experience.

When not skiing, explore the charming village of Courchevel with its picturesque streets and traditional Alpine architecture to discover local craftsmanship at artisan boutiques, where you can find unique souvenirs and gifts to remember your stay. Indulge in the exquisite cuisine of the region at one of the resort's many gourmet restaurants or delightful local eateries.

Local Amenities

Nearest Airport	Geneva Airport (185 km)
Nearest Airport 2	Lyon Airport (183 km)
Nearest Village	Courchevel 1650 (Moriond) (550 m)
Nearest Restaurant	Le Petit Savoyard (450 m)
Nearest Bar/Pub	Le Catérail (2.3 km)
Nearest Piste	Belvedere (0 m)
Nearest Supermarket	Carrefour Montagne (950 m)



Nearest Ski Hire	Sport 2000 Gilbert Sports le Marquis (350m)
Nearest Ski Lift	Ariondaz (100m)

What we love

- The views of the snow-covered forest and mountains from the chalet were absolutely stunning.
- The chalet's private wellness area was an oasis of tranquillity that left us feeling completely refreshed and rejuvenated after each visit.
- Chalet Cottin's location was perfect for families as the convenient ski-in, ski-out access let us effortlessly hit the slopes each day.

What you should know...

- Chalet Cottin is spread over multiple levels without elevator access which may not be suitable for guests with mobility issues.
- While the chalet provides a serene atmosphere, Courchevel is a popular resort so you may occasionally hear noise from neighbouring chalets and passers-by.
- Please note that children under the age of five are advised against using the hot tubs and older children should be supervised at all times when doing so.

Terms & Conditions

- **Security deposit:** €12000 paid via bank transfer to the owner 30 days before arrival and refunded two weeks after departure, subject to full inspection.
- **Arrival time:** Check-in 5.00 PM
- **Departure time:** Check-out 10.00 AM
- **Energy costs included?:** Yes, included in the rental price
- **Linen & towels included?:** Yes, included in the rental price
- **Pets welcome?:** Not allowed
- **Changeover day:** Saturday
- **End of stay cleaning available?:** Yes and daily cleaning during stay. However, guests are required to leave the accommodation clean, tidy and in the same condition as on their arrival. Any extra cleaning, laundry, maintenance and/or garbage disposal required will be charged against the security deposit
- **Smoking Allowed?:** Smoking & Vaping are not permitted
- **Minimum stay:** 7 nights
- **Heating costs included?:** Yes, included in the rental price
- **Tax:** French Visitors Tax payable alongside balance (typically costs €1-€5 per adult per night- please enquire if exact amount is required)
- **Internet access?:** Wi-Fi internet access included