

Apartment Guilia

Region: Megeve Sleeps: 4

Overview

Just a short stroll away from the fairytale town centre of Megève, Apartment Guilia is a contemporary two-bedroom property with a warm and cosy ambience, surrounded by idyllic Alpine scenery. Located on the first floor of a mountain residence near the Chamois gondola, the apartment provides guests with easy access to the stunning slope of Rochebrune, as well as the link to the Mont d'Arbois ski area. Featuring a welcoming living space with a wood-burning stove and a private balcony with enchanting vistas, Apartment Guilia is the perfect place to enjoy a restful and rejuvenating retreat with your loved ones in the fresh mountain air of Megève.

Begin each day by sipping a cup of freshly brewed coffee on the apartment's secluded balcony, soaking up the morning sunshine and enjoying the gentle Alpine breeze. Upon entering from the balcony, guests will find a charming living space, featuring a welcoming lounge area with wood panelling, a flatscreen TV and understated décor that perfectly encapsulates the effortless natural beauty of the surrounding area. The warm glow of the wood-burning stove further enhances the apartment's relaxed ambience, inviting guests to curl up and unwind after an invigorating day on the slopes. Everyone can gather together to discuss the day's adventures over a delicious meal in the dining area, while a fully equipped kitchen provides you with everything you might need to prepare a home-cooked feast using the fresh local produce you have discovered.

Apartment Guilia also offers two delightful bedrooms, both of which provide guests with a calm and restful atmosphere. The first bedroom features a double bed, a chest of drawers, a wardrobe and a timber-clad ceiling, as well as an en-suite bathroom with a bath and a shower. The second bedroom is a cute and cosy twin room with a



wardrobe and an en-suite bathroom featuring a bath and a shower.

With a fabulous setting in a sought-after location near the centre of the town, Apartment Guilia is a peaceful property with understated furnishings and relaxed home comforts, offering you and your loved ones an authentic Alpine experience in beautiful Megève.

Facilities

Lakes and Mountains • Washing Machine • TV • Coffee Machine • Self-Catered • Skiing • Wi-Fi/Internet • Walk to Village • Great Value • Cots (Cribs) • Chalet Apartment • Ideal for Babies & Toddlers • Ideal for Kids • Ideal for Teens • Walk to Restaurant • Dishwasher • Microwave • Working Fireplace/Woodburner • Heating • High Chair(s) • Parking Space • Outstanding Landscapes • Outdoor Pursuit & Activities

Interior & Grounds

The Apartment

Interiors

- Lounge area with wood-burning stove
- Dining area
- Fully equipped kitchen
- Double bedroom
- Twin bedroom
- Two en-suite bathrooms

Outside Grounds

- Private balcony

Additional Facilities

- WiFi
- Private parking space
- Ski locker
- Raclette machine
- Heating
- Flatscreen TV
- Dishwasher
- Microwave
- Coffee machine
- Highchair (on request)
- Baby cot (on request)
- Ironing facilities



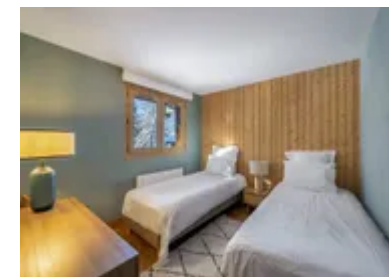
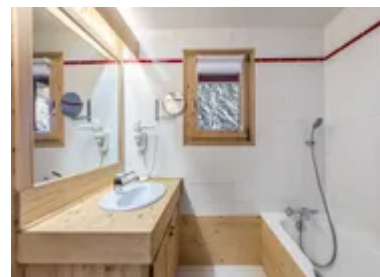
Location & Local Information

Nestled in the heart of the Alps, the renowned ski resort of Megève perfectly encapsulates the authentic charm of the Évasion Mont-Blanc ski area. Offering breathtaking scenery, the resort effortlessly exudes a feeling of laidback luxury. With a treasure trove of exceptional facilities and outdoor activities to enjoy throughout the year, Megève delights visitors time and time again with its picturesque Alpine meadows, dense forests and majestic mountain vistas.

Megève offers its visitors three primary ski areas, encompassing 325km of pistes in total. Apartment Guilia boasts an enviable location, with the nearby Chamois gondola providing direct access to the slopes of Rochebrune. Rochebrune is home to meandering green and gentle blue pistes, making this a particularly fun area for beginner and intermediate skiers and snowboarders. For those in search of more challenging runs, a network of blue and red slopes will provide plenty of adrenaline-fuelled action on sunny afternoons.

Visitors to the slopes of Rochebrune can access the stunning Mont d'Arbois via a cable car that connects both ski areas, offering scenic views of the snowy valley below. From the top of Mont d'Arbois, there is a variety of pistes running in several directions, with slopes to suit all levels of experience. The third of Megève's ski areas is Le Jaillet, where visitors will find links to the slopes of La Giettaz and Combloux, as well as off-piste options for very advanced skiers.

With a wide-ranging selection of well-established ski schools and an expansive network of slopes, the Megève resort caters for everyone, from first-time novices to seasonaires. Freestylers can work on developing confidence in their tricks by visiting the terrain parks in Rochebrune or at the top of the Jaillet cable car, while advanced skiers in search of steeper runs can make their way to the Côte 2000 or Mont Joly. Nearby Les Contamines also offers plenty of exciting options when it comes to challenging terrain.



Foodies and those in search of culinary delights will be thrilled to find a wide array of fabulous French restaurants dotted across the charming old town of Megève and its surrounding resort. Enjoy a hearty lunch on a sun-soaked terrace, after a morning spent skiing in the fresh mountain air. Megève offers a myriad of après-ski options for visitors to enjoy, ranging from cosy mountain inns to lively bars located in the vibrant town centre. For something a little different, indoor activities such as spa treatments and wine tastings make for indulgent and memorable evening experiences. The town also boasts a large sports complex with an outdoor pool that is open during the summer months, as well as enchanting streets lined with high-end shops and the beautiful Place de l'Eglise at its heart.

Boasting a magical mountain backdrop and spectacular views of Mont Blanc, Megève is the ideal destination for those in search of timeless elegance and a traditional French atmosphere, whatever the season.

Local Amenities

Nearest Airport	Geneva Airport (88.1 km)
Nearest Airport 2	Lyon Airport (170 km)
Nearest Town/City	Megève (450 m)
Nearest Restaurant	La Table du Trappeur (260 m)
Nearest Bar/Pub	LE TIGRR PALACE (450m)
Nearest Piste	Capucine (270 m)
Nearest Supermarket	Carrefour Montagne (500 m)
Nearest Ski Hire	Chamois Sports location ski Megève (400m)
Nearest Ski Lift	Chamois (400m)

What we love

- We adored Apartment Guilia's spectacular location near the Chamois gondola, which meant we never missed a moment on the slopes!
- We still dream about sipping a freshly brewed cup of coffee on the apartment's private balcony, with picture-perfect Alpine vistas.
- We loved relaxing with a well-earned glass of wine by the warm glow of the apartment's wood-burning stove, after an afternoon spent outdoors in the fresh mountain air.
- We loved the laidback and sophisticated après-ski scene in Megève, which offers plenty of opportunities to unwind in style.

What you should know...

- Apartment Guilia accommodates up to four guests in total.
- The apartment is located approximately 350m from the centre of Megève.
- We recommend that young children remain supervised whilst playing on the balcony.

Terms & Conditions

- **Security deposit:** €2,500, paid via bank transfer to the owner 30 days before arrival and refunded two weeks after departure, subject to full inspection.
- **Arrival time:** Check-in 5.00 PM
- **Departure time:** Check-out 10.00 AM
- **Energy costs included?:** Yes, included in the rental price
- **Linen & towels included?:** Yes, included in the rental price
- **Pets welcome?:** Not allowed
- **Changeover day:** Saturday
- **End of stay cleaning available?:** Yes (except kitchen). However, guests are required to leave the accommodation clean, tidy and in the same condition as on their arrival. Any extra cleaning, laundry, maintenance and/or rubbish disposal required will be charged against the security deposit
- **Smoking Allowed?:** Smoking & Vaping are not permitted
- **Minimum stay:** 7 nights
- **Heating costs included?:** Yes, included in the rental price
- **Tax:** French Visitors Tax payable alongside balance (typically costs €1-€5 per adult per night- please enquire if exact amount is required).
- **Internet access?:** Wi-Fi internet access included