

Apartment Bijou

Region: Megeve Sleeps: 4

Overview

Tucked within the elegant Résidence Stallion in Megève's desirable Rochebrune area, Apartment Bijou offers a serene base for four guests looking to savour the rhythm of mountain life year-round. Bright, modern interiors blend understated Alpine design with the comfort of home, creating a calm retreat after days on the slopes or summer trails.

The open-plan living space enjoys access to a private covered balcony, perfect for a quiet morning coffee as the sun lifts over the peaks, or an easygoing après-ski moment beneath the evening sky. Inside, a welcoming lounge, dining area and fully equipped kitchen make gatherings effortless, while soft neutral tones and natural textures echo the landscape outside.

Two restful double bedrooms, each with an en-suite bathroom, provide privacy and ease. The master bedroom opens directly onto the balcony and includes a sleek walk-in shower and laundry facilities, while the second features a bath and shower, ideal for relaxing after a day in the fresh mountain air.

Guests enjoy access to the residence's superb wellness area, complete with an indoor pool, sauna and gym, as well as private garage parking and a ski locker. With Rochebrune's lifts nearby and the heart of Megève only a short stroll away, Apartment Bijou invites you to unwind, explore and experience this charming Alpine destination in every season; from snow-covered slopes in winter to sunlit meadows and mountain hikes in summer.

Facilities



Bus/Shuttle To Slopes • Wellness • Self-Catered • Skiing • Walk to Village
• Ideal for Kids • Ideal for Teens • Special Offer • Has Discount • Great
Value • Cots (Cribs) • Pets on Request • Indoor Pool • Modern • Shared
Pool • Walk to Restaurant • Parking Space • Wi-Fi/Internet • Lakes and
Mountains • Chalet Apartment • Outstanding Landscapes • Coffee
Machine • Hairdryer • Outdoor Pursuit & Activities • Tourist Towns &
Villages • TV • Lift • Gym/Fitness Room • Dishwasher • Microwave •
Sauna/Steam • Kid-friendly excursions • Ski Locker • Bathroom Toiletries
• Ideal for Babies & Toddlers • High Chair(s)

Interior & Grounds

The Apartment

Interior

- Open-plan living area with balcony access, sofa, dining table and flatscreen TV
- Fully equipped kitchen
- Master Bedroom: double bed, balcony access, en-suite bathroom with walk-in shower and laundry facilities
- Bedroom 2: double bed (configurable as twin on request), en-suite bathroom with bathtub and shower

Outside Grounds

- Covered balcony with outdoor seating and mountain views
- Private garage parking space
- Ski locker

Additional Facilities

- Wi-Fi
- Elevator
- Ski locker
- Flatscreen TV
- Dishwasher
- Microwave
- Coffee machine
- Shared access to the residence's wellness area with indoor swimming pool, sauna and gym
- Hairdryer
- Heating
- Baby cot and high chair (on request and subject to an extra charge)
- Washing machine (in master en-suite)
- Shuttle to slopes nearby



Location & Local Information

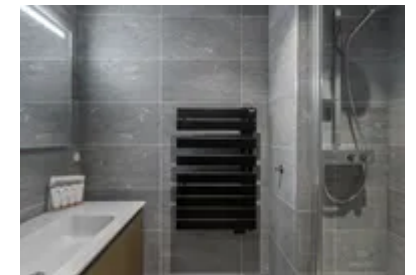
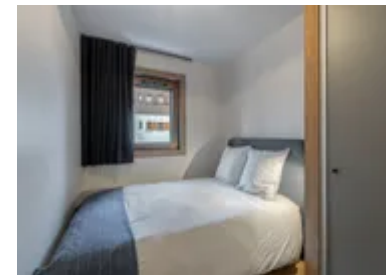
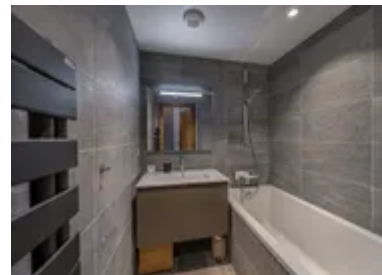
Apartment Bijou enjoys a peaceful position in Megève's sought-after Rochebrune area, just moments from the village centre and its charming boutiques, cafés and restaurants. The Rochebrune cable car is only a short walk or quick shuttle ride away, providing effortless access to Megève's vast Évasion Mont-Blanc ski domain, which offers over 300 kilometres of slopes spanning gentle beginner runs and exhilarating red trails. Ski schools and hire shops nearby make it easy for families and friends to get out and explore the snow-covered mountains.

Beyond the pistes, Megève's cobbled streets and welcoming après-ski scene capture the essence of traditional French Alpine life. Visitors can spend leisurely afternoons discovering local delicacies, browsing artisanal stores, or relaxing at a cosy wine bar as the sun sets behind Mont Blanc.

When summer arrives, Rochebrune transforms into a haven for outdoor enthusiasts. Scenic hiking and mountain biking trails wind through wildflower meadows, while golf, paragliding and horse riding offer a new way to experience the valley's spectacular scenery. From its tranquil yet connected setting, Apartment Bijou is perfectly placed for those seeking both the adventure and the quiet beauty that define Megève throughout the seasons.

Local Amenities

Nearest Airport	Geneva (88 km)
Nearest Airport	Lyon (167 km)
Nearest Bar/Pub	Bar le S Megève (1.6 km)
Nearest Piste	Capucine (750 m)
Nearest Restaurant	La Table du Trappeur (1.3 km)



Nearest Ski Hire	Henry Sports Megeve à Rochebrune (800 m)
Nearest Ski Hire	Intersport Megève (800 m)
Nearest Ski Lift	Petit Rochebrune (800 m)
Nearest Ski Lift	Grand Champs (800 m)
Nearest Supermarket	Le Petit Casino (1.4 km)
Nearest Village	Megève (1.6 km)

What we love

- The apartment has year-round appeal as you can ski in winter and in summer you can hike or bike amid the stunning Mont Blanc scenery
- The peaceful location in the sought-after Rochebrune area, close to the village centre and ski lifts is perfect for those looking for a quiet retreat away from the hustle and bustle.
- We adored the residence's fabulous shared wellness zone, a great place to unwind and ease your sore muscles after a day exploring the surrounding area.
- The bright open-plan living space ideal for relaxing or socialising after a day outdoors

What you should know...

- Apartment Bijou is located approximately 1.5km from the centre of Megève. This is walkable but why not make use of the local bus connections.
- We recommend that young children remain supervised whilst playing near the balcony and when in the shared wellness area within the residence
- As with most Alpine properties in the winter, snow chains and winter tyres are a must during snowy periods

Terms & Conditions

- **Security deposit:** Secure link sent to the client's email to fill in the details of the client's bank card online 2 weeks before the arrival for the amount of €1500. This is in the form of a card authorisation, funds are not cashed
- **Arrival time:** Check-in 5.00 PM
- **Departure time:** Check-out 10.00 AM
- **Energy costs included?:** Yes, included in the rental price
- **Linen & towels included?:** Yes, included in the rental price
- **Pets welcome?:** One pet is permitted on request only and with prior agreement with the owner. If accepted, a pet supplement of €100 will apply.
- **Other Ts and Cs:** Please note that rental of a cot and highchair is at an extra cost paid directly to the owner: Travel cot: 70€ per week Wooden baby crib: 200€ per week Highchair: 50€ per week
- **Changeover day:** Saturday
- **End of stay cleaning:** A light clean (emptying bins, dishwasher and wiping down surfaces) is included at the end of the stay. Guests are required to leave the accommodation clean, tidy and in the same condition as on their arrival. Any extra cleaning, laundry, maintenance and/or rubbish disposal required will be charged against the security deposit.
- **Smoking Allowed?:** Smoking & Vaping are not permitted
- **Minimum stay:** 7 nights
- **Heating costs included?:** Yes, included in the rental price
- **Tax:** French Visitors Tax payable alongside balance (typically costs €1-€5 per adult per night- please enquire if exact amount is required)
- **Internet access?:** Wi-Fi internet access included