

# Apartment Andrea

**Region:** 3 Valleys   **Sleeps:** 4

---

## Overview

Apartment Andrea offers a warm and welcoming base for guests seeking an effortless winter escape in the heart of Courchevel Moriond. This modern two bedroom apartment sits within easy walking distance of the village centre and the snowy front de neige, placing the slopes, ski lift and ski school only around sixty metres from your door. Its position makes it a convenient choice for families and small groups who want to maximise their time on the mountain and enjoy the lively winter atmosphere of the resort.

Inside, the apartment feels calm and well organised, with an open plan layout that brings together the living, dining and kitchen areas. The soft seating and flat screen TV create a relaxed spot to rest after a day on the pistes, while large windows allow natural light to fill the room. The kitchen is fully equipped for simple winter meals at home and includes thoughtful touches such as a fondue and raclette set for enjoying classic Savoyard dishes together.

The apartment comfortably sleeps four guests across two bedrooms. The double bedroom benefits from an ensuite shower room, while the separate bunk room is ideal for children and has access to an independent bathroom and a separate WC. Both rooms provide a restful environment to recharge before another day outdoors. A small balcony offers fresh air and a glimpse of the surrounding winter scenery.

Practical features including a ski locker, boot heaters, Wi Fi, parking space and lift access help make your stay smooth and stress free. With its central position and well planned interior, Apartment Andrea provides an appealing home base for a winter holiday in Courchevel Moriond.

## Facilities

Ideal for Kids • Skiing • Mountain View • Walking/Hiking Paths • Walk to Village • Self-Catered • Walk To Slopes • Boot Heaters • Ski School Nearby • Ski Lift Nearby • Cots (Cribs) • Pets on Request • Ideal for Teens • Modern • Parking Space • Walk to Restaurant • Wi-Fi/Internet • Lakes and Mountains • Chalet Apartment • Outstanding Landscapes • Coffee Machine • Outdoor Pursuit & Activities • Tourist Towns & Villages • TV • Lift • DVD • Dishwasher • Microwave • Safety Deposit Box • Kid-friendly excursions • Ski Locker • Bathroom Toiletries • High Chair(s)



# Interior & Grounds

## The Apartment (50 sqm)

### *Interiors*

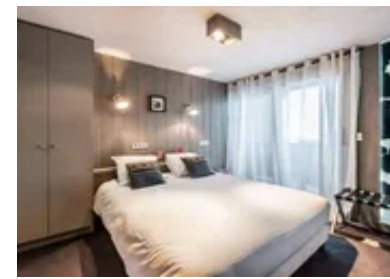
- Living room
- Dining area
- Open plan, fully equipped kitchen
- Bedroom 1: Double bed (160x200cm), ensuite bathroom with shower
- Bedroom 2: Bunk beds (90x200cm), access to independent bathroom with shower, separate WC

### *Outside Grounds*

- External balcony
- Parking space
- Ski locker

### **Additional Facilities**

- TV with international channels
- DVD/Blu-ray player
- Wi-Fi
- Boots heater
- Lift
- Coffee machine
- Dishwasher
- Fondue appliance
- Raclette machine



# Location & Local Information

Apartment Andrea enjoys an exceptional position in Courchevel Moriond, placing guests just moments from the heart of the action. The snow front, ski lift and nearest piste are all around sixty metres away, creating an effortless start to every ski day. Whether you are joining lessons, meeting friends on the slopes or simply eager to make the most of fresh morning snow, the apartment's close proximity ensures you spend more time skiing and less time getting organised.

Courchevel Moriond is known for its welcoming atmosphere and excellent access to the wider Three Valleys, offering a huge variety of pistes for all skill levels. The village centre is only a short stroll from the apartment and provides everything you need throughout your stay. You will find equipment hire shops, a local supermarket, bakeries and a number of inviting restaurants and bars, including L'Ecorce which sits just a few steps away.

Winter visitors can also enjoy gentle walks, snowshoe routes and the impressive mountain scenery that surrounds the resort. With the slopes on your doorstep and all essential amenities close at hand, Apartment Andrea is perfectly placed for a smooth and enjoyable winter stay in Courchevel Moriond.

## Local Amenities

Nearest Airport	Geneva Airport (141 km)
Nearest Airport	Lyon Airport (183 km)
Nearest Bar/Pub	Bon rencontre (30 m)
Nearest Piste	Belvedere (60 m)
Nearest Restaurant	Carné - Restaurant & Bar (Le C 4*) (95 m)
Nearest Restaurant	Copliŕa Courchevel (240 m)
Nearest Ski Hire	Sport 2000 Gilbert Sports La Résidence (10 m)
Nearest Ski Hire	Precision Ski Courchevel 1650 (180 m)
Nearest Ski Lift	Ariondaz (60 m)



Nearest Supermarket	<b>Carrefour Montagne (140 m)</b>
Nearest Village	<b>Courchevel Moriond (1650) (100 m)</b>



## What we love

- The children's bunk room is a great fit for younger skiers.
- The dedicated ski storage with a ski locker and boot warmer is great for easy morning starts.
- Apartment Andrea's location is perfect, just a short walk from the lifts, restaurants and bars of Courchevel Moriond.

## What you should know...

- Apartment Andrea is located in the centre of Courchevel, so you will likely experience noise from other guests and residual resort noise on occasion.
- The area around the apartment can be steep, uneven and icy in the height of winter which may not be suitable for guests with mobility issues. Please make sure you take care when exploring
- While Apartment Andrea can sleep up to four guests, the bunk beds may not be suitable for adults.

# Terms & Conditions

- **Security deposit:** Secure link sent to the client's email to fill in the details of the client's bank card online 2 weeks before the arrival for the amount of €800. This is in the form of a card authorisation, funds are not cashed
- **Arrival time:** Check-in 5.00 PM
- **Departure time:** Check-out 10.00 AM
- **Energy costs included?:** Yes, included in the rental price
- **Linen & towels included?:** Yes, included in the rental price
- **Pets welcome?:** One pet is permitted on request only and with prior agreement with the owner. If accepted, a pet supplement of €100 will apply.
- **Other Ts and Cs:** Please note that rental of a cot and highchair is at an extra cost paid directly to the owner: Cot: 40€ per week Highchair: 30€ per week
- **Changeover day:** Saturday
- **End of stay cleaning available?:** Yes, included in the rental price. However, guests are required to leave the accommodation clean, tidy and in the same condition as on their arrival. Any extra cleaning, laundry, maintenance and/or garbage disposal required will be charged against the security deposit
- **Smoking Allowed?:** Smoking & Vaping are not permitted
- **Minimum stay:** 7 nights
- **Heating costs included?:** Yes, included in the rental price
- **Tax:** French Visitors Tax payable alongside balance (typically costs €1-€5 per adult per night- please enquire if exact amount is required)
- **Internet access?:** Wi-Fi internet access included