

Chalet Severi

Region: 3 Valleys Sleeps: 10

Overview

Nestled in the heart of charming Saint-Martin-de-Belleville, Chalet Severi offers the perfect setting for a truly luxurious Alpine escape. Blending traditional Savoyard character with modern elegance, this chalet provides a warm, welcoming retreat for families and groups seeking both adventure and relaxation in the mountains.

From the outside, Chalet Severi enchants with its authentic façade, while inside, you'll find stylish interiors designed for comfort and conviviality. The spacious living area features plush sofas, a roaring fireplace, and sweeping mountain views through large picture windows. Step out onto the expansive terrace to soak up the breathtaking scenery, or gather indoors for cozy evenings with friends and family. The adjoining open-plan kitchen is fully equipped with top-of-the-line appliances, offering everything you need to prepare delicious meals, while the elegant dining area invites guests to linger over shared feasts.

With five beautifully appointed en-suite bedrooms, Chalet Severi can host up to ten guests in refined comfort. Each room is thoughtfully designed with soft linens and Alpine-inspired décor, ensuring restful nights after days spent exploring the slopes.

For ultimate relaxation, the chalet's private wellness area awaits. Soothe tired muscles in the sauna and hammam, creating the perfect end to an exhilarating day on the mountain.

Ideally located, Chalet Severi is just a short stroll from the heart of Saint-Martin-de-Belleville. Here, you'll discover a wealth of local charm, from artisan shops and cozy cafés to celebrated restaurants. With ski lifts only moments away, this chalet is an exceptional base for skiers and non-



skiers alike, promising an unforgettable holiday in the French Alps.

Facilities

Ski Lift Nearby • Bus/Shuttle To Slopes • Walk To Slopes • Wellness • Ski Chalet • Self-Catered • Skiing • Ideal for Kids • Ski-In/Ski-Out • Walk to Village • Ideal for Teens • Special Offer • Has Discount • Maid Service Available • Cots (Cribs) • Instagrammable • Modern • Walk to Restaurant • Parking Space • Wi-Fi/Internet • Lakes and Mountains • Washing Machine • Outstanding Landscapes • Coffee Machine • Outdoor Pursuit & Activities • Tourist Towns & Villages • TV • Indoor Games • Tumble Dryer • Dishwasher • Microwave • Sauna/Steam • Home Cinema • Working Fireplace/Woodburner • Heating • Bathroom Toiletries • High Chair(s)

Interior & Grounds

The Chalet

Level 0:

- Wellness area with Sauna and Hammam
- Garage
- Ski room with boot heater
- Laundry room
- Lobby

Level 1:

- Bedroom 1: Double bed with ensuite shower, double handsink and toilet
- Bedroom 2: Double bed with ensuite bath, sink and toilet
- Bedroom 3: Two single beds with ensuite shower, double handsink and toilet

Level 2:

- TV Lounge
- Bedroom 4: Double bed with ensuite bath, double handsink and toilet
- Bedroom 5: Double bed with ensuite shower, double handsink and toilet

Level 3:

- Living room
- Dining room
- Open plan kitchen
- Balcony
- Terrace
- Fireplace

Additional Facilities

- Wi-Fi
- Bluetooth speaker
- Boardgames
- Juice squeezer
- Fondue appliance
- Microwave and oven combination
- Nespresso coffee machine
- Bean to cup coffee machine
- Laundry facilities
- Safety deposit box



Location & Local Information

Chalet Severi enjoys a privileged setting in the picturesque village of Saint-Martin-de-Belleville, right in the heart of the French Alps. This traditional mountain village combines authentic charm with world-class access to one of the most celebrated ski regions in the world.

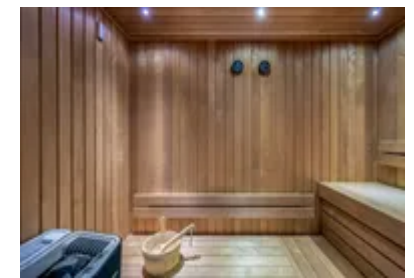
Reaching Saint-Martin-de-Belleville is simple and flexible. With Geneva and Lyon-Saint Exupéry airports are both around two hours away, Chalet Severi is a great place to call home for those ski getaways. Guests can arrange private transfers or car rentals with ease for a seamless journey. For those travelling by train, the station at Moutiers lies only 30 minutes from the village, making onward travel by taxi or car straightforward.

Once you arrive, the beauty and character of Saint-Martin-de-Belleville quickly become apparent. Traditional wooden chalets, cobbled lanes, and welcoming eateries create an atmosphere that feels both timeless and inviting. Wander through its charming streets, browse local boutiques, or pause at a café to sample regional delicacies, from hearty Savoyard favourites to exquisite cheeses and pastries.

Skiers are especially well catered for here. Saint-Martin-de-Belleville is part of the legendary Three Valleys ski domain, offering over 600km of interconnected pistes. From gentle slopes ideal for beginners to challenging descents for seasoned skiers, the variety is unmatched.

Beyond skiing, the region provides a wealth of winter activities. Snowshoeing and cross-country trails showcase the tranquillity of the alpine landscape, while horse-drawn sleigh rides through the forest add a touch of magic. For those seeking relaxation, nearby wellness centres and spas provide the perfect opportunity to unwind with soothing treatments after a day in the mountains.

Local Amenities



Nearest Airport	Geneva Airport (137 km)
Nearest Airport	Lyon Airport (182 km)
Nearest Bar/Pub	Pourquoi Pas (220 m)
Nearest Piste	Piste du Village (200 m)
Nearest Restaurant	Le Montagnard (120 m)
Nearest Ski Hire	Magasin 3 Vallées Ski Location (150 m)
Nearest Ski Hire	Skiset Togosports (280 m)
Nearest Ski Lift	Village (drag lift) (230 m)
Nearest Ski Lift	Saint Martin 1 (700 m)
Nearest Supermarket	Huit à huit (220 m)
Nearest Town/City	Saint-Martin-de-Belleville (240 m)

What we love

- The breathtaking mountain views from the chalet's panoramic windows were second to none.
- The luxurious and stylish interior design made us feel like we were living in a magazine-worthy chalet.
- Chalet Severi's location is simply amazing, providing easy access to the ski lifts and village centre.

What you should know...

- Chalet Severi is spread across several floors without elevator access which may be unsuitable for guests with limited mobility.
- The village of Saint-Martin-de-Belleville, while charming, is quiet and does not have a bustling nightlife scene compared to larger ski resort towns.
- As Chalet Severi is located in the heart of Saint-Martin-de-Belleville, you may occasionally hear noise from the road or other visitors in the village.

Terms & Conditions

- **Security deposit:** Secure link sent to the client's email to fill in the details of the client's bank card online 2 weeks before the arrival for the amount of €7,000. Funds won't be taken or blocked on the credit card in this case.
- **Arrival time:** Check-in 5.00 PM
- **Departure time:** Check-out 10.00 AM
- **Energy costs included?:** Yes, included in the rental price
- **Linen & towels included?:** Yes, included in the rental price (winter only)
- **Pets welcome?:** Not allowed
- **Other Ts and Cs:** Cot and highchair are available on request at an additional cost – please enquire for further details.
- **Changeover day:** Saturday
- **End of stay cleaning:** Standard changeover clean (winter only) included in the price. Guests are required to leave the accommodation clean, tidy and in the same condition as on their arrival. Any extra cleaning, laundry, maintenance and/or rubbish disposal required will be charged against the security deposit.
- **Smoking Allowed?:** Smoking & Vaping are not permitted
- **Minimum stay:** 7 nights
- **Heating costs included?:** Yes, included in the rental price
- **Tax:** French Visitors Tax payable alongside balance (typically costs €1-€5 per adult per night- please enquire if exact amount is required).
- **Internet access?:** Wi-Fi internet access included