

Apartment Rolland

Region: 3 Valleys Sleeps: 6

Overview

Perfectly placed for families, Apartment Rolland is a chic alpine retreat right in the heart of Courchevel Village. Just ten metres from the nearest slope and ski lifts, you'll be whisked straight into the world's largest ski area, where pistes of every colour await. Courchevel is especially loved by families, offering a kindergarten and ski school close by, making it the ideal base for both beginners and seasoned skiers.

This stylish apartment combines the charm of a traditional chalet with a contemporary edge. Designed for up to six guests, it features three beautifully appointed bedrooms, complimentary Wi-Fi, and a private ski locker. Inside, the décor is understated yet elegant, with pale woods, sleek furnishings, and a soft palette of whites and greys.

A welcoming hallway leads you into a bright open-plan living space, where floor-to-ceiling windows frame sweeping mountain views. Step out onto the balcony to soak up the snowy scenery or enjoy cosy evenings indoors with a plush sofa, armchairs, and a flat-screen TV. The modern kitchen is fully equipped with everything you could need, from quality appliances to that all-important coffee maker, while the dining area invites relaxed suppers around a six-seater table with quirky mismatched chairs.

When it's time to rest, the master bedroom offers a queen-size bed and a sleek en-suite with walk-in shower. A second double bedroom comes with handcrafted fitted wardrobes, while little ones will adore the playful bunk room. A shared family shower room and a separate WC complete the thoughtful layout.

Apartment Rolland is a haven of comfort and style, perfectly located for families or friends eager to make the most of Courchevel's slopes and atmosphere, with everything you need right on your doorstep.

Facilities

Ski Lift Nearby • Walk To Slopes • Self-Catered • Skiing • Ski-In/Ski-Out • Ideal for Kids • Ideal for Teens • Pets on Request • Modern • Walk to Restaurant • Wi-Fi/Internet • Lakes and Mountains • Chalet Apartment • Outstanding Landscapes • Outdoor Pursuit & Activities • Tourist Towns & Villages • TV • Dishwasher • Microwave • Heating • Transfers Available • Ski Locker



Interior & Grounds

The Apartment

Interior (56sqm)

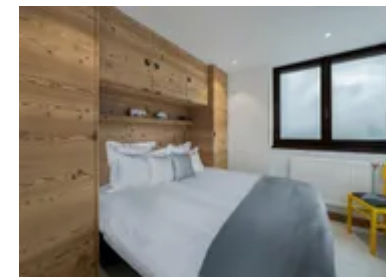
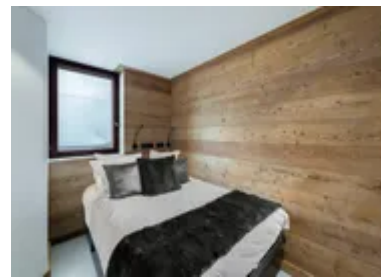
- Open plan living area with access to mountain view balcony
- 1 sofa, 2 armchairs, glass coffee table, flat screen TV
- Fully equipped modern kitchen
- Bedroom 1: Queen size bed, ensuite shower room with hand basin, WC, heated towel rail
- Bedroom 2: Double bed, built-in wardrobes
- Bunk room: Cabin size with set of bunk beds for 2 children, wardrobes
- Bathroom with shower and hand basin
- Separate WC

Outside Grounds

- Mountain view balcony
- Ski locker

Additional Facilities

- Wi-Fi
- Dishwasher
- Fridge
- 6str dining set
- TV
- Fridge
- Electric hobs
- Oven
- Baby cot and high chair (on request)
- Parking space (on request)



Location & Local Information

Apartment Rolland enjoys a prime spot in Courchevel Village, overlooking the snow-dusted peaks of the French Alps. Getting here is simple, with Geneva, Lyon, Chambéry and Grenoble airports all within three hours. From there, private transfers, shuttles or even a helicopter can bring you into resort in style.

At 1550m, Courchevel Village is the most peaceful of the Trois Vallées resorts and is famed for its family-friendly feel. Wooden chalets line the streets, while shops, bakeries and a weekly market selling local cheeses and cured meats provide all the essentials. A tourist office, ski school and kindergarten are just steps away, making it a wonderfully convenient base for families.

From your front door it's only ten metres to the nearest slope and lifts, connecting you with over 600km of pistes across the Trois Vallées. Beyond skiing, the village offers plenty of ways to unwind, from the apartment's own gym and spa to the nearby Aquamotion complex with its pools and water fun. For more variety, ride the gondola to explore Courchevel 1850's luxury boutiques, enjoy horse-drawn sleigh rides, or take to the skies paragliding over the peaks.

As night falls, Courchevel Village comes alive with welcoming bars and restaurants serving French favourites and international flavours.

Local Amenities

Nearest Airport	Geneva Airport (137 km)
Nearest Bar/Pub	Le Catérail (280 m)
Nearest Piste	Front de Neige (10 m)
Nearest Restaurant	La Chapelle 1550 (210 m)



Nearest Ski Hire	Skiset - Courchevel Village (60 m)
Nearest Ski Lift	Tovets (10 m)
Nearest Supermarket	Proxi (290 m)

What we love

- We love how stylish Apartment Rolland is – classic chalet meets contemporary chic, very clever!
- The bathrooms at Apartment Rolland are state of the art, superbly-appointed walk-in shower rooms, perfect for a refreshing hot shower after a day's skiing
- The magnificent mountain views, snowcapped in winter, verdant green in summer, never fail to please
- We love how central Apartment Rolland is to the action, within ten metres of the nearest ski slope and lift, and in the heart of the village for apres ski activities or enjoying the amazing local cuisine

What you should know...

- The cabin bunk bed room may not be suitable for adults
- There is an ensuite shower room, and a shared shower room and toilet for the other four guests
- Apartment Rolland is situated in the heart of the village, which may get busy at peak times, however, Courchevel Village is considered a quiet and calm location

Terms & Conditions

- **Security deposit:** Secure link sent to the client's email to fill in the details of the client's bank card online 2 weeks before the arrival for the amount of €1000. Funds won't be taken or blocked on the credit card in this case.
- **Arrival time:** Check-in 5.00 PM.
- **Departure time:** Check-out 10.00 AM.
- **Energy costs included?:** Yes, included in the rental price.
- **Linen & towels included?:** Yes, included in the rental price.
- **Pets welcome?:** Yes, on request only and with prior agreement with the owner at a cost of 100€.
- **Changeover day:** Saturday.
- **End of stay cleaning available?:** Yes and scheduled cleaning on request (additional charge). However, guests are required to leave the accommodation clean, tidy and in the same condition as on their arrival. Any extra cleaning, laundry, maintenance and/or garbage disposal required will be charged against the security deposit.
- **Smoking Allowed?:** Smoking & Vaping are not permitted.
- **Minimum stay:** 7 nights.
- **Heating costs included?:** Yes, included in the rental price.
- **Tax:** French Visitors Tax payable alongside balance (typically costs €1-€5 per adult per night- please enquire if exact amount is required).
- **Internet access?:** Wi-Fi internet access included.