

Apartment Lea

Region: 3 Valleys **Sleeps:** 5

Overview

For the ultimate in Alpine comfort and convenience, look no further than Apartment Lea, a beautifully appointed two-bedroom apartment in the heart of Courchevel.

Set against a beautiful mountain backdrop, this charming apartment is the epitome of comfort, style, and convenience. As you step inside, you'll be greeted by a warm and inviting atmosphere, perfectly complemented by its modern decor and traditional Alpine touches.

The spacious living area is the perfect spot to rest and relax with family and friends, with a large L-shape sofa and charming dining area gathered around a wall-mounted flat-screen TV for entertainment. Natural light floods in through large windows, illuminating every corner of the apartment and inviting you to relish in the stunning mountain panoramas that surround you.

Beside the living area is a lovely, fully-equipped kitchen perfect for crafting delicious meals for your nearest and dearest.

When night falls, retreat to two cosy bedrooms where soft, fluffy beds promise a restful night's sleep. The apartment can comfortably accommodate up to five guests, with one room offering a double bed and the other offering a set of bunk beds and an additional pull-out bed.

In terms of location, Apartment Lea is fabulous for mixed groups who equally enjoy spending time in the charming Alpine village of Courchevel as well as hitting the slopes as much as possible. At Apartment Lea, you're just a short walk away from the ski lifts that will have you whisked away to an extensive network of slopes across the Three Valleys. Whether you're an adrenaline junkie seeking the most challenging runs or a novice eager to learn, Courchevel has something to offer everyone.

When not on the slopes, the village centre is just steps away from Apartment Lea's entrance, where you'll be able to sample delicious local cuisine, shop the latest winter fashions, top up with essentials at the mini market, or enjoy a coffee at one of the quaint cafes.

Facilities

Lakes and Mountains • Wi-Fi/Internet • Lift • DVD • Walk to Village • Cots (Cribs) • Chalet Apartment • Kid-friendly excursions • Transfers Available • Self-Catered • Ideal for Babies & Toddlers • Ideal for Kids • Ideal for Teens • Walk to Restaurant • Washing Machine • Dishwasher • Microwave • Coffee Machine • TV • Heating • High Chair(s) • Walking/Hiking Paths • Skiing • Outstanding Landscapes • Outdoor Pursuit & Activities • Tourist Towns & Villages



Interior & Grounds

Apartment Interior

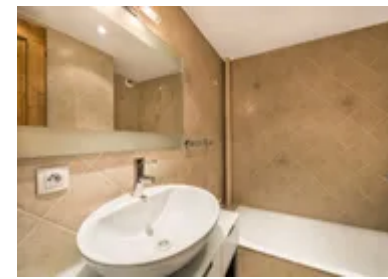
- Living room
- Dining room
- Open kitchen
- Double bedroom with folding bed (140 x 190), wardrobe, TV and DVD player
- Double bedroom with bunk bed (90 x 190), pull out bed (90 x 190) and wardrobe
- Separate WC
- Independent bathroom with bathtub, towel dryer, hairdryer and single hand basin

Outside Grounds

- Ski locker

Additional Facilities

- Bathroom products
- Reception in agency
- Elevator
- DVD player/Blu-ray
- TV
- Wi-fi
- Baby cot and high chair (on request)
- Coffee machine
- Dishwasher
- Fondue appliance
- Freezer
- Fridge
- Induction hobs
- Iron
- Ironing board
- Kitchen exhaust hood
- Microwave & oven combination
- Nespresso coffee machine
- Raclette machine
- Toaster
- Vaccum
- Washing machine



Location & Local Information

Nestled amidst the snow-capped peaks and picturesque landscapes of Courchevel, Apartment Lea boasts an enviable location that promises a truly unforgettable winter experience.

Accessing this Alpine paradise to start your holiday off is a breeze, with the apartment conveniently situated within a three-hour drive of several major airports like Geneva and Lyon. For those arriving by car, a scenic drive through the stunning French Alps will lead you to the heart of Courchevel, while those transferring from the airport will be able to hop on a shared shuttle or book a private taxi with ease.

Once in Courchevel, you'll be greeted by a myriad of exciting activities and attractions to try out during your stay. Winter sports enthusiasts will be in their element, with the world-class ski slopes of the Three Valleys right at their doorstep.

Beyond skiing, there's still plenty waiting to be explored. Embark on a thrilling sledding adventure through the surrounding forests, where a team of huskies will take you on an unforgettable tour of the area.

For those seeking a taste of traditional alpine culture, head to the village centre, where you can stroll through the cobbled streets lined with quaint boutiques, eateries, and cosy cafes. Indulge in the region's delicious Savoyard cuisine like fondue, raclette, and tartiflette or toast to a well-deserved break at one of the trendy apres-ski bars dotted around the resort.

Local Amenities

Nearest Airport	Geneva Airport (188km)
Nearest Airport 2	Lyon Airport (186km)
Nearest Town/City	Courchevel 1850 (190m)
Nearest Restaurant	Restaurant La Saulire (210m)
Nearest Bar/Pub	Au planté de bâton (350m)
Nearest Piste	Tovets (10m)
Nearest Supermarket	Carrefour Montagne (150m)
Nearest Ski Lift	Front de Neige / Snow Front (250m)



Nearest Ski Hire	White Storm Courchevel 1850 (220m)
------------------	---------------------------------------

What we love

- We loved how spacious Apartment Lea was - Even when we were all indoors, the space never felt crowded.
- We couldn't have asked for a better location than Apartment Lea, everything we needed was just a short walk away.
- The mountain views from the apartment's large windows were nothing short of amazing.

What you should know...

- Apartment Lea does not offer on-site parking, so you'll need to make separate parking arrangements if you are planning to drive to the apartment.
- The area around Apartment Lea can be steep and uneven in places which may not be suitable for guests with mobility issues.
- As Apartment Lea is located in the centre of the resort, you may hear noise from other visitors on occasion.

Terms & Conditions

- **Security deposit:** Secure link sent to the client's email to fill in the details of the client's bank card online 2 weeks before the arrival for the amount of €1000. Funds won't be taken or blocked on the credit card in this case.
- **Arrival time:** Check-in 5.00 PM.
- **Departure time:** Check-out 10.00 AM.
- **Energy costs included?:** Yes, included in the rental price.
- **Linen & towels included?:** Yes, included in the rental price.
- **Pets welcome?:** Not allowed.
- **Changeover day:** Saturday.
- **End of stay cleaning available?:** Yes (except kitchen) and scheduled cleaning on request (additional charge). However, guests are required to leave the accommodation clean, tidy and in the same condition as on their arrival. Any extra cleaning, laundry, maintenance and/or garbage disposal required will be charged against the security deposit.
- **Smoking Allowed?:** Smoking & Vaping are not permitted.
- **Minimum stay:** 7 nights.
- **Heating costs included?:** Yes, included in the rental price.
- **Tax:** French Visitors Tax payable alongside balance (typically costs €1-€5 per adult per night- please enquire if exact amount is required).
- **Internet access?:** Wi-Fi internet access included.