

Apartment Kante

Region: 3 Valleys Sleeps: 8

Overview

Tucked amongst the snowy peaks of the French Alps, this upscale residence enjoys a central location, whilst picturesque views and a cosy atmosphere make it the perfect place to enjoy a luxurious and peaceful escape.

Part of a newly built development in the centre of Courchevel Village, Apartment Kante enjoys a hotel quality service, with an on-hand reception and concierge, whilst the self-contained space assures a luxury yet independent experience.

Unfolding into a series of bright rooms, the apartment has been carefully decorated with contemporary furnishings and stylish artworks that create an elevated tone, whilst warm tones and wooden floors throughout offer a cosy atmosphere. A central living area enjoys plenty of natural light, with large openings giving spectacular views out to the snow-capped mountains. To one side, a seating area invites you to relax in comfort, whilst to the front of the room, double doors open out to a charming balcony, where you can sit with a hot chocolate and enjoy the fresh alpine air.

A neat kitchen can be found to the rear, fully equipped for preparing meals throughout your stay, whilst a rectangular dining table invites you to sit with family and friends and share tasty home-cooked classics.

The apartment features three splendid bedrooms, each immaculately presented with wooden accents and large double beds that assure a restful night's sleep. Each of the rooms enjoys a delightful ensuite, and there is an additional guest toilet for convenience.



Facilities

Ski Lift Nearby • Walk To Slopes • Self-Catered • Skiing • Ski-In/Ski-Out • Ideal for Kids • Ideal for Teens • Cots (Cribs) • Modern • Parking Space • Walk to Restaurant • Wi-Fi/Internet • Lakes and Mountains • Chalet Apartment • Washing Machine • Outstanding Landscapes • Coffee Machine • Hairdryer • Outdoor Pursuit & Activities • Tourist Towns & Villages • Spa/Massage • TV • Gym/Fitness Room • Tumble Dryer • Dishwasher • Microwave • Sauna/Steam • Heating • Transfers Available • High Chair(s)

Interior & Grounds

The Apartment

Apartment Interior

- Living room with convertible sofa bed
- Dining area
- Open kitchen
- First bedroom with double bed and ensuite bathroom with shower
- Second bedroom with double or twin beds and ensuite bathroom with bathtub
- Third bedroom with double bed and ensuite bathroom with shower
- Additional WC

Outside Grounds

- Balcony

Additional Facilities

- Toiletries
- Linen and towels
- Elevator
- Ski locker
- TV
- Wifi
- Ceramic hobs
- Coffee machine
- Dishwasher
- Fondue appliance
- Fridge
- Iron
- Ironing board
- Baby cot and highchair (upon request)
- Slippers
- Fitness room with sauna and massage suite



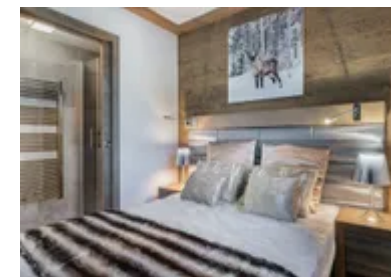
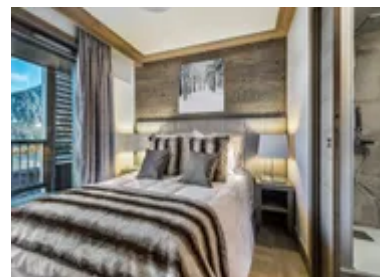
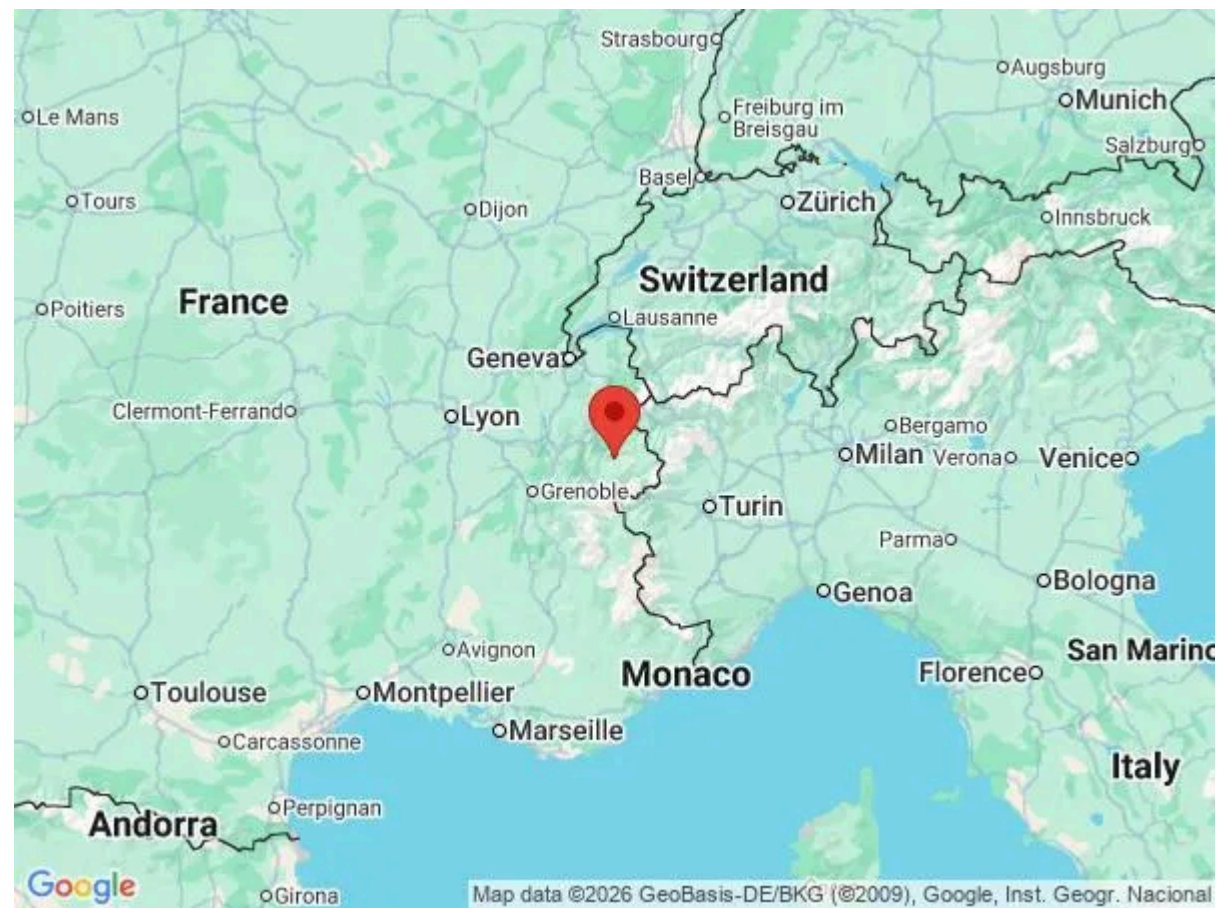
Location & Local Information

Nestled in the centre of Courchevel Village, Apartment Kante enjoys a superior position within France's spectacular Vanoise massif. Also known as 1550 (after its altitude), the Village has a laid-back and friendly atmosphere, a mix of traditional chalets and modern hotels, whilst local restaurants and hire shops dot the narrow streets. Less than 50m from the apartment, the Grangettes Gondola waits to transport you up to the resort's central lifts, where you can head off and explore the scenic mountain terrain.

Forming part of the Trois Vallées, Courchevel has a global reputation, with an impressive network of pistes to suit all abilities. Topping out at 2740m, the mostly north-facing slopes offer some of the finest powder in the world, and with daily grooming and an efficient lift system, there is plenty of opportunity to ski from dawn til dusk. At the top of the Saulire cable car, Grand Couloir is one of the steepest pistes in the Alps, or get up early to cut through the first snow on the Combe Saulire. A number of challenging blacks present varying conditions or hire a guide to head off-piste and unlock the valley's full potential. For those just starting out, Courchevel is an equally great resort, with large nursery areas and a series of dedicated beginner zones where you can develop confidence.

For non-skiers, purchase a pedestrian lift pass to enjoy the mountain setting, discover the area's many hiking trails, or simply stop at a slope-side restaurant to enjoy lunch in the sun. Accessed by a gondola from Moriond, Le Bel Air is a true classic, serving up wonderful Savoyard cuisine, which you can enjoy at one of the outdoor tables, whilst Le Pilatus offers an authentic charm and a spectacular view of Mont Blanc. Run by local brothers, La Cave des Creux is also a lovely spot with a well-put-together brasserie menu that makes the most of locally sourced produce.

For those looking to relax, a free shuttle runs to Aquamotion, where you can take a swim in the pool or



soak tired muscles in a snow-lined jacuzzi. A wellness section invites you to indulge in a sauna or visit one of the local hotels where you can access some of the most exclusive spas in France.

The French Alps are also a treat during the summer months, with wild grasses and vibrant flowers springing up on the mountainside. Most of the lifts still operate during the season, enabling you to access the extensive network of hiking trails. Challenging downhill routes make the area popular with mountain bikers, or have a go at Via Ferrata and scale the rocky faces helped along by bridges and ladders.

Local Amenities

Nearest Airport	Lyon-Saint Exupéry Airport (181km)
Nearest Airport 2	Geneva Airport (137km)
Nearest Town/City	Courchevel (2.8km)
Nearest Restaurant	Bar Pizzeria - La Corto (350m)
Nearest Bar/Pub	Le Catérail (190m)
Nearest Piste	Proveres (20m)
Nearest Ski Hire	INTERSPORT - COURCHEVEL VILLAGE (240m)
Nearest Ski Lift	Grangettes (20m)

What we love

- Located in Courchevel's center, Apartment Kante is just moments from the lifts and slopes, whilst being just a short walk to an assortment of restaurants and amenities.
- With splendid views of the mountains, guests can wake up to the sight of idyllic snowy peaks, or sit out on the balcony and enjoy a mug of hot chocolate whilst soaking up the fresh alpine air.
- Part of a newly built residence, the Apartment Kante benefits from the developments services, as well as having access to a shared fitness suite where guests can enjoy a massage room and sauna.

What you should know...

- Guests have free access to the residence's fitness area and there is a shuttle to the aquatic centre nearby.
- Whilst Courchevel is well-serviced by public transport, the apartment has 1 private parking space in the underground garage.
- For additional guests, the sofas in the living room will be converted into sofa beds.

Terms & Conditions

- **Security deposit:** Secure link sent to the client's email to fill in the details of the client's bank card online 2 weeks before the arrival for the amount of €1500. Funds won't be taken or blocked on the credit card in this case.
- **Arrival time:** Check-in 5.00 PM.
- **Departure time:** Check-out 10.00 AM.
- **Energy costs included?:** Yes, included in the rental price.
- **Linen & towels included?:** Yes, included in the rental price.
- **Pets welcome?:** Not allowed.
- **Changeover day:** Saturday.
- **End of stay cleaning available?:** Yes, except the kitchen and mid-stay cleaning. Also, scheduled cleaning on request (additional charge). However, guests are required to leave the accommodation clean, tidy and in the same condition as on their arrival. Any extra cleaning, laundry, maintenance and/or garbage disposal required will be charged against the security deposit.
- **Smoking Allowed?:** Smoking & Vaping are not permitted.
- **Minimum stay:** 7 nights.
- **Heating costs included?:** Yes, included in the rental price.
- **Tax:** French Visitors Tax payable alongside balance (typically costs €1-€5 per adult per night- please enquire if exact amount is required).
- **Internet access?:** Yes, Wi-Fi and internet included in rental price.