

# Apartment Pansy

Region: 3 Valleys    Sleeps: 8

---

## Overview

Situated in the midst of the French Alps, this stunning modern apartment is the perfect place to spend a relaxing break with family and friends, enjoying hotel-like services and home comforts whilst being just moments away from the slopes. Part of a newly built residence, Apartment Pansy sits in the centre of Courchevel village, whilst its elevated position affords breathtaking views over the surrounding rooftops and out to the snowy peaks. Well-designed, the apartment is immaculately presented, with light oak flooring and exposed stone walls that offer a natural warmth whilst reflecting the alpine setting. Cosy and inviting, the rooms have been thoughtfully decorated with contemporary lighting and stylish furniture that add a sense of understated elegance.

An open-plan living room sits to the centre, flooded with natural light through a series of openings that frame views out to the majestic Dent du Villard. To one side, a series of sofas and armchairs provide a comfortable place to sit, inviting you to curl up with a book or watch a movie, whilst a large dining table is perfect for sharing entertaining evenings. To the rear of the room, a neat kitchen is well-equipped with modern fittings, and you can have a go with the fondue maker and enjoy a traditional alpine dinner. Several double doors open onto a balcony space, perfect for taking in the fresh mountain air, and you can sit out in the morning and sip on a coffee whilst admiring the picturesque view.

With four generous bedrooms, there is plenty of space to accommodate everyone, and two of the rooms feature delightful ensuite bathrooms. A third bedroom gives the option of double or twin beds, whilst the fourth room is fitted with bunk beds, perfect for children or additional guests.



Whilst enjoying the privacy of an apartment, guests can also benefit from the building's shared amenities, and for those looking to maintain their routine, a fitness suite can be found on the lower floor. There is a ski locker in the basement, ideal for storing wet ski gear, and the apartment also has a dedicated parking spot in the residence's underground garage.

## Facilities

Ski Lift Nearby • Walk To Slopes • Self-Catered • Skiing • Ideal for Kids • Ski-In/Ski-Out • Walk to Village • Cots (Cribs) • Ideal for Teens • Modern • Walk to Restaurant • Parking Space • Wi-Fi/Internet • Lakes and Mountains • Chalet Apartment • Washing Machine • Outstanding Landscapes • Coffee Machine • Outdoor Pursuit & Activities • Spa/Massage • Tourist Towns & Villages • TV • Gym/Fitness Room • Tumble Dryer • Dishwasher • Safety Deposit Box • Sauna/Steam • Heating • Transfers Available • High Chair(s)

# Interior & Grounds

## The Apartment

### Interior

- Living room
- Dining room
- Open kitchen
- First bedroom with double bed and ensuite with bathtub
- Second bedroom with bunk bed
- Third bedroom with double or twin beds
- First bedroom with double bed and ensuite with shower
- Separate WC

### Outside Grounds

- Balcony
- Underground car park

### Additional Facilities

- Underground car park
- Toiletries
- Linen and Towels
- Elevator
- Ski locker
- TV
- Wi-fi
- Ceramic hobs
- Coffee machine
- Dishwasher
- Fondue appliance
- Fridge
- Iron
- Baby cot and highchair (upon request)
- Safe
- Hairdryer



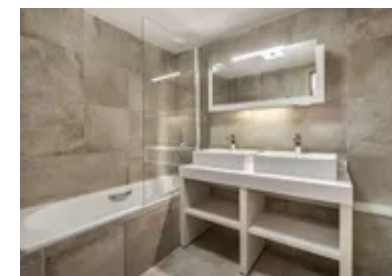
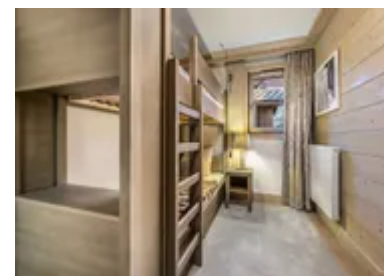
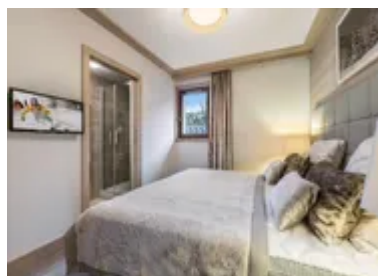
## Location & Local Information

Situated in the midst of Courchevel Village, Apartment Pansy enjoys a wonderful position, with a handful of local shops and restaurants a short walk along the road. Imbued with a calmer and more laid-back atmosphere than some of the higher districts, the Village enjoys a clear view across the eastern slopes whilst less than 50m from the apartment, the Grangettes Gondola will transport you to the central lifts, where you can head off and explore the valleys diverse terrain.

Being part of the Trois Vallées, Courchevel offers the ultimate resort with a superb selection of pistes suited to all abilities. Set over five distinct villages, the varied topography is served by an efficient lift system inviting you to explore nearly 150km of skiable area. For those just starting out, several nursery slopes and beginner zones are great for developing your confidence, whilst more seasoned skiers can head up the mountain to discover more challenging runs. Sitting at the top of the resort, the signature Combe Saulire offers the most reliable snow in the Trois Vallées, or spend a day cutting through powder and take an off-piste tour, gliding through the scenic pines and exploring less trodden paths.

After a morning on the slopes, you'll certainly work up an appetite, and there is no shortage of places to stop for a mountainside lunch. Sample the best of Savoyard cuisine at Le Bel Air, where you can enjoy a hearty French classic, whilst La Cave des Creux is a popular spot with splendid views of the Mont Blanc. Run by local brothers, the menu celebrates the best of the region's ingredients with a typical brasserie-style menu, and you can sit out on the terrace and share delicious plates whilst admiring the awe-inspiring view. For the evening, Les Verdons has live music and a buzzing atmosphere, or head to Le Caterail to dance along with the DJ late into the night. Whilst the majority of the nightlife can be found in 1850, the gondola runs until 00.30, making it easy to enjoy some drinks before heading back down to the Village.

For white-out days or those looking for a break from the



slopes, there are numerous other wonderful activities to be enjoyed. Grab a pedestrian lift pass and explore the scenic hiking trails, wandering beneath the snow-dusted pines, or hop on a sledge and be guided along by a pack of huskies. An impressive Luge track runs from Moriond, offering a more adrenaline-filled afternoon, or if it's raining, you can jump on the free shuttle and head along to Aquamation. Set within an iconic, wave-shaped building, the centre offers both indoor and outdoor pools, and you can relax in the warm water, soaking tired muscles or enjoying an indulgent hammam.

## Local Amenities

Nearest Airport	<b>Lyon-Saint Exupéry Airport</b> (181km)
Nearest Airport 2	<b>Geneva Airport</b> (137km)
Nearest Town/City	<b>Courchevel</b> (2.8km)
Nearest Restaurant	<b>Bar   Pizzeria - La Corto</b> (350m)
Nearest Bar/Pub	<b>Le Catérail</b> (190m)
Nearest Piste	<b>Proveres</b> (20m)
Nearest Ski Hire	<b>INTERSPORT - COURCHEVEL VILLAGE</b> (240m)
Nearest Ski Lift	<b>Grangettes</b> (20m)
Nearest Supermarket	<b>Carrefour Montagne</b> (1.7km)

## What we love

- Enjoying an elevated position, Apartment Pansy offers breathtaking views out to the Dent du Villard and you can sit on the balcony and enjoy a coffee whilst admiring the snowy peaks.
- Thoughtfully furnished, the apartment embodies an understated elegance, with stylish decor and light oak flooring that echoes the alpine setting whilst creating a warm and cozy space.
- Centrally located, Apartment Pansy is moments from the ski lifts, whilst being an easy walk to wonderful assortment of local restaurants and bars.

## What you should know...

- Whilst Courchevel is well-serviced by public transport, the apartment has 1 private parking space in the underground garage.
- Being on the 3rd floor, the building is serviced by an elevator and there is a ski locker in the basement to store all of your kit.
- The apartment contains a variety of room formations, but please be aware, as is common in ski resorts, one of the rooms contains bunk beds.

# Terms & Conditions

- **Security deposit:** Secure link sent to the client's email to fill in the details of the client's bank card online 2 weeks before the arrival for the amount of €2000. Funds won't be taken or blocked on the credit card in this case.
- **Arrival time:** Check-in 5.00 PM.
- **Departure time:** Check-out 10.00 AM.
- **Energy costs included?:** Yes, included in the rental price.
- **Linen & towels included?:** Yes, included in the rental price.
- **Pets welcome?:** Not allowed.
- **Changeover day:** Saturday.
- **End of stay cleaning available?:** Yes, except the kitchen and scheduled cleaning on request (additional charge). However, guests are required to leave the accommodation clean, tidy and in the same condition as on their arrival. Any extra cleaning, laundry, maintenance and/or garbage disposal required will be charged against the security deposit.
- **Smoking Allowed?:** Smoking & Vaping are not permitted.
- **Minimum stay:** 7 nights.
- **Heating costs included?:** Yes, included in the rental price.
- **Tax:** French Visitors Tax payable alongside balance (typically costs €1-€5 per adult per night- please enquire if exact amount is required).
- **Internet access?:** Yes, Wi-Fi and internet included in rental price.