

Apartment Cyclamen

Region: 3 Valleys Sleeps: 8

Overview

Apartment Cyclamen offers a smart and comfortable base in the heart of Courchevel Village, placing you close to the slopes and within easy reach of the lifts that link into the wider Three Valleys. Set within a modern residence, the apartment delivers a warm and practical retreat after active days in the mountains.

The living area is bright and well proportioned, framed by large windows that look toward the surrounding peaks. Soft timber tones and stone detailing give the space a calm alpine feel, paired with simple, modern furnishings that keep everything relaxed. The balcony provides a spot to enjoy the fresh air, while inside the seating area is ideal for unwinding with a drink after skiing. The kitchen is neatly equipped for everyday cooking, including useful extras such as a Nespresso machine, and the dining table has plenty of room for shared meals and easy evenings together.

Four ensuite bedrooms are arranged to offer a straightforward and restful layout for a group of up to eight. Each bedroom features a double bed and its own bathroom. The main suite includes a bathtub that is welcome at the end of a long ski day.

The residence facilities add to the appeal. Guests have access to a shared fitness room, sauna and steam room, giving you options for recovery or gentle training during your stay. There is a ski locker for storing equipment and three underground parking spaces which are very helpful in peak season.

Apartment Cyclamen suits guests seeking a convenient and comfortable base with strong access to Courchevel's slopes, shops and dining, all within a simple walk from the door.



Facilities

Ski-In/Ski-Out • Ski Lift Nearby • Ski School Nearby • Walk To Slopes • Ideal for Xmas/NY • Self-Catered • Skiing • Walking/Hiking Paths • Walk to Village • Ideal for Kids • Cots (Cribs) • Pets on Request • Ideal for Teens • All Bedrooms En-Suite • Modern • Parking Space • Walk to Restaurant • Wi-Fi/Internet • Lakes and Mountains • Chalet Apartment • Outstanding Landscapes • Coffee Machine • Outdoor Pursuit & Activities • Tourist Towns & Villages • TV • Lift • Garage • Gym/Fitness Room • Dishwasher • Microwave • Sauna/Steam • Heating • Ski Locker • Bathroom Toiletries • High Chair(s)

Interior & Grounds

The Apartment

Living Area

- Balcony
- Open-plan fully fitted kitchen
- Dining Area

Floor Plan

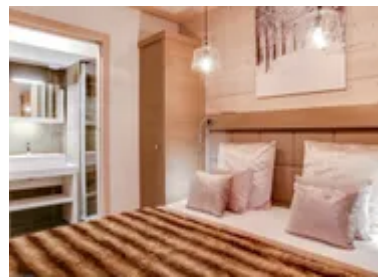
- Master bedroom: Double bed with an ensuite bathroom with bath
- Bedroom 2: Double bed with an ensuite bathroom with shower
- Bedroom 3: Double bed with an ensuite bathroom with shower
- Bedroom 4: Double bed with an ensuite bathroom with shower
- Separate WC

Outdoor grounds:

- Balcony
- Three private underground parking spaces
- Private ski locker

Additional Facilities

- Access to wellness centre (sauna, steam, gym treatments)
- 3 private parking spaces
- WiFi
- TV
- Fondue Appliance
- Baby Cot and High Chair (available on request, subject to extra charge)



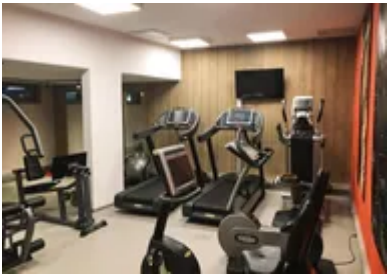
Location & Local Information

Apartment Cyclamen sits in Courchevel Village at 1550 metres above sea level, a calm and friendly base within the wider Three Valleys. The area blends traditional chalets with smart new residences and has everything you need for an easy ski holiday, including a ski school, equipment hire and several relaxed restaurants within a short walk. Access to the slopes is straightforward. The residence is close to the piste and only a short distance from the lifts, giving you quick links into the main Courchevel sector and the full expanse of the Three Valleys.

Courchevel is known for its reliable snow cover thanks to its north-facing slopes and its broad mix of terrain. Confident skiers will find technical routes near the top of Saulire, while intermediates have long, flowing pistes across the valley. Beginners are well served with dedicated learning areas and supportive ski schools offering group and private lessons. On the mountain, a good choice of cabin restaurants and bars gives you plenty of places to break for lunch or regroup during the day.

Local Amenities

Nearest Airport	Geneva (129 km)
Nearest Airport	Lyon (184 km)
Nearest Bar/Pub	Les Perles du Palais (110 m)
Nearest Piste	Tovets (20 m)
Nearest Restaurant	la Chapelle 1550 (140 m)
Nearest Ski Hire	Intersport - Courchevel Village (20 m)
Nearest Ski Lift	Roys (Button Lift, access to Grangettes) (20 m)



Nearest Ski Lift	Grangettes (100m)
Nearest Supermarket	Proxi Supermarché (150 m)
Nearest Town/City	Courchevel Village 1550
Nearest Village	Courchevel Village 1550 (50 m)

What we love

- Situated in the village centre, Apartment Cyclamen is just moments from the slopes whilst being perfectly placed to make the most of Courchevel's attractions and activities
- The cosy living room is ideal for relaxing after a long day on the slopes, whilst the balcony invites you to sit out in the fresh air and take in the stunning views
- Being right in Courchevel Village means shops, restaurants and ski services are only moments away.

What you should know...

- Whilst Courchevel is well-serviced by public transport, the apartment has three private parking space in the underground garage. As the parking is located underground, it may not be suitable for larger vehicles or those with roof boxes.
- Being on the 3rd floor, the building is serviced by an elevator, and there is a ski locker in the basement to store all of your kit
- Access to the residence's wellbeing area is included in the renta price, and there is a shuttle to Aquamotion sports centre nearby

Terms & Conditions

- **Security deposit:** Secure link sent to the client's email to fill in the details of the client's bank card online 2 weeks before the arrival for the amount of €4000. This is in the form of a card authorisation, funds are not cashed
- **Arrival time:** Check-in 5.00 PM.
- **Departure time:** Check-out 10.00 AM.
- **Energy costs included?:** Yes, included in the rental price.
- **Linen & towels included?:** Yes, included in the rental price.
- **Pets welcome?:** One pet is permitted on request only and with prior agreement with the owner. If accepted, a pet supplement of €100 will apply.
- **Other Ts and Cs:** Please note that rental of a cot and highchair is at an extra cost paid directly to the owner: Cot: 40€ per week Highchair: 30€ per week
- **Changeover day:** Saturday.
- **End of stay cleaning available?:** Yes end of stay cleaning and mid-stay clean are included. However, guests are required to leave the accommodation clean, tidy and in the same condition as on their arrival. Any extra cleaning, laundry, maintenance and/or garbage disposal required will be charged against the security deposit.
- **Smoking Allowed?:** Smoking & Vaping are not permitted.
- **Minimum stay:** 7 nights.
- **Heating costs included?:** Yes, included in the rental price.
- **Tax:** French Visitors Tax payable alongside balance (typically costs €1-€5 per adult per night- please enquire if exact amount is required).
- **Internet access?:** Wi-Fi internet access included.