

Apartment Hellebore

Region: 3 Valleys Sleeps: 6

Overview

Apartment Hellebore offers a smart and welcoming base for guests who want easy access to Courchevel Village and the slopes. Set across two generous levels and measuring 145 square metres, the apartment is designed for relaxed mountain living, combining warm alpine materials with a clean modern finish. The main floor brings everyone together with an open living and dining space that feels bright and comfortable, opening onto a balcony where you can enjoy the crisp mountain air after a day on the pistes. The fully equipped kitchen sits just beside the dining table, complete with a ceramic hob, Nespresso machine and a selection of useful appliances including fondue and raclette makers for cosy evenings in.

The lower level is home to the master bedroom, which has its own bathroom with a bathtub, offering a quiet retreat at the end of the day. The upper floor holds two further bedrooms, one with a double bed and the other with two single beds that can be joined on request, as well as an independent shower room and a separate WC. With thoughtful storage and a practical layout, the apartment works well for families or two couples sharing.

Guests have access to the residence's fitness room, along with a sauna and treatment rooms bookable for an additional charge. The underground parking space and private ski locker add to the overall convenience, and with the nearest ski lift only one hundred metres away and the slopes around twenty metres from the door, you can reach the wider Three Valleys network with minimal effort. Apartment Hellebore provides an easy, comfortable and well equipped setting for a week in the mountains, with everything close at hand for a straightforward ski holiday.



Facilities

Wi-Fi/Internet • Ski Lift Nearby • Ski School Nearby • Mountain View • Walk To Slopes • Lakes and Mountains • Washing Machine • Coffee Machine • Hairdryer • Ideal for Xmas/NY • Self-Catered • Skiing • Ski-In/Ski-Out • Walking/Hiking Paths • TV • Walk to Village • Gym/Fitness Room • Lift • Cots (Cribs) • Modern • Chalet Apartment • Ski Locker • Bathroom Toiletries • Ideal for Kids • Ideal for Teens • Pets on Request • Walk to Restaurant • Dishwasher • Microwave • Sauna/Steam • Heating • High Chair(s) • Parking Space • Outstanding Landscapes • Outdoor Pursuit & Activities • Tourist Towns & Villages

Interior & Grounds

The Apartment

Level 0

- Open kitchen
- Dining area
- Living room
- Master bedroom: Double bed with wardrobe and ensuite bathroom with bathtub
- Separate WC

Level 1

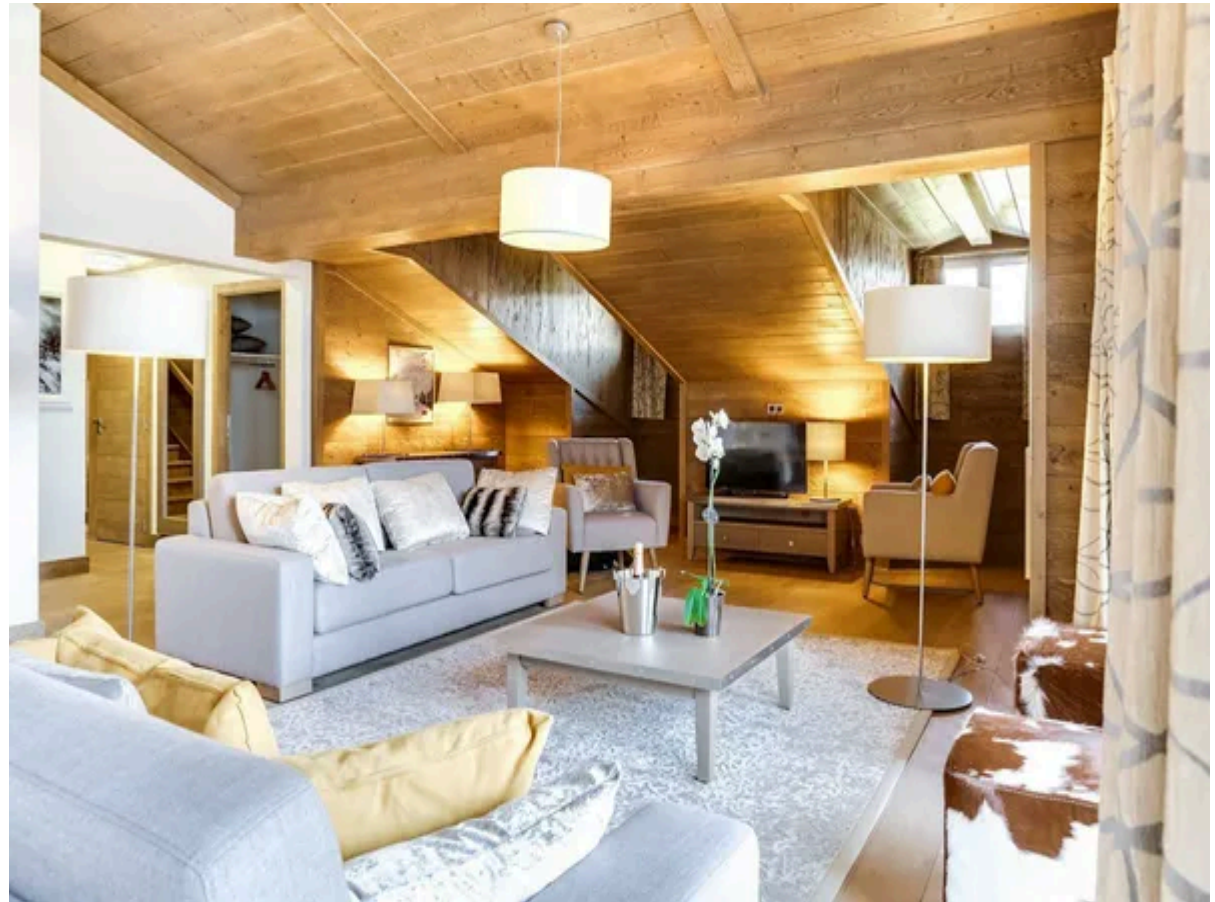
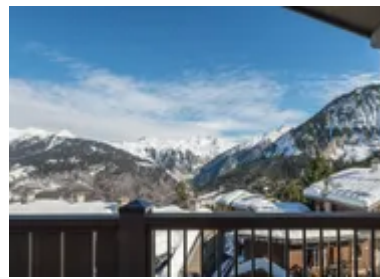
- Bedroom 2: Two single beds (can be prepared as a double on request) with shared access to independent shower room
- Bedroom 3: Double bed with shared access to independent shower room
- Independent bathroom with shower
- Separate WC

Outdoor grounds

- Balcony with table and chairs
- Private ski locker
- Private parking space in underground garage

Additional Features

- WiFi
- TV
- Wellness centre (with sauna, steam room and gym)
- High Chair and Cot (available upon request, subject to extra charge)
- Washing machine
- Iron and ironing board
- Vacuum
- Lift



Location & Local Information

Apartment Hellebore sits in a central position within Courchevel Village, giving you quick access to both the slopes and local amenities. The Grangettes chairlift, is only 100 metres away and links directly to the main Courchevel lift hub, making it easy to start your day without any unnecessary detours. The slopes are around twenty metres from the apartment, so you can be on the snow within moments of stepping outside. Shops, bakeries, ski hire and relaxed dining spots are all close by, allowing you to pick up supplies, arrange equipment or enjoy a simple lunch without relying on transport.

Courchevel Village offers a quieter atmosphere compared with the upper levels of the resort, but you still have a wide choice of pistes within easy reach. Confident skiers can head toward La Saulire for demanding terrain, while intermediates will find long blues leading back towards the village. Beginners have gentle areas within the Courchevel sector and can reach neighbouring resorts through the broader Three Valleys network. Off the slopes, the Aquamotion centre is a short journey away and provides pools, wellness facilities and family friendly activities. With everything close by, the apartment is well placed for guests seeking a straightforward and well connected base for the week.

Local Amenities

Nearest Airport	Geneva (129 km)
Nearest Airport	Lyon (184 km)
Nearest Bar/Pub	Les Perles du Palais (110 m)
Nearest Piste	Tovets (20 m)
Nearest Restaurant	La Chapelle 1550 (140 m)



Nearest Ski Hire	Intersport - Courchevel Village (20 m)
Nearest Ski Lift	Roys (Button Lift, access to Grangettes) (20 m)
Nearest Ski Lift	Grangettes (100 m)
Nearest Supermarket	Proxi Supermarché (150 m)
Nearest Village	Courchevel Village (0 m)

What we love

- Apartment Hellebore offers splendid views across the mountains, which you can enjoy from the balcony whilst sipping on a warm hot chocolate
- The ski locker and underground parking that makes for a stress free and organised stay at Apartment Hellebore
- Included in the rental price is access to a shared wellness facility, as well as the option to book into the sauna or one of the treatment rooms at an extra charge

What you should know...

- The building is serviced by an elevator, but there are ski lockers in the basement, perfect for storing wet kit
- The central location brings convenience but also some general village activity. Along with proximity to the lifts and slopes, piste bashers and ski lifts may be heard from the apartment in the morning and the evening
- Please note that the wellness facilities are shared with other guests in the apartment complex, and opening times can vary.
- While there is one parking space provided, it is located in the underground parking structure which may not be suitable for larger vehicles or those with roof boxes, please enquire for more details

Terms & Conditions

- **Security deposit:** Secure link sent to the client's email to fill in the details of the client's bank card online 2 weeks before the arrival for the amount of €4000. This is in the form of a card authorisation, funds are not cashed
- **Arrival time:** Check-in 5.00 PM.
- **Departure time:** Check-out 10.00 AM.
- **Energy costs included?:** Yes, included in the rental price.
- **Linen & towels included?:** Yes, included in the rental price.
- **Pets welcome?:** One pet is permitted on request only and with prior agreement with the owner. If accepted, a pet supplement of €100 will apply.
- **Other Ts and Cs:** Please note that rental of a cot and highchair is at an extra cost paid directly to the owner: Cot: 40€ per week Highchair: 30€ per week
- **Changeover day:** Saturday.
- **End of stay cleaning available?:** Yes end of stay cleaning (except kitchen) included as well as mid-stay clean. However, guests are required to leave the accommodation clean, tidy and in the same condition as on their arrival. Any extra cleaning, laundry, maintenance and/or garbage disposal required will be charged against the security deposit.
- **Smoking Allowed?:** Smoking & Vaping are not permitted.
- **Minimum stay:** 7 nights.
- **Heating costs included?:** Yes, included in the rental price.
- **Tax:** French Visitors Tax payable alongside balance (typically costs €1-€5 per adult per night- please enquire if exact amount is required).
- **Internet access?:** Wi-Fi internet access included.