

Apartment Petunia

Region: 3 Valleys Sleeps: 6

Overview

Set in the heart of Courchevel Village, Apartment Petunia offers a chic alpine retreat just moments from the ski lifts, with shops and restaurants within easy reach. This modern duplex combines the comfort of an independent stay with the service of a premium residence, creating the perfect base for a memorable mountain escape.

Sleeping six guests across two levels, the apartment is elegantly styled with soft tones, light oak floors and exposed stone that reflect its natural surroundings. On the lower floor, the open-plan living space is warm and welcoming, with large windows flooding the room with light. Sofas invite you to unwind by day, while the sleek kitchen makes it easy to gather over supper. Step onto the balcony to breathe in the crisp mountain air and watch the sun dip behind snow-covered rooftops.

A cosy cabin room with bunk beds and an en-suite sits downstairs, while upstairs, two inviting double bedrooms rest beneath sloping timber ceilings. The master features a bathtub, perfect for easing tired legs after a day on the slopes.

Guests can enjoy access to a residence fitness suite, sauna and wellness centre, with treatments available on request. A private underground parking space and ski locker ensure everything is close at hand.

Whether you're chasing fresh powder or settling in for slow alpine evenings, Apartment Petunia promises comfort, style and a prime village location for your next Courchevel stay.

Facilities

Ski Lift Nearby • Walk To Slopes • Wellness • Self-Catered • Skiing • Ski-In/Ski-Out • Walking/Hiking Paths • Ideal for Kids • Walk to Village • Ideal for Teens • Maid Service Available • Cots (Cribs) • Modern • Parking Space • Walk to Restaurant • Wi-Fi/Internet • Lakes and Mountains • Chalet Apartment • Washing Machine • Outstanding Landscapes • Coffee Machine • Outdoor Pursuit & Activities • Hairdryer • Tourist Towns & Villages • TV • Lift • Gym/Fitness Room • Dishwasher • Microwave • Heating • Transfers Available • Ski Locker • High Chair(s)



Interior & Grounds

The Apartment

Lower Level

- Dining area
- Open kitchen
- Living Room
- First bedroom w/bunk beds (2 guest) + ensuite w/shower
- Separate WC

Upper Level

- Second bedroom w/double bed (2 guests) + ensuite w/bath
- Third bedroom w/double or twin beds (2 guests)
- Independent bathroom w/shower

Additional Facilities

- WiFi
- Fitness suite
- Wellbeing Centre
- Ski Locker
- Underground Parking
- High Chair and Baby Cot (available on request)



Location & Local Information

Perfectly placed in the centre of Courchevel Village, Apartment Petunia is just a short stroll from restaurants and ski hire shops, with the Grangettes Gondola less than 50 metres away, linking you directly to the main lift network.

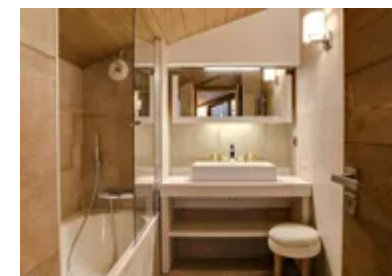
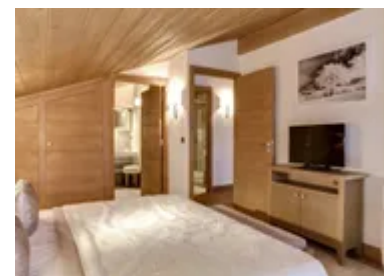
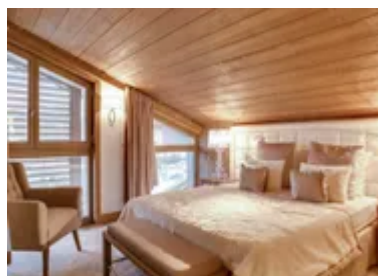
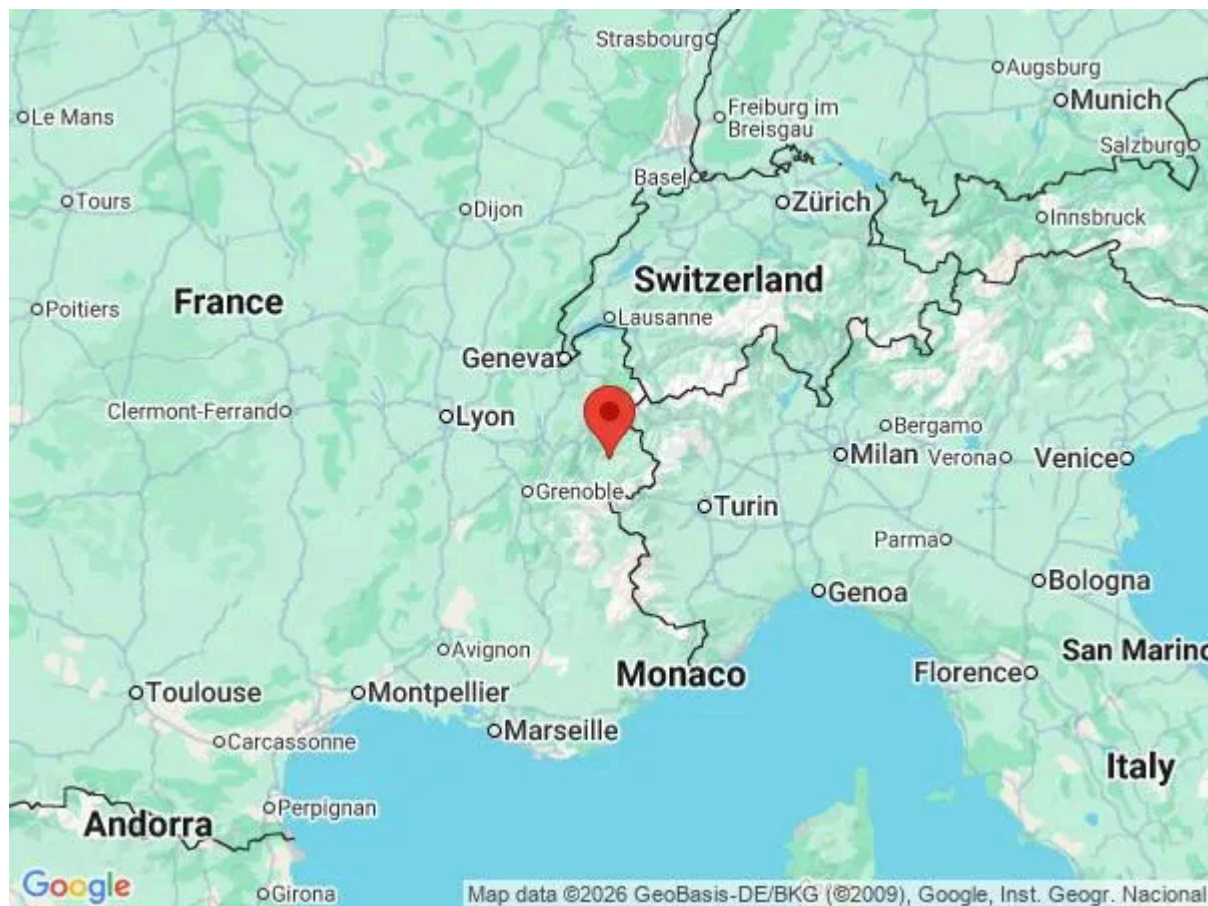
As part of Les Trois Vallées, Courchevel offers world-class skiing for all levels. Beginners will find gentle nursery slopes and dedicated 'ZEN' zones, while several ski schools offer group or private lessons. More experienced skiers can test their skills on red runs like Combe Saulire or tackle the famously steep Grand Couloir. For those seeking untouched terrain, hire a guide to explore the off-piste routes scattered across the valley.

The vibrant hub of La Croisette is a magnet for après-ski, with sunny terraces, lively bars and a mix of high-end and rustic dining options. From the panoramic views at La Cave des Creux to the hearty alpine fare at Le Bouc Blanc, there's something for every palate.

Beyond the slopes, non-skiers can explore scenic trails on foot or snowshoes, enjoy tobogganing in Moriond, or even take to the skies with a year-round paragliding flight. For a gentler pace, try a husky-led sledge ride through the snowy forest.

Local Amenities

Nearest Airport	Geneva Airport (137 km)
Nearest Bar/Pub	La Catérail (140 m)
Nearest Piste	Proveres (20 m)
Nearest Restaurant	Bar Pizzeria - La Corto (350 m)
Nearest Ski Hire	INTERSPORT - COURCHEVEL VILLAGE (0 m)



Nearest Ski Lift	Tovets (50 m)
Nearest Supermarket	Proxi Supermarket (160 m)
Nearest Town/City	Courchevel Village (1550) (0 m)

What we love

- Enjoying an elevated position, Apartment Petunia offers spectacular views over the snowy rooftops and out to the picturesque mountains beyond
- Located less than 50m from the Gragnette Gondola, the slopes are just moments away, perfect for those looking to ski from dawn til dusk
- Each room is thoughtfully furnished and features its own bathroom, ensuring all the guests have their own space and comfortable experience

What you should know...

- Whilst Courchevel is well-serviced by public transport, the apartment has one private parking space in the underground garage, great for those driving from the airport or further afield
- Being on the 3rd floor, the building is serviced by an elevator, and there is a ski locker in the basement to store all of your kit
- Please note a high chair and baby cot can be requested

Terms & Conditions

- **Security deposit:** Secure link sent to the client's email to fill in the details of the client's bank card online 2 weeks before the arrival for the amount of €1000. Funds won't be taken or blocked on the credit card in this case.
- **Arrival time:** Check-in 5.00 PM.
- **Departure time:** Check-out 10.00 AM.
- **Energy costs included?:** Yes, included in the rental price.
- **Linen & towels included?:** Yes, included in the rental price.
- **Pets welcome?:** Yes, on request only and with prior agreement with the owner at a cost of 100€.
- **Changeover day:** Saturday.
- **End of stay cleaning available?:** Yes end of stay cleaning included and a mid-stay clean. However, guests are required to leave the accommodation clean, tidy and in the same condition as on their arrival. Any extra cleaning, laundry, maintenance and/or garbage disposal required will be charged against the security deposit.
- **Smoking Allowed?:** Smoking & Vaping are not permitted.
- **Minimum stay:** 7 nights.
- **Heating costs included?:** Yes, included in the rental price.
- **Tax:** French Visitors Tax payable alongside balance (typically costs €1-€5 per adult per night- please enquire if exact amount is required).
- **Internet access?:** Wi-Fi internet access included.