

Petite Savane

Region: Provence-Alpes Sleeps: 4

Overview

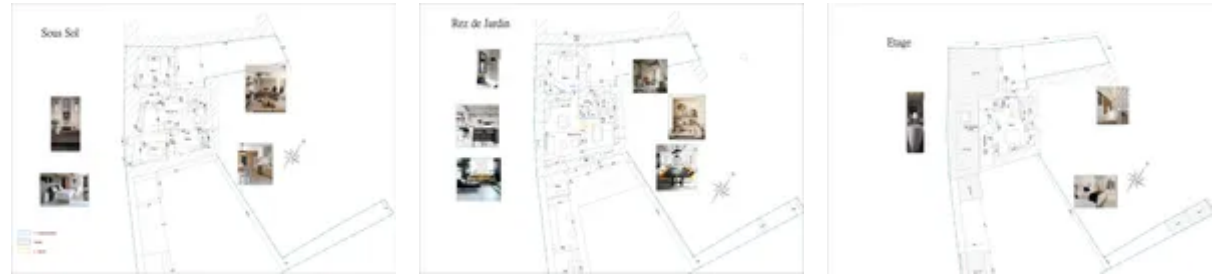
Petite Savane is a charming little bolthole in the heart of a gorgeous Provençal village. With its own rose-clad patio, al-fresco dining table and mini-pool alongside stylish and characterful interiors, it's the perfect base for admiring nearby L'Isle-sur-la-Sorgue, Fontaine-de-Vaucluse and the captivating landscapes of the Luberon.

This boutique-style abode has been exquisitely renovated in very recent years. It is part of a larger building that was once a silkworm factory upstairs and then a haybarn and 18th century wine cellar. Nowadays, this part of the house (on the lower level) sleeps up to 4 guests across two pretty bedrooms.

The inside has been cleverly designed to make the most of the intimate space with an open-plan lounge with air-conditioning, Smart TV and a well-equipped side kitchen, leading through to two individual bedrooms, each one with its own contemporary shower. The first double has exposed stone walls and a wealth of character with doors opening out to the patio whilst the other bedroom is so pretty with its simple yet chic furnishings and fittings.

Step out of your patio and you are in the heart of this old Provençal village. A highly recommended auberge is less than 100m away, whilst a couple of other restaurants, a bakery, butchers, bar-tabac and grocery store are also within a short stroll. A wider variety of shops can be found in nearby Coustellet as well as a weekly Farmer's market and the Lavender Museum.

Antique lovers will adore L'Isle-sur-la-Sorgue, just 6km away, a picturesque riverside town with waterwheels and lovely restaurants, and it's famous Sunday morning brocante is not to be missed. Meanwhile, nearby Fontaine-de-Vaucluse is a paradise for hikers and



canoeing/kayaking enthusiasts, both wonderful ways to appreciate the incredible natural beauty of this region.

Indeed, this is a fantastic location for exploring Provence with Avignon only 33km to the west and Aix-en-Provence just over an hour away heading south-east. Venture to the perched villages of the Luberon (Gordes and Ménerbes, for example) for atmospheric markets, enticing restaurants and idyllic vistas and soak up the Saturday morning ambience in historic Apt on market day. Both the Luberon and Les Alpilles offer a wealth of opportunities for walking, cycling, wine or olive oil tasting and yet more glorious experiences and adventures in Provence.

Facilities

Wi-Fi/Internet • Golf Nearby • Air-Con • Fishing • Wine Tasting • Coffee Machine • Cycling • Tennis Nearby • Historical Sites • Canoeing/Kayaking • Horse Riding • Walking/Hiking Paths • Walk to Village • Great Value • Maid Service Available • Private Pool • Ideal for Teens • Walk to Restaurant • <1hr to Airport • All Bedrooms En-Suite • Smart TV • Heating • Parking Space • Outstanding Landscapes • Outdoor Pursuit & Activities • Tourist Towns & Villages

Interior & Grounds

Petite Savane Interiors

- Small lounge with air-conditioning, sofa and side kitchen, well-equipped including oven, dishwasher, microwave, fridge and toaster
- Bedroom with queen-size double bed (160x200cm) and shower in the bedroom
- Bedroom with double bed (140x200cm) and shower in the bedroom
- Separate WC

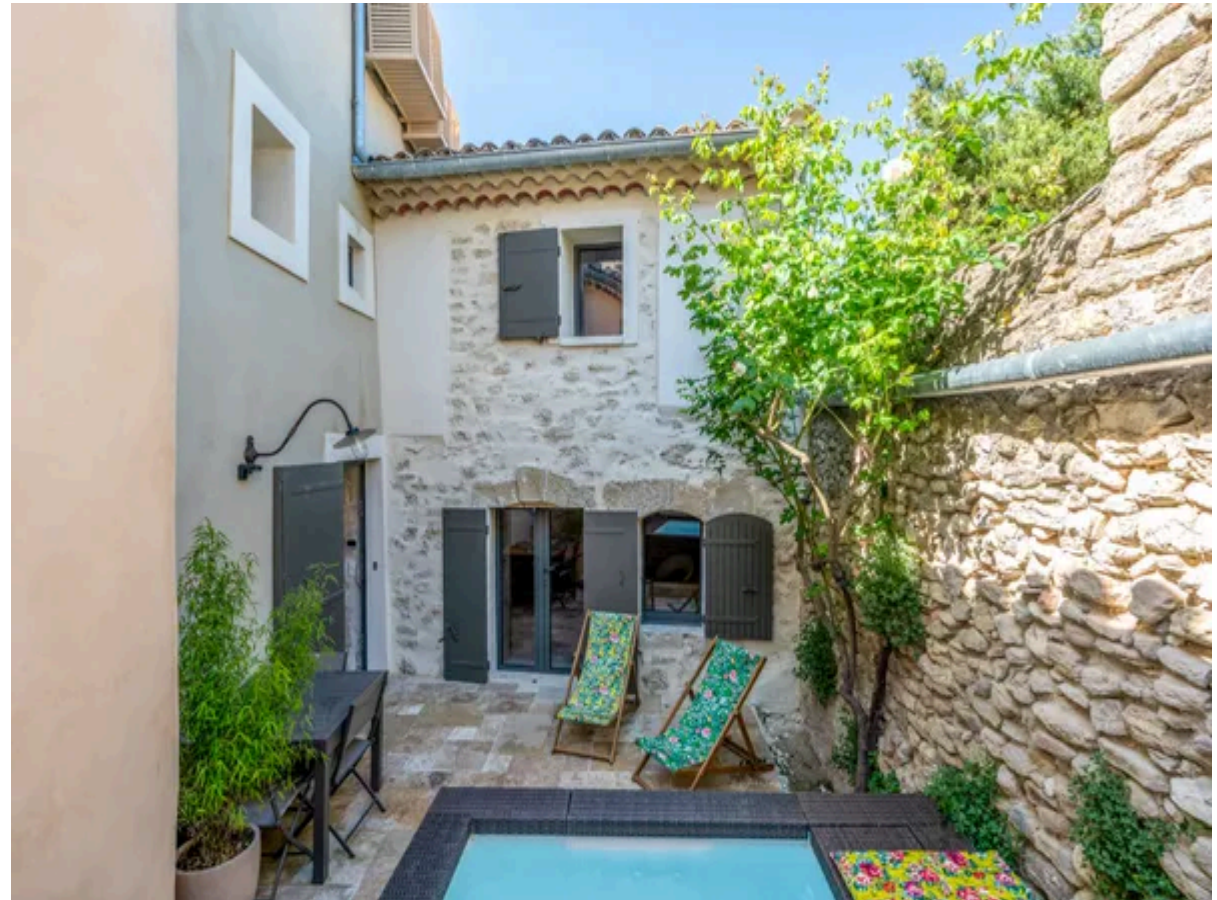
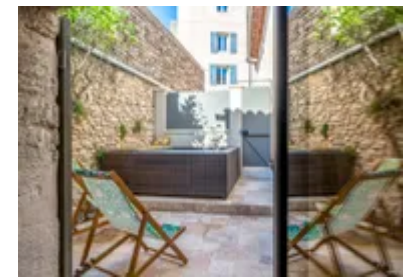
Outside Grounds

- Small patio with 'mini-pool' (1.4x1.8m, max depth: 0.55m)
- Table and chairs for al-fresco dining
- Deck chairs

Facilities

- Wi-Fi
- Air-conditioning (lounge only)
- Smart TV
- Washing machine

For larger groups it is also possible to rent 3-bedroom Grange des Prairies (<https://www.oliverstravels.com/france/provence-alpes/avignon/grange-des-prairies/>) which is part of the same building (the two levels above with its own private entrance). They can be connected via a pretty staircase.



Location & Local Information

In the heart of a traditional Vaucluse village in Provence, 33km from historic Avignon, Petite Savane enjoys a wonderful location for exploring nearby L'Isle-sur-la-Sorgue and Fontaine-de-Vaucluse as well as the beautiful landscapes of the Luberon and beyond.

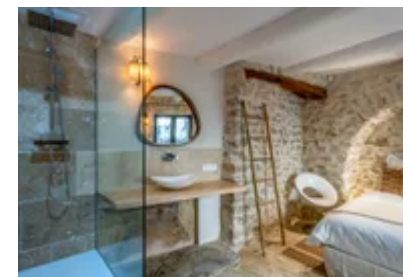
Just step through the patio's entrance gate, past the car parking space (it's narrow, for a small car only) and stroll down the road to a couple of restaurants (including a highly regarded auberge within 100m), a café-tabac and village épicerie.

L'Isle-sur-la-Sorgue (6km) is a must-visit during your time here, known as the "little Venice of Provence". Sit on a riverside terrace for lunch overlooking one of the town's waterwheels before pottering around little antique shops. The Sunday morning brocante is one of the most popular in southern France.

In the other direction, as you approach the Luberon, is Coustellet (5.5km), a handy village to visit thanks to its range of attractive food shops, supermarket, Lavender Museum and weekly Farmer's market. Just outside the village, near Oppède, is an excellent winery and the Musée de l'Huile d'Olive. The idyllic perched village of Oppède le Vieux (11km) is also worthy of your time!

Elsewhere in the Luberon, come across cherry orchards, lavender fields, vineyards and incredible landscapes of woodland, farms and idyllic hilltop villages, including Gordes (12km), Ménerbes (13km) and Roussillon (21km), three of France's '*Plus Beaux Villages*'. Gastronomes should head to the Saturday morning market in historic Apt (29km) or simply enjoy leisurely lunches on restaurant terraces with views of the glorious Luberon scenery. The region is a paradise for cyclists, keen walkers and even rock-climbers.

Fontaine-de-Vaucluse (6km) is also known for its outstanding natural beauty and hiking trails alongside canoeing and kayaking down the Sorgue River. Meanwhile,



golf-lovers note that Golf de Saumane's 18 holes are just a short drive away.

For further exploring across Provence, spend the day admiring the UNESCO World Heritage sites of Avignon (33km), follow Van Gogh's footsteps in artistic Saint-Rémy-de-Provence (34km) or spend time in some of Les Alpilles' gorgeous villages such as Les Baux-de-Provence, Eygalières and Maussane-les-Alpilles – bring back some of France's finest extra virgin olive oil!

Local Amenities

Nearest Airport	Marseille Airport (64km)
Nearest Airport 2	Nîmes Airport (72km)
Nearest Train Station	L'Isle-sur-Sorgue/Avignon TGV (7km/31km)
Nearest Village	In the heart of a village (0km)
Nearest Restaurant	In the village (100m)
Nearest Shop	Épicerie (Within 600m)
Nearest Supermarket	Super U et Drive (6km)
Nearest Town	L'Isle-sur-la-Sorgue (6km)
Nearest City	Avignon (33km)
Nearest Golf	Golf de Saumane (5km)

What we love

- A charming little bolthole in the heart of a traditional Provençal village
- There's a pretty patio for relaxing outside with it's own 'mini-pool' for cooling down on warm summer days
- You can stroll to three village restaurants including a highly regarded French *auberge* with a picturesque terrace
- How wonderful to be so close to L'Isle-sur-la-Sorgue's Sunday morning antique market as well as Fontaine-de-Vaucluse's outstanding natural beauty
- Visit some of France's most beautiful villages in the Luberon such as hilltop Gordes and Ménerbes

What you should know...

- The courtyard is home to a 'mini-pool' (1.4x1.8m, max depth: 0.55m) - it has no safety feature due to its size.
- Air-conditioning is in the lounge only.
- Each of the bedrooms has its own en suite showers open-plan to the bedrooms.
- There is a narrow car parking spot just off the road near the entrance (suitable for a small car only) or there are car parks in the village you may prefer to use.
- 3-bedroom *Grange des Prairies* (<https://www.oliverstravels.com/france/provence-alpes/avignon/grange-des-prairies/>) is part of the same building and is rented out separately (Petite Savane is on the lower floor but they each have their own entrance). They can also be rented together to sleep up to 10 guests (subject to availability) – pretty stairs connect the two parts of the house.

Terms & Conditions

- **Security deposit:** €700 charged to client's credit card by OT as a pre-authorisation at least 2 weeks prior to arrival and refunded two weeks after departure, subject to full inspection.
- **Arrival time:** 5.20 p.m. - 7.00 p.m.
- **Departure time:** 10.00 a.m.
- **Energy costs included?:** Yes.
- **Linen & towels included?:** Yes.
- **Pets welcome?:** No.
- **Other Ts and Cs:** The courtyard is home to a 'mini-pool' (1.4m x 1.8m, max depth: 0.55m) so best suited for cooling off. It has no safety feature due to its small size. Please note that mini-pool is closed from November to May, however, opening dates are subject to local weather conditions and pool maintenance requirements. Air-conditioning is in the lounge only. Weddings, stag/hen parties and any special events are not allowed.
- **Changeover day:** Saturday in high season. Flexible during all other periods.
- **End of stay cleaning available?:** No, extra €125, payable to Oliver's Travels at the time of balance payment. This is for a standard changeover clean. Guests are required to leave the accommodation clean, tidy and in the same condition as on their arrival. Any extra cleaning, laundry, maintenance and/or rubbish disposal required will be charged against the security deposit.
- **Smoking Allowed?:** No.
- **Minimum stay:** 7 nights in high season. 4 nights during all other periods.
- **Heating costs included?:** Yes.
- **Tax:** French Visitors Tax payable to Oliver's Travels at the time of balance payment (typically costs €1-€10 per adult per night - please enquire if exact amount is required).
- **Pool towels included?:** Yes.