

# Apartment Lippi

Region: Florence    Sleeps: 6

---

## Overview

Apartment Lippi is a refined and generously proportioned residence nestled within a 19th-century palazzo in the heart of Florence. Combining classical elegance with contemporary comfort, this beautifully designed apartment offers a peaceful retreat with immediate access to the city's most iconic attractions. Located on the first floor and accessible by both stairs and lift, it provides the privacy of a fully equipped home while placing you steps away from Florence's rich culture, cuisine, and history.

The apartment opens into a luminous sitting and dining room, styled in warm terracotta tones and filled with light from three tall, south-facing shuttered windows overlooking quiet Via Mozza. A frescoed ceiling crowns the elegant space, where ghost chairs and banquette seating surround a table for eight. Adjacent is a semi-open kitchen with integrated appliances, perfect for relaxed, shared meals. Down the corridor, the principal bedroom features a canopied bed and a sleek separate bathroom with a marble rain shower and botanical accents. Two additional bedrooms, one with an en-suite bathroom in polished blue and another with twin beds and a charming marble bath, offer both comfort and style. Apartment Lippi is a serene and sophisticated base from which to enjoy the beauty and rhythm of Florence.

## Facilities

Air-Con • City Homes & Apartments • Historical Sites • Ideal for Kids • Special Offer • Has Discount • Ideal for Teens • <1hr to Airport • Walk to Restaurant • Wi-Fi/Internet • Easy By Train • Washing Machine • Coffee Machine • Outdoor Pursuit & Activities • Hairdryer • Tourist Towns & Villages • TV • Lift • Tumble Dryer • Dishwasher • Microwave • Satellite TV • Heating



# Interior & Grounds

## Interior

- Sitting/dining room
- Dining suite hosting eight guests
- Semi-open, well-equipped kitchen
- Internal corridor
- Master bedroom: Double bed, wardrobes
- Sleek bathroom with marble rain shower, washer and dryer
- Bedroom 2: Double bed, walk-in closet and en-suite with rain shower
- Bedroom 3: Twin beds, wardrobe and en-suite with bathtub and shower over

## **Additional Facilities**

- Wi-Fi
- Satellite TV
- Air-conditioning
- Heating
- Washing machine/dryer
- Dishwasher
- Hair dryer



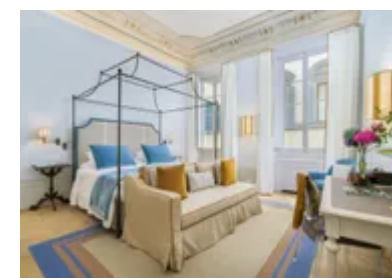
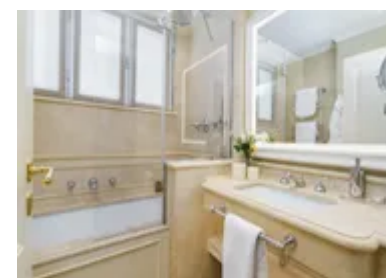
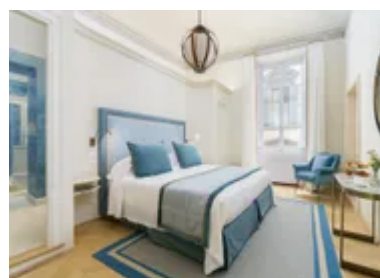
## Location & Local Information

This exquisite apartment, set within a beautifully restored 19th-century palazzo, offers a serene and sophisticated haven in the heart of Florence. Ideally positioned near the Uffizi Gallery, it provides the perfect balance of tranquillity and convenience, just moments from artisan boutiques, charming cafés, and excellent restaurants, yet tucked away from the city's busiest corners. The five-storey palazzo, home to a collection of elegant residences, has been meticulously reimaged over three years by a team of experts deeply attuned to its architectural legacy and cultural significance.

Florence itself is a living masterpiece, a city where Renaissance splendour, timeless beauty, and rich tradition converge. Stroll across the storied Ponte Vecchio, marvel at the grandeur of the Florence Cathedral and its iconic dome, or wander the halls of the Uffizi Gallery, where the works of Botticelli, Michelangelo, and Raphael await. Beyond its artistic treasures, Florence invites you to indulge in hearty Tuscan cuisine, browse handcrafted leather goods at San Lorenzo Market, and savour gelato under the Tuscan sun. This apartment offers an ideal base for exploring the city's many layers, inviting you to create unforgettable memories in one of the world's most enchanting destinations.

### Local Amenities

Nearest Airport	<b>Florence Airport</b> (13 km)
Nearest Bar/Pub	<b>Angie's Pub</b> (150 m)
Nearest Restaurant	<b>La Buchetta Food &amp; Wine Restaurant</b> (30 m)
Nearest Supermarket	<b>Conad City</b> (160 m)
Nearest Train Station	<b>Florence Santa Maria Novella</b> (2 km)





## What we love

- Apartment Lippi is nestled within a stunning 19th-century palazzo, offering a captivating ambience and a glimpse into Florence's rich history
- This apartment impresses with its spaciousness and stylish decor, creating a welcoming and comfortable atmosphere for families
- Located in the heart of Florence's charming centre, Apartment Lippi provides easy access to renowned attractions, restaurants, and shops, making it an ideal base for exploring the city

## What you should know...

- The en-suite houses a convenient washing machine and dryer for longer stays
- There are several apartments in the same building, which is helpful for larger groups that want to stay in the same place
- Pets are not allowed

# Terms & Conditions

- **Security deposit:** €800 charged to client's credit card before arrival and refunded two weeks after departure, subject to full inspection.
- **Arrival time:** 3 - 8 pm. Check-in outside this time may be subject to an extra cost. Please enquire for more details.
- **Departure time:** 11 am
- **Energy costs included?:** Yes, included in the rental price.
- **Linen & towels included?:** Yes, included in the rental price.
- **Pets welcome?:** Not allowed.
- **Changeover day:** Flexible.
- **End of stay cleaning:** Extra €210, payable to Oliver's Travels with the balance payment. Guests are required to leave the accommodation clean, tidy and in the same condition as on their arrival. Any extra cleaning, laundry, maintenance and/or rubbish disposal required will be charged against the security deposit.
- **Smoking Allowed?:** Smoking & Vaping are not permitted.
- **Minimum stay:** 2 - 5 nights, depending on the season. All other durations on request.
- **Heating costs included?:** Yes, included in the rental price.
- **Tax:** There is a city tax due to be paid locally which is not included in the rental rate. The amount will be confirmed by your onsite representative when you arrive.
- **Internet access?:** Wi-Fi internet access included.