

Apartment La Grange

Region: Espace Killy Sleeps: 6

Overview

Apartment La Grange in Val d'Isère is a charming alpine haven, offering a delightful retreat for winter enthusiasts and nature lovers alike. Nestled amidst the picturesque landscapes of the French Alps, this cosy and well-appointed apartment provides an ideal base for an unforgettable ski vacation. With its convenient location near the slopes and easy access to the vibrant town centre, Apartment La Grange promises a seamless blend of comfort and adventure.

The apartment's interior is thoughtfully designed, showcasing a harmonious fusion of rustic charm and contemporary elegance. Warm wooden accents, plush furnishings, and tasteful decor create a welcoming ambience, inviting guests to unwind and relax after an exhilarating day on the slopes. With accommodation for up to six guests in three comfortable bedrooms, Apartment La Grange is perfect for families, small groups, or friends seeking an intimate mountain getaway.

The living area serves as a central gathering spot, boasting ample space for relaxation and entertainment. Guests can cosy up by the fireplace, watch their favourite shows on the flat-screen TV, or admire the stunning alpine views from the balcony. The fully equipped kitchen allows for preparing delicious meals, and the dining area provides a perfect setting for enjoying them together.

Apartment La Grange offers a homey and stylish interior and access to a range of amenities to enhance the stay. The residence features a shared spa and wellness area, complete with a sauna and hot tub, providing the ultimate relaxation after a day of skiing or hiking.

With its strategic location in Val d'Isère, Apartment La Grange ensures easy access to the vast Espace Killy ski area, known for its excellent slopes and varied terrain suitable for all skill levels. Ski enthusiasts can indulge in thrilling descents and take advantage of the numerous ski schools and equipment rental shops nearby.

Apartment La Grange is an alpine retreat, combining the tranquility of the mountains with the convenience of modern amenities, all in one of the world's most sought-after ski destinations.

Facilities

Ski Lift Nearby • Walk To Slopes • Walk to Village • Ski-In/Ski-Out • Ski Delivery Included • Self-Catered • Maid Service Available • Special Offer • Has Discount • Great Value • Modern • Parking Space • Lakes and Mountains • Chalet Apartment • Rural Location • Washing Machine • Coffee Machine • Tourist Towns & Villages • Lift • Tumble Dryer •



Interior & Grounds

The Apartment

Interiors

- 2nd floor apartment
- Two bedrooms with king size beds
- One bedroom with bunk beds (sgl on top, dbl on bottom)
- Two bathrooms
- Open-plan living and dining area
- Half-open kitchen
- Bar-stool seating

Outside Grounds

- Balcony
- Garage

Additional Facilities

- WiFi
- Bose speaker
- Ski locker
- Shoe warmers
- Games for children
- Fondue machine
- Raclette machine
- Laundry facilities



Location & Local Information

Nestled amidst the majestic French Alps, Apartment La Grange is ideally located in the renowned ski resort of Val d'Isère. Situated in La Daille, this charming alpine town offers an unforgettable mountain experience throughout the year. Known for its exceptional ski slopes, stunning landscapes, and vibrant village atmosphere, Val d'Isère attracts winter sports enthusiasts, nature lovers, and adventure seekers alike.

The strategic location of Apartment La Grange places guests within easy reach of the slopes, ensuring a convenient and seamless skiing experience. Just steps away from the accommodation, visitors can access the vast Espace Killy ski area, which boasts over 300 kilometres of pristine slopes catering to all levels of skiing and snowboarding expertise. The resort's high altitude guarantees excellent snow conditions from early December until late April, attracting skiers and snowboarders from around the world.

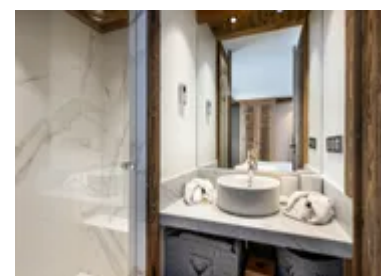
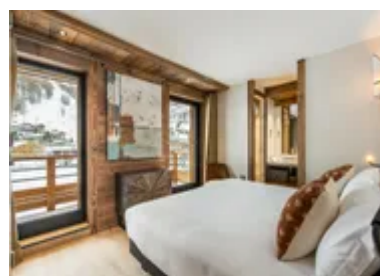
Beyond its exceptional skiing opportunities, Val d'Isère offers a multitude of activities and attractions for all ages and interests. During the winter months, guests can enjoy activities such as ice-skating, snowshoeing, sledding, and paragliding. For those seeking a more relaxed experience, there are charming cafes, restaurants, and shops to explore in the village centre.

In the summer, the stunning landscapes of Val d'Isère transform into a paradise for hikers and nature enthusiasts. The mountains come alive with colourful wildflowers, and the trails offer breathtaking views of the surrounding peaks and valleys. Visitors can partake in mountain biking, rock climbing, fishing, and white-water rafting, immersing themselves in the natural beauty of the Alps.

The location of Apartment La Grange also ensures easy access to the heart of Val d'Isère. The village exudes a traditional Savoyard charm with its quaint chalet-style architecture, cobble streets, and welcoming atmosphere. The bustling town centre offers a variety of restaurants, bars, and shops, where guests can indulge in local cuisine and pick up souvenirs.

Moreover, the nearby Aquasportif Center provides additional leisure opportunities with its swimming pools, fitness facilities, and wellness amenities, perfect for unwinding after a day of exploration.

Apartment La Grange in Val d'Isère offers an exceptional location, combining access to world-class ski slopes and a wealth of activities in both winter and summer, making it a haven for mountain enthusiasts and adventure-seekers alike.



Local Amenities

Nearest Airport	Geneva Airport (232 km)
Nearest Airport 2	Turin Airport (142 km)

Nearest Town/City	Val-d'Isère (9 km)
Nearest Restaurant	Restaurant d'Altitude Le Signal (300 m)
Nearest Bar/Pub	Chez Jules Le Coins Des Amis (9 km)
Nearest Piste	Pyramides (220 m)
Nearest Ski Lift	Point de vente (300 m)
Nearest Ski Hire	Skimium - VAL SKI SHOP (300 m)
Nearest Supermarket	SPAR Supermarché (200 m)

What we love

- We loved Apartment La Grange's convenient location, and ski-in and out access to the renowned Espace Killy ski area, offering an unforgettable skiing experience.
- The chalet's thoughtfully designed interior, a charming blend of rustic elements and contemporary comforts, created a warm and inviting atmosphere for our family and friends.
- The view from this apartment, more specifically the terrace, was truly unmatched and was the perfect background to my morning coffee.

What you should know...

- Please note that there is an elevator in the building, but the apartment does not have disabled access which may pose difficulties for those with limited mobility.
- Although there is a garage, there can be limited parking availability, especially during peak seasons, so it's advisable to plan ahead for parking arrangements.
- While the chalet offers internet access, guests should be aware that the mountain location may result in intermittent connectivity.

Terms & Conditions

- **Security deposit:** €500 charged to client's credit card by the owner 30 days before arrival and refunded two weeks after departure, subject to full inspection.
- **Arrival time:** 17:00 - 23:00
- **Departure time:** 10:00
- **Energy costs included?:** Yes, included in the rental price.
- **Linen & towels included?:** Yes, included in the rental price.
- **Pets welcome?:** On request only and with prior agreement with the owner.
- **Changeover day:** Saturday.
- **End of stay cleaning:** Not included, guests are required to leave the accommodation clean, tidy and in the same condition as on their arrival. Any extra cleaning, laundry, maintenance and/or rubbish disposal required will be charged against the security deposit.
- **Smoking Allowed?:** Smoking & Vaping are not permitted.
- **Minimum stay:** 7 nights.
- **Heating costs included?:** Yes, included in the rental price.
- **Tax:** French Tourist Tax is included in the rental rate.
- **Internet access?:** Wi-Fi internet access included.